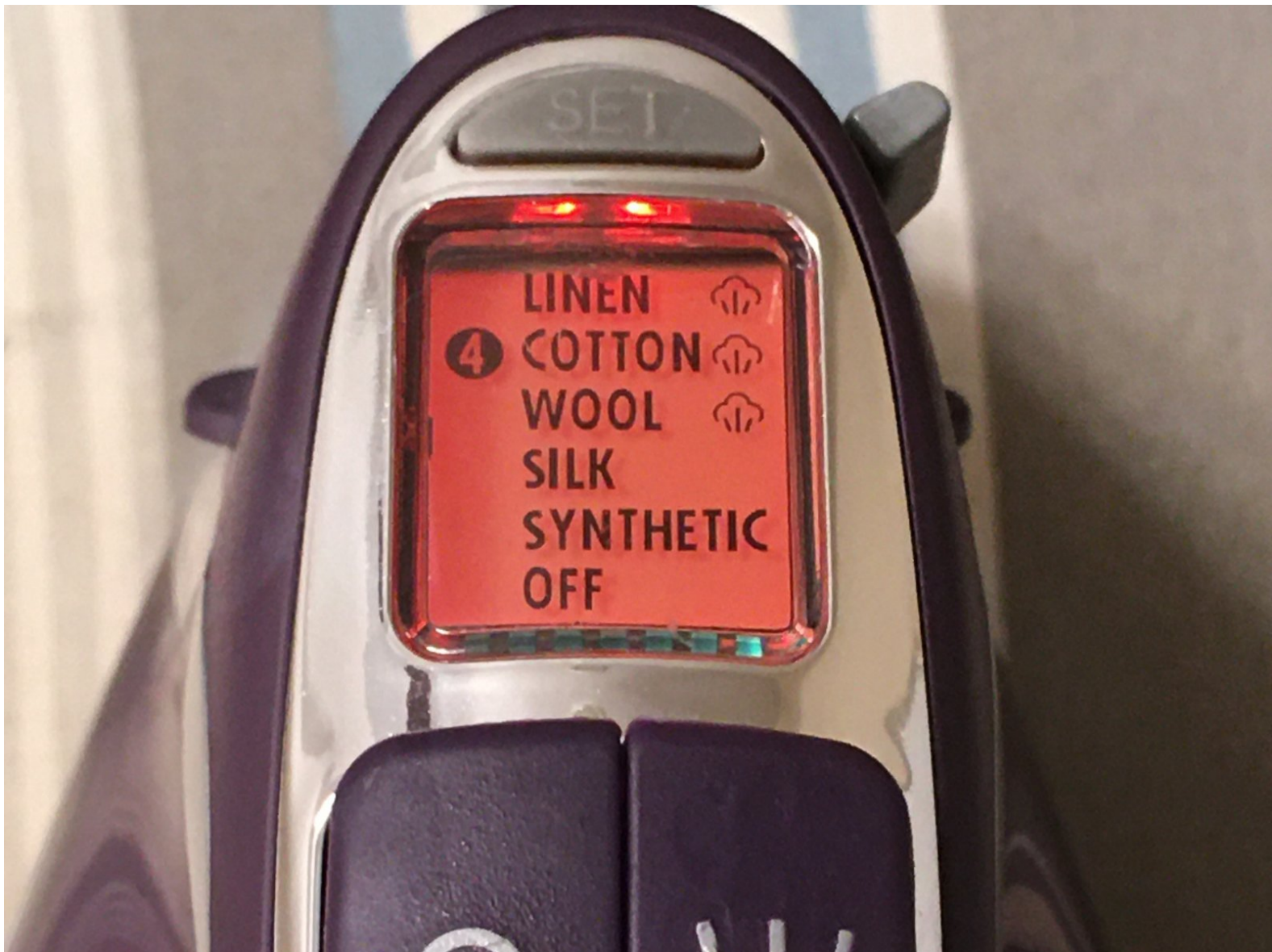




How to Iron a Patch onto a damaged Lightweight Jacket

Clothing can be easily damaged with tears and rips. This guide will explain one method of fixing these with a patch.

Written By: Zedric Banger II



INTRODUCTION

While sewing is usually the most widely method to fixing cloths, this is a more simpler way. If you already know how to sew, this guide most likely won't be necessary. Here is a more beginners friendly approach to fixing damages to clothing. Keep in mind that this guide shows how to repair small rips and tears: the same size as a patch. Anything bigger will require sewing.



TOOLS:

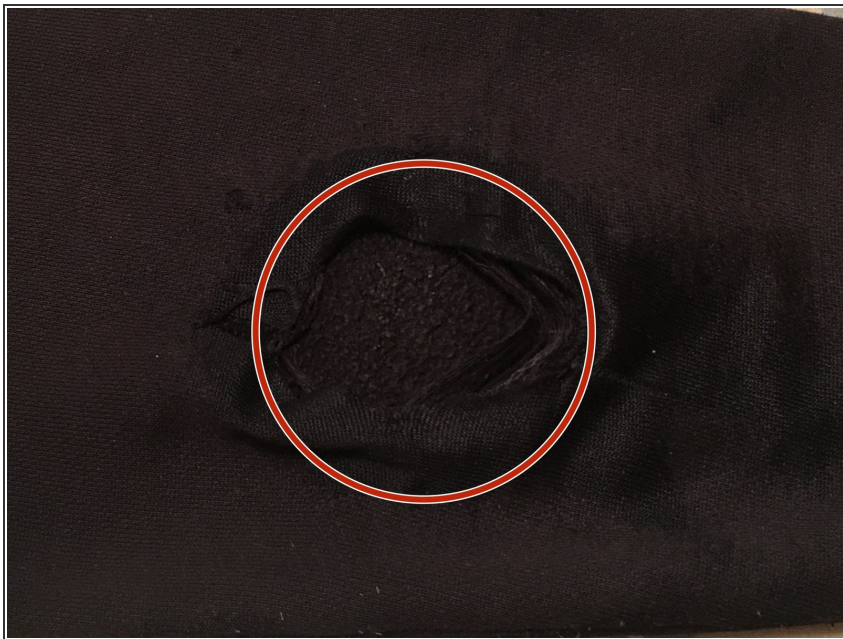
- [Iron On Patch](#) (1)
 - [Dish Towel](#) (1)
 - [Ironing Board](#) (1)
 - [Iron](#) (1)
-

Step 1 — How to Iron a Patch onto a damaged Lightweight Jacket



- Put your iron on the cotton setting and let it preheat while your getting your other items ready.

Step 2



- Place the jacket flat to where to damaged area is exposed.

Step 3



- Place the patch over the area.

Step 4



- Lay your towel over the patch covering the damaged area.

Step 5



- Take the heated iron and press it over the towel for 10 - 15 seconds.

Step 6



- Remove the towel and ensure that the patch is now embroidered onto the fabric.

To reassemble your device, follow these instructions in reverse order.