



# Nintendo Switch Pro Controller Buttons / D-Pad Replacement

The Nintendo Switch Pro controller's buttons...

Written By: James Seidlinger



# INTRODUCTION

The Nintendo Switch Pro controller's buttons and D-Pad are the main inputs of the controller. The buttons may need to be replaced if they are unresponsive, please check out our [troubleshooting guide](#) for more information.

During disassembly be careful of sharp edges, there are a few exposed pieces of plastic that could cut you.



## TOOLS:

[Tweezers](#) (1)

[iFixit Opening Picks \(Set of 6\)](#) (1)

[Phillips #00 Screwdriver](#) (1)

---

## Step 1 — Remove the screws



- Flip the controller over so the model stickers face the ceiling.
- Use a [JIS](#) #00 screwdriver to remove the two black 8.4 mm screws that secure the handles, located at the ends of the handles.

## Step 2 — Remove the handle covers



- Carefully remove the handle covers by pulling them away from the main body.

## Step 3 — Remove the screws



- Use a JIS #00 screwdriver to remove the four silver 6.8 mm screws that secure the clear back plastic cover.

## Step 4 — Unclip the plastic cover



- Carefully pry away the clear plastic cover using your fingernail.

## Step 5 — Remove the clear plastic cover



- Remove the clear plastic cover.

## Step 6 — Remove the battery



- Remove the lithium-ion battery by using a fingernail or plastic opening tool to pry it up on the left side.

 Only a small amount of force is needed.

## Step 7 — Remove the screws



- Use a Phillips #1 screwdriver to remove the five 5 mm screws from the back of the controller.
  - The two case screws above the handgrips and the single case screw below the battery bay have a shallow seat. These three screws can be easily removed.
  - The two case screws adjacent to the **ZR** and **ZL** shoulder buttons have a deep seat. Use an extension or a Phillips screwdriver with a longer shaft to reach these screws.



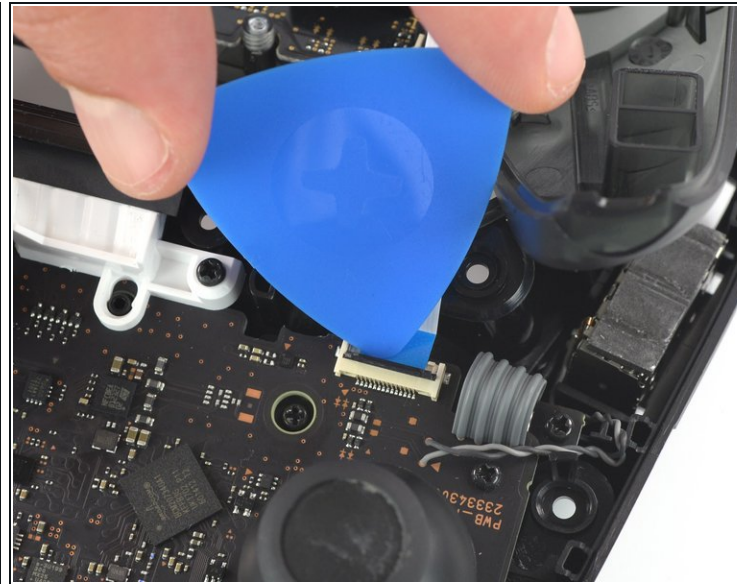
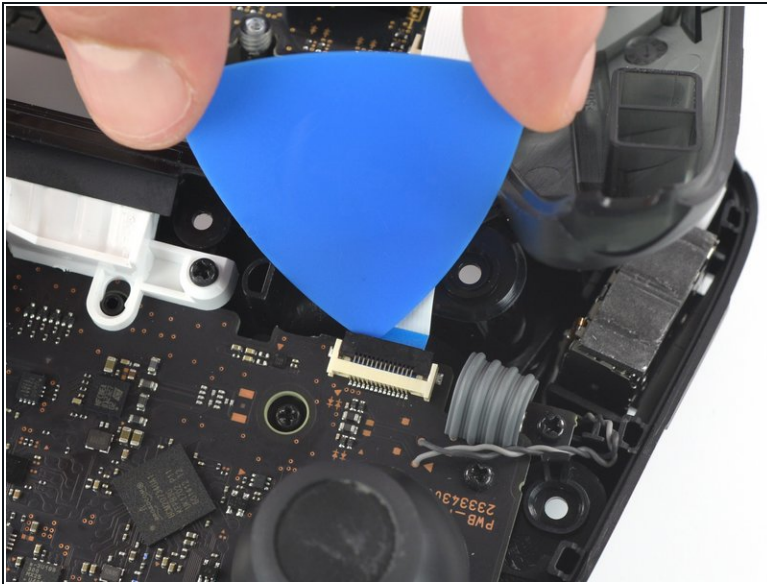
## Step 8



- Delicately take off the plastic cover from the controller.

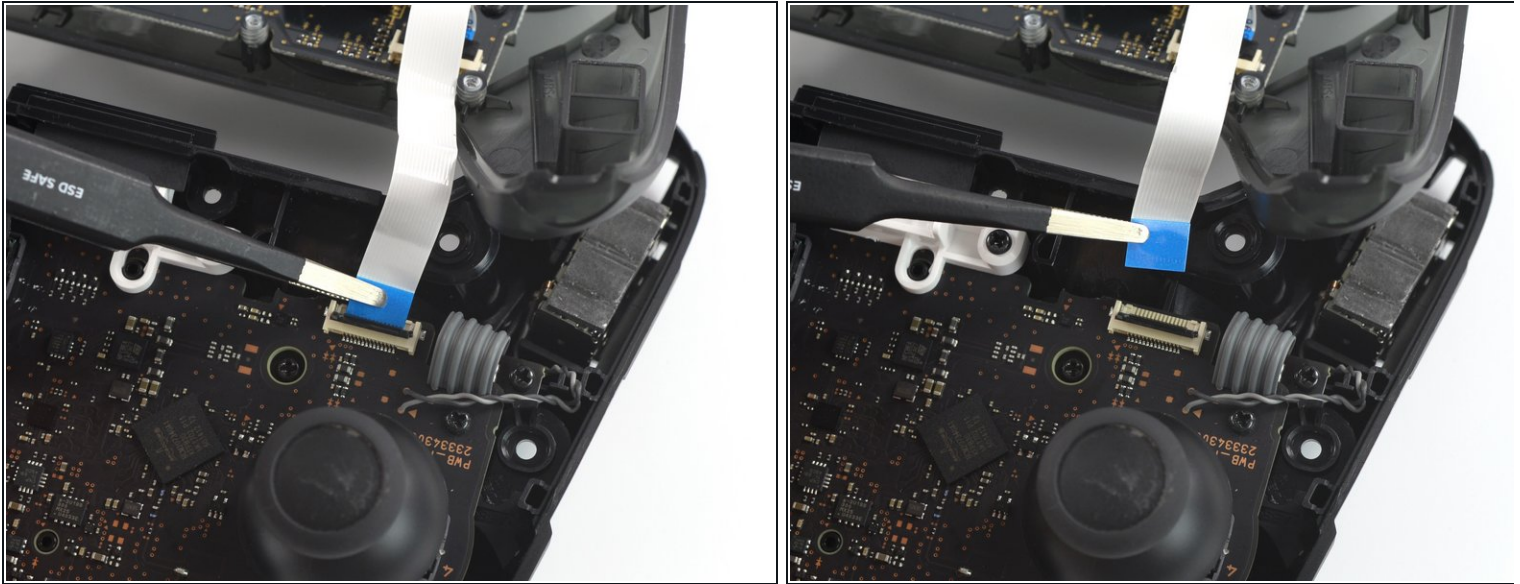
⚠ Do not completely remove the front cover just yet, as it is still attached to the motherboard via a white ribbon cable.

## Step 9 — Open the flap



- Use the tip of an opening pick to open the black flap of the ZIF connector by pushing it upwards.

## Step 10 — Disconnect the interconnect cable



- Use your fingers or a pair of blunt nose tweezers to disconnect the interconnect cable from its connector.

## Step 11 — Remove the front case



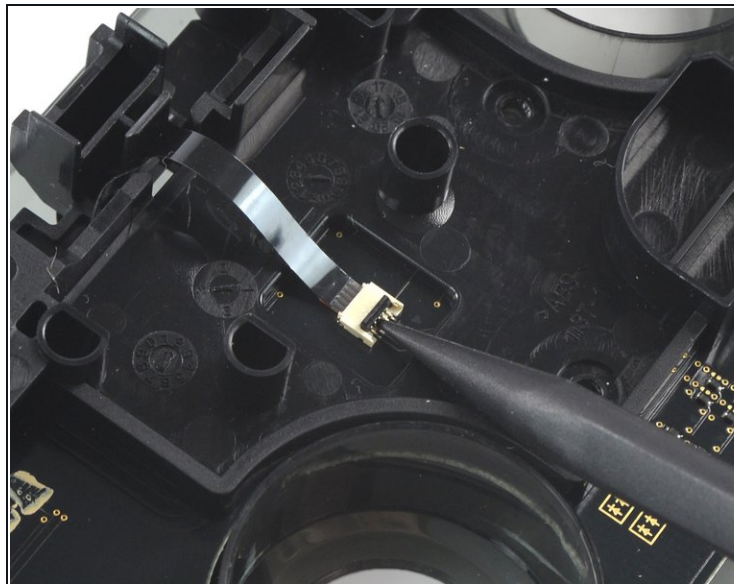
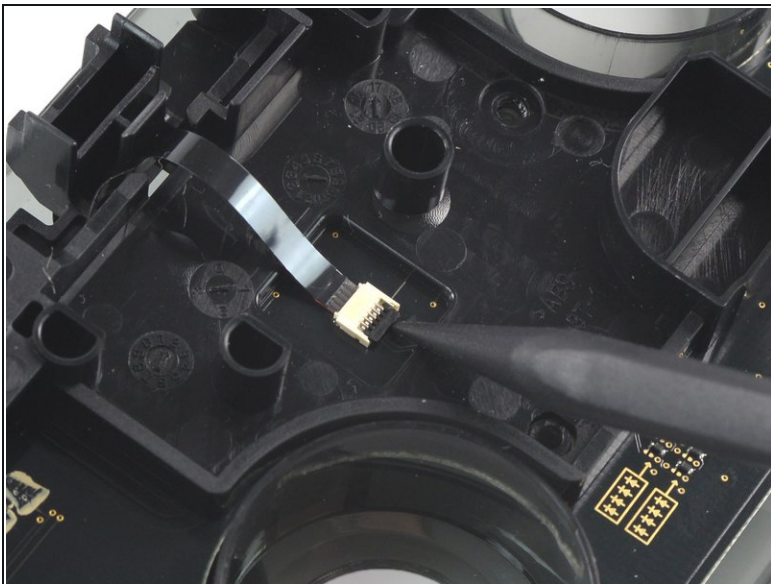
- Remove the front case.

## Step 12 — Remove the screws



- Remove the two 6.8 mm-long screws on the top circuit board using a Phillips screwdriver.

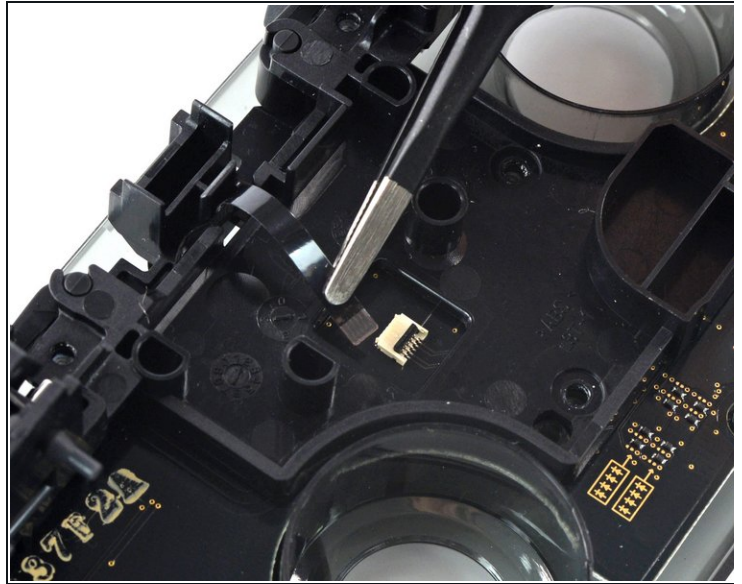
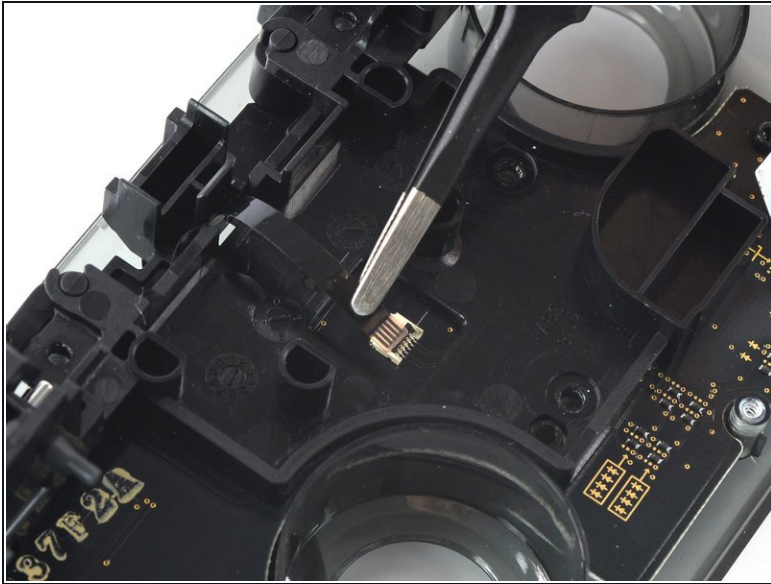
## Step 13 — Open the ZIF connector



- Use a spudger to flip up the locking tab on the ZIF connector.



## Step 14



- Remove the black ribbon cable from its connector.
- ⓘ Only a small amount of force should be needed to remove the ribbon cable.

## Step 15



- Remove the trigger buttons from the plastic cover.

## Step 16 — Unscrew the circuit board



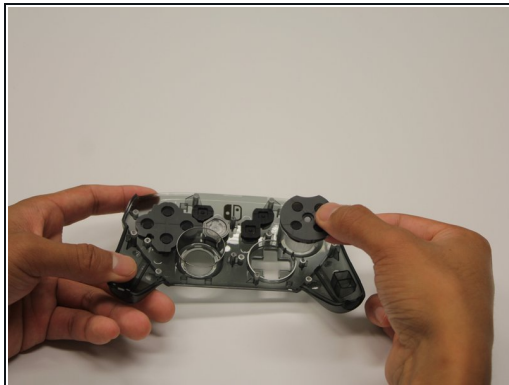
- Use a Phillips screwdriver to remove the two 5 mm-long screw securing the circuit board.

## Step 17 — Remove the board



- Remove the circuit board.

## Step 18 — Remove the button(s)



- Use your fingers or a pair of tweezers to remove the button(s) you wish to replace.

To reassemble your device, follow these instructions in reverse order.