



Nintendo Switch Pro Controller Joystick Caps Replacement

After using the Nintendo Switch Pro Controller...

Written By: Christian Rudnick



INTRODUCTION

After using the Nintendo Switch Pro Controller (Model HAC-001), it is common that the joystick cap becomes cracked or broken. Though the caps are not integral to the functionality of the controller, the caps provide comfort and ease of use of the joysticks. This guide helps with only the replacement of the joystick caps, not the joystick itself.

TOOLS:

[JIS Driver Set](#) (1)

[Tweezers](#) (1)

[iFixit Opening Picks \(Set of 6\)](#) (1)

[Phillips #00 Screwdriver](#) (1)

Step 1 — Remove the screws



- Flip the controller over so the model stickers face the ceiling.
- Use a [JIS](#) #00 screwdriver to remove the two black 8.4 mm screws that secure the handles, located at the ends of the handles.

Step 2 — Remove the handle covers



- Carefully remove the handle covers by pulling them away from the main body.

Step 3 — Remove the screws



- Use a JIS #00 screwdriver to remove the four silver 6.8 mm screws that secure the clear back plastic cover.

Step 4 — Unclip the plastic cover



- Carefully pry away the clear plastic cover using your fingernail.

Step 5 — Remove the clear plastic cover



- Remove the clear plastic cover.

Step 6 — Remove the battery



- Remove the lithium-ion battery by using a fingernail or plastic opening tool to pry it up on the left side.

 Only a small amount of force is needed.

Step 7 — Remove the screws



- Use a Phillips #1 screwdriver to remove the five 5 mm screws from the back of the controller.
 - The two case screws above the handgrips and the single case screw below the battery bay have a shallow seat. These three screws can be easily removed.
 - The two case screws adjacent to the **ZR** and **ZL** shoulder buttons have a deep seat. Use an extension or a Phillips screwdriver with a longer shaft to reach these screws.

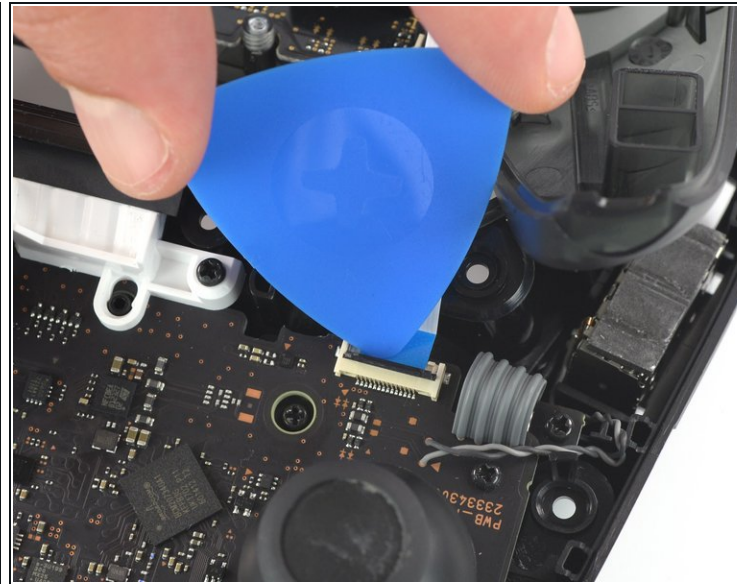
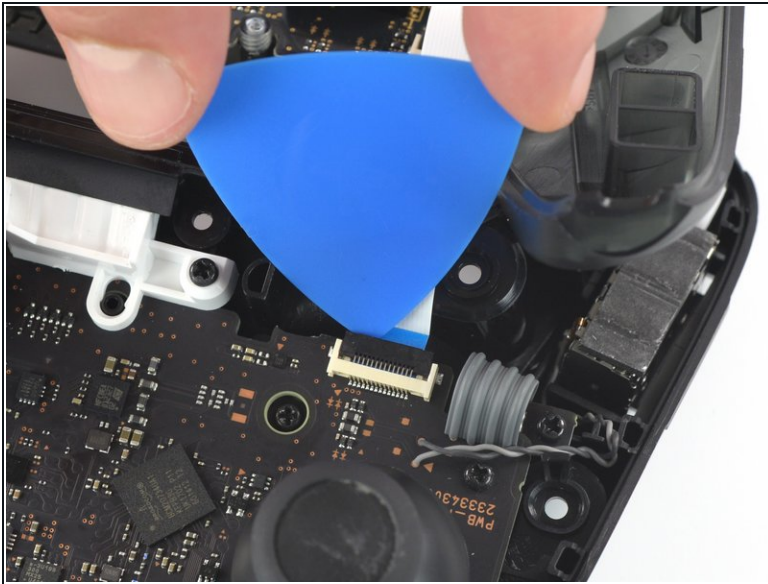
Step 8



- Delicately take off the plastic cover from the controller.

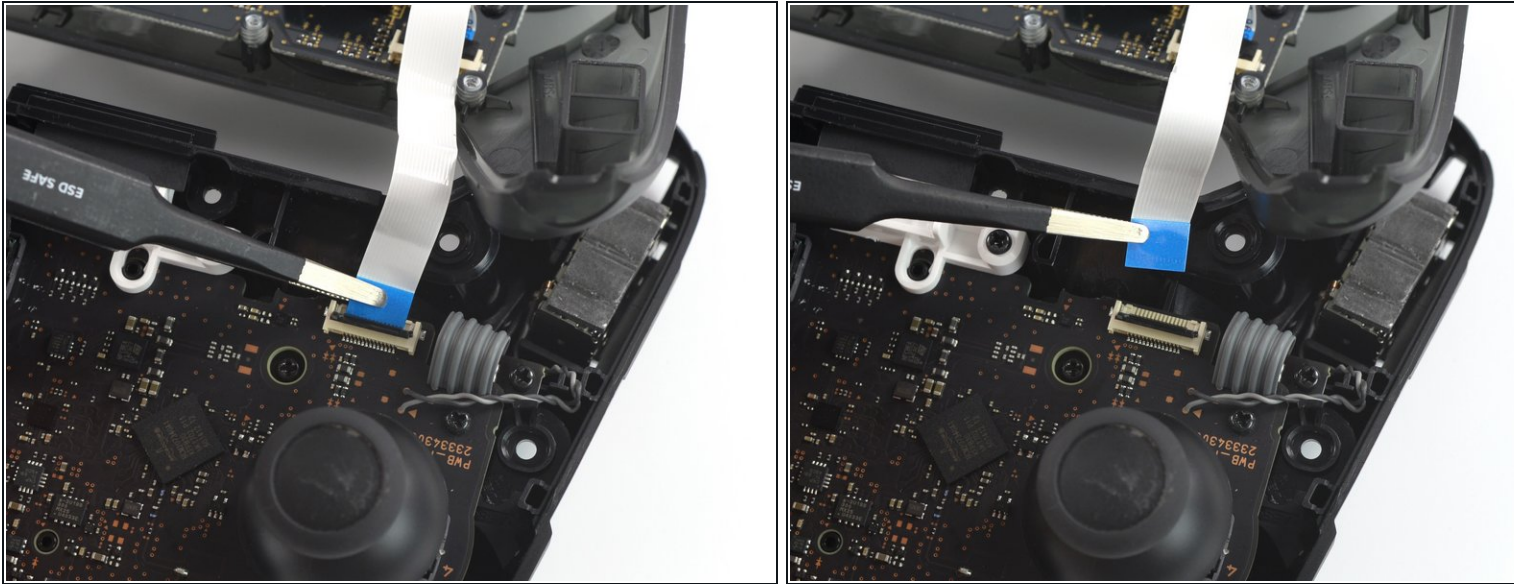
⚠ Do not completely remove the front cover just yet, as it is still attached to the motherboard via a white ribbon cable.

Step 9 — Open the flap



- Use the tip of an opening pick to open the black flap of the ZIF connector by pushing it upwards.

Step 10 — Disconnect the interconnect cable



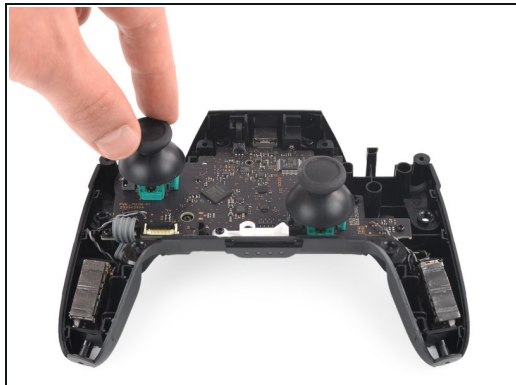
- Use your fingers or a pair of blunt nose tweezers to disconnect the interconnect cable from its connector.

Step 11 — Remove the front case



- Remove the front case.

Step 12 — Remove the joystick caps



- With light force pull the two joystick caps off of the controller.

To reassemble your device, follow these instructions in reverse order.