



PowerA Enhanced Wireless Controller Motherboard Replacement

This guide will show you how to access and...

Written By: Alberto Del Calvo Lopez



INTRODUCTION

This guide will show you how to access and replace the motherboard of your PowerA Enhanced Wireless Controller for Nintendo Switch. Replacing the motherboard is a necessary step for fixing stick drift and power-related issues on your controller. Other motherboard issues are often characterized by unresponsive buttons and your controller failing to immediately turn on.

Before beginning the repair process, it's important to remove the batteries from your controller to ensure your safety during the repair and prevent any additional issues. Step 1 of this guide will show you how to access the battery compartment to remove the batteries.

TOOLS:

[iFixit Opening Tool](#) (1)

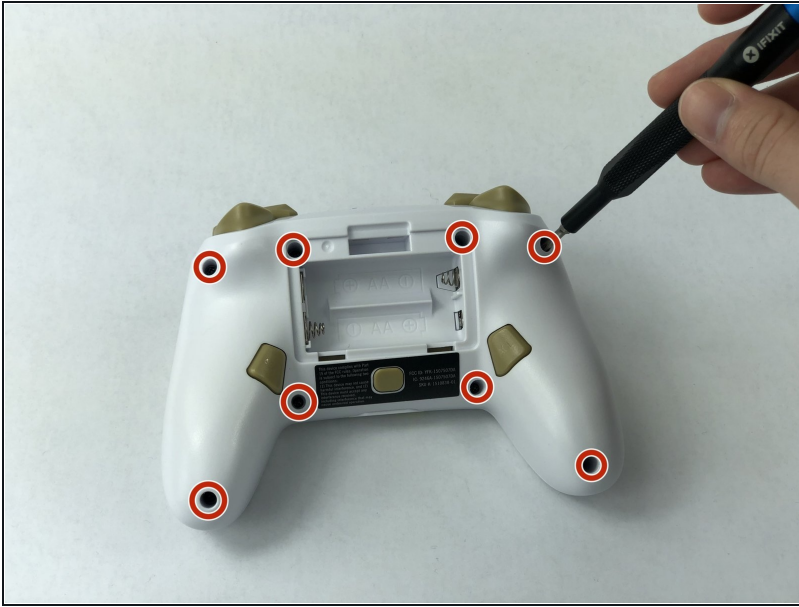
[JIS Driver Set](#) (1)

Step 1 — Motherboard



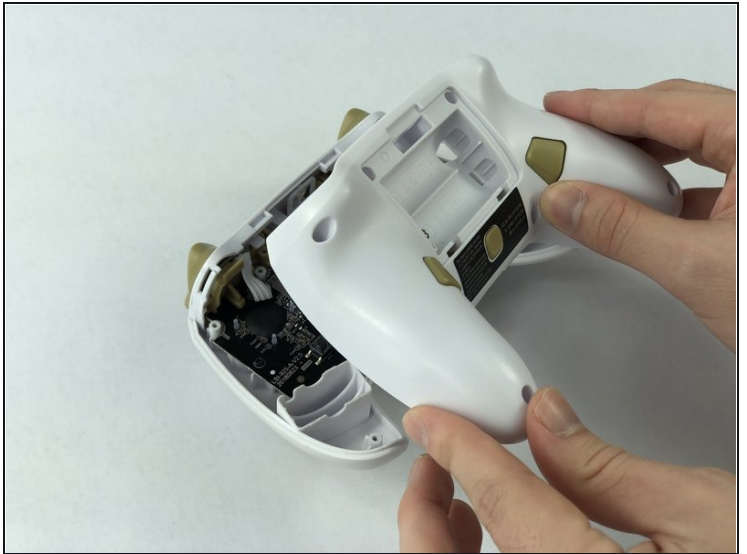
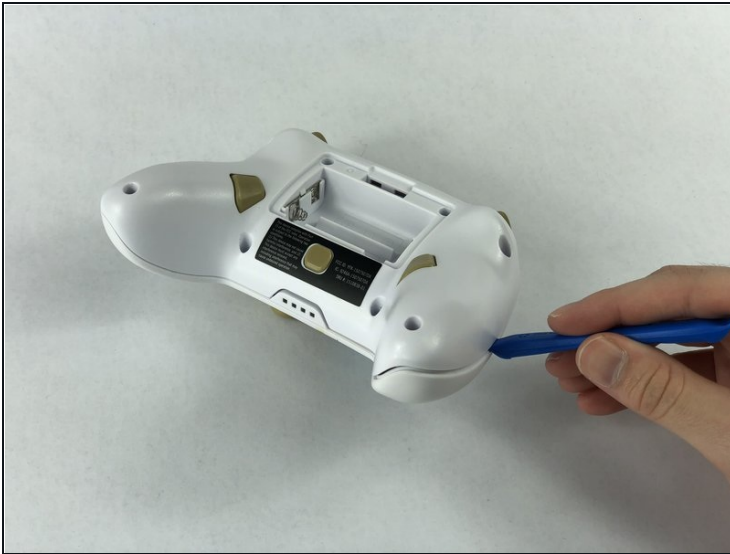
- Remove the battery cover by pressing down on the lever located on the top of the cover.
- Apply pressure until it clicks out of place, and pull it off.

Step 2



- Remove all eight screws using the J0 screwdriver.

Step 3



- Insert the iFixit opening tool into the seam and gently pry the cover plate up.
- Remove the cover plate once it is loosened.

Step 4



- Remove all three screws securing the motherboard using the J00 screwdriver.
 - Remove the motherboard.
-

To reassemble your device, follow these instructions in reverse order.