



HTC Thunderbolt Rear Inner Frame Replacement

Remove the rear inner frame to gain access to...

Written By: Brandon Younger



INTRODUCTION

Remove the rear inner frame to gain access to the motherboard and the LCD

TOOLS:

Phillips #0 Screwdriver (1)

iFixit Opening Tool (1)

Tweezers (1)

Step 1 — Rear Panel



- Insert the plastic opening tool into the top of the Thunderbolt near the power button.
- Gently pry up on the rear panel around the edges until it is loose.

Step 2



- Lift and remove the rear panel.

Step 3 — Battery



- Using the plastic opening tool, lift up the battery from the bottom near the kickstand.
- Remove the battery from the inner frame.

Step 4 — MicroSD Card



- Use your finger to push the MicroSD card in towards the top of the phone, allowing it to be released from the casing.

Step 5



- Use [tweezers](#) to grab onto the MicroSD card and carefully remove it from the casing.

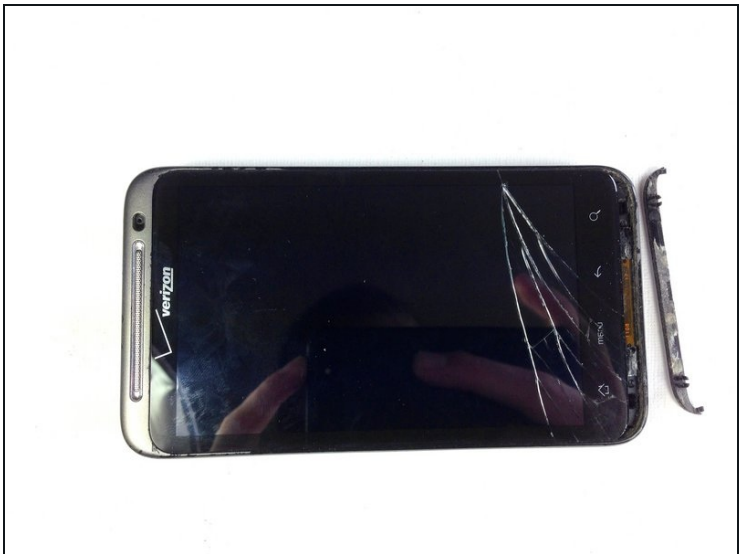
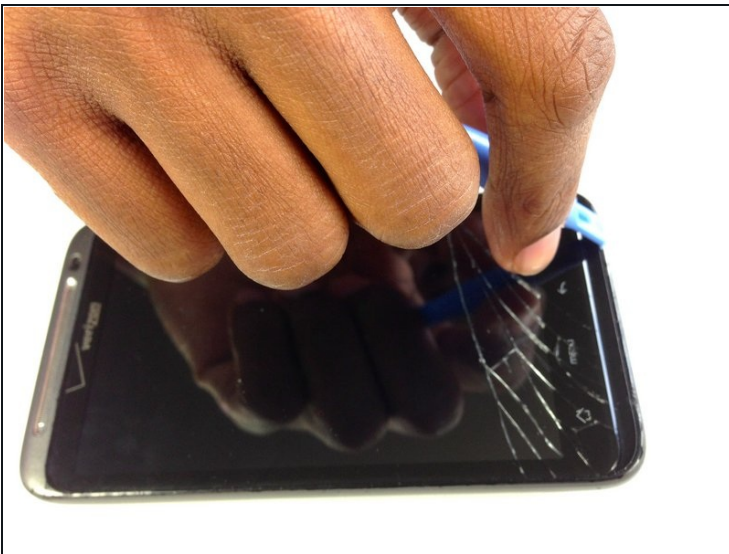
Step 6 — Rear Frame



- Remove the six Phillips screws from the perimeter of the rear frame.

⚠ By removing the screw with the "void" sticker on it, your Thunderbolt will no longer be covered under warranty.

Step 7



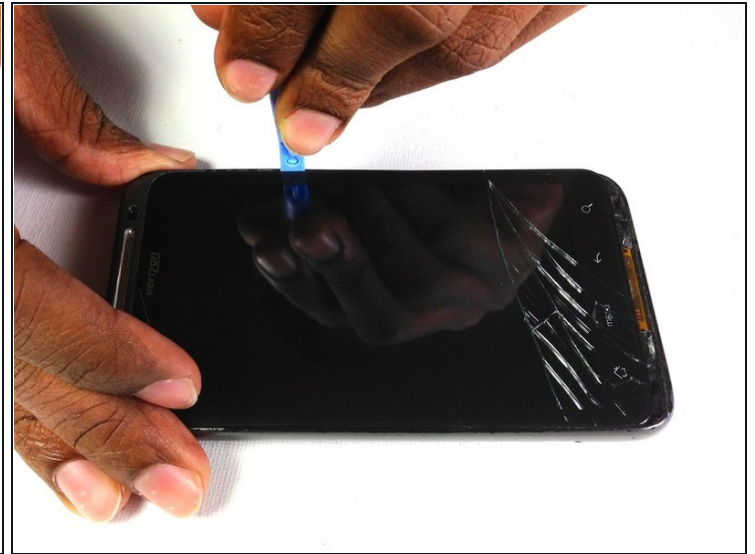
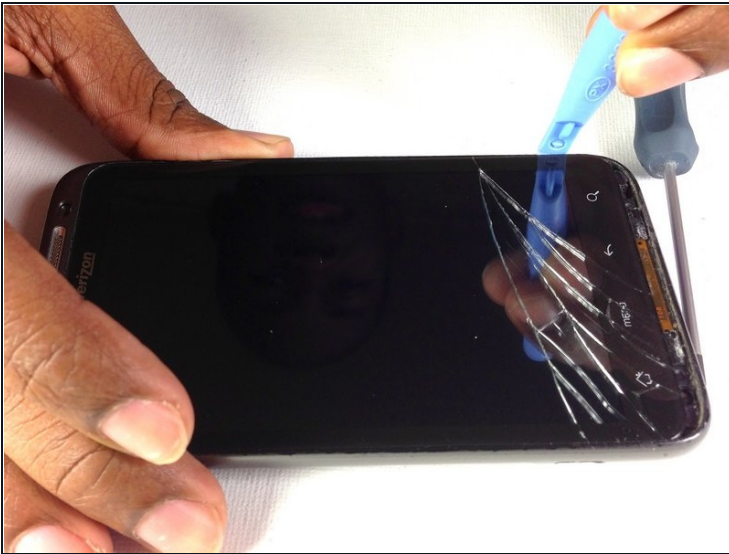
- Insert the plastic opening tool into the bottom of the phone underneath the soft keys.
 - Gently pry up on the plastic cover by sliding the plastic opening tool across the bottom of the phone.
 - Remove the plastic cover.
- ⓘ The plastic cover will have adhesive on it making it difficult to remove.

Step 8



- Remove the two Phillips screws where the plastic cover was.

Step 9



- Insert the plastic opening tool in between the screen and the frame on the side of the phone.
- Slowly slide the the plastic opening tool along the side of the phone until the screen begins to separate from the frame.
- Do the same for the opposite side of the phone.

Step 10



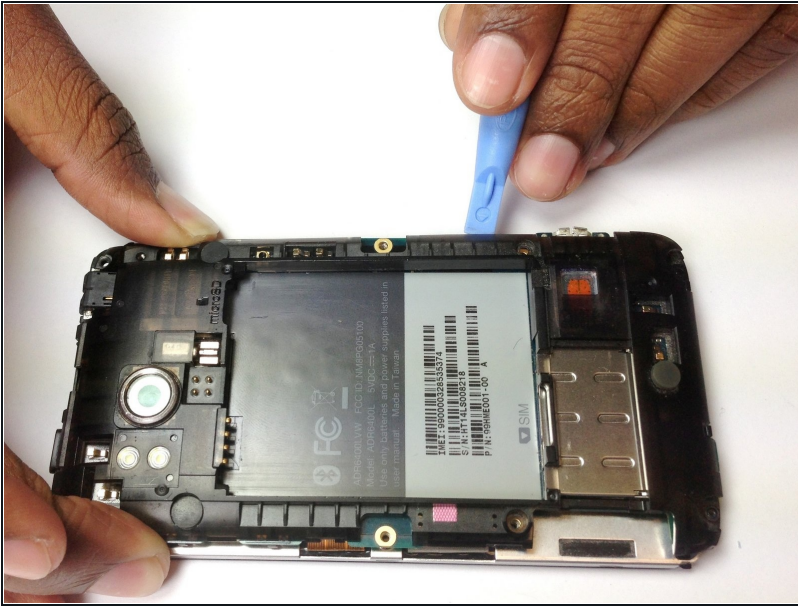
- Carefully separate the screen and phone from the rear frame, starting from the bottom.
- Gently pull down on the phone and screen to fully separate it from the rear frame.

Step 11 — Rear Inner Frame



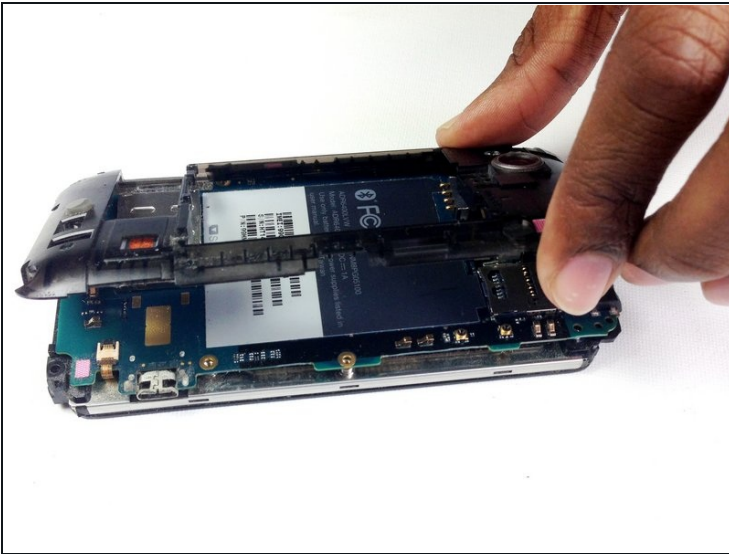
- Remove the two Phillips screws securing rear inner frame to device.

Step 12



- Insert the plastic opening tool between the rear inner frame and the motherboard and slowly work your way around the device.

Step 13



- Remove the rear inner frame from the rest of the device.

To reassemble your device, follow these instructions in reverse order.