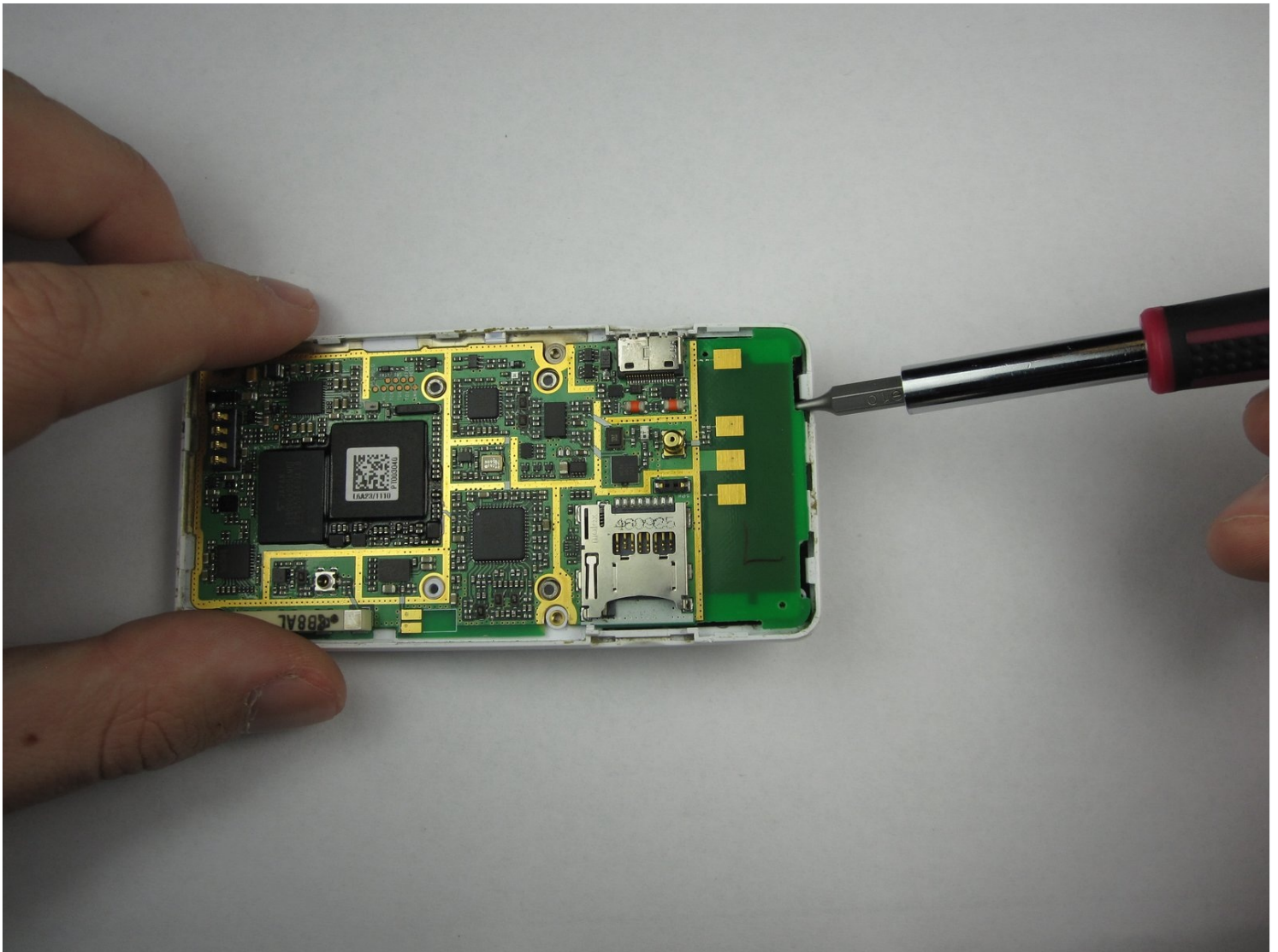




LG Chocolate Motherboard Replacement

Written By: Maci Miri

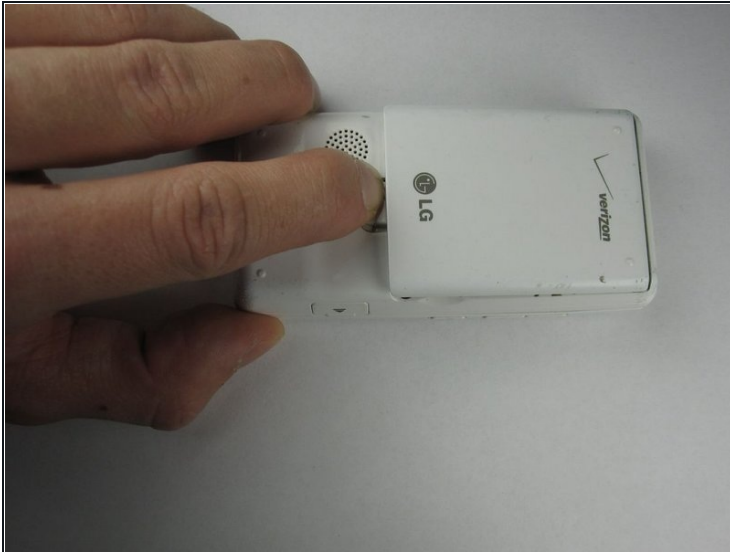


TOOLS:

Phillips #00 Screwdriver (1)

iFixit Opening Tool (1)

Step 1 — Battery



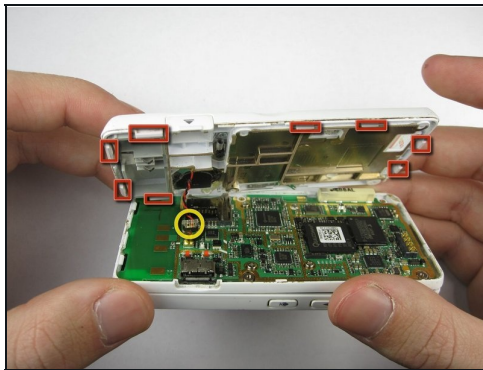
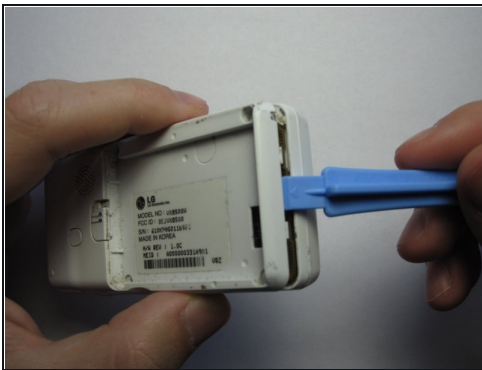
- Find a sliding button on the lower back side of the device and with your finger, slide it to the left firmly.
 - ⓘ The battery should pop out fairly easily. If not, slide the button further or grab and pull it while sliding the button.

Step 2 — Back Cover



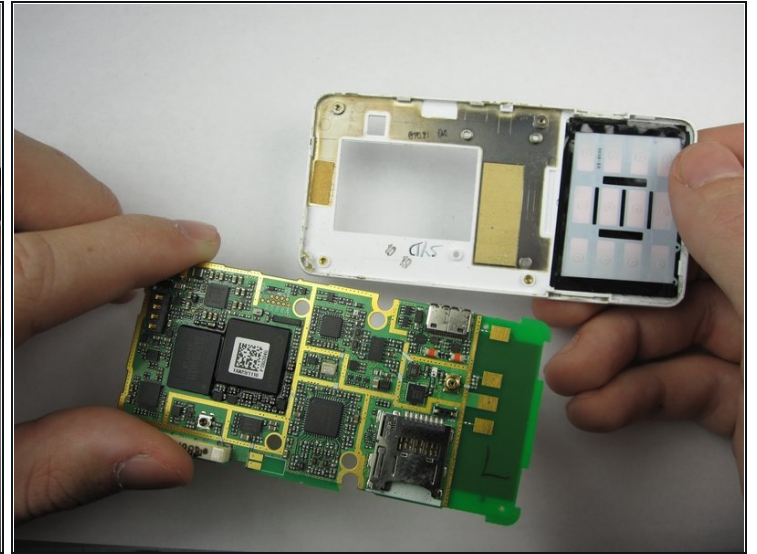
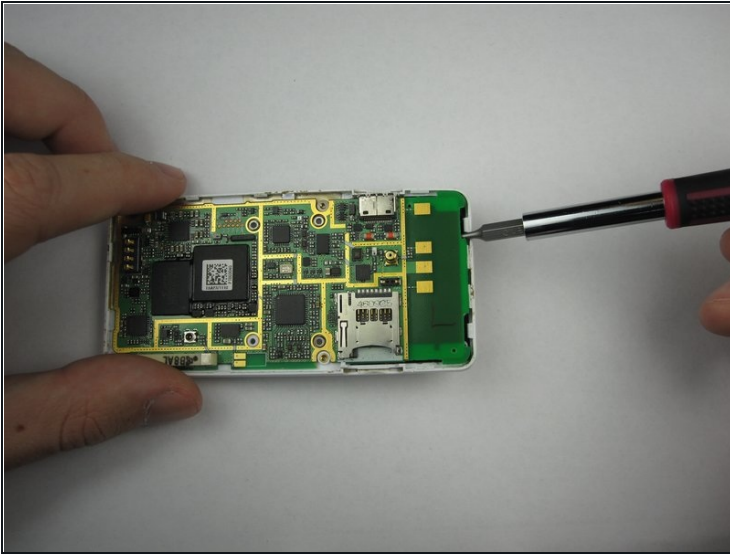
- Use a Phillips #00 screwdriver to unscrew the four Phillips #00 screws on the four corners under the battery to unfasten the back case from the phone.

Step 3



- Take the case off by using a plastic opening tool.
- Continue using the plastic opening tool around the sides of the device, unhooking the eight tabs securing the back cover to the rest of the phone as shown in the second photo.
- The back speaker will be connected to the motherboard, and must be disconnected to remove the case.

Step 4 — Motherboard



- Carefully pry the motherboard off of the back case

To reassemble your device, follow these instructions in reverse order.