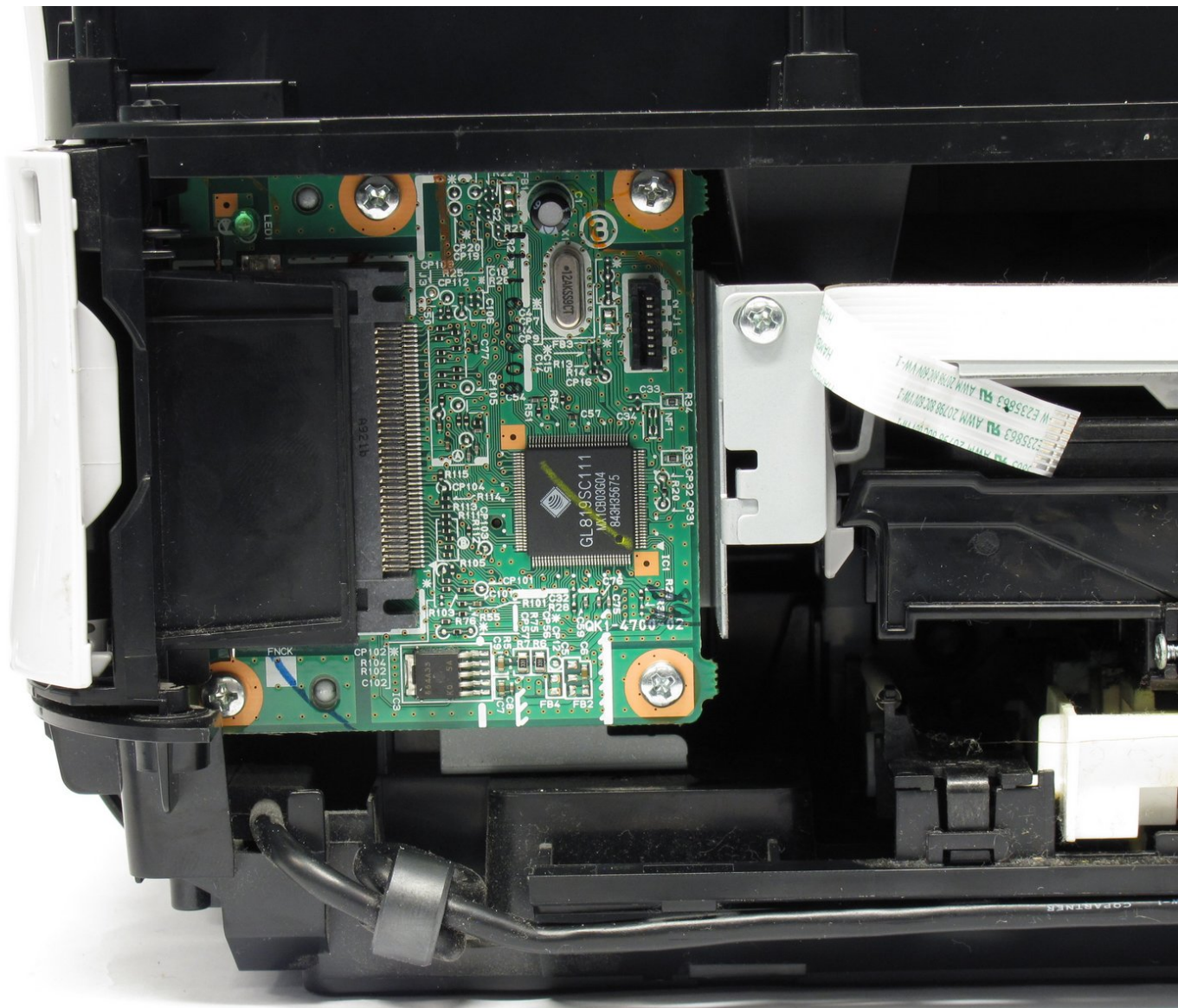




Written By: Steven MacLean



Page 1 of 16

INTRODUCTION

Please complete the dis-assembly guide before attempting to install new data ports, as it is a prerequisite.

Use this guide to replace a broken data port to get your USB and card readers back.



TOOLS:

- [Phillips #1 Screwdriver](#) (1)
- [Spudger](#) (1)



PARTS:

- [Canon Pixma MP480 Data Port](#) (1)

Step 1 — Rear and Side Panel



- Remove the two 7.9 mm screws using a Phillips #1 screwdriver.

Step 2



- Lift up the back cover to remove it.
 - ⓘ You may need to lift firmly as it requires quite a bit of force.

Step 3



- Open the front tray.

Step 4



- Open the scanner compartment.
- ⓘ Make sure the blue lever locks into place to keep the compartment open.

Step 5



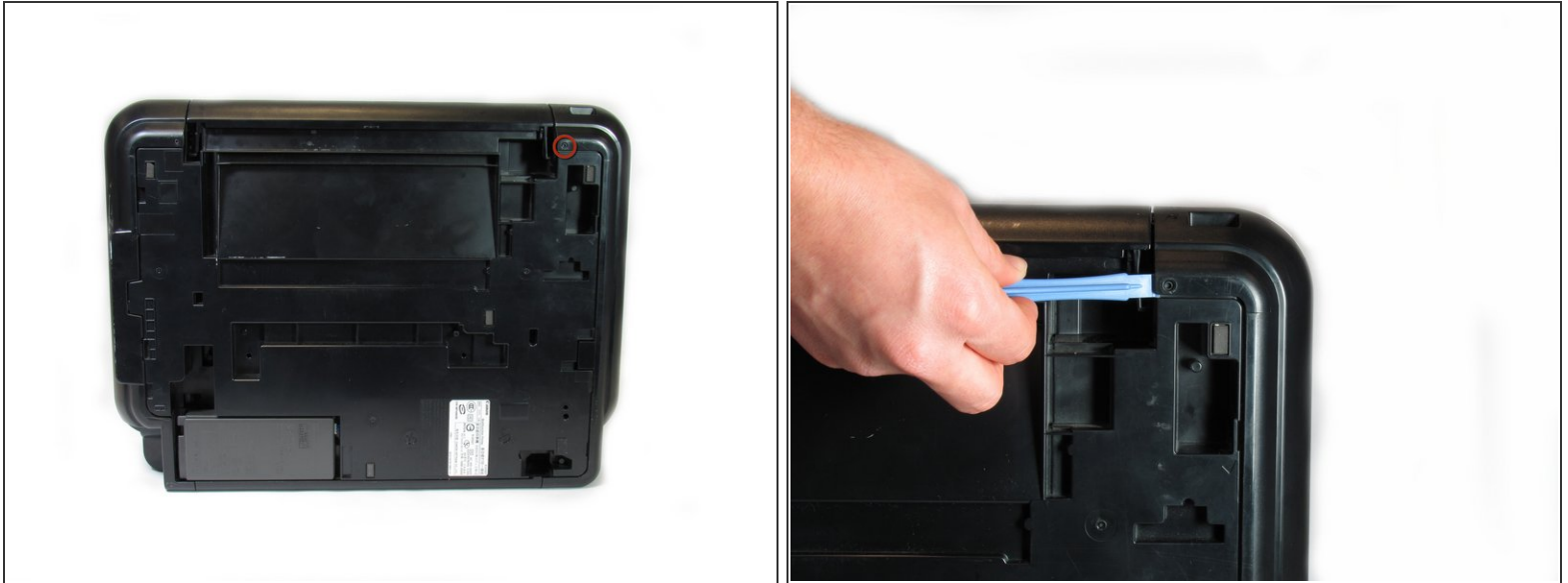
- Remove the blue lever from its slot by pushing it back and twisting clockwise.
- Close the scanner compartment and cover.

Step 6



- Pry open the side cover with the plastic opening tool.

Step 7



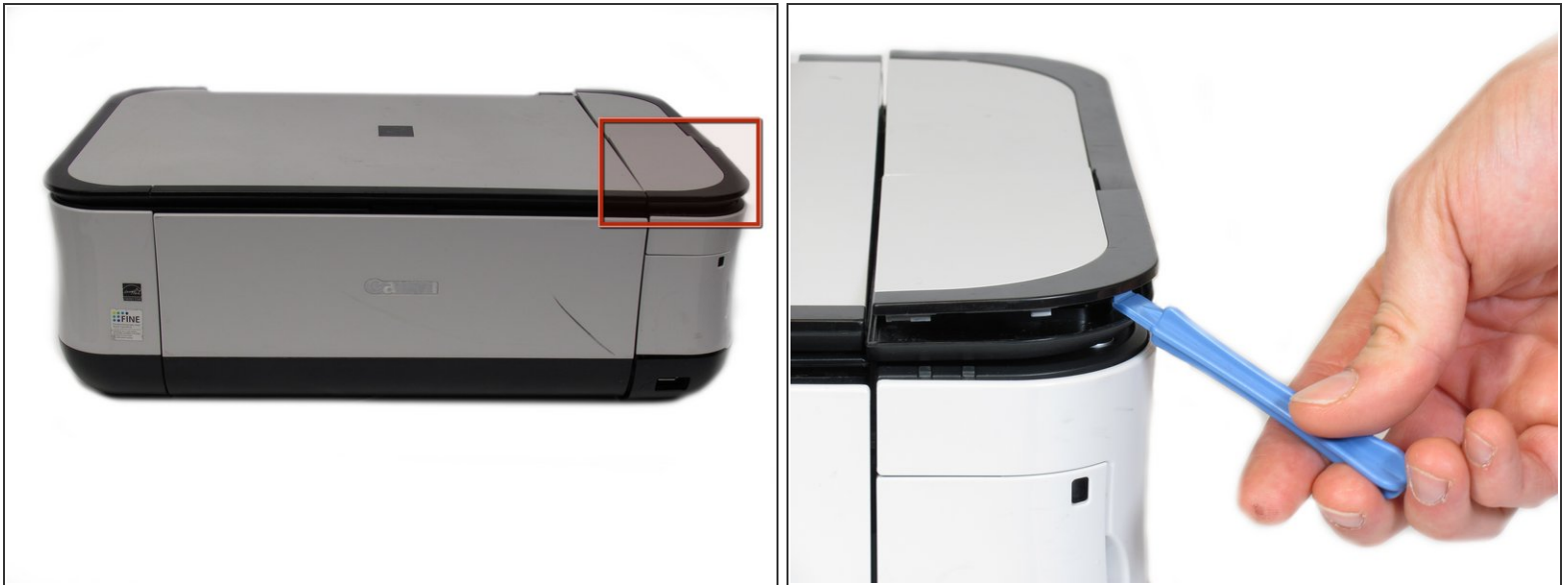
- Flip the printer over so that you are facing the bottom of the printer.
- Use the plastic opening tool to remove the corner of the side panel from the plastic pin.

Step 8



- Use the plastic opening tool to loosen the side panel from the bottom of the printer.

Step 9 — LCD



- Using the plastic opening tool, pry off the top cover of the LCD assembly.
 - ❗ Pry around the front and side edges for the easiest removal.

Step 10



- After removing the top cover of the LCD assembly, remove the LCD using the plastic opening tool.

Step 11



- Completely remove the LCD by disconnecting the ribbon cable with a gentle pull.

Step 12 — Buttons



- Locate the buttons on the printer.

Step 13



- Using the plastic opening tool, gently pry around the button cover to remove it from its fixture.

Step 14



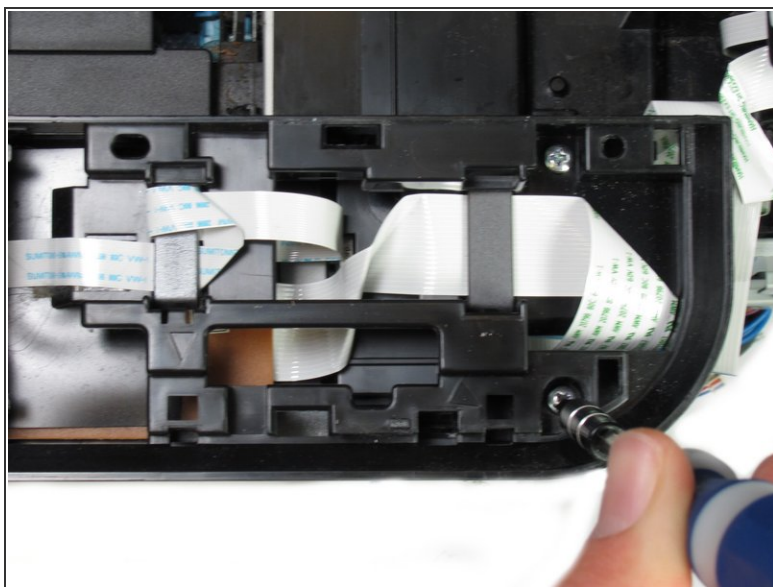
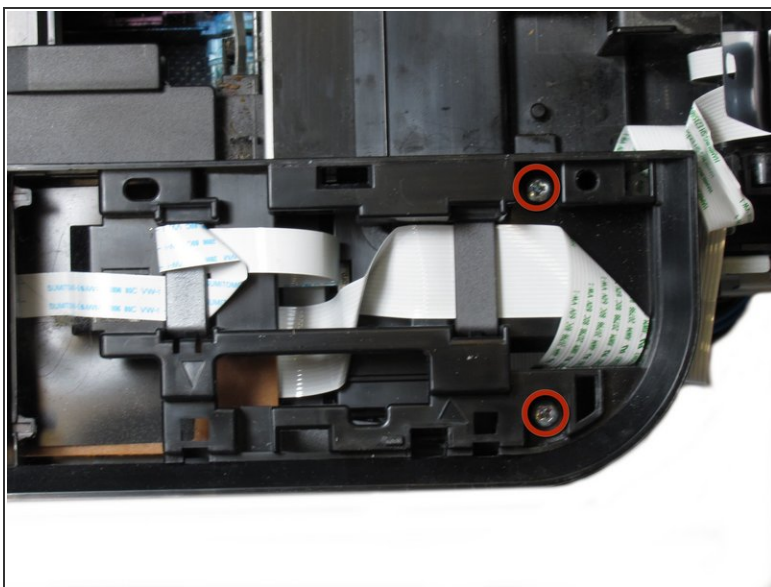
- Remove the five 7.7 mm screws using a Phillips #1 screwdriver.

Step 15



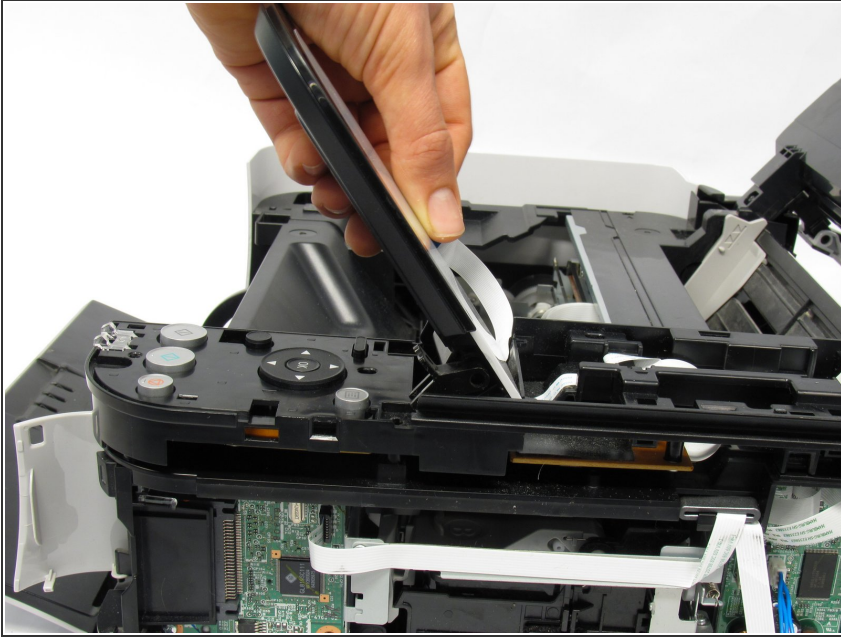
- Using the plastic opening tool, gently pry around the cover behind the LCD screen to remove it from its fixture.

Step 16



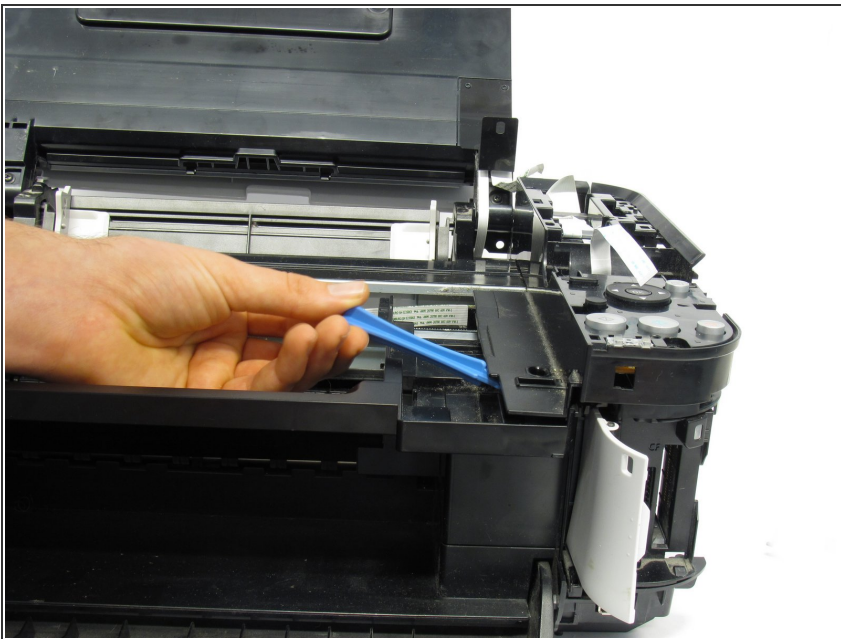
- Remove the two 7.8 mm screws using a Phillips #1 screwdriver.

Step 17



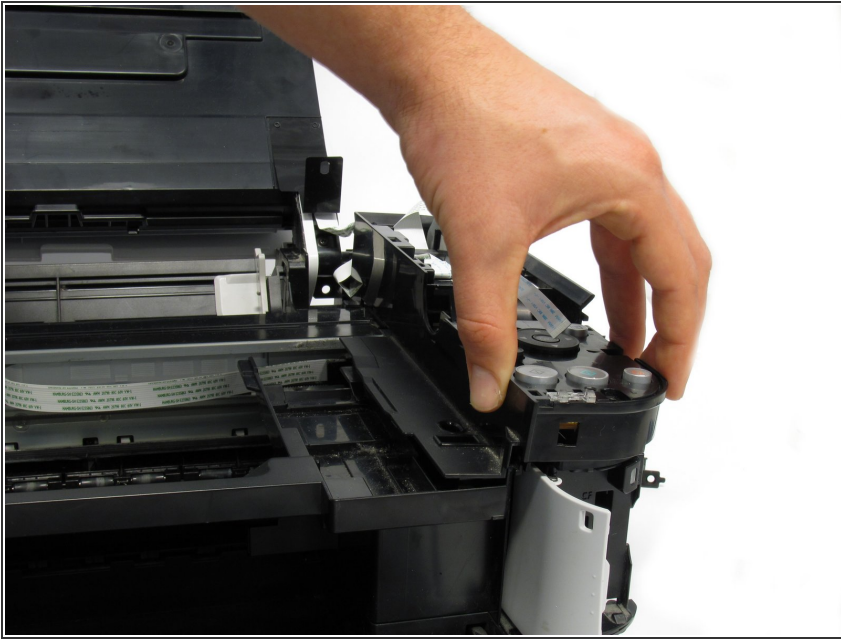
- Gently pull the LCD screen up to remove it from its fixture.

Step 18



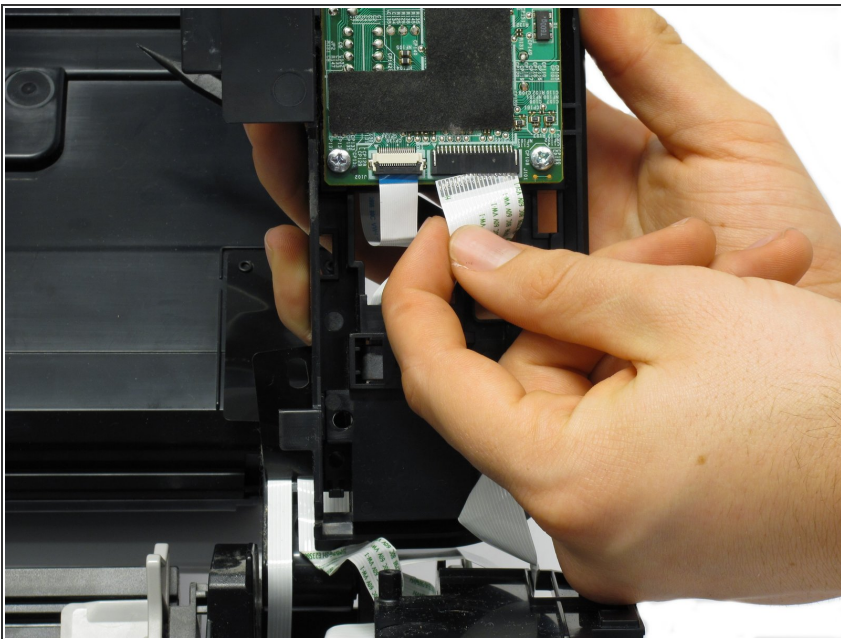
- Use the plastic opening tool to pry off the plastic button assembly.

Step 19



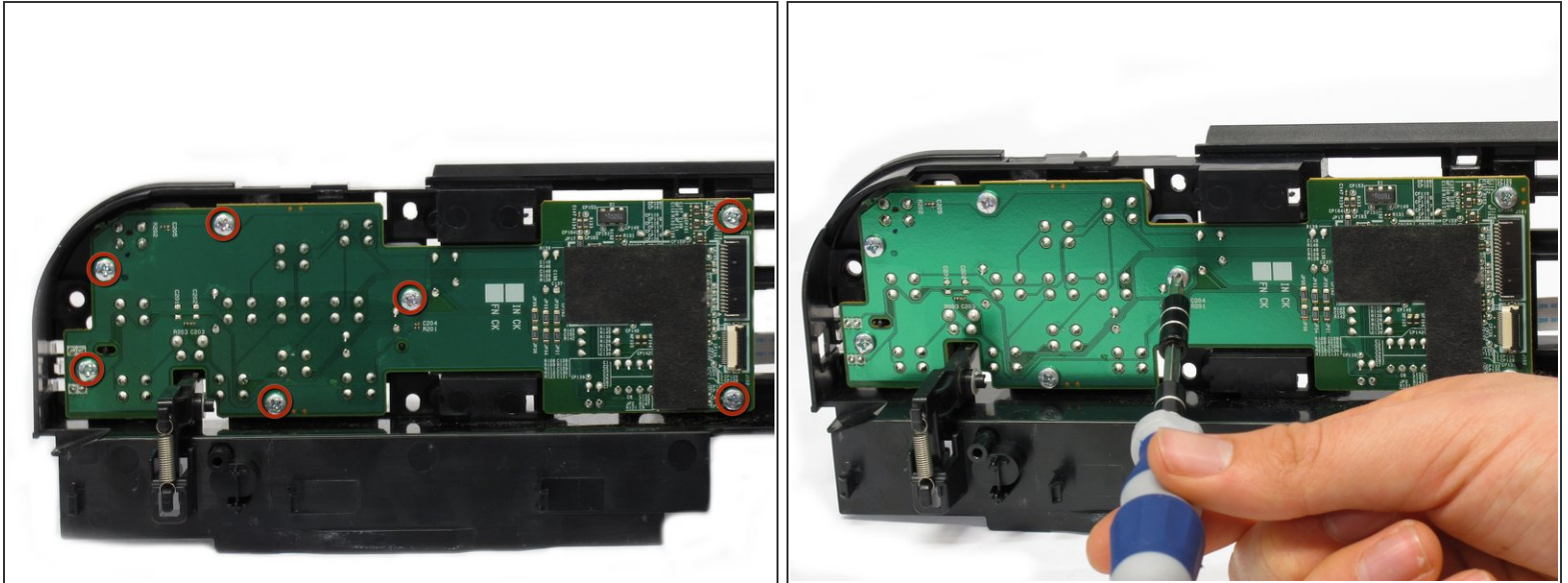
- Gently pull the plastic button assembly up to remove it.
- ⚠ The plastic button assembly has a ribbon cable connected on the bottom, so make sure to be careful pulling it.

Step 20



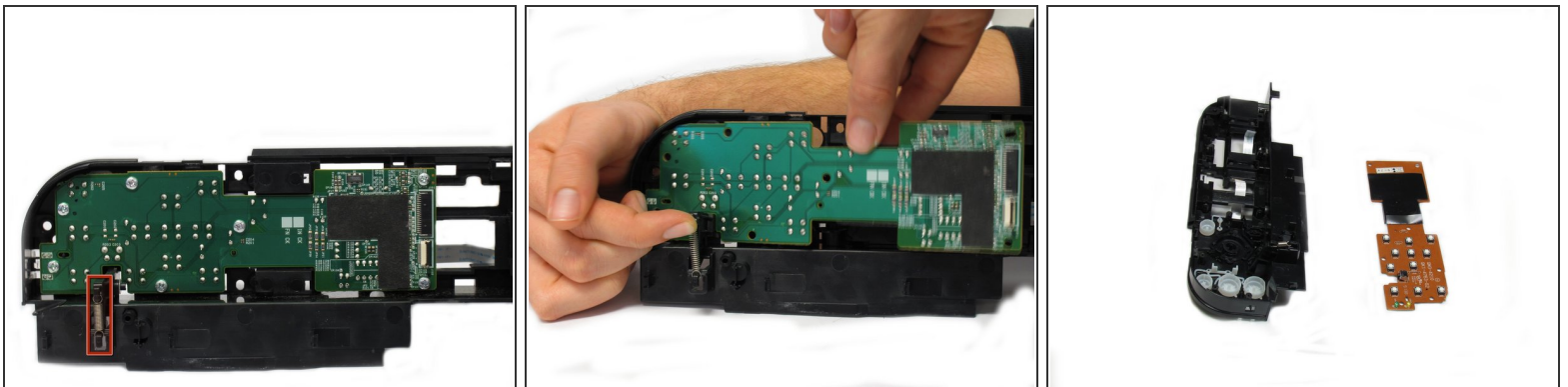
- Remove the ribbon cable connected to the backside of the plastic button assembly.

Step 21



- Remove the seven 8.7 mm screws using the Phillips #1 screwdriver.

Step 22



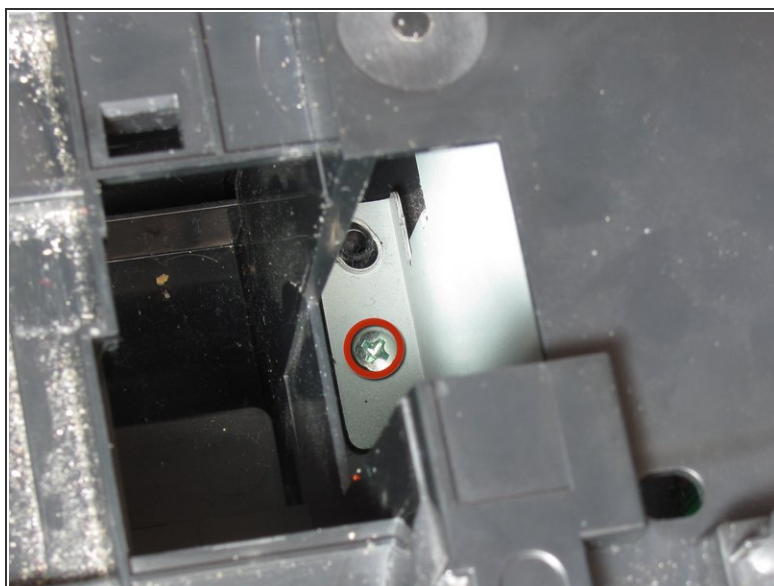
- Locate the spring that holds the PCB in place on the bottom left of the plastic button assembly.
- Gently lift the spring and pull the board out of its plastic button assembly.

Step 23



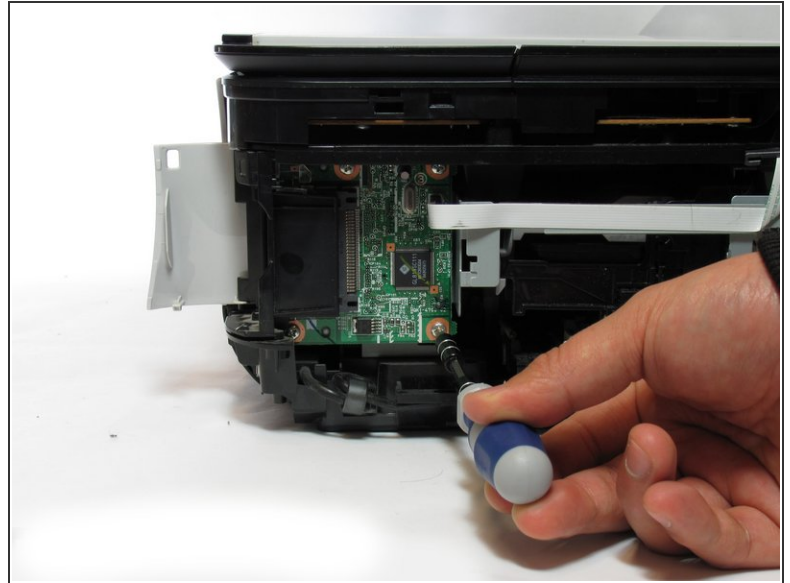
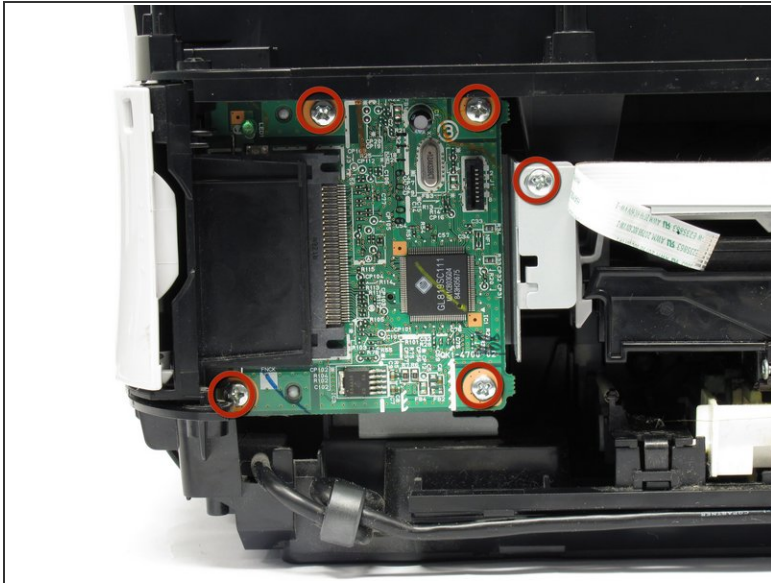
- Remove the buttons from the plastic button assembly.

Step 24 — Data Port



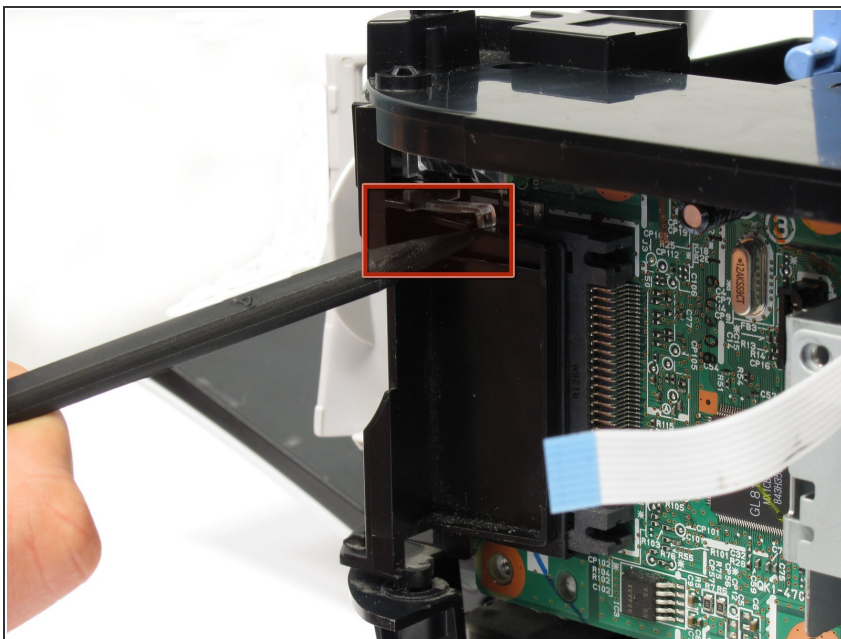
- Remove the screw using the Phillips #1 screwdriver.
- 7.5 mm Phillips #1 screw

Step 25



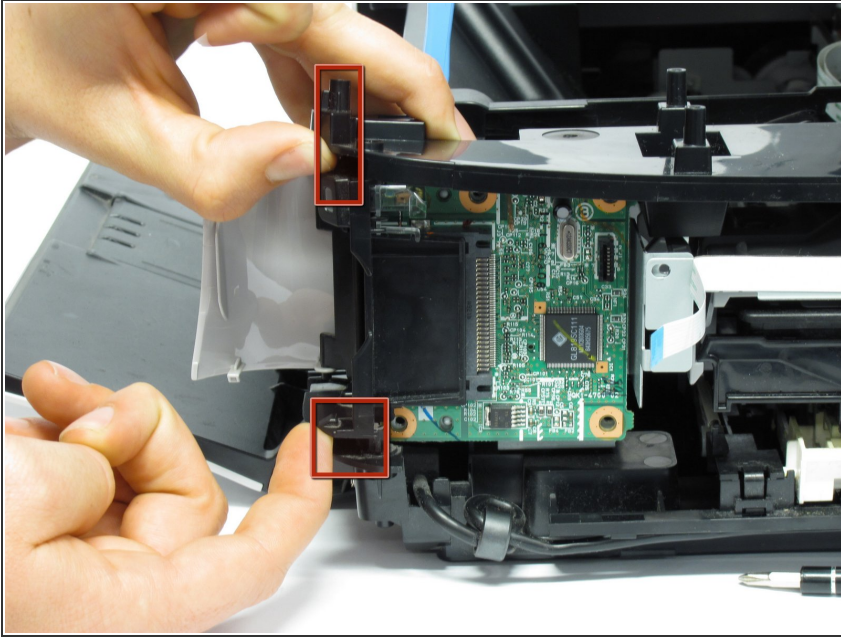
- Remove the five screws using the Phillips #1 screwdriver.
- Five 3.5 mm Phillips #1 screws

Step 26



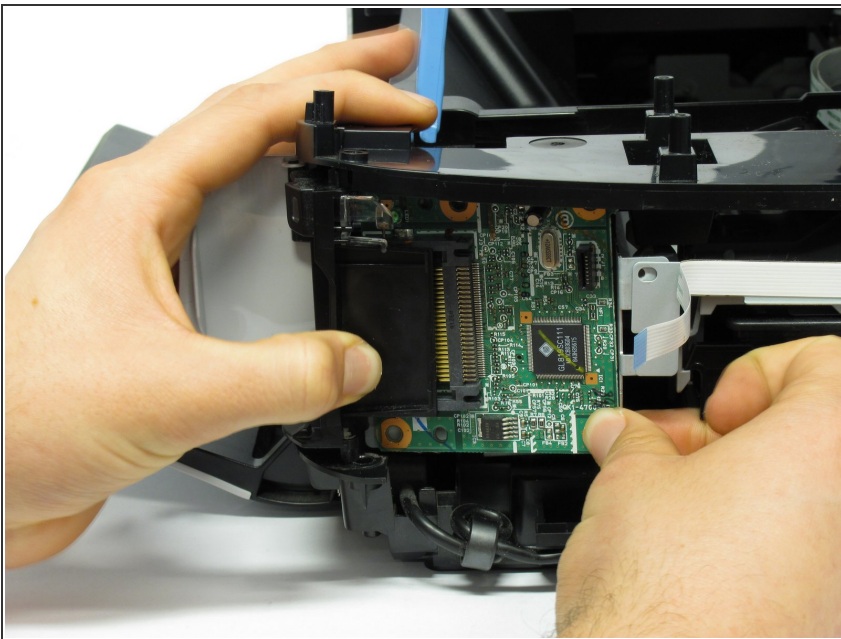
- Remove the small plastic clip using the spudger.
- Small plastic clip

Step 27



- Pull plastic inserts out of the holes in the top and bottom.
- Top and bottom plastic inserts

Step 28



- Completely remove the board from the printer by pulling the board towards the back of the printer.
- ⓘ This requires effort and time as the board comes out little by little.

To reassemble your device, follow these instructions in reverse order.