



# iPhone 11 Pro SIM Card Replacement

Eject the physical SIM card tray to replace the network SIM card in your iPhone 11 Pro.

Written By: Jeff Suovanen



## INTRODUCTION

Use this guide to remove or replace the SIM card in your iPhone 11 Pro. This guide is for the physical SIM card only; the embedded SIM (eSIM) is silicon-based and cannot be removed.



### TOOLS:

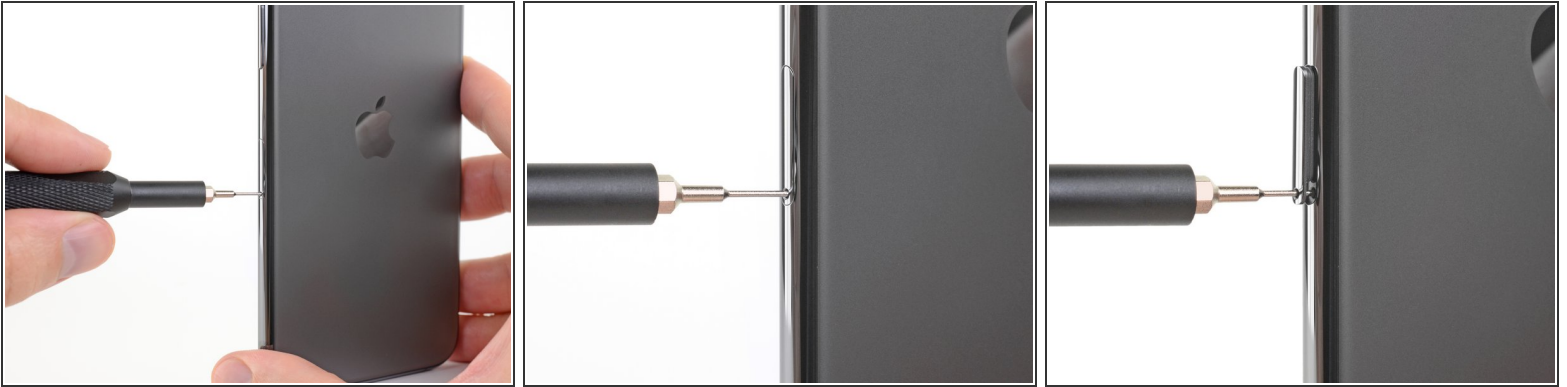
- [SIM Card Eject Tool](#) (1)



### PARTS:

- [iPhone 11 Pro/11 Pro Max Single SIM Card Tray](#) (1)
- [iPhone 11 Pro/11 Pro Max Dual SIM Card Tray](#) (1)

## Step 1 — Eject the SIM card tray



- Insert a SIM card ejector tool or a paperclip into the small hole in the SIM card tray, located near the side button on the edge of the iPhone.
- Press firmly to eject the tray.

## Step 2 — Remove the SIM card tray



- Remove the SIM card tray from the iPhone.
  - ⓘ The SIM card will fall out of the tray easily.
- ☑ When reinserting the SIM card, make sure it's in the proper orientation inside the tray.
- ☑ A thin rubber gasket around the SIM tray provides water and dust protection. If this gasket is damaged or missing, replace the gasket or the entire SIM tray to protect your iPhone's internal components.

To reassemble your device, follow these instructions in reverse order.

This document was generated on 2021-11-24 02:38:29 PM (MST).

