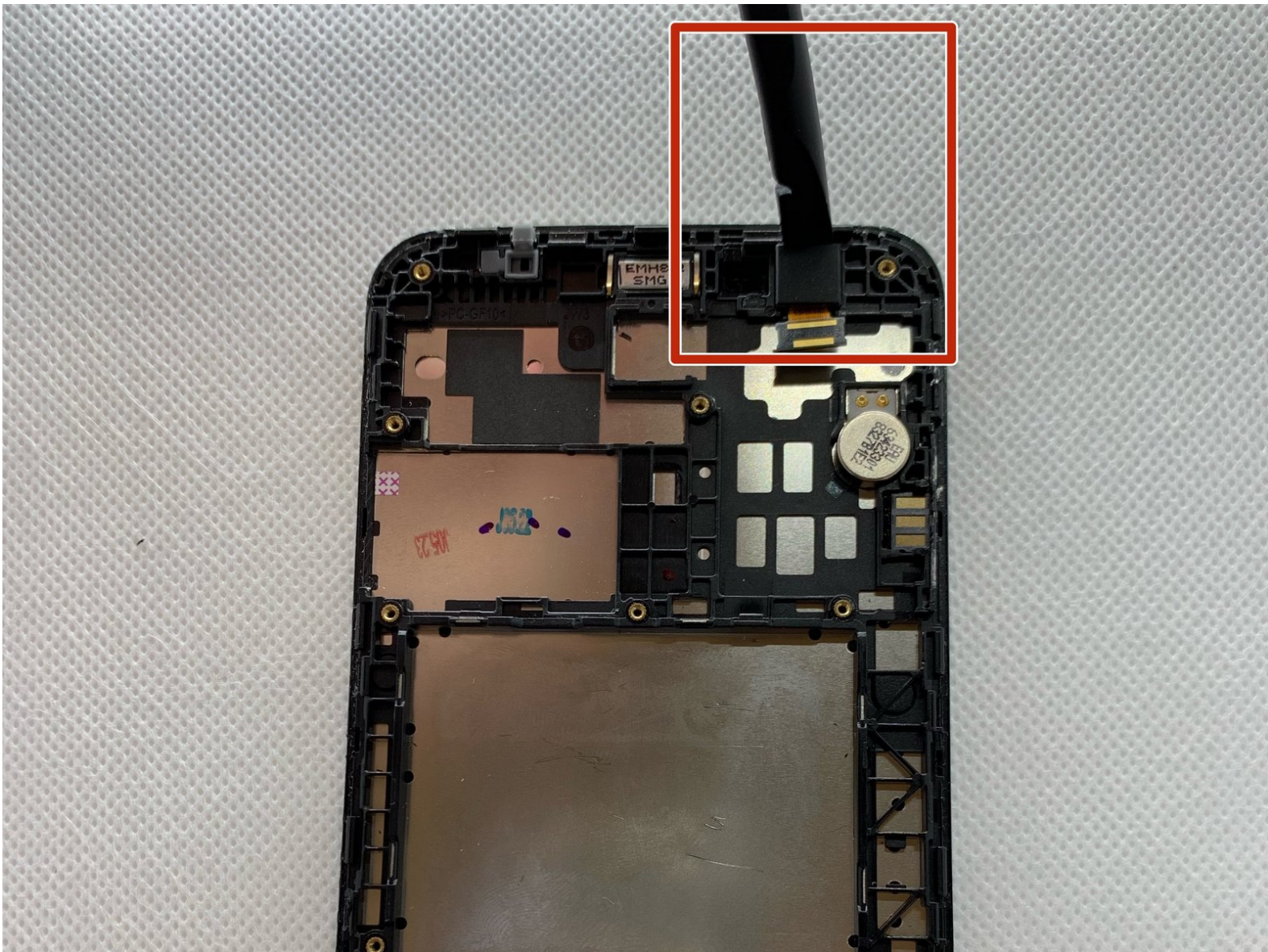




LG K30 Screen Replacement

How to replace the screen with frame for the LG K30 phone.

Written By: Alisha Lee



INTRODUCTION

This guide will show you how to replace the screen touch digitizer display with frame for LG K30.

Make sure that when prying the front-facing camera off of the frame, use caution so as not to cause any damage to the connecting points or to the frame.



TOOLS:

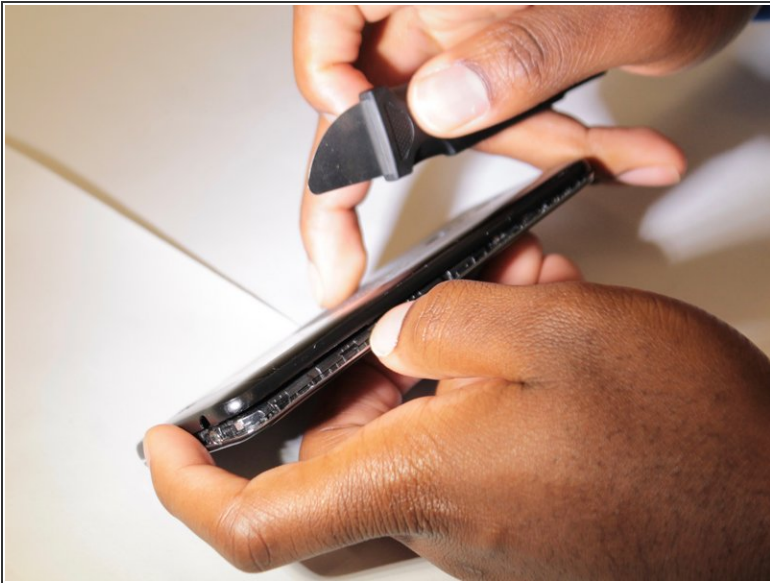
- [Jimmy](#) (1)
- [Metal Spudger](#) (1)
- [Phillips #00 Screwdriver](#) (1)
- [Spudger](#) (1)



PARTS:

- [LG K30 screen with frame](#) (1)

Step 1 — Battery



⚠ Before disassembling your LG K30, discharge the battery below 25%. A charged lithium-ion battery can catch fire and/or explode if accidentally punctured.

- Power off your Phone before beginning disassembly.
- Use the 'Jimmy' and 'Metal Spudger' to slowly pry open the outsides of the back case.

Step 2



- Remove the thirteen 3.4 mm Phillips #00 screws securing the midframe to the display assembly.

Step 3



- Use a metal spudger or plastic opening tool to pry open the outer cover.

Step 4



- Use the flat end of a spudger to detach the battery connector from the logic board.

Step 5



- Use a spudger to pry the battery from the phone.
- ⓘ There may be an adhesive on the back of the battery and the phone. Pry the battery gently to prevent puncture or damage.
- ⚠ Do not bend or puncture the battery.

Step 6 — Motherboard



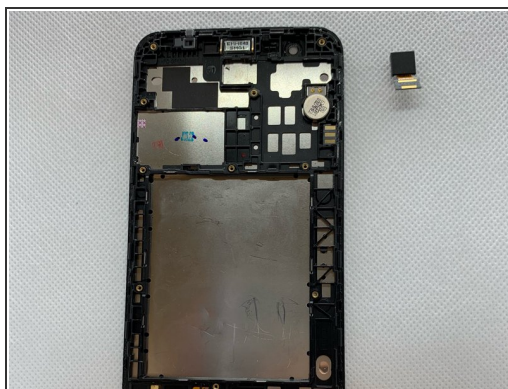
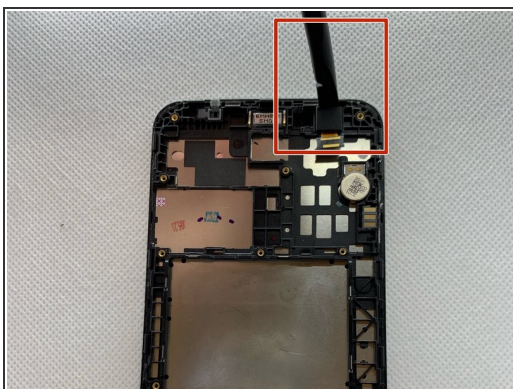
- Use a spudger to carefully disconnect the front camera connector.
- Use a spudger to disconnect the display cable connector.

Step 7



- Remove the motherboard assembly from the display assembly with the a spudger or hand.

Step 8 — Screen



- Gently pry out front-facing camera with plastic spudger.
- Re-assemble with replacement screen/frame.

To reassemble your device, follow these instructions in reverse order.