



LG Chocolate Back Cover Replacement

The LG Chocolate VX 8500 You will learn how to...

Written By: Forrest Lipske



INTRODUCTION

The LG Chocolate VX 8500

You will learn how to replace the back cover of an LG Chocolate

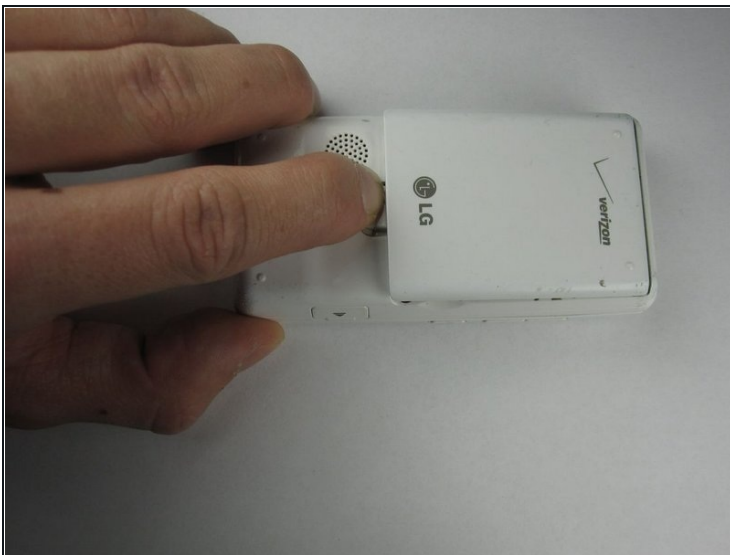
The back cover of the LG chocolate helps the battery stay in place, and without the back cover the battery can potentially fall out which can create a whole separate problem.

If your device has a swollen battery or its showing symptoms of a swollen battery make sure you don't put it on the charger. Run the battery down as low as you can to reduce any risk of fire or smoke

TOOLS:

Phillips #00 Screwdriver (1)

Step 1 — Battery



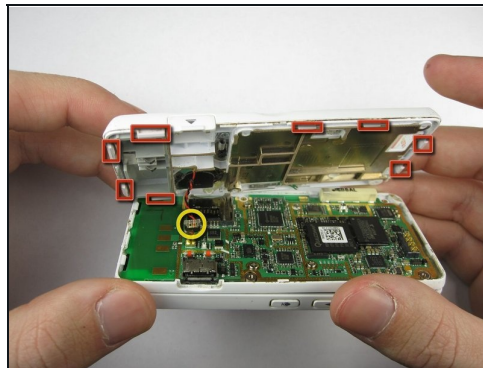
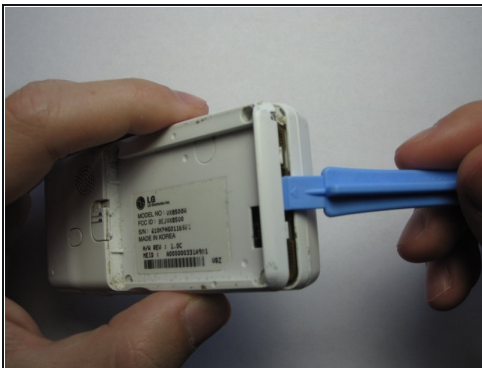
- Find a sliding button on the lower back side of the device and with your finger, slide it to the left firmly.
 - ① The battery should pop out fairly easily. If not, slide the button further or grab and pull it while sliding the button.

Step 2 — Back Cover



- Use a Phillips #00 screwdriver to unscrew the four Phillips #00 screws on the four corners under the battery to unfasten the back case from the phone.

Step 3



- Take the case off by using a plastic opening tool.
- Continue using the plastic opening tool around the sides of the device, unhooking the eight tabs securing the back cover to the rest of the phone as shown in the second photo.
- The back speaker will be connected to the motherboard, and must be disconnected to remove the case.

To reassemble your device, follow these instructions in reverse order.