



A photograph of a disassembled Canon PowerShot S500 digital camera. The components are laid out on a green grid background. The main body of the camera is on the right, showing the lens barrel with '5.0 MP' and 'DIGITAL ELPH' text. To its left is the lens assembly with the lens element visible. Below the lens assembly is the sensor and image processor board, labeled 'CM1-2316'. Other components include the LCD screen, various connectors, and internal structural parts. The disassembly is complete, showing the internal architecture of the compact camera.

INTRODUCTION

My old Canon PowerShot S500 digital camera stopped working suddenly one day.

The camera would beep loudly and display an ["E18" error code](#) on the LCD when you tried to power it on. This code means the lens is stuck and won't extend/retract - this is a common problem with many Canon PowerShot cameras. I assumed some dirt or grit got inside and jammed up the lens.

Attempts to unjam the lens via external methods failed, so with nothing to lose I decided to take the camera apart and attempt to fix it.

The following photos show how to dismantle the S500.

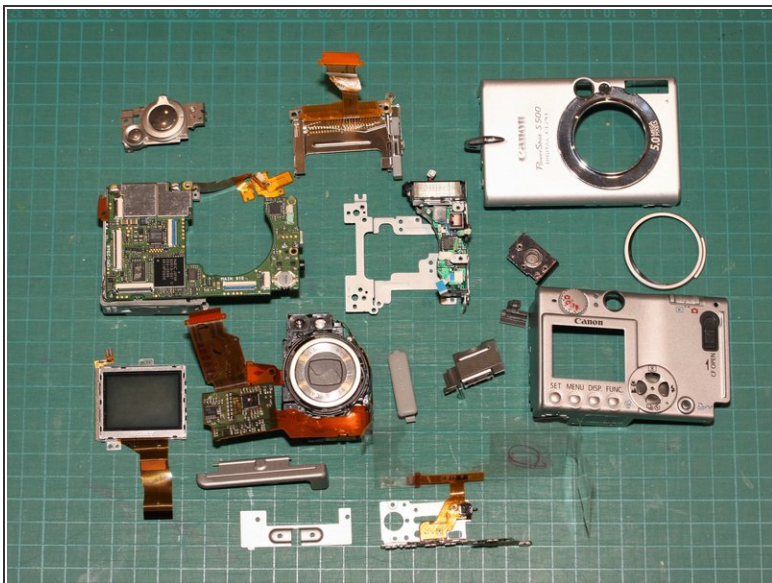
(FYI the PowerShot S500 is a 5 megapixel camera introduced in Feb 2004)



TOOLS:

- [Phillips #1 Screwdriver](#) (1)
 - [Phillips #0 Screwdriver](#) (1)
 - [Tweezers](#) (1)
-

Step 1 — Canon PowerShot S500 Teardown



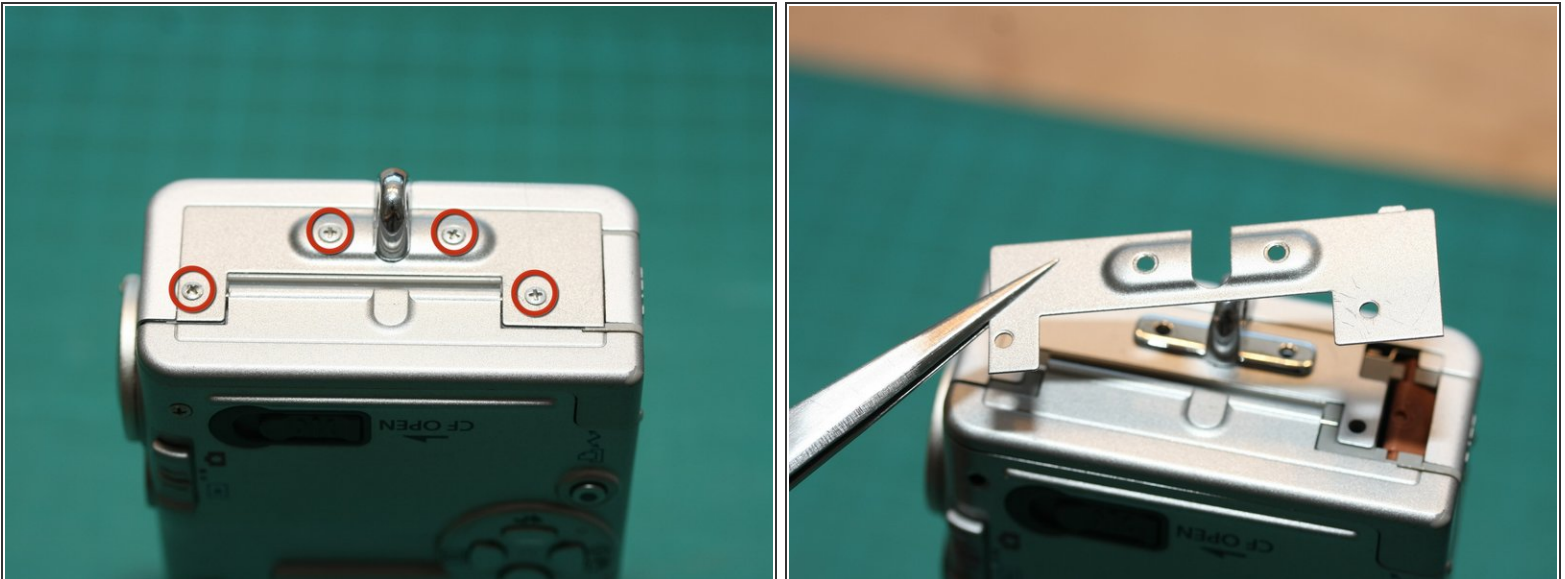
- Here are all the components of my disassembled Canon PowerShot S500, excluding the battery and screws.
- The second photo show what the camera looks like before (and hopefully again after!) repair. *(yes, I was able to put it all back together again!)*
- Follow along to see how to take apart and repair this camera, and to see what's inside...

Step 2



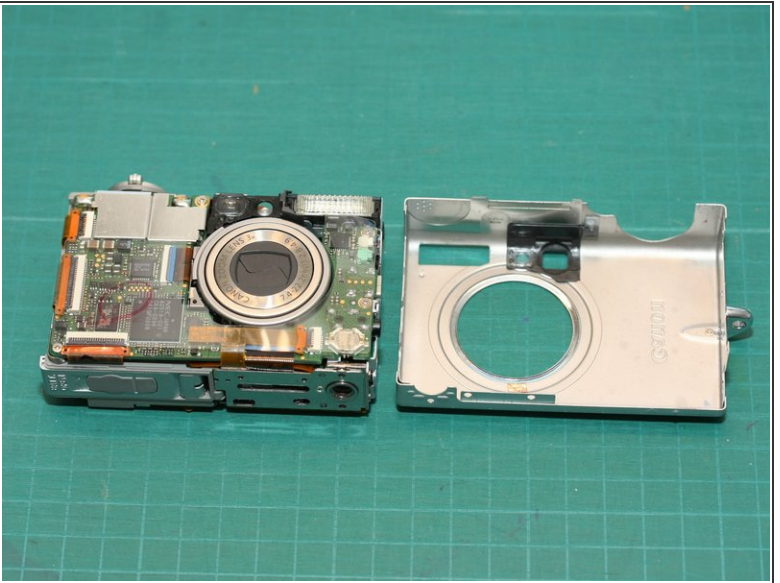
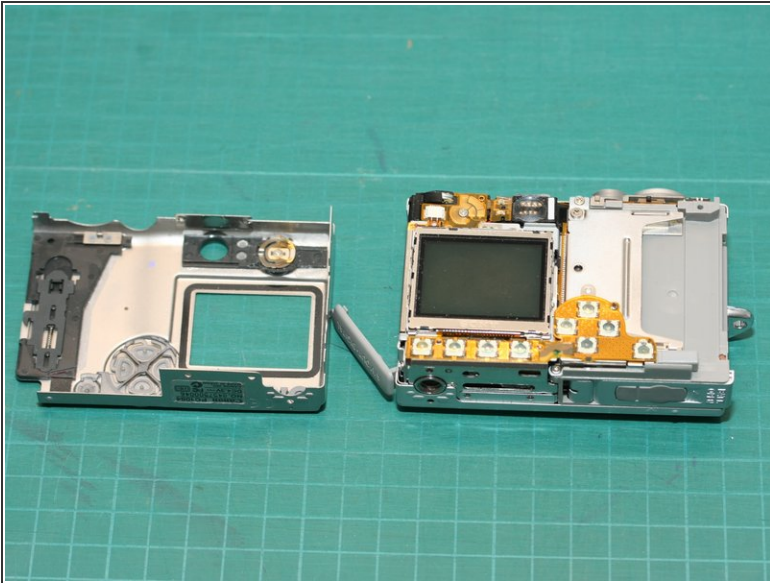
- Using a small Phillips screwdriver, remove the screw on the top right of the back of the camera.
- Remove the 4 screws on the bottom of the camera near the tripod socket
- Remove 2 screws on the side with the USB connector cover (one of the screws is underneath the cover)

Step 3



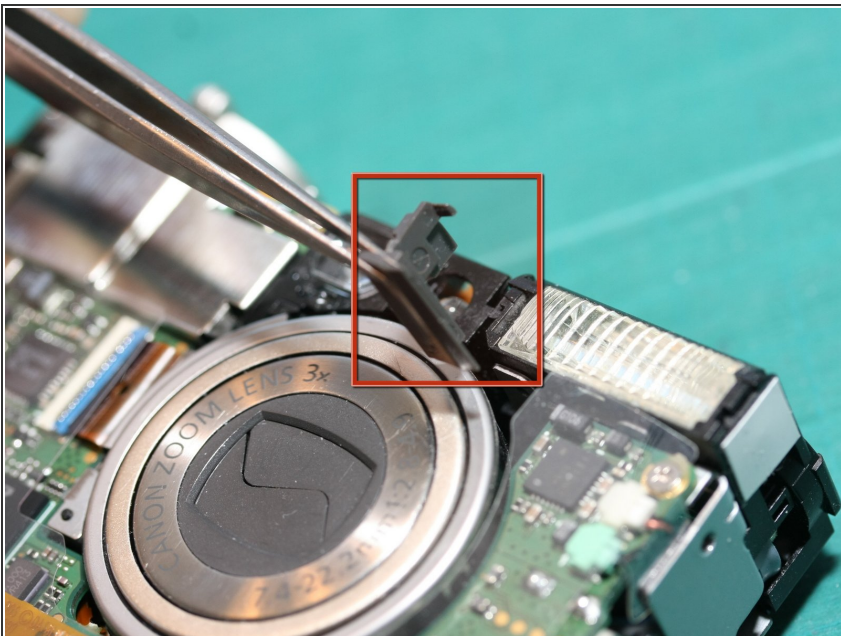
- On the other side of the camera, remove the 4 screws near the wrist strap mounting lug.
- Remove the small metal plate. This will also free the Compact Flash door.

Step 4



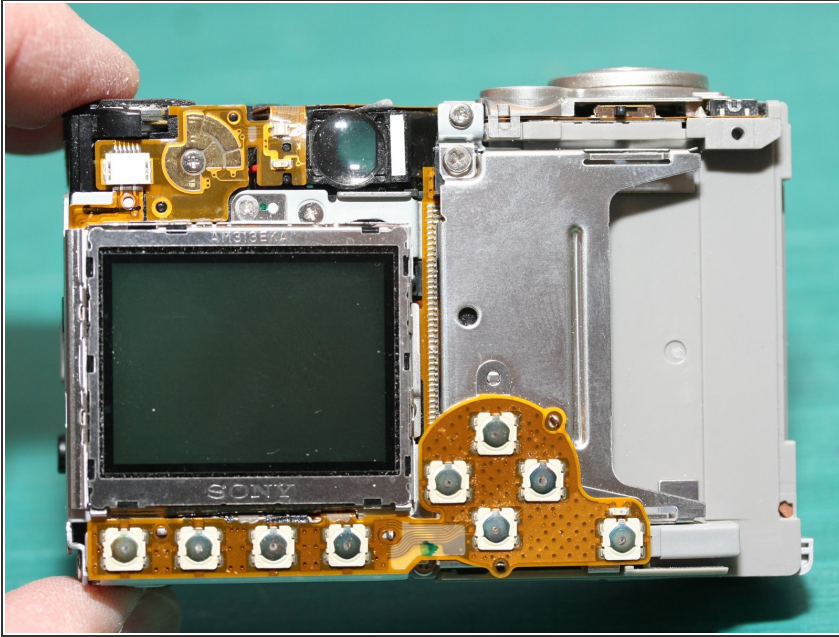
- You can now remove both the front and rear shells of the camera body
- ⓘ Thank goodness the camera body is held together by screws for easy disassembly! Many other Canon PowerShot cameras are constructed similarly.

Step 5



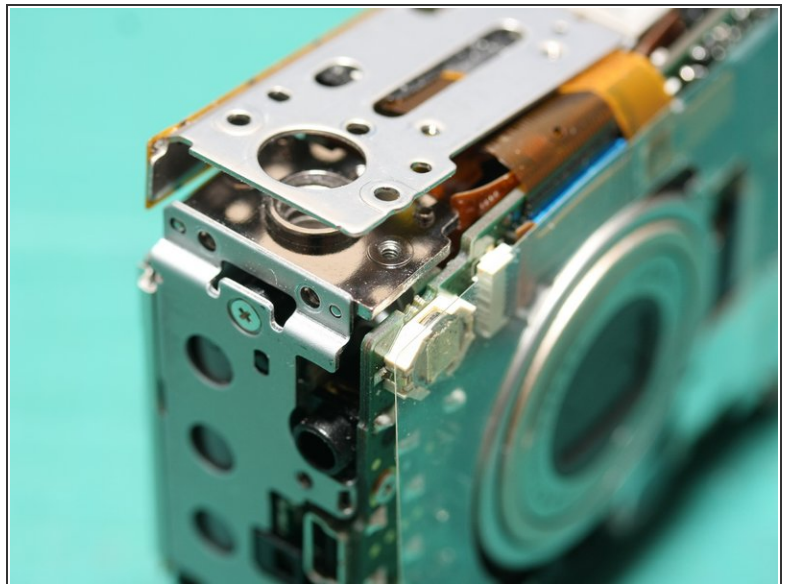
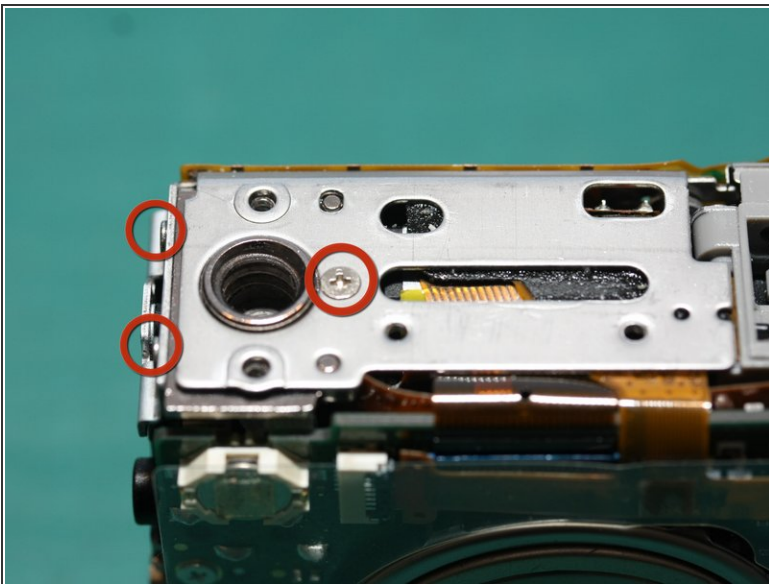
- ⚠ There's a small loose black plastic piece in the space beside the flash. At first it dropped out and I didn't notice where it came from!
- Remove the plastic piece, noting where to re-install it later

Step 6



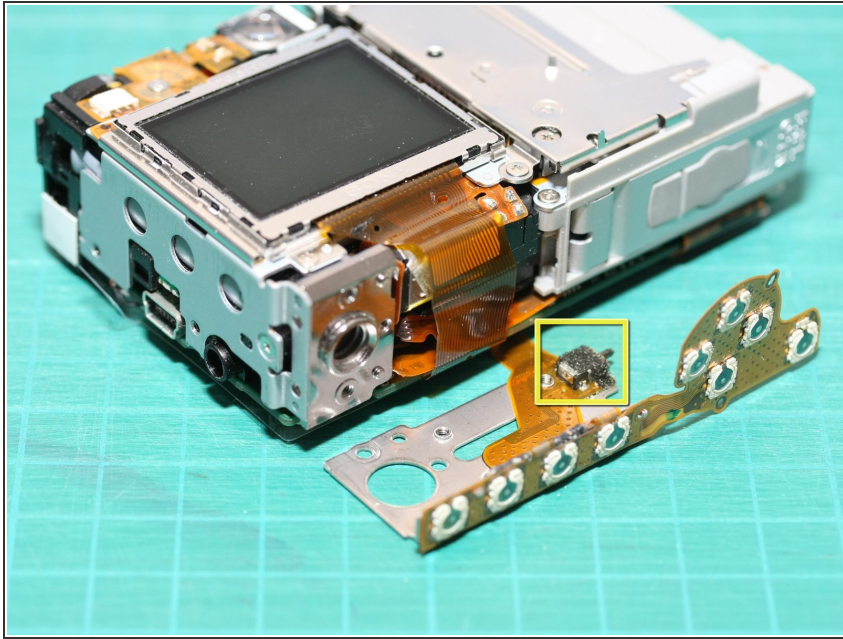
- Here is the back of the camera without the shell. You can see the switch contacts on the flex circuit along the bottom. They're attached to the small metal plate that we'll remove in the next step...

Step 7



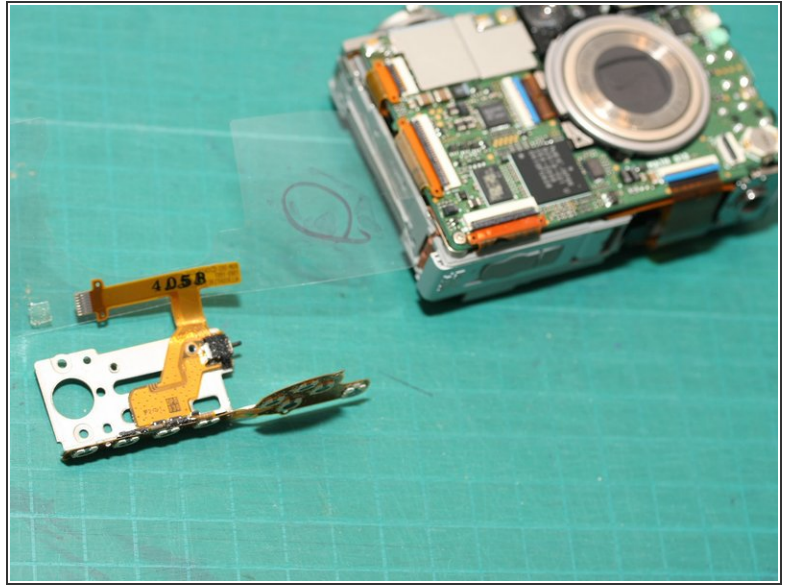
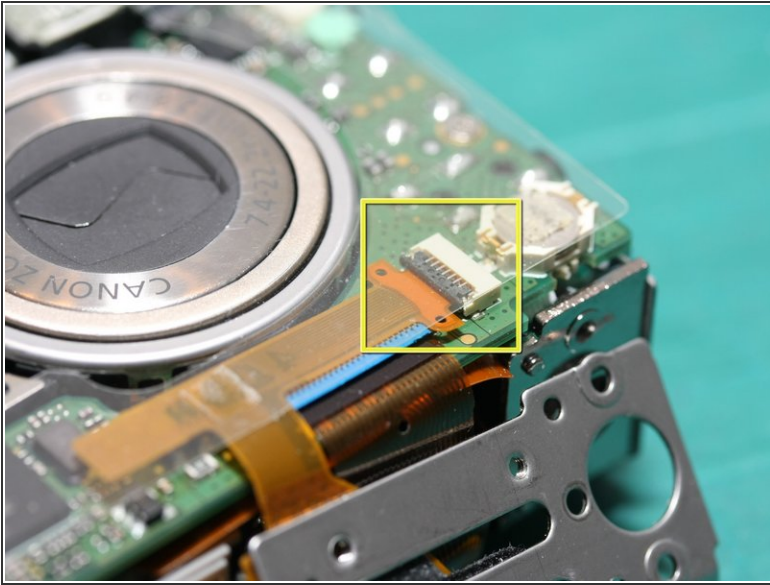
- Remove the screw on the bottom plate. While we're at it, there are 2 screws on the side near here (2 circles at left). They hold the tripod socket to the side frame.
- With the 3 screws removed, you can now gently lift off the bottom metal plate.

Step 8



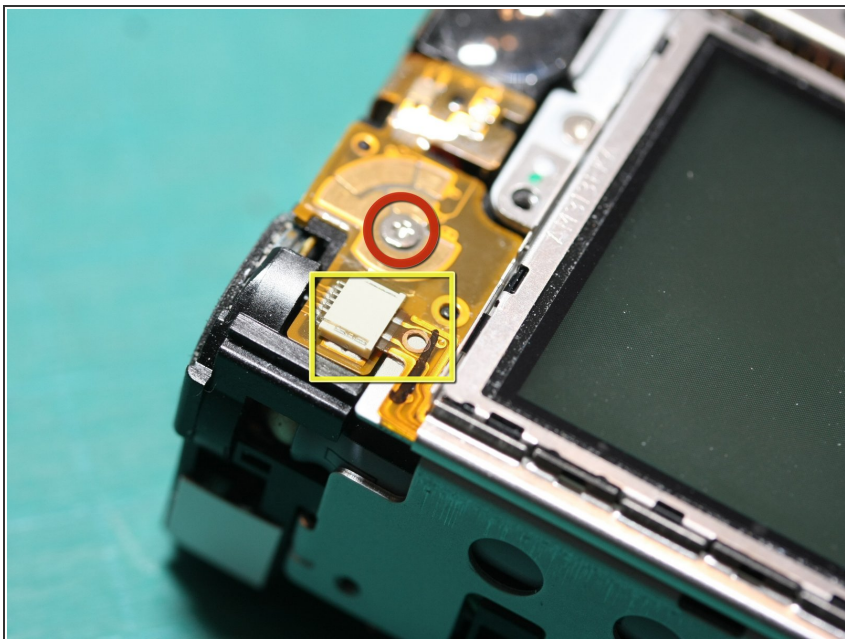
- Here's the bottom plate removed. There's still a flat ribbon cable connecting it to the camera...
- You can see a small black microswitch on the right end of the metal plate. The switch detects whether the battery door is closed or open.

Step 9



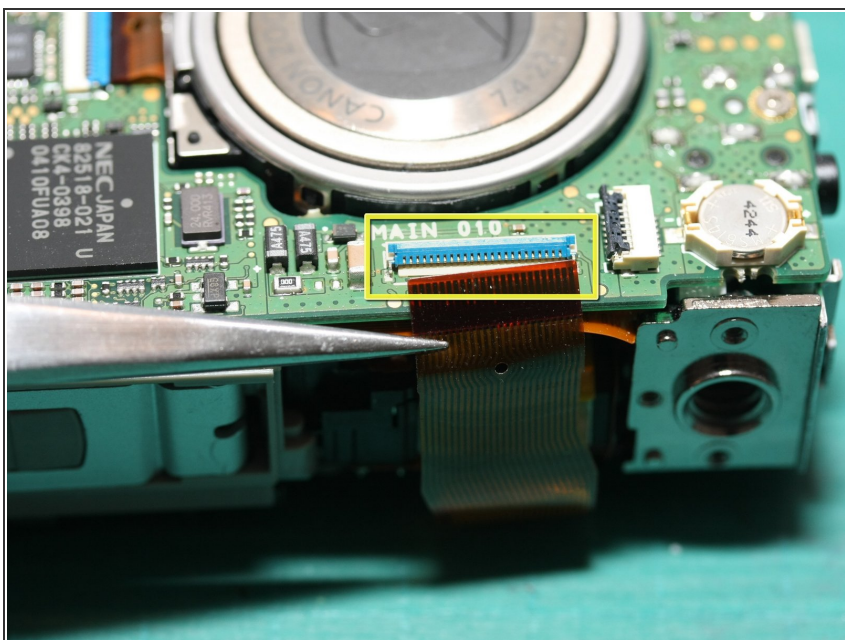
- ... gently flip up the black catch at the edge of the ribbon cable connector. You can now pull the ribbon cable out of the connector.
- In the 2nd photo, you can see the bottom plate, along with rear button switches, and battery door microswitch.
- Note: there is still a clear plastic insulating sheet attached between this assembly and the camera. It will be detached at a later step.

Step 10



- Remove the screw holding the flex circuit under the mode switch (red circle).
- The yellow square points out a small ribbon cable going to the LCD screen. This ribbon cable powers the backlight for the LCD display. Gently pull out the ribbon cable from the connector.

Step 11

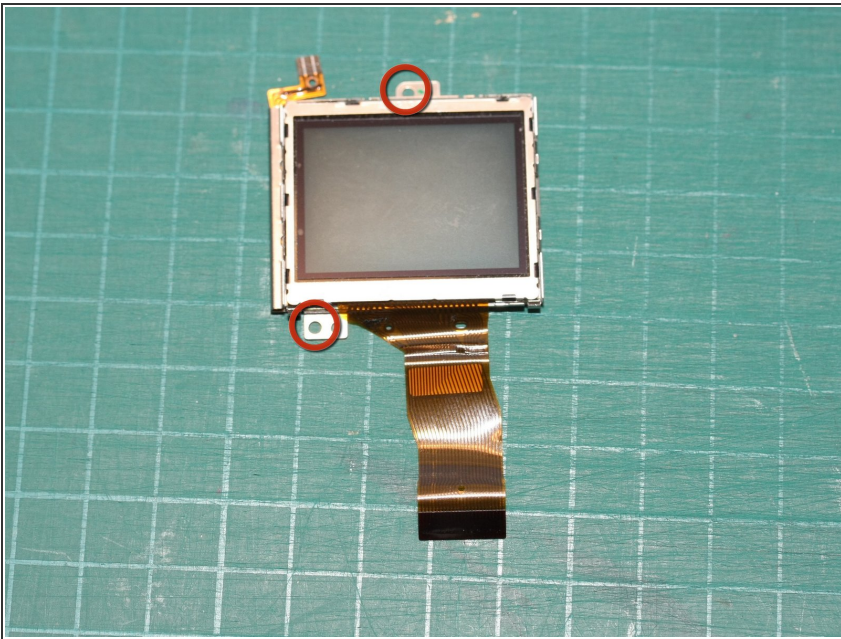


- On the front of the camera is a 2nd ribbon cable going under the camera to the LCD screen - this one

contains the data and timing signals which drive the display.

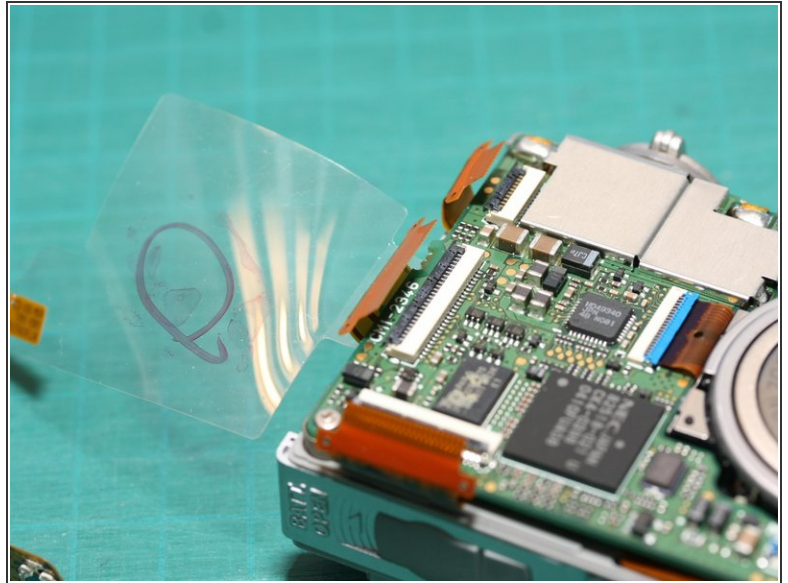
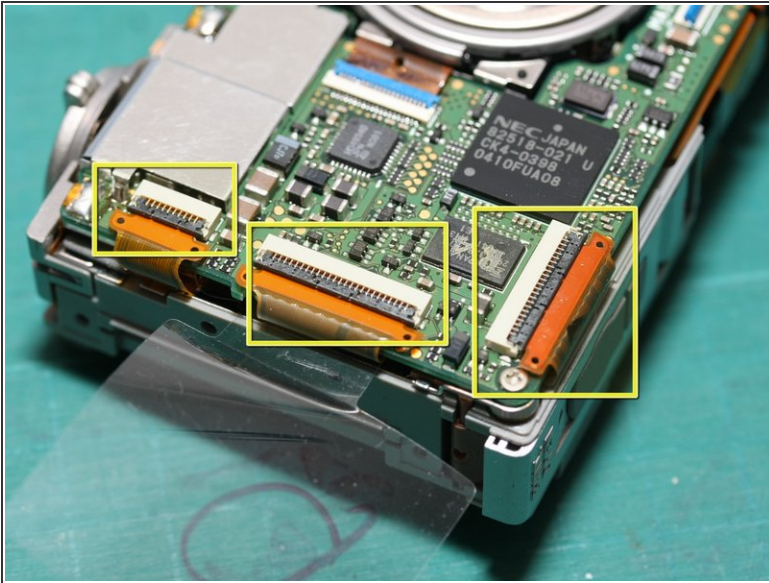
- Carefully lift the black plastic latch and then pull the ribbon cable out of its connector
- ⓘ The large black integrated circuit on the left is an NEC microprocessor, apparently a custom variant of an 80186. Above the tripod socket is a small battery - for maintaining the real-time clock.

Step 12



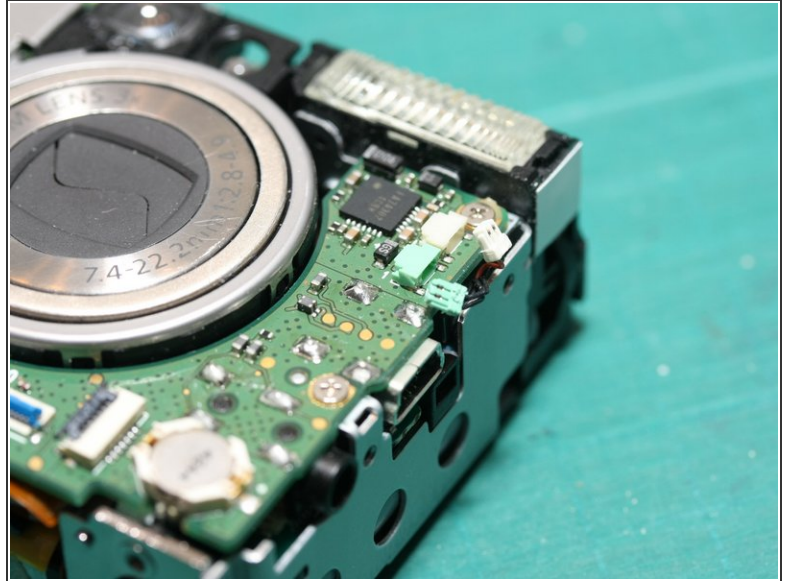
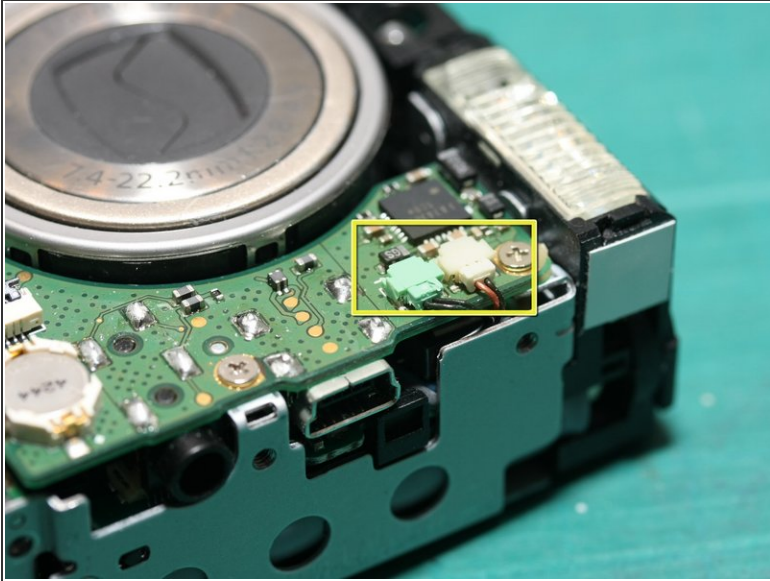
- Remove the 2 screws holding the LCD display module (already removed from the rest of the camera in this photo)
- It's not visible in this particular photo, but the LCD display module is made by Sony - part number "AM313EKA"
- The LCD is a 1.8" active matrix TFT LCD

Step 13



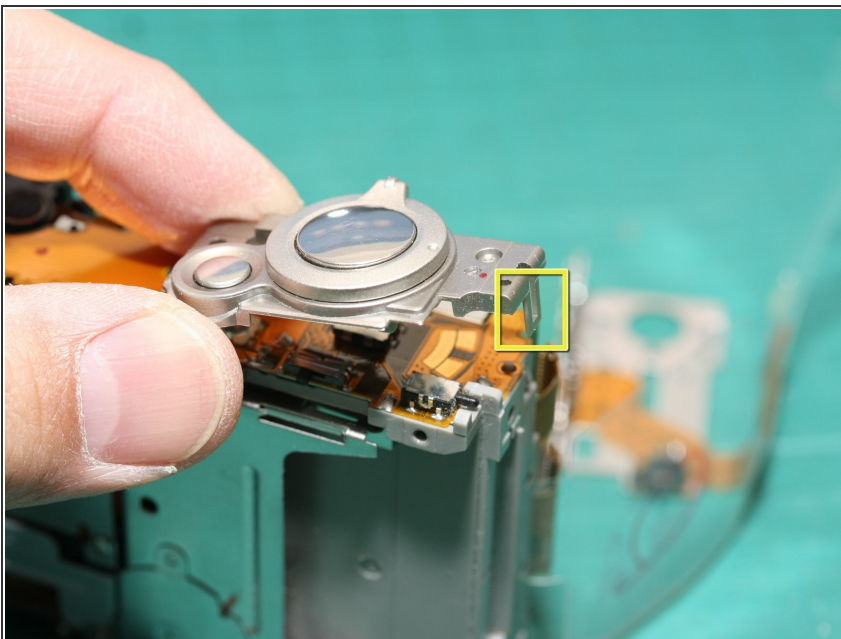
- There are 3 more ribbon cable connectors on the front of the camera. Gently flip up the black latches at each connector...
- ... and then the ribbon cables can be detached.

Step 14



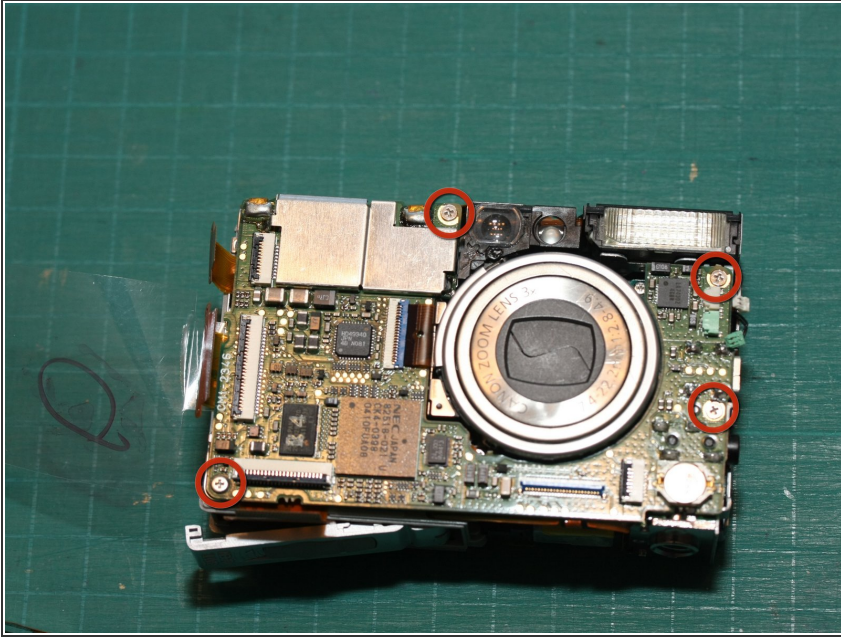
- Near the flash, there are 2 connectors...
- Gently pull the connectors out of their sockets.

Step 15



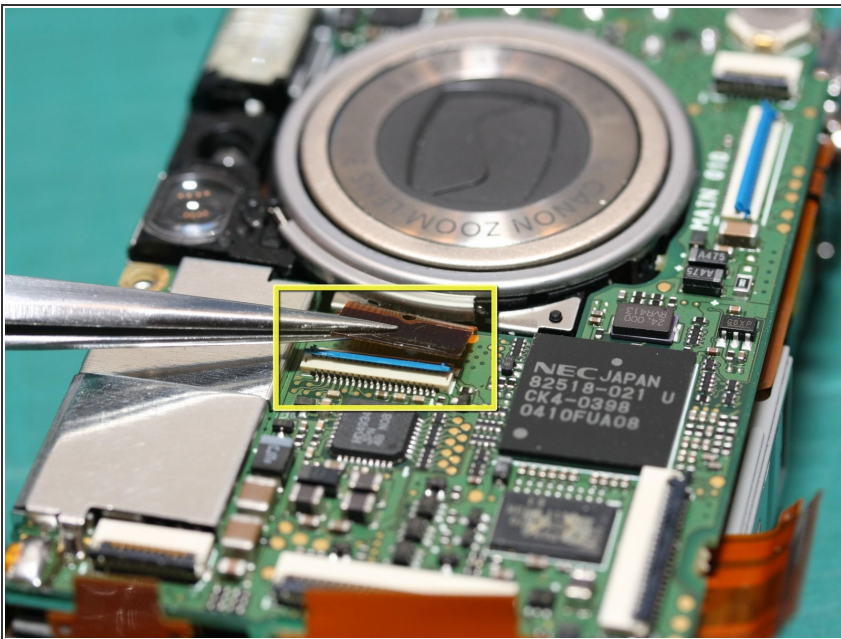
- The shutter button can be removed by simply releasing the 2 small catches (one outlined with a yellow square, the other hidden by my thumb)

Step 16



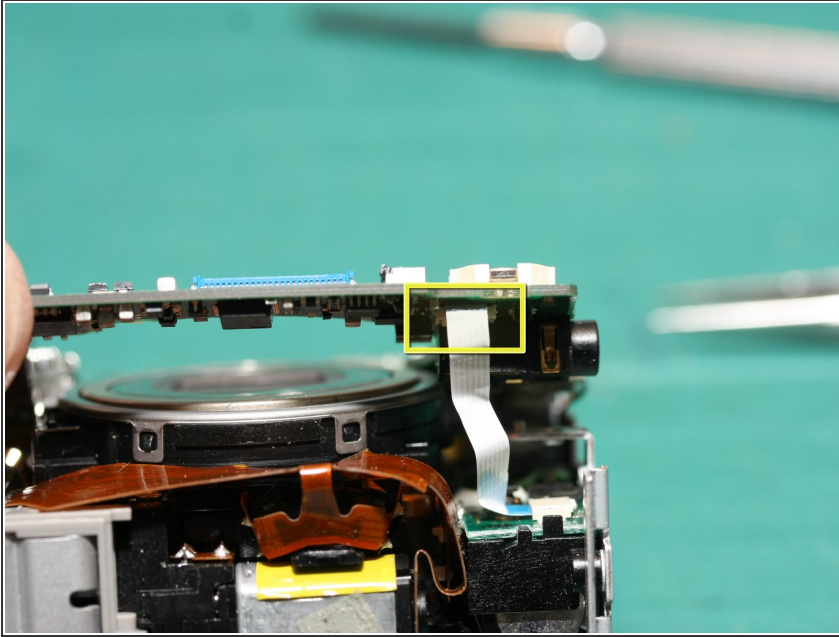
- Remove the 4 screws holding the main logic board to the rest of the camera.

Step 17



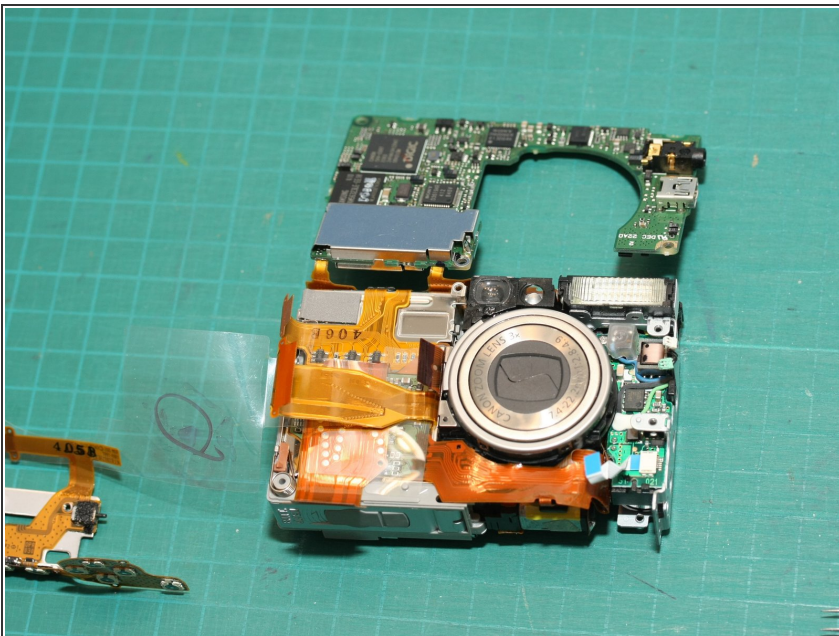
- Before you can remove the logic board, there's another ribbon cable to detach...
- ... gently flip up the blue catch on the socket then slip the ribbon cable out of the socket.

Step 18



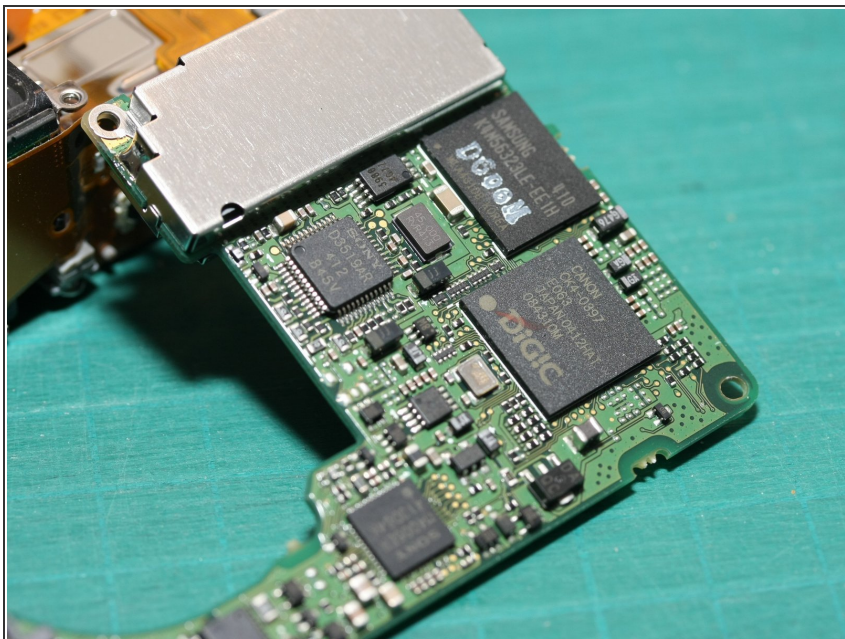
- Gently lift the bottom edge of the PCB, and you'll see one more narrow white ribbon cable attached to the bottom side.
- Gently pull the ribbon cable out of the socket (there's no latch on this connector)

Step 19



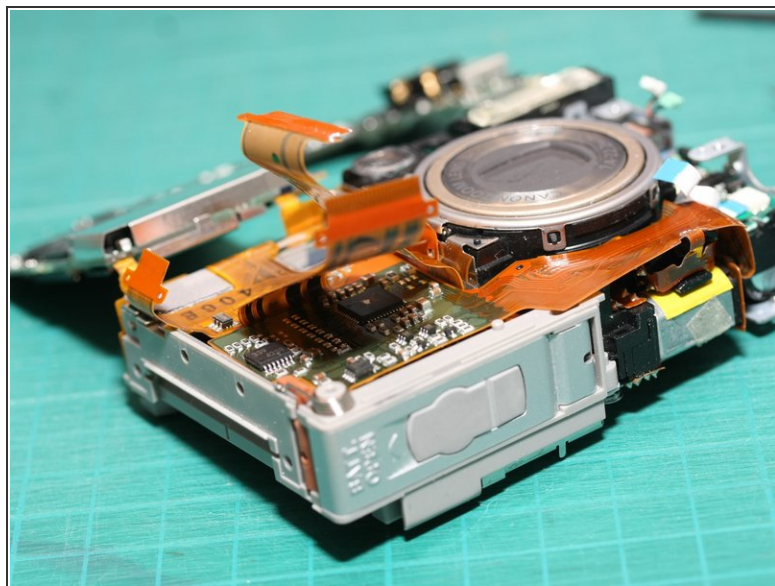
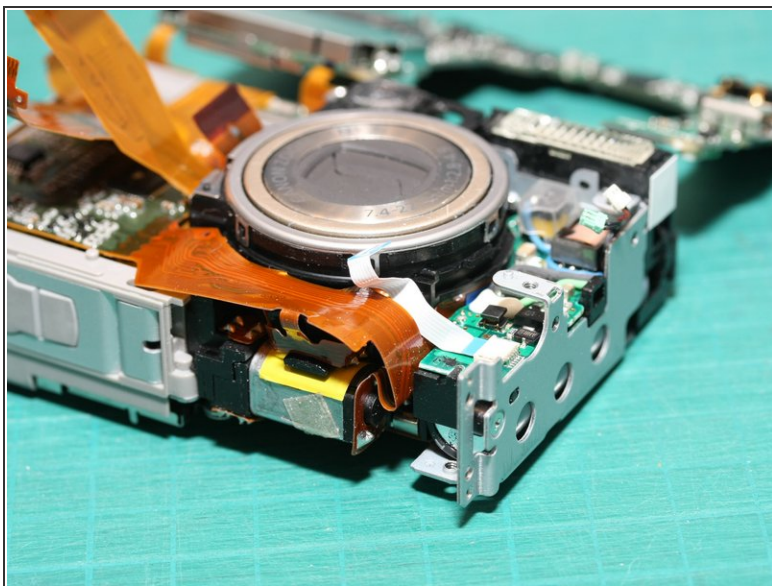
- Here's the PCB flipped up and away from the camera chassis.
- ⚠ Note: there are 2 flex circuit paths connecting the circuit board to the chassis - they are soldered and can't be detached without re-soldering. Be careful not to bend the flex circuit too severely or it may break. I had to resolder one of the connections after I was done.

Step 20



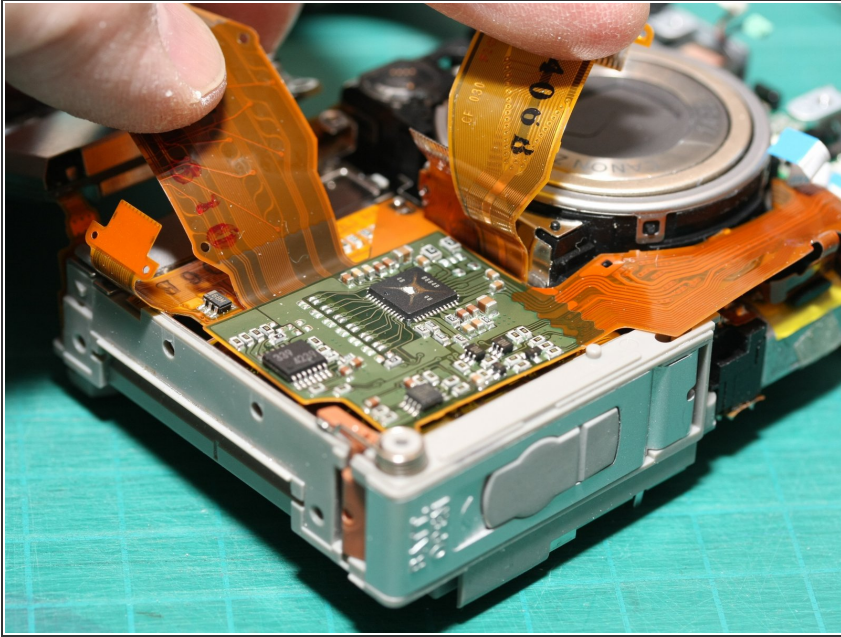
- Here's the back of the main logic board. Note the DIGIC chip (main camera processor chip)

Step 21



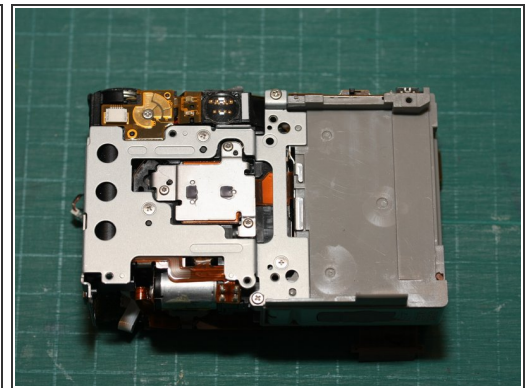
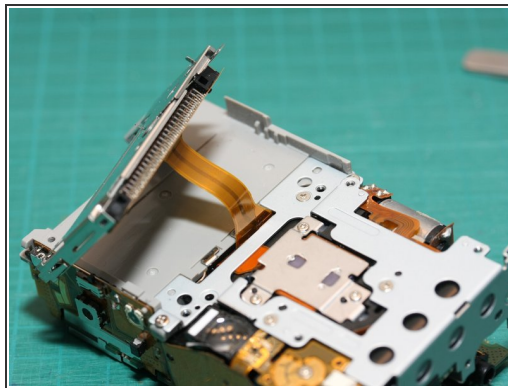
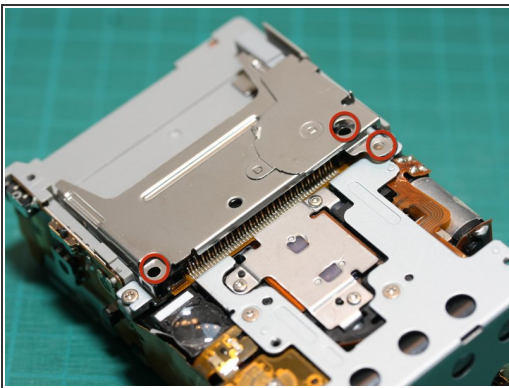
- With the main logic board swung aside, the target of our repair is nearly visible! - the lens module...
- The 2nd photo shows another view with the logic board out of the way. The clear plastic insulating sheet holding the lower metal plate is fastened under here and can now be removed

Step 22



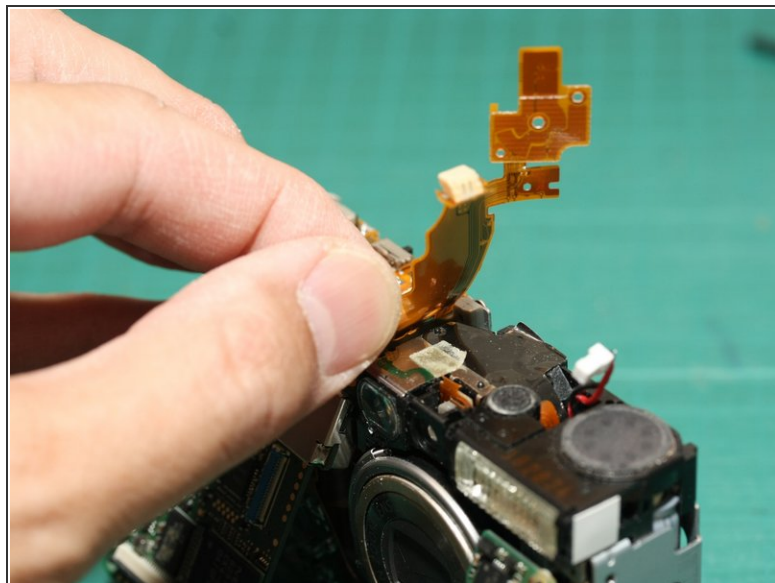
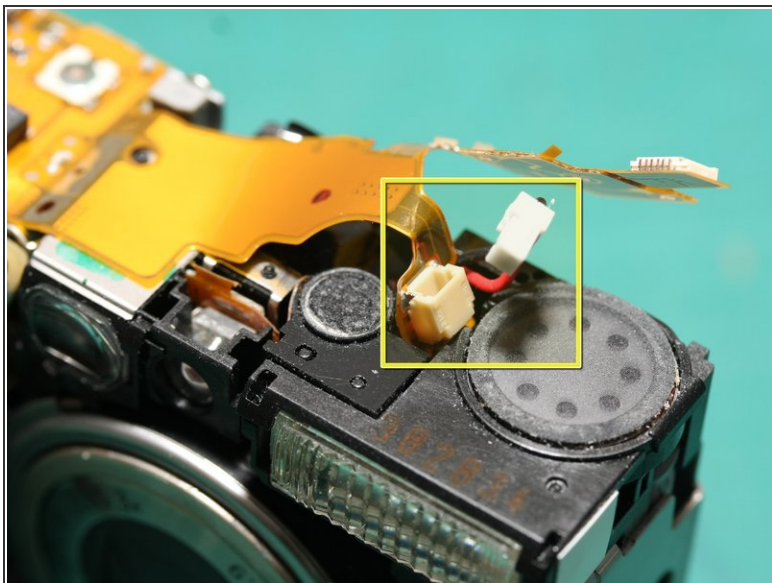
- Under the ribbon cables there's another small circuit board. This one is connected to the lens module and appears to contain various motor control chips.

Step 23



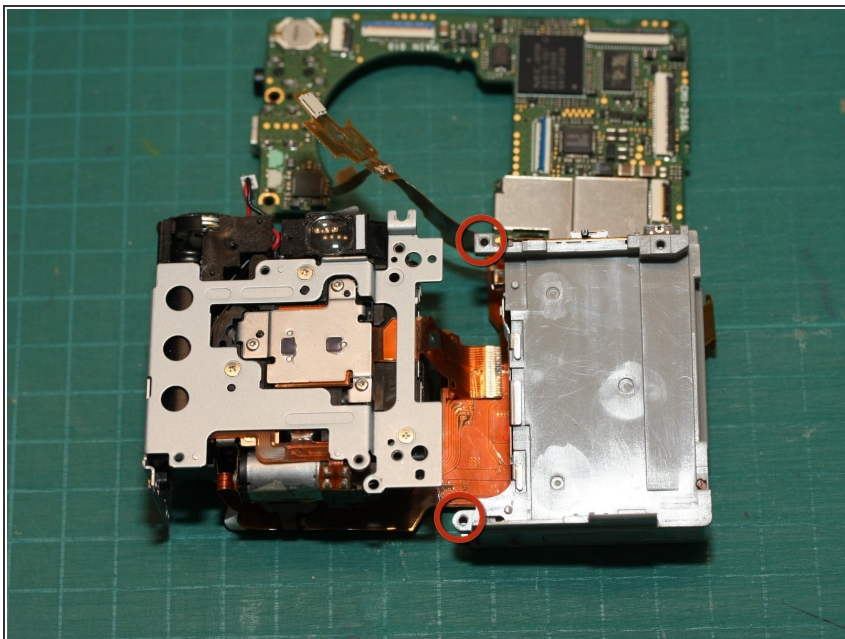
- Remove the 3 screws holding the CF card slot.
- Lift up the CF card slot - in the 2nd photo you'll see a ribbon cable going through the slot to the front of the camera. We earlier disconnected this ribbon cable from its socket on the front of the main PCB.
- Simply pull the ribbon cable out, but be sure to note the slot it goes through for later reassembly.
- The 3rd photo shows the rear of the camera with the CF card slot removed.

Step 24



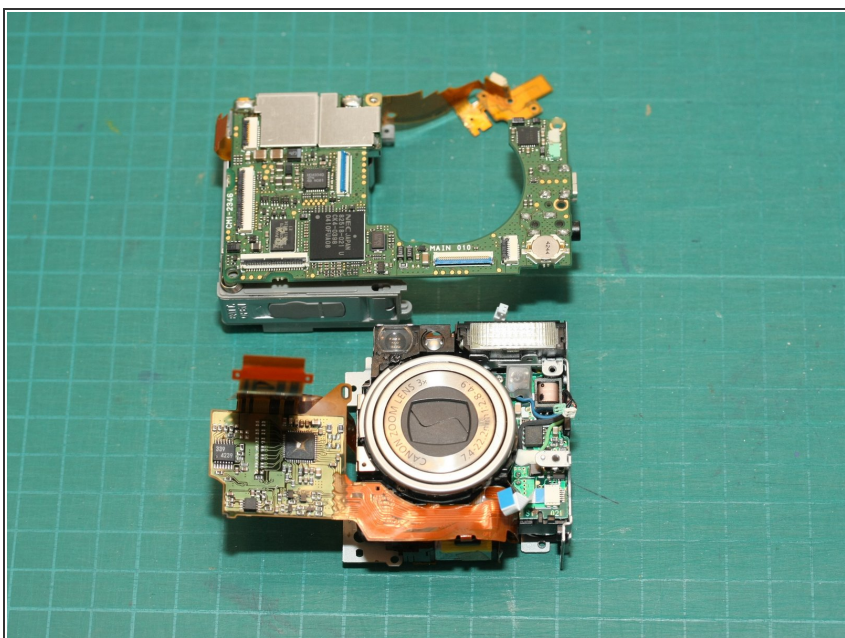
- Back on the top of the camera, gently pull the white connector with red/black wires out of the socket.
- Now gently pull up the flex circuit and the socket away from the camera top
- The 2nd photo shows the flex circuit and socket from the last step lifted away from the camera. This will now allow us to separate the plastic chassis of the camera from the lens module assembly in following steps...

Step 25



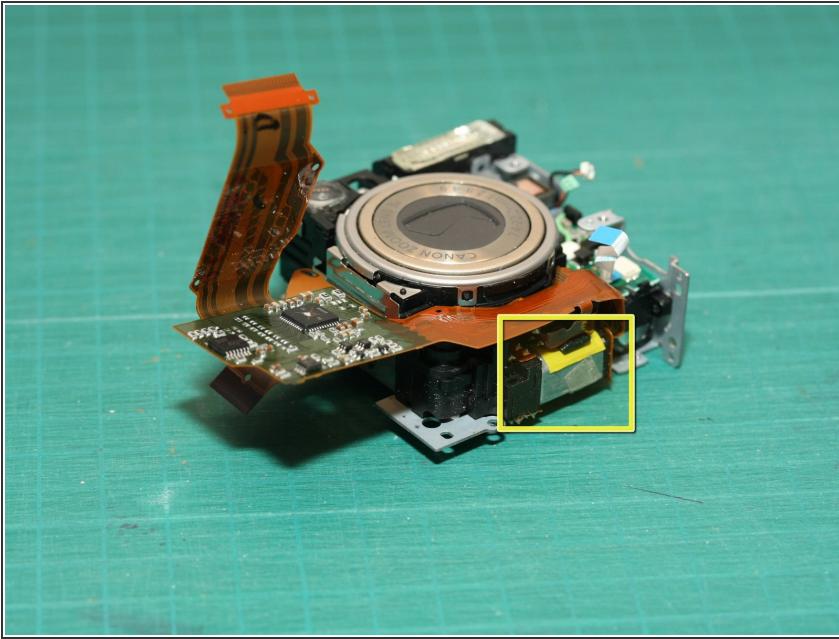
- Remove the 2 screws (shown already removed - marked with red circles)
- Now you can separate the plastic chassis on the right (battery compartment) from the lens module/flash/viewfinder assembly on the left.

Step 26



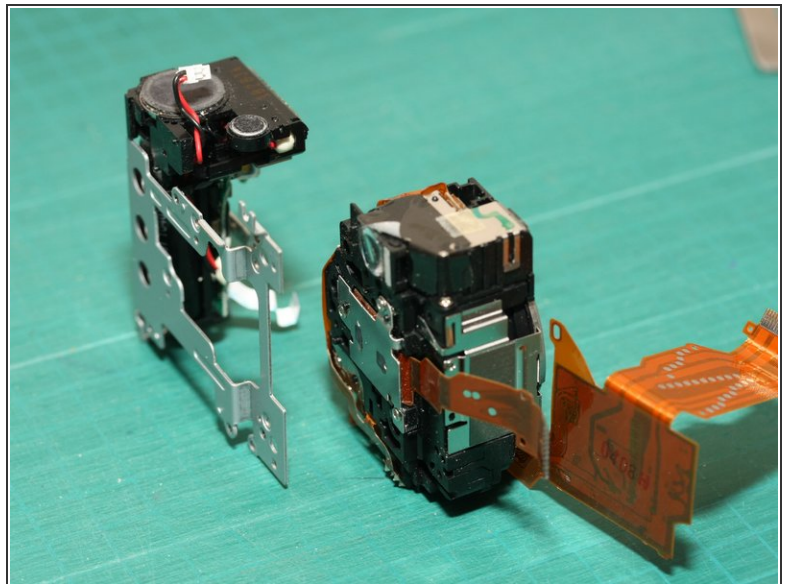
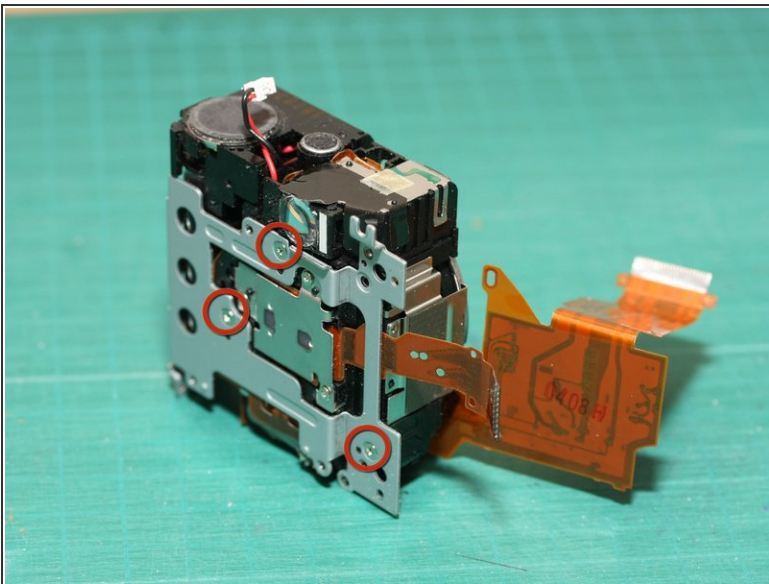
- Here's a view of the lens module/viewfinder/flash assembly (bottom) separated from main logic board/battery compartment (top)

Step 27



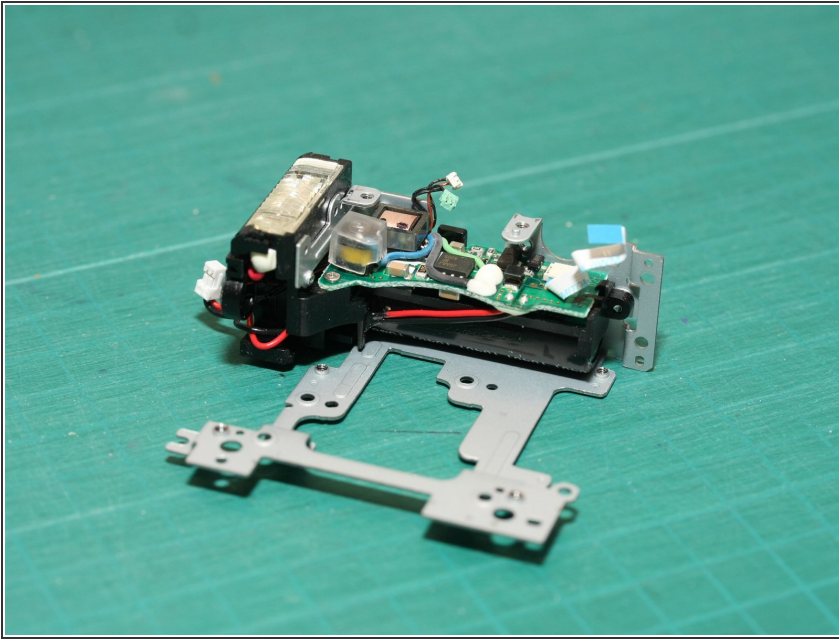
- At the bottom of the lens module assembly is the larger of 2 motors (yellow square) - this is the motor that extends/retracts the lens.
- We now want to get to the geartrain driven by this motor to see what's causing the problem.

Step 28



- Remove the 3 screws shown here.
- 2nd photo: After removing the screws, you can separate the electronic flash module (left) from the lens module (right)

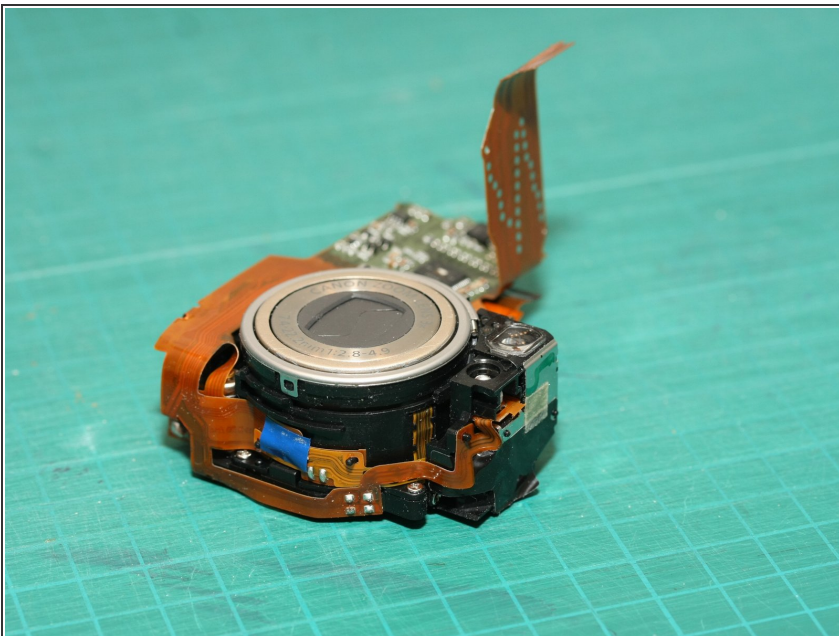
Step 29



- Here is the electronic flash module.

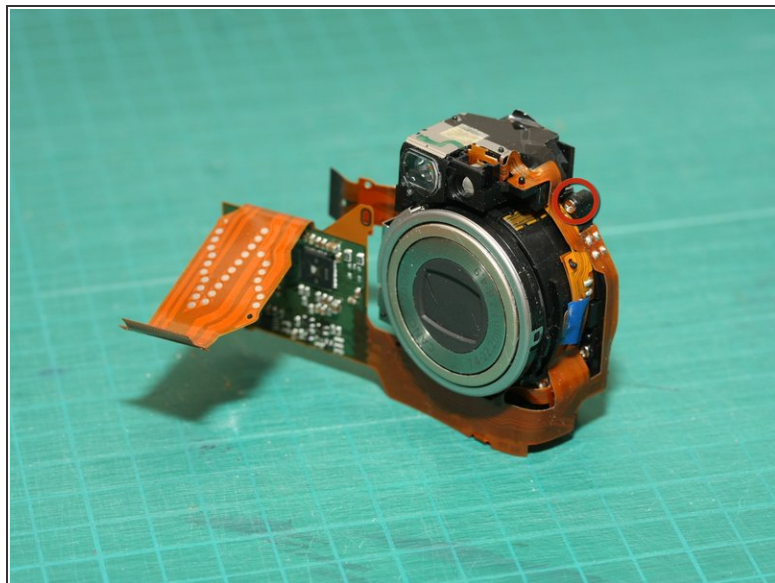
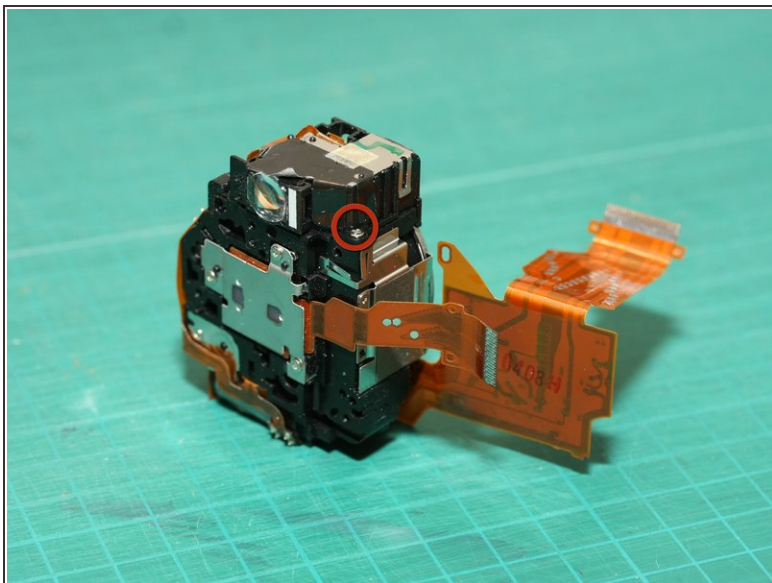
⚠ ****WARNING**** there are very high voltage circuits involved in driving the flash. The capacitor (big black cylindrical item under the small circuit board) holds a large charge and could cause an electric shock - handle with care. Fortunately all the circuits here seem well insulated and there are no exposed high voltage contacts.

Step 30



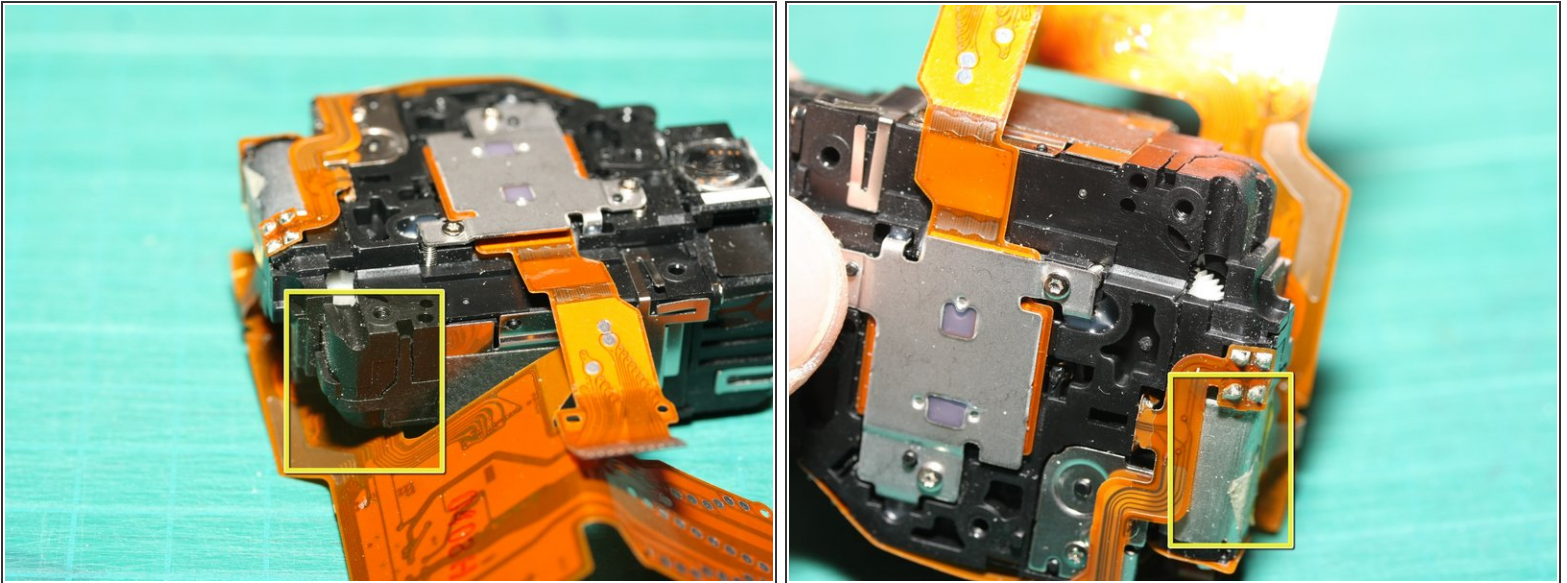
- Here's a view of the lens module after removing the flash module. That's the optical viewfinder towards the right of the unit.

Step 31



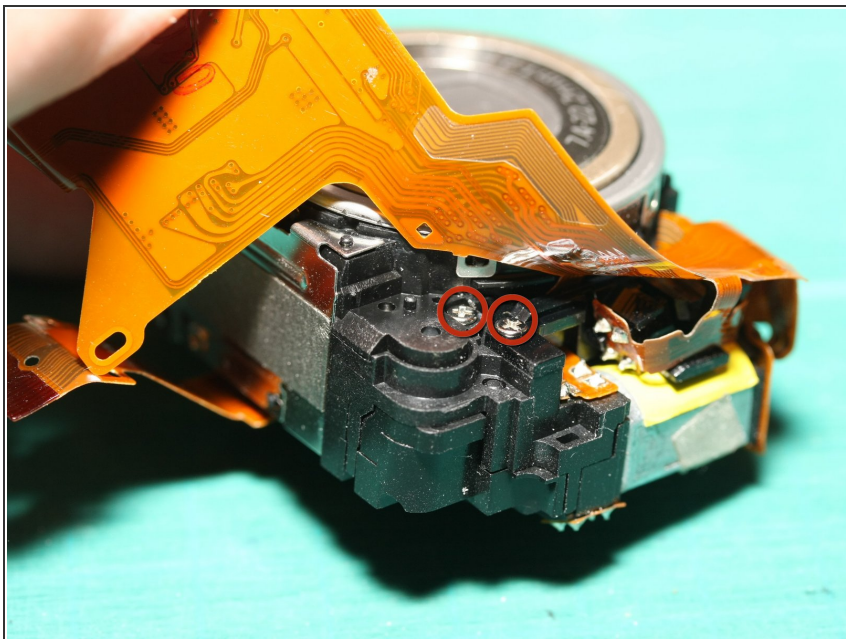
- Remove the first of three screws fastening the optical viewfinder to the rest of the lens module...
- ... then remove the second screw (2nd photo).
- The optical viewfinder can be separated from the lens module - however it's still joined by a flat flex circuit - be careful not to damage this flex circuit; just leave the viewfinder dangling to the side.

Step 32



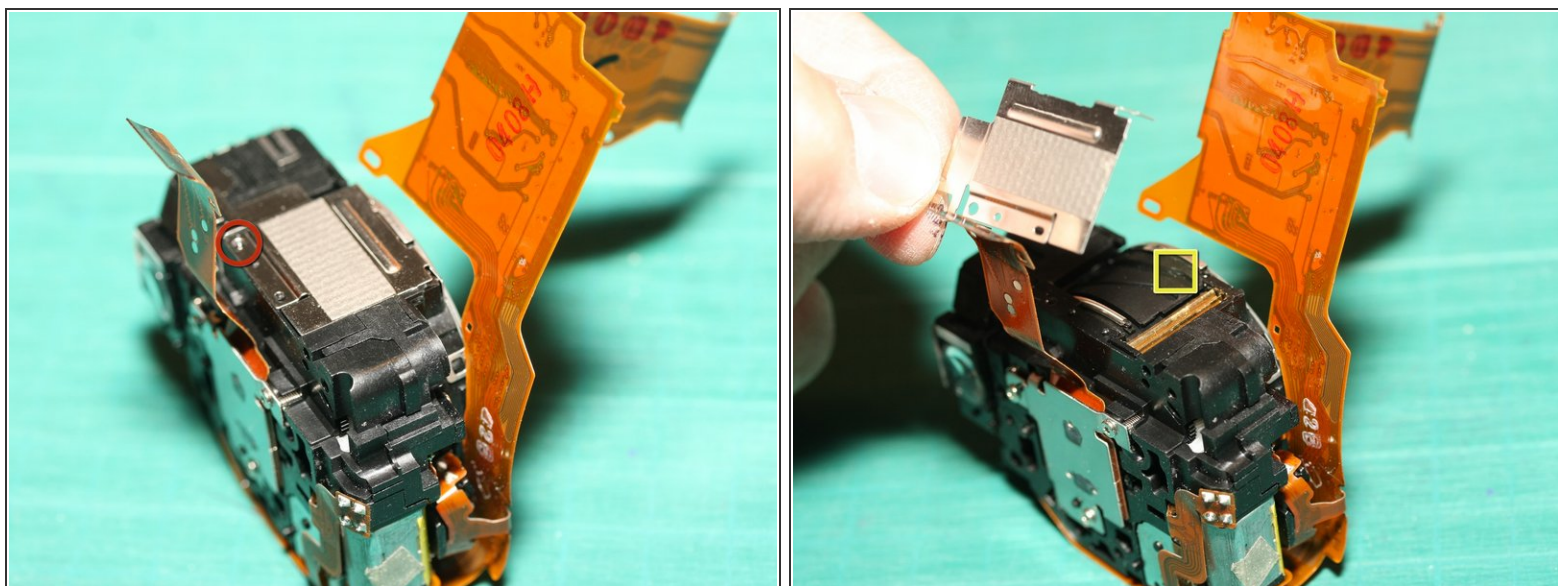
- The geartrain for the lens retraction motor is inside this corner of the lens module.
- (Note in this photo, the optical viewfinder is still attached to the right)
- In the 2nd photo, viewed from another angle there's a hint of the lens retraction geartrain - the small white gear visible through a hole in the back. The lens retraction motor is highlighted with the yellow rectangle in the 2nd photo.

Step 33



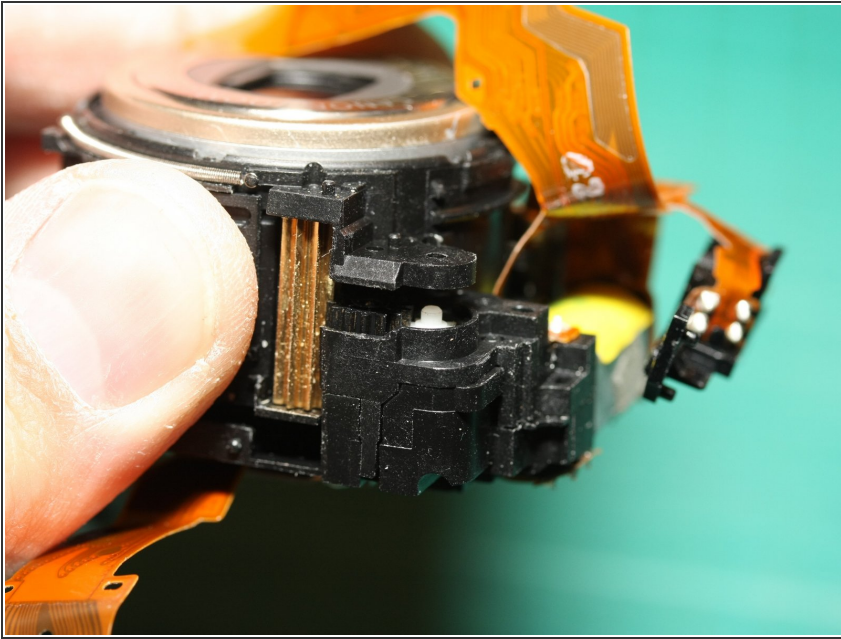
- These 2 screws need to be removed before separating the lens module front and back halves.

Step 34



- Removing this small screw circled in red will free the small metal plate on this side of the lens module assembly.
- In the 2nd photo the small plate is being removed.
- You can now see the main large brass gear which drives the lens unit in and out, and also a slider/cam that zooms the optical viewfinder (yellow square)

Step 35

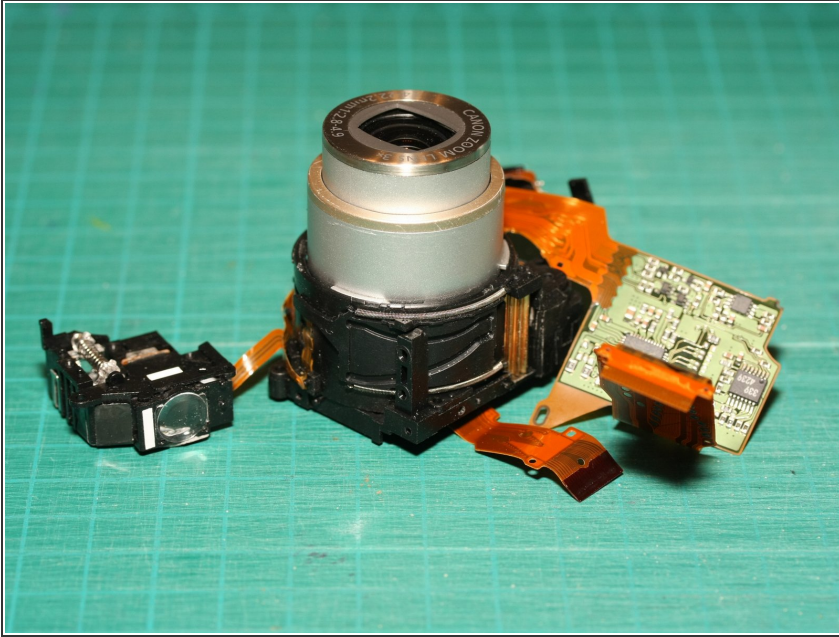


- By gently pulling apart the front and back halves of the lens module assembly, we expose a black gear and white gear connecting the larger brass gear to the motor
- Using tweezers it's possible to remove the black gear without fully opening the lens module halves - just open wide enough like shown here to gain access.

⚠ Note: the flex circuits around the lens module are soldered and cannot be removed. Therefore you need to gently carefully move them aside when pulling apart the lens module.

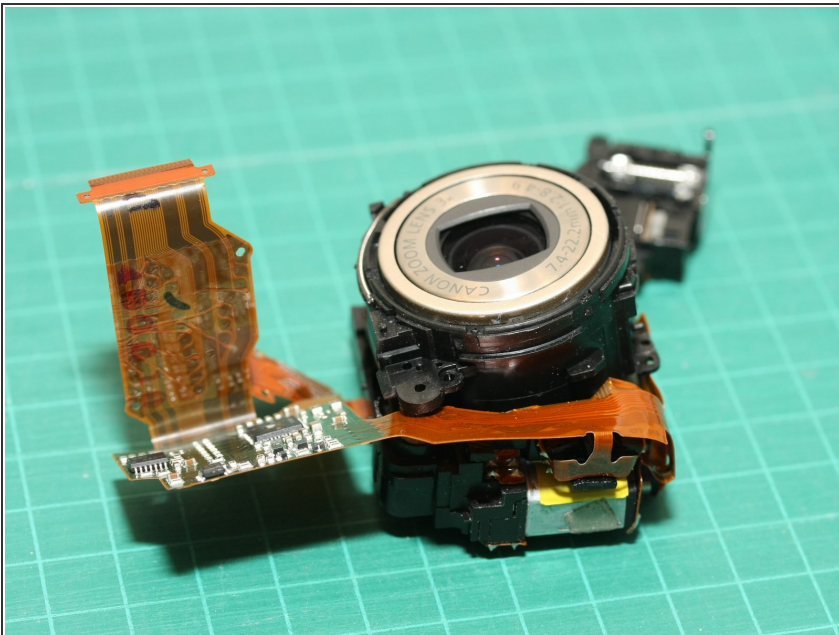
⚠ On the right side of the photo, there's a small plastic piece with flex circuit attached. This piece is held by one of the screws and the front/back halves of the lens module. When reassembling it's a bit fiddly to get back in the right place if you're not paying attention.

Step 36



- Success!! by removing the small black gear in the previous photos, I was able to manually spin the big brass gear to extend & retract the lens.
- Upon closer inspection I found some sand or grit in the black gear - it must have been jamming the geartrain, causing the E18 error.
- With the gears cleaned, I could reassemble and test the camera. No more E18 error - the lens extended and retracted again normally.

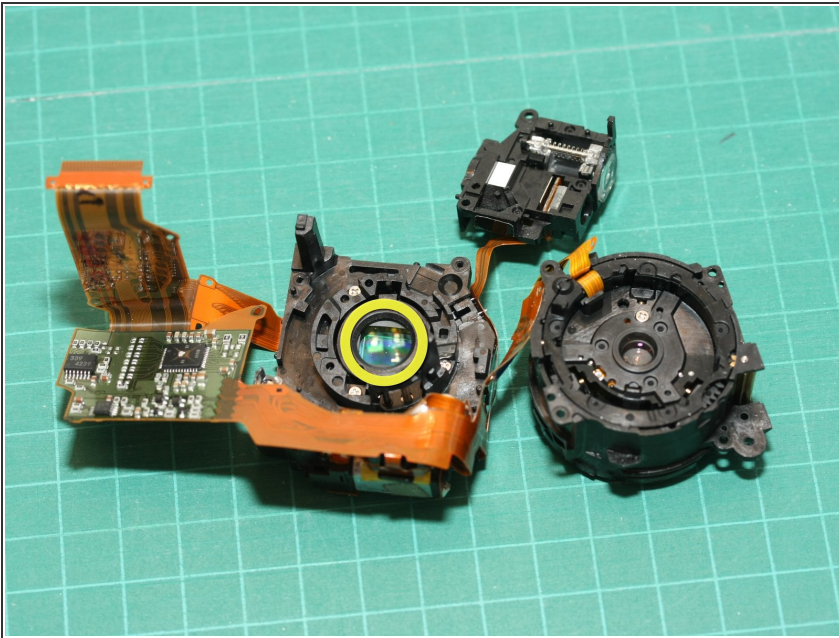
Step 37



- Wait!... not so fast. After reassembling the camera, I found a huge piece of dust on the sensor in all the new images I took. Dust must have entered the lens module during disassembly. I had to take the camera apart completely again! This time, to open up and clean the lens module. :-(

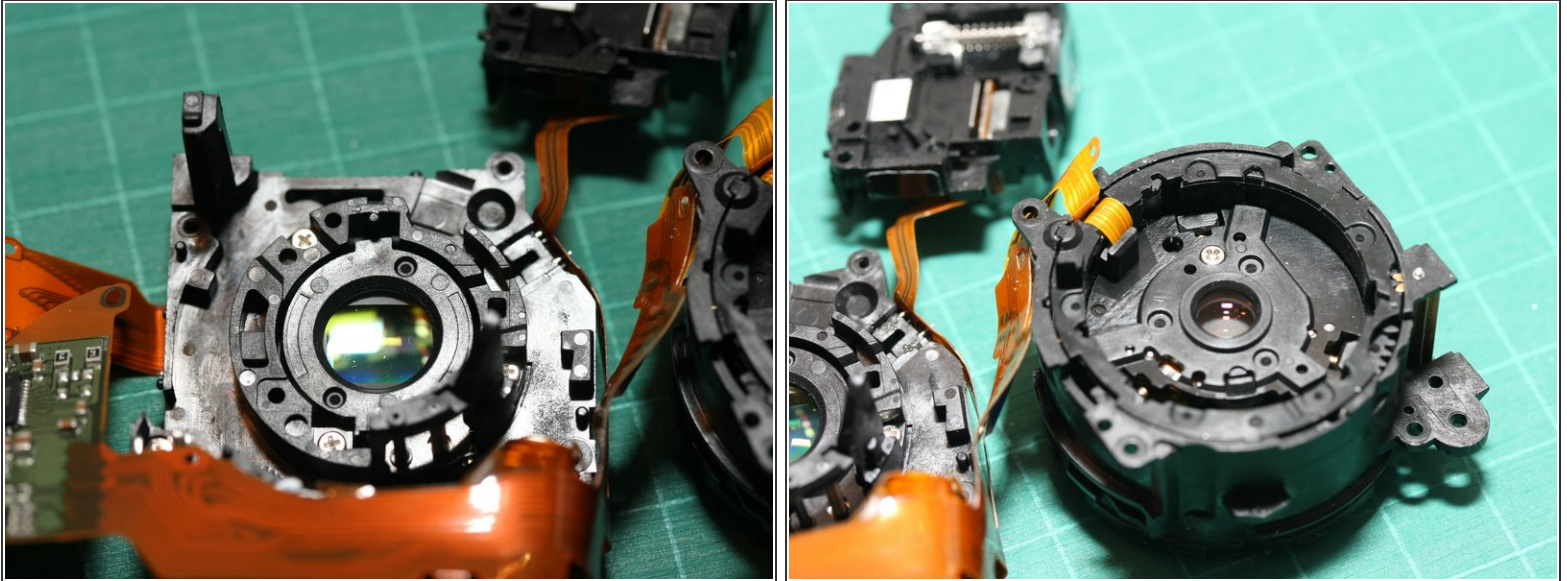
- So here is the lens module again, with the 2 halves pulled slightly apart to clean the sensor and/or inner lens elements. It was easier to disassemble the camera the 2nd time :-)

Step 38



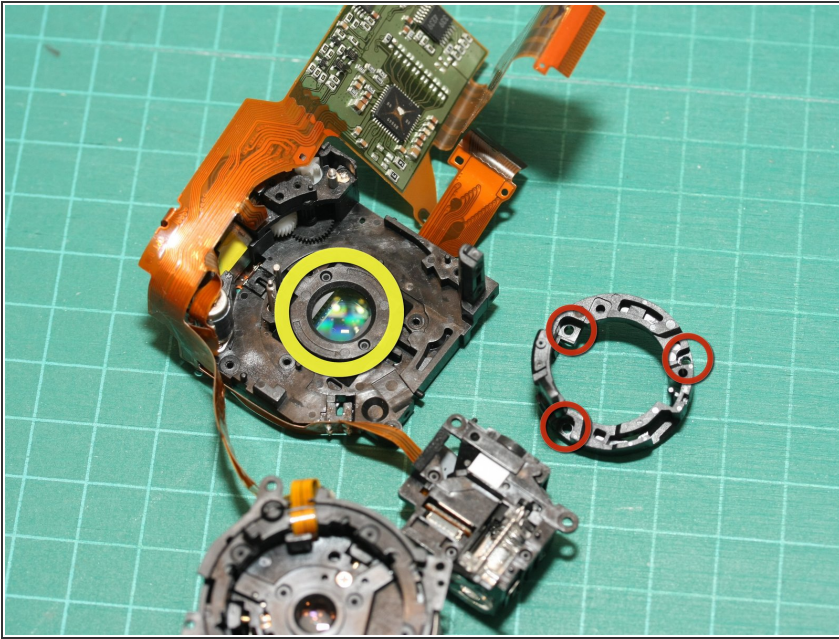
- Here are the lens module with front and back halves separated. The sensor is under the rear lens element (yellow circle)
- The optical viewfinder (top) and the front of the lens module (right) are also visible here.

Step 39



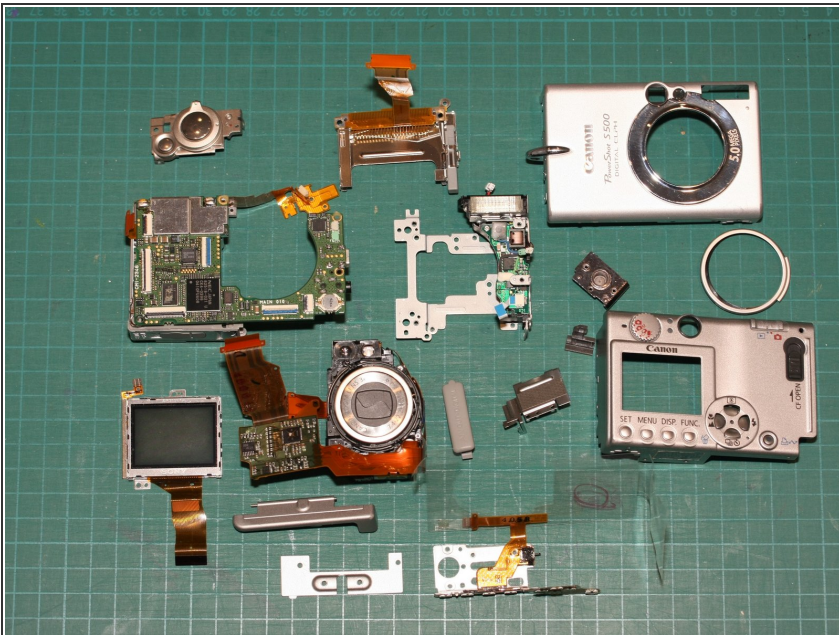
- In the rear half of the lens module, you can see some of the dust on the other side of the rear lens element in this photo. The sensor itself was clean.
- This rear element is spring mounted and can be driven forward/back for focus by a second smaller motor.
- The 2nd photo shows another view of the front half of the lens module.

Step 40



- Three screws (red circles, shown here already removed) hold the ring surrounding the rear lens element.
- With the ring removed, you can gently lift up the spring mounted rear element (yellow circle) with tweezers. I was then able to clean out the offending dust on the back of the element.
- Time to reassemble everything (again!) - this time, everything worked fine AND no more dust spots in the images. Success!

Step 41



- Here are all the components of my disassembled Canon PowerShot S500, excluding the battery and screws.
- Reassembling the camera involves following the previous steps in reverse order.

To reassemble your device, follow these instructions in reverse order.