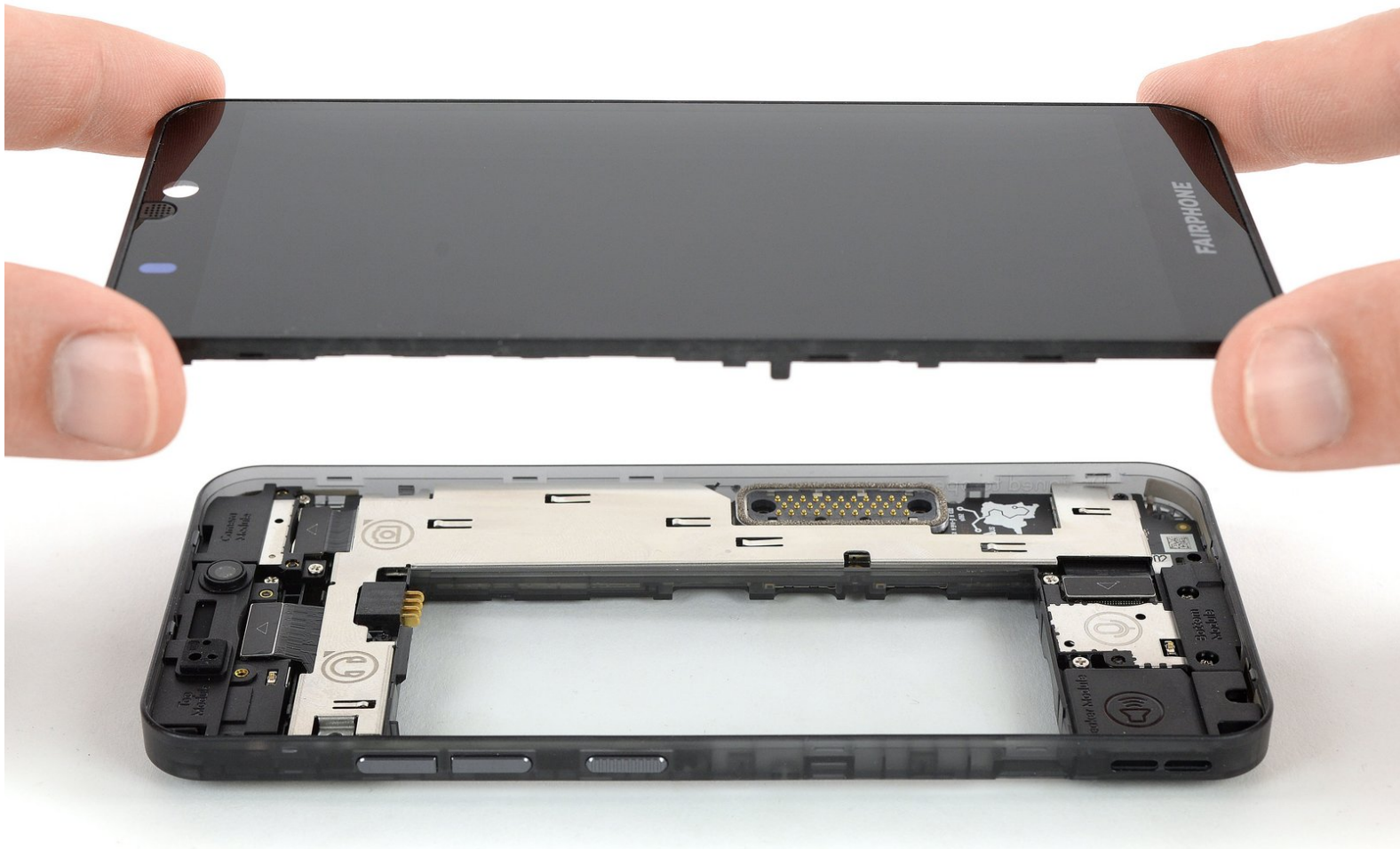




Fairphone 3 Display Module Replacement

This guide shows how to remove or replace a broken or defective display module of the Fairphone 3.

Written By: Dominik Schnabelrauch



INTRODUCTION

Use this guide to remove or replace a broken or defective display module in your Fairphone 3.



TOOLS:

- [Phillips #00 Screwdriver](#) (1)
- [iFixit Opening Picks \(Set of 6\)](#) (1)



PARTS:

- [Fairphone 3 Display Module](#) (1)

Step 1 — Back Cover



 Power off your phone before beginning disassembly.

- Insert a thumbnail, or a prying tool like a spudger, into the notch at the bottom right of the back cover.
- Pry the back cover up to start separating its plastic clips.

Step 2



- Slide around the bottom right corner of the back cover to loosen the lower plastic clips.
 - Lift the back cover to release the rest of the plastic clips and remove it.
- ☒ To reinstall the back cover press it firmly into place until you hear a snap from the plastic clips to form a seamless connection with the rear side of the phone.

Step 3 — Battery



- Use a fingernail or a prying tool at the marked notch to lever the battery out of its recess.
- Lever the battery up until you can get a good grip.

Step 4



- Lift the battery out of its recess and remove it.

Step 5 — Display Assembly



- ⓘ Whenever a Phillips #00 screw is mentioned you can also unfasten it with a size #0 bit/screwdriver.
- Remove the thirteen Phillips #00 screws (4 mm length).

Step 6



⚠ Make sure to insert the opening pick between the midframe and the display module and not into the small gap next to the screen. Otherwise you're going to pry up the screen instead of the whole display module.

- Insert an opening pick between the midframe and the display module on the right edge of the phone.
- Slide the opening pick down to the bottom right corner to pry open the plastic clamps of the display module.

Step 7



- Slide the opening pick around the bottom right corner and use it to disengage the plastic clamps at the bottom of the display module.

Step 8



- Slide the opening pick along the left side to pry the display module up.
- ⓘ The display module should pop out of the midframe during this process. In case it doesn't, check for remaining clamps you might have missed.

Step 9



- Remove the display assembly.

- ☑ To reinstall the display-module press it into place on all sides until you can hear a snap from the plastic clamps to make sure it sits flush with the frame.

⚠ If you install a new display: The new display module comes with a white plastic cover held by 2 screws over the processor and the connectors. This needs to be taken off.

To reassemble your device, follow these instructions in reverse order.

Take your e-waste to an [R2 or e-Stewards certified recycler](#).