



# Replacement the WiFi card on Dell XPS 12 9Q23

Your WiFi card no longer works and you want to...

Written By: Schwarzer



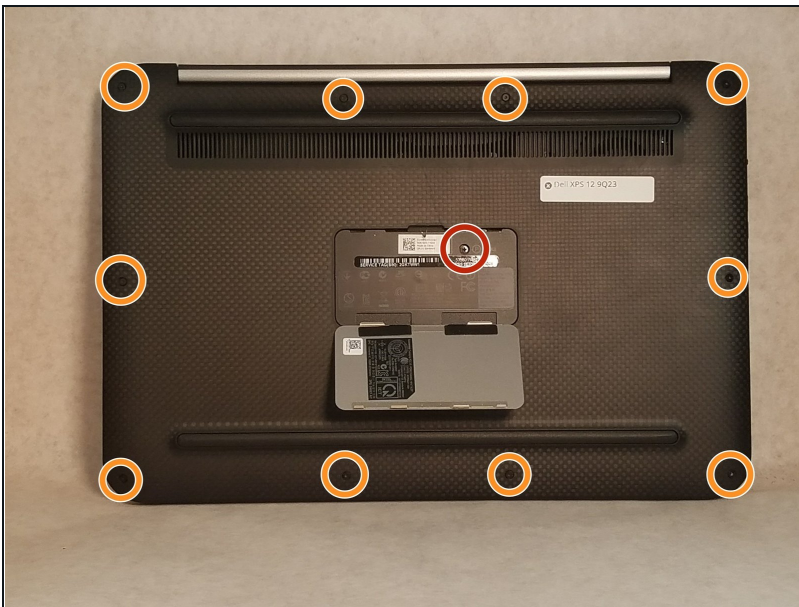
# INTRODUCTION

*Your WiFi card no longer works and you want to change it. You've come to the right place, this tutorial is for you.*

## TOOLS:

Mako Driver Kit - 64 Precision Bits (1)

### Step 1 — Battery



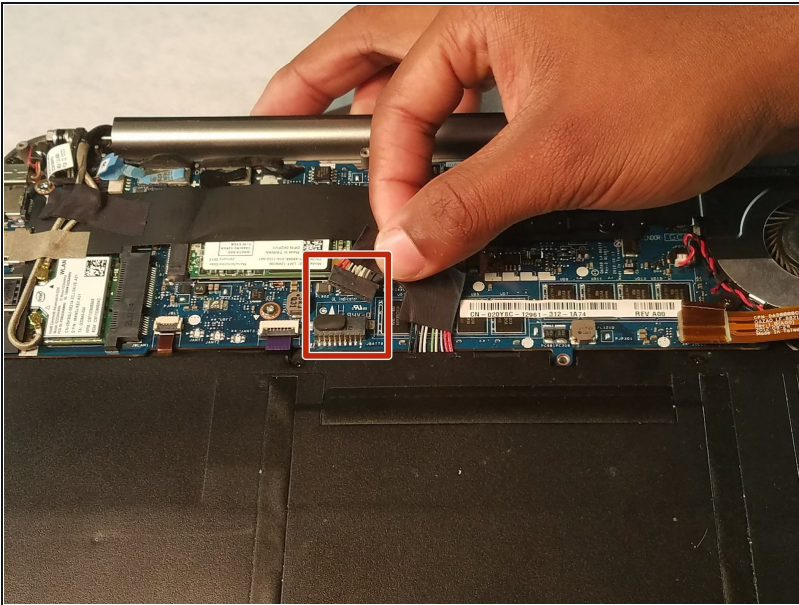
- Pop the center cover open on the bottom cover.
- Remove the center screw with a #00 Phillips screwdriver.
- Use a T5 Torx screwdriver for the remaining screws around the edge of the bottom cover.

## Step 2



- Carefully remove back panel after all screws have been removed.

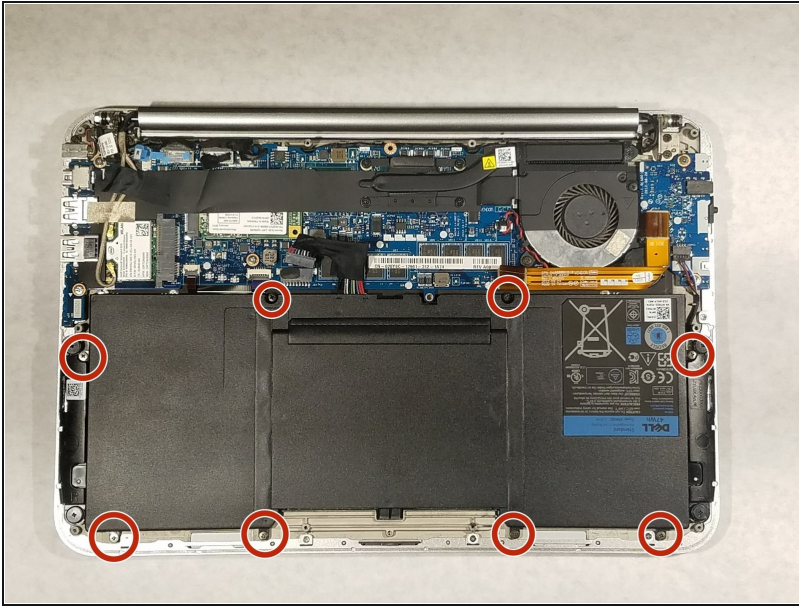
## Step 3



- After the back panel has been removed, disconnect the battery to prevent electrical shock

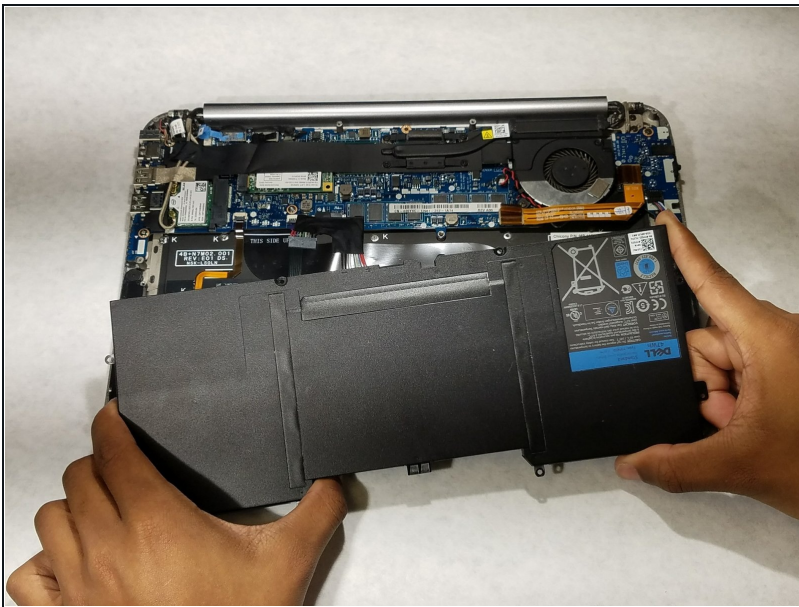


## Step 4



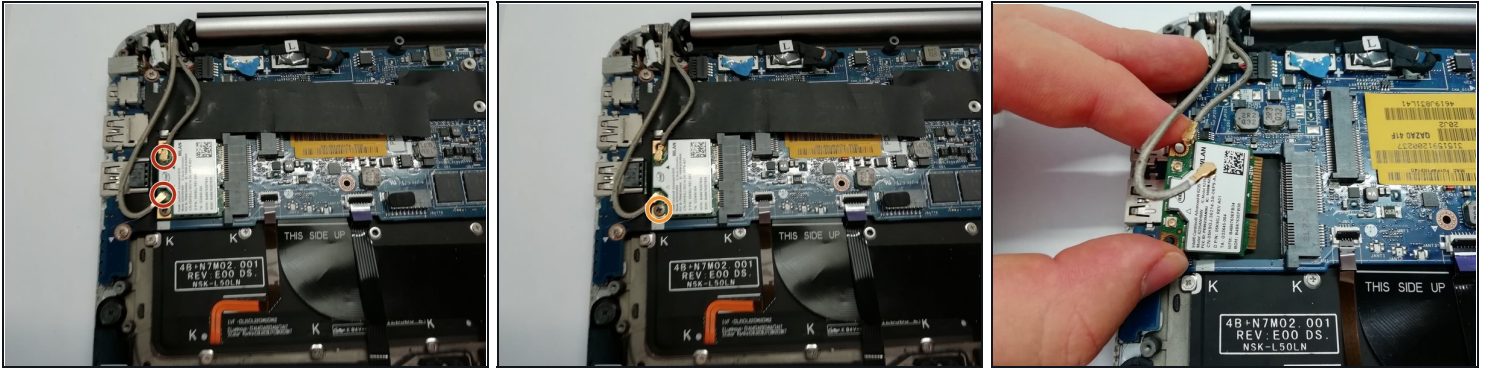
- Use a Phillips #00 screwdriver to remove the 8 screws that secure the battery.

## Step 5 — Remove the battery



- Once all the screws have been removed the battery is now safe to extract

## Step 6 — Remove the WiFi card



 We removed the battery to avoid electric shocks.

- Disconnect the two wires from the WiFi card. You can do this with a pair of pliers or your fingernail.
- Remove the screw with a #00 Phillips screwdriver.
- Now remove your WiFi card to replace it.

---

*To reassemble your device, follow the instructions in reverse order.*