



# Lenovo IdeaPad 330S NVMe Drive Replacement

You may find yourself in need of additional...

Written By: Ilia Tocheny



## INTRODUCTION

You may find yourself in need of additional fast storage to feed hungry computer applications such as graphics and video editing tools. If you would like to replace a faulty NVMe drive or one with insufficient capacity, follow this guide.

The battery for this device is not easily accessible and will require opening the device. Before you begin your replacement, be sure to disconnect the laptop from any power source. Additionally, we recommend that you turn off the device wait 5 minutes.

If you live in area rich of Static Electricity please advise using an ESD Strap.



### TOOLS:

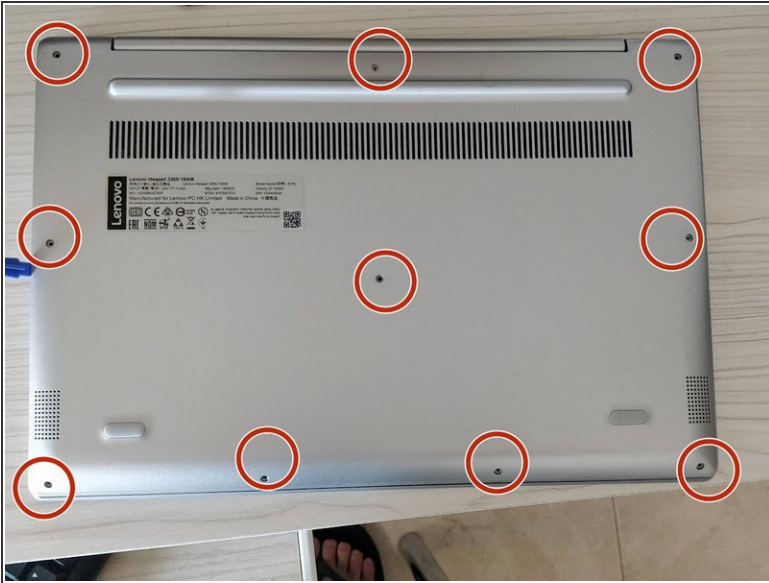
- [Phillips #00 Screwdriver](#) (1)
- [iFixit Opening Tool](#) (1)
- [Anti-Static Wrist Strap](#) (1)



### PARTS:

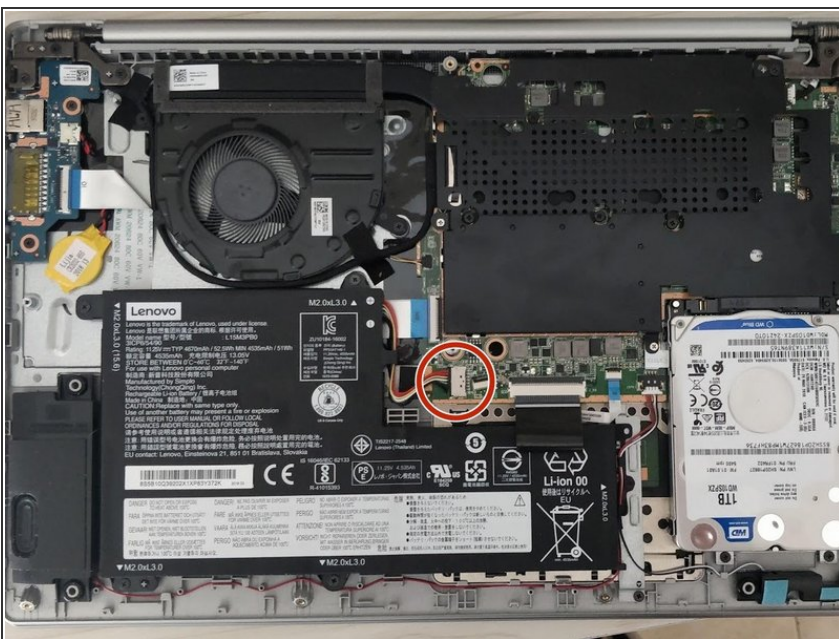
- [Crucial P3 NVMe PCIe M.2 2280SS SSD - solid performance, switching from HDD or SATA to NVMe™](#) (1)
- [Crucial P3 Plus NVMe PCIe M.2 2280SS SSD - fast Gen4 NVMe™ storage for data-intensive applications](#) (1)
- [Crucial P5 Plus NVMe PCIe M.2 2280SS SSD - professionals, creatives, and hardcore gamers](#) (1)

## Step 1 — NVMe Drive/Sata SSD



- Turn off the device before working on it.
- Remove the 10 screws as shown in the picture
- Gently using the tool pry off the bottom case

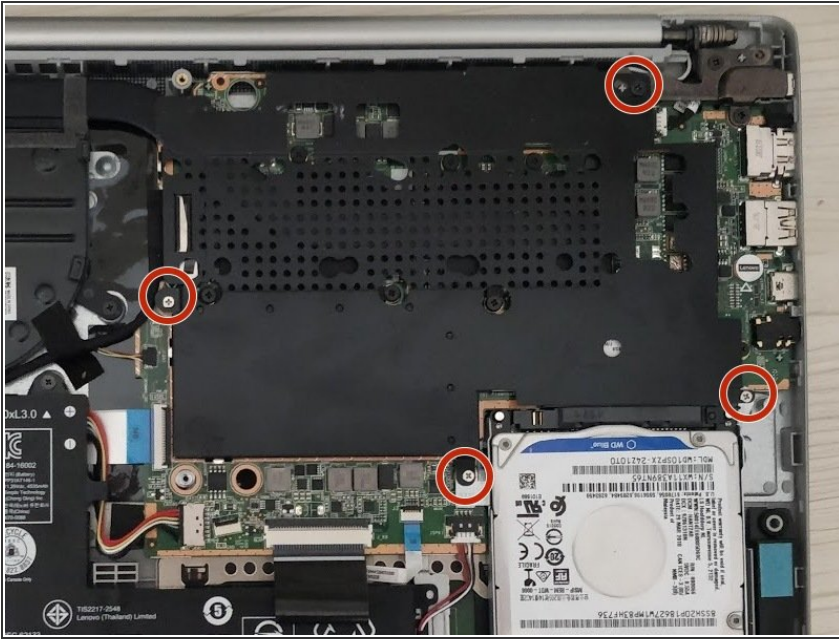
## Step 2 — Disconnecting Battery



- Using a spudger gently push the plastic connector to the left in order to disconnect the battery.

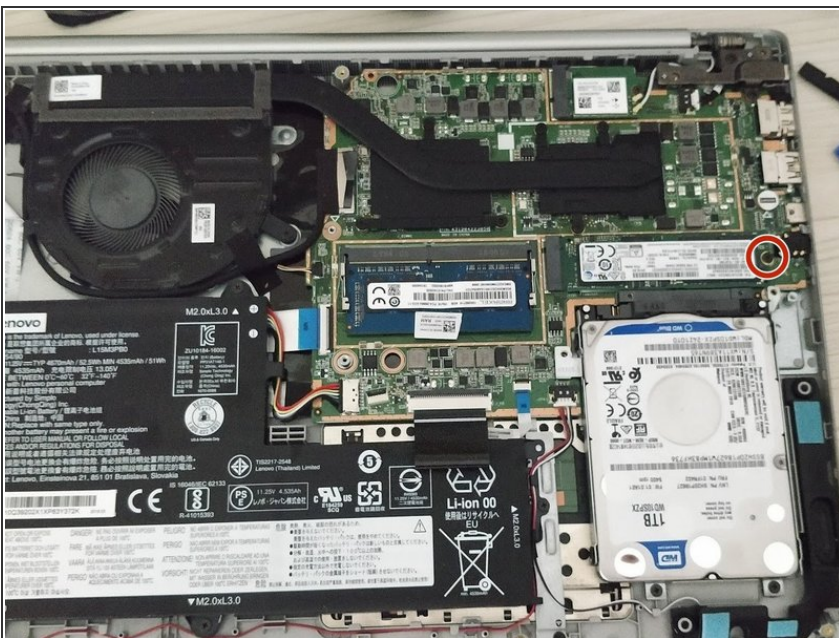


## Step 3



- Remove the 4 screws according this picture
- Gently pry out the black case.

## Step 4



- Remove the Screw as shown in picture
- The drive will lift, remove gently the drive.
- Install the new drive and screw it to the motherboard

To reassemble your device, follow these instructions in reverse order.