



# Xbox One Disc Drive PCB Replacement

Hi Guys, In this guide I'll explain how to...

Written By: koppie007



# INTRODUCTION

Hi Guys,

In this guide I'll explain how to replace the Blu-ray drive it's PCB. This is required when you swap your motherboard.

---

## 🔧 TOOLS:

[Soldering Workstation](#) (1)  
[Tweezers](#) (1)  
[Lead-Free Solder](#) (1)  
[Phillips #1 Screwdriver](#) (1)

## ⚙️ PARTS:

[Xbox One Motherboard and Paired Optical Drive](#) (1)

---

## Step 1 — Remove the tape



- First of all, remove the sticker/tape from the back of the drive to reveal the 2 other screws. You can do this with your fingers, it could take a little force, but not too much.

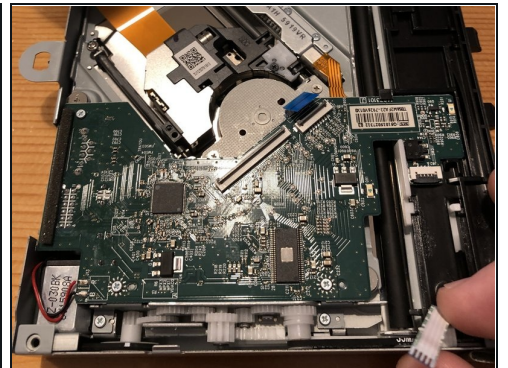
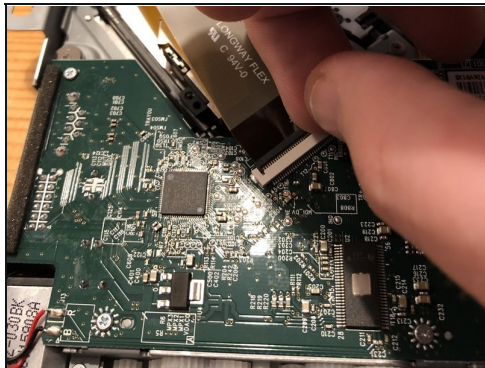
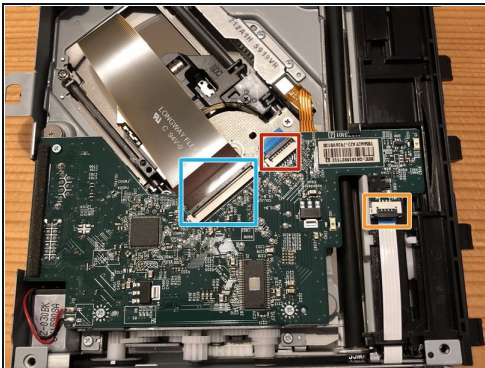


## Step 2 — Remove the screws and back cover



- Remove the 4 PH1 screws.
- Lift up the back cover and remove it. It should not take any force and should come off easily. I lifted it up at the left side.

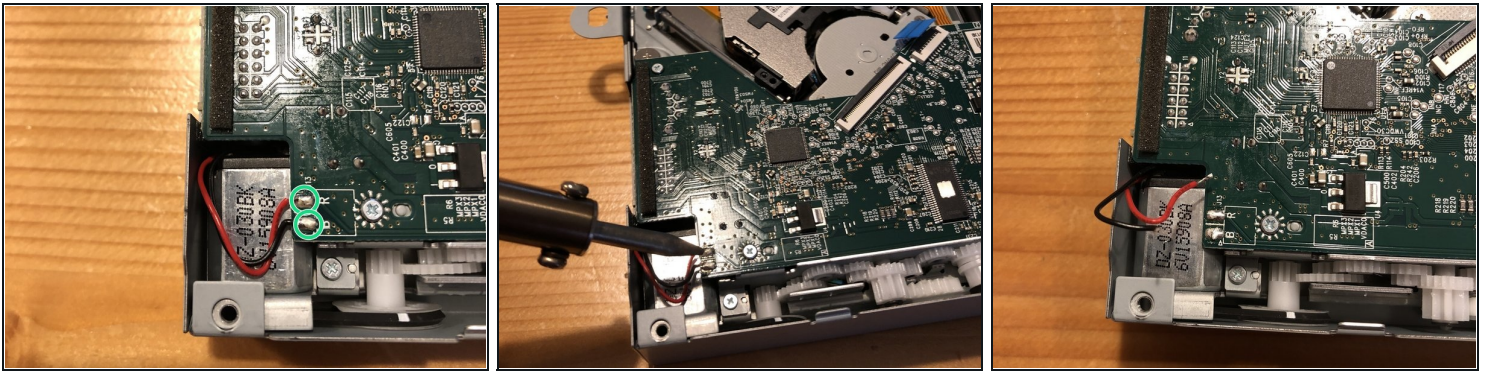
## Step 3 — Remove the ribbon cables



**⚠ Do NOT remove the ribbon cables yet, make sure you opened up the ZIF connector first and then remove the ribbon cables. Otherwise you could damage the PCB.**

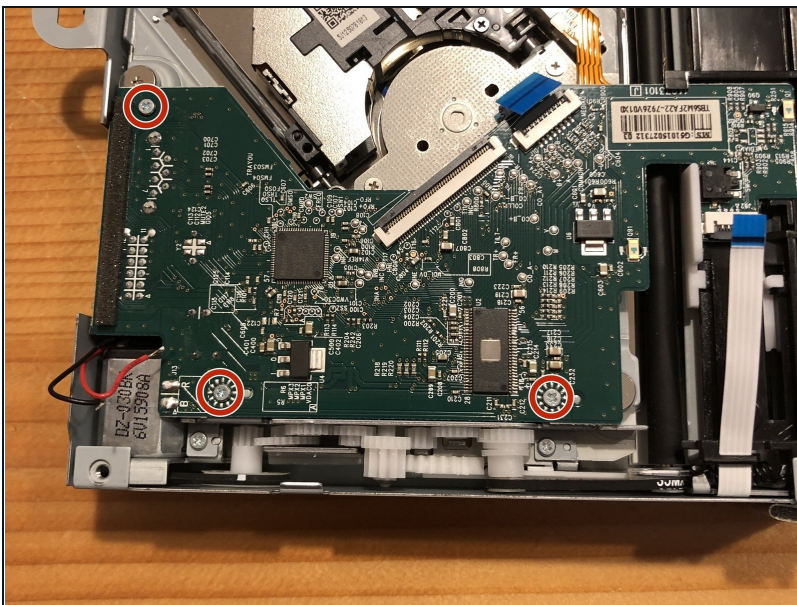
- Open up all the 3 ZIF connectors with your finger nails or with an plastic opening tool carefully.
- Then remove the 3 ribbon cables from their sockets.

## Step 4 — Desolder the cables



- You will see an red and an black cable soldered to the PCB.
- Now get your solder iron ready to desolder the 2 cables. Heat and melt the solder, with your other hand hold the tweezer. When the solder is melting, remove the cable with your tweezer to get the cable out.
- ① It's recommended you use desoldering wick, so you can put some fresh new solder on the pads. Recommended but not required.
- Now it should look like the last photo.

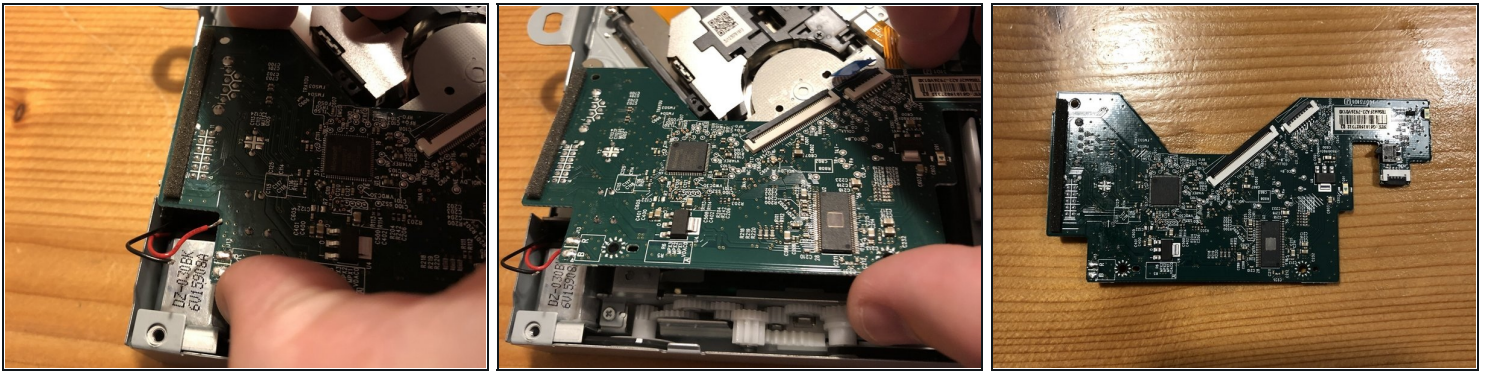
## Step 5 — Remove the screws



- Remove the tiny 3 PH1 screws from the PCB.

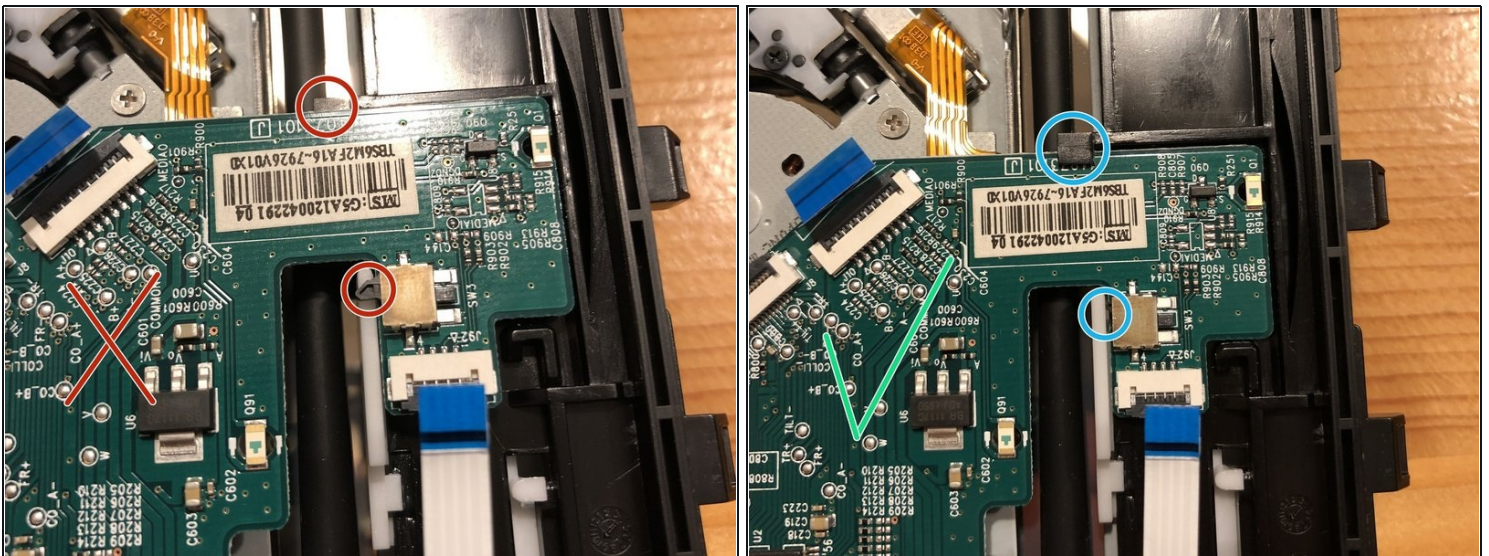


## Step 6 — Remove the PCB from the drive



- Hold the PCB and move it up. You should notice that PCB will come loose from the drive.
- Now hold in the middle and move it upward a little and the back to yourself. Be aware that it will need a little force (**especially from the right side, as a clip is holding it down**), but it should come off easily.
- That's it! You got the PCB out!

## Step 7 — Installing the new PCB



⚠ When installing the new PCB, look out for the spots as shown in Photo 1 (red circles). When you follow photo 1 and tight it with screws, you could break the PCB ! So do the opposite of Photo 1!

- Photo 2 shows correctly how the PCB need to be seated. As you can see in the blue circles.

---

To reassemble your device, follow these instructions in reverse order.

Hopefully this guide helped you to replace the PCB!