



Samsung Evergreen SGH-A667 Teardown

Teardown of a Samsung Evergreen

Written By: Sam Goldheart



INTRODUCTION

Teardown of the Samsung Evergreen, an allegedly environmentally friendly phone featuring a full QWERTY keyboard. Watch and be amazed!



TOOLS:

- [Phillips #00 Screwdriver](#) (1)
-

Step 1 — Samsung Evergreen SGH-A667 Teardown



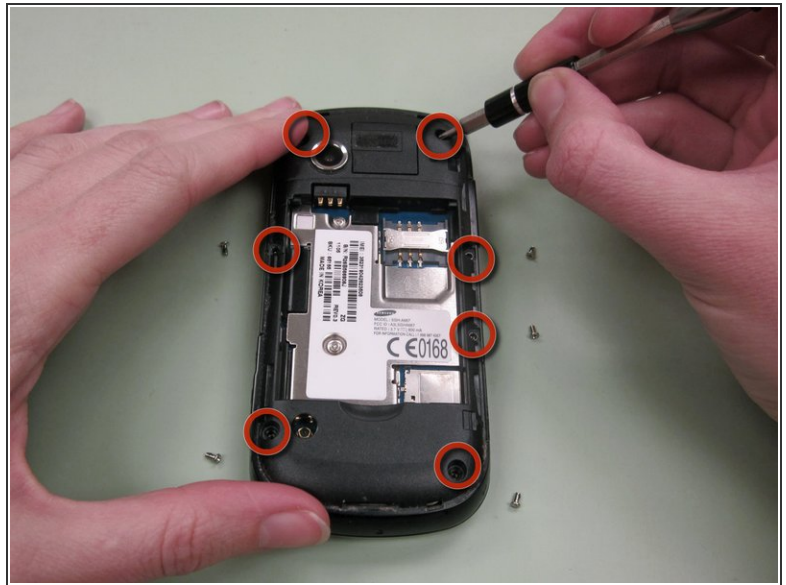
- Teardown of Samsung's [environmentally friendly](#) full keyboard messaging phone.

Step 2



- Begin by prying off the rear battery-access panel.

Step 3



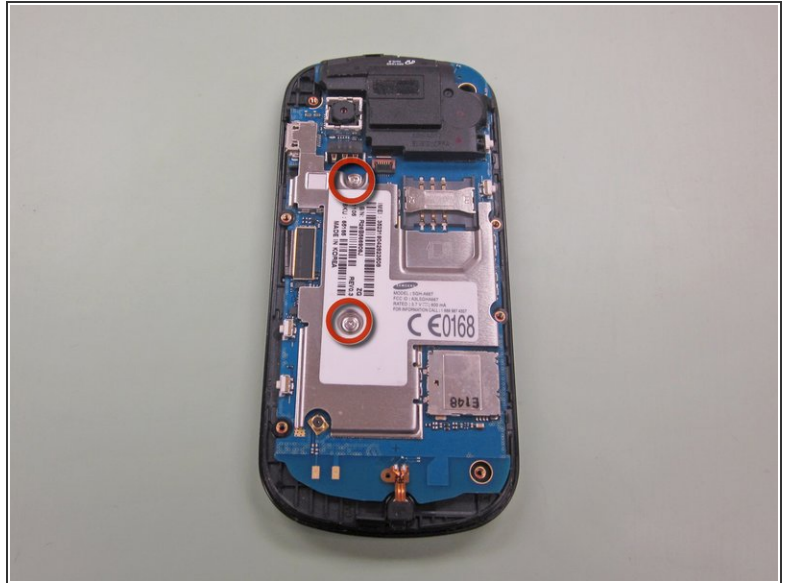
- Remove battery pack and SIM card.
- Remove the seven screws marked in red.

Step 4



- Pry the case away from the body of the phone. Be gentle around the volume control, micro USB, and micro SD ports.

Step 5



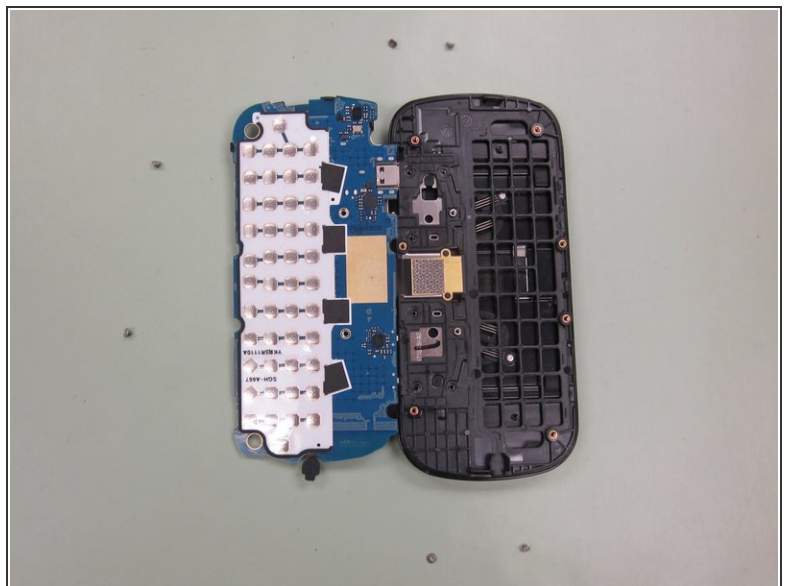
- Camera
- Keyboard ribbon connector
- Microphone
- Remove the two screws marked in red to free the EMI shielding.

Step 6



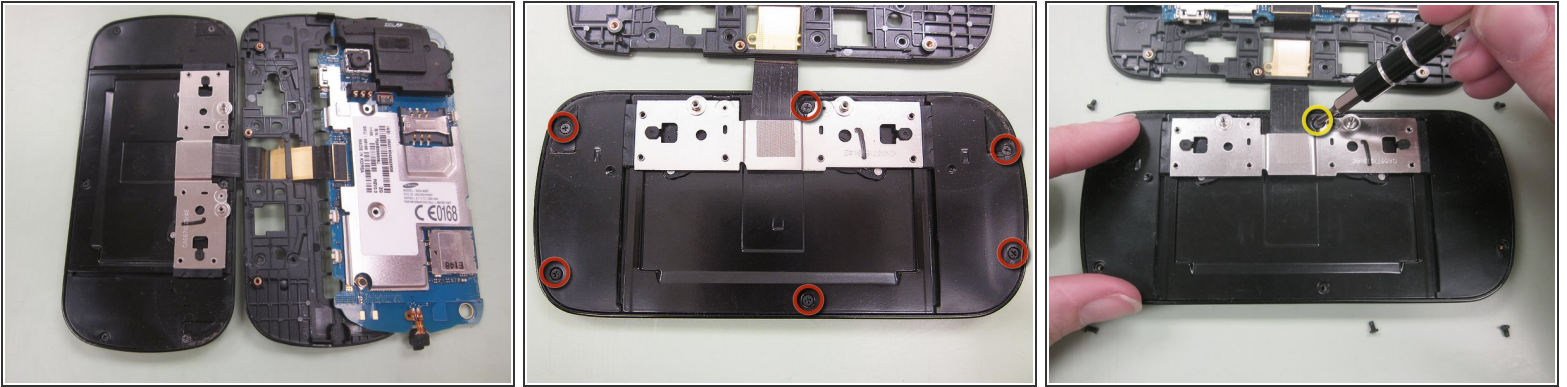
- The keyboard ribbon strings each of the pieces together, but the keypad flops right out on its own.

Step 7



- Remove the six screws marked in red; they hold the keyboard to the sliding mechanism.

Step 8



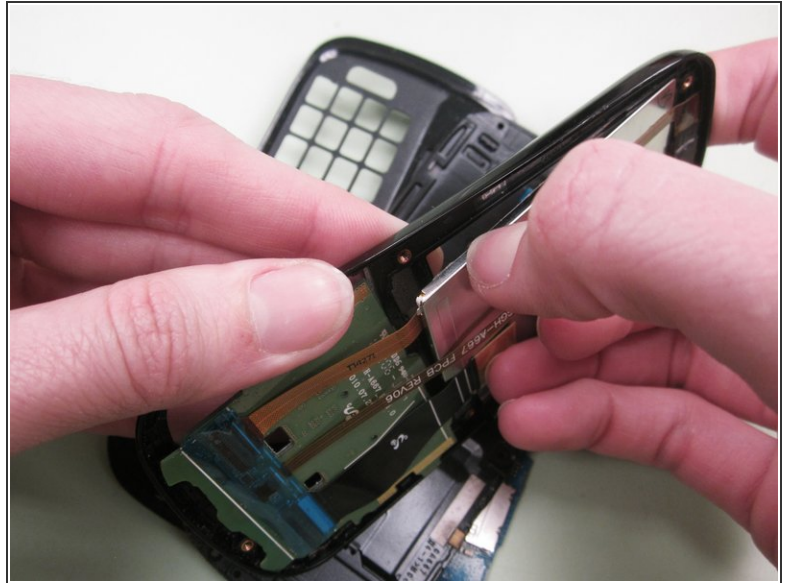
- Huzzah the sliding carriage is free—what's that? [The funk of forty thousand years?](#) This part of the phone never sees the light of day!
- Remove the six screws circled in red.
- Sometimes this screw is hidden by the ribbon cable!

Step 9



- More plastic clips means a little more finagling to pry the front case off.
- The work pays off with a snappy line-up.

Step 10



- Gently flex the faceplate to loosen the adhesive's hold on the screen.
- After loosening all edges, begin to peel the LCD from the plastic. When in doubt, stop, look, and listen; just like crossing the street.

Step 11



- The sum of its parts
- Use these steps in reverse to reassemble—a method tried and true!

To reassemble your device, follow these instructions in reverse order.