



LG K20 PLUS Ear Speaker Replacement

Written By: Patrick





TOOLS:

- [Phillips #00 Screwdriver](#) (1)
- [iFixit Opening Picks set of 6](#) (1)
- [Halberd Spudger](#) (1)
- [Heat Gun](#) (1)
- [Jimmy](#) (1)

Step 1 — Remove the back cover and battery



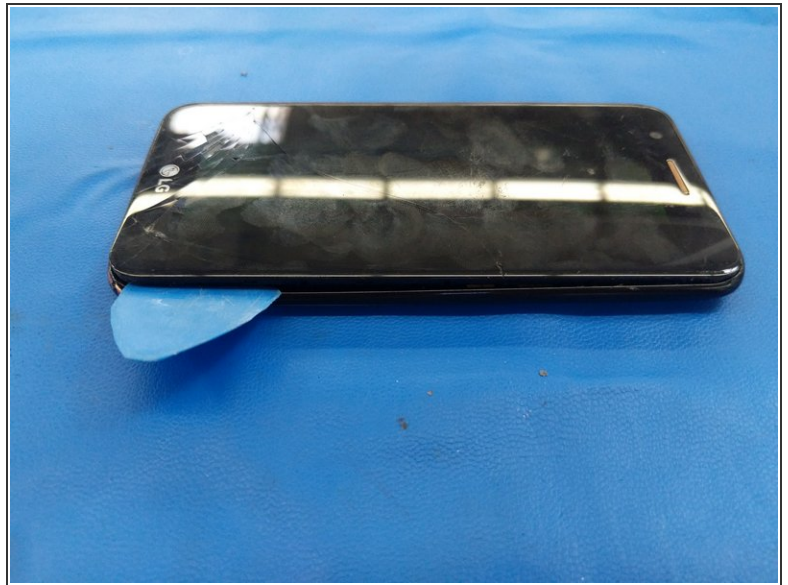
- Remove the back cover by inserting a fingernail or opening pick here and disengaging the plastic clips.
- Lift battery up here

Step 2 — Midframe



- Remove 11 Philips screws.

Step 3



- Use fingernails or insert an opening pick into the gap between the digitizer and the midframe and pull the midframe outwards to disengage the plastic clips.
- Carefully disengage the clips on the bottom as the headphone jack goes through the midframe.
- Once all the clips have been disengaged, move the midframe outwards and downwards to disengage it from the headphone jack.

Step 4 — Rear-Facing Camera



- Use a Halberd spudger or an opening pick to disconnect the front camera flex from its connector on the motherboard.

Step 5 — Motherboard Removal



- Using the tip of a Halberd spudger or an opening pick, disconnect the display flex cable from its socket on the motherboard.
 - Starting from the bottom, insert an opening pick between the motherboard and frame and lever apart.
- ⚠ Be careful not to break the long section of the motherboard.

- ⓘ The top part of the motherboard is lightly adhered to the frame.
- ★ After the motherboard is removed, compare the original and replacement part. Some components may already be installed on the replacement display assembly.

Step 6 — Ear Speaker Removal



- The flex cable and speaker are held in with adhesive. Use heat to soften the adhesive.
- Carefully insert a Jimmy between the flex cable and the frame and detach the cable from the adhesive.
- Then use the tip of a metal spudger to continue carefully prying the ear speaker up out of its housing.

To reassemble your device, follow these instructions in reverse order.