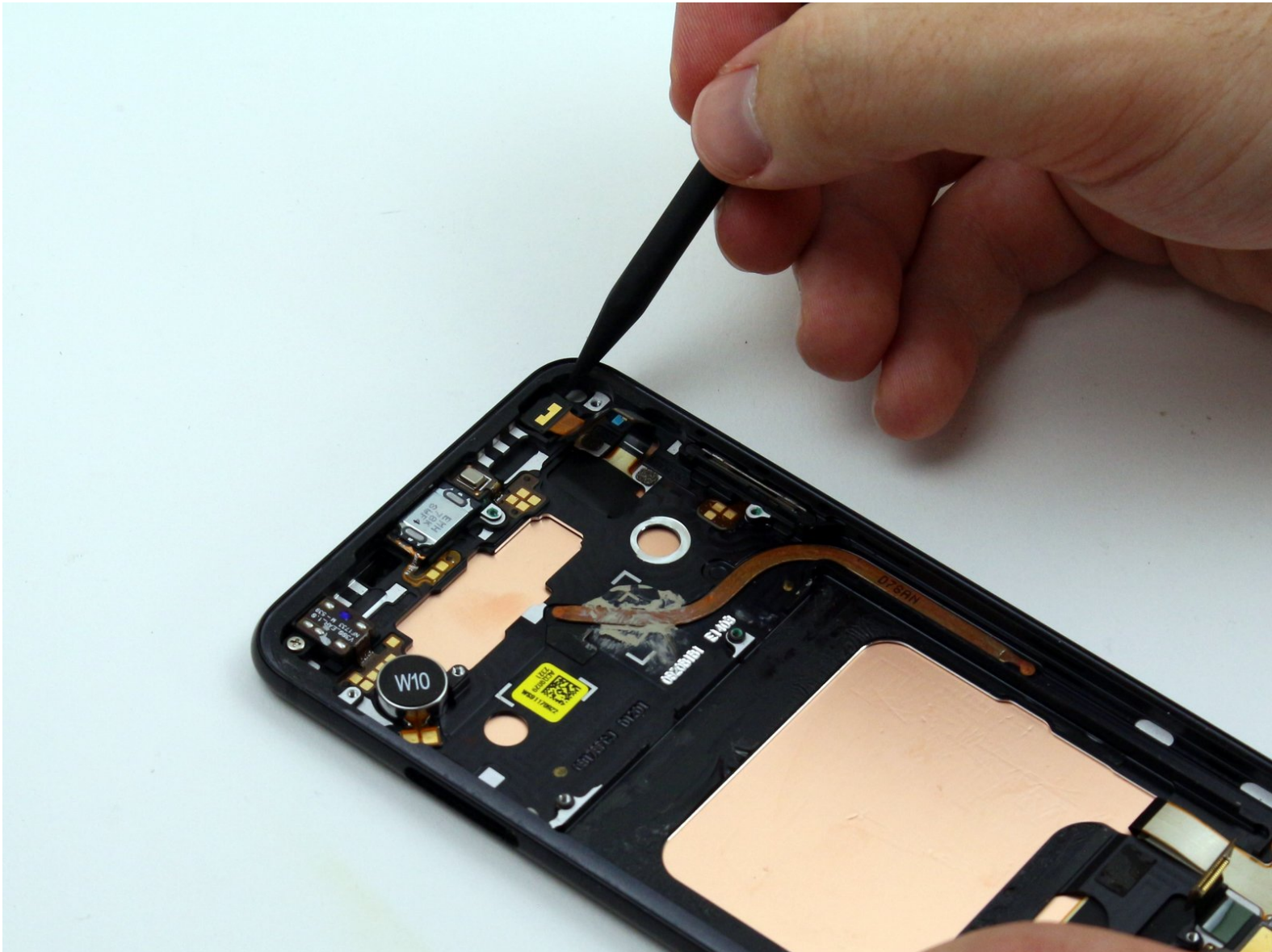




LG V30 Plus Front-Facing Camera Replacement

This guide will teach you how to replace the front-facing camera in your LG V30 Plus.

Written By: Samuel Jahnke



INTRODUCTION

If your device isn't properly taking photos or showing images, the camera may be the underlying issue. Use this guide to replace the front-facing camera in your phone.



TOOLS:

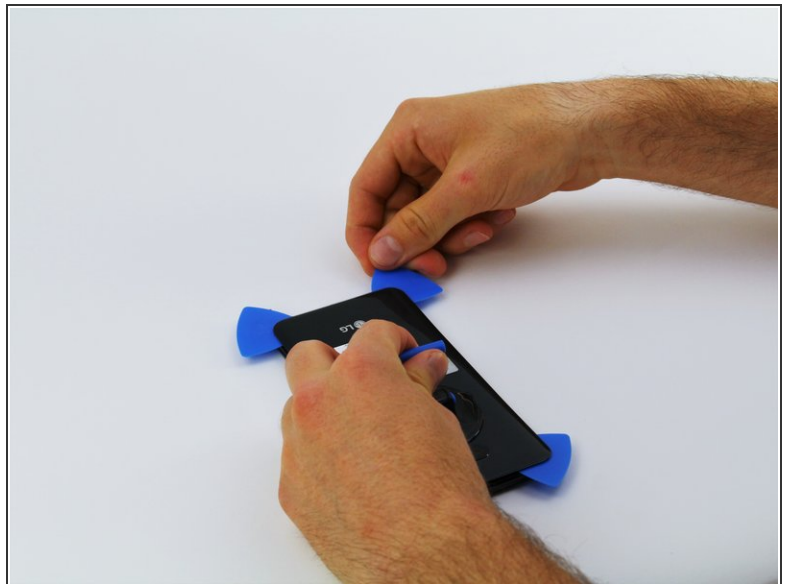
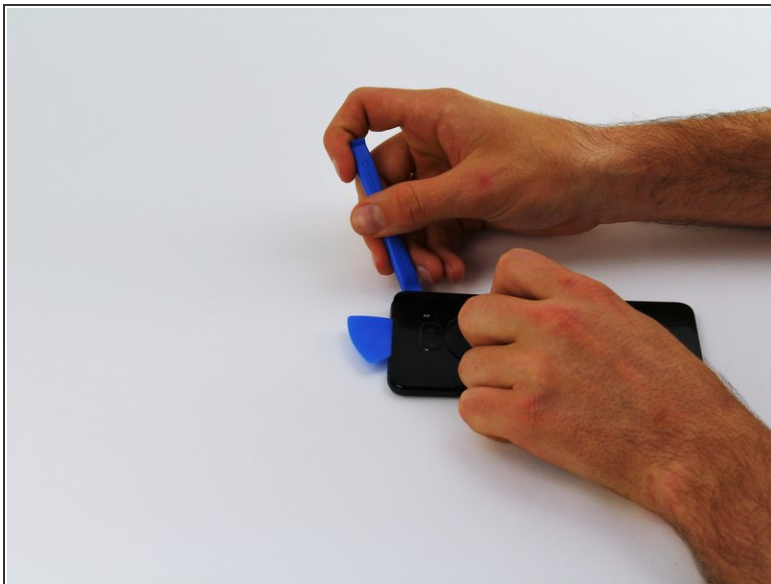
- [Phillips #0 Screwdriver](#) (1)
 - [Suction Handle](#) (1)
 - [iFixit Opening Tools](#) (1)
 - [iFixit Opening Picks set of 6](#) (1)
 - [iOpener](#) (1)
-

Step 1 — Rear Glass



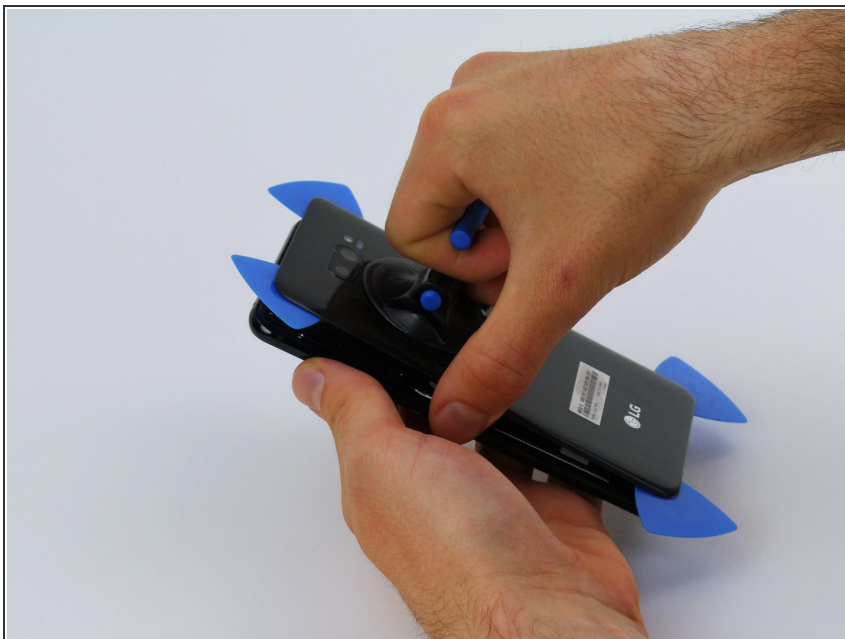
- Use a pair of iOpeners by heating them in a microwave and placing the hot pads on the edges of the phone.
- Allow to sit for 1-2 minutes to heat up the adhesive.
- ❗ A heat gun may need to be used if you have trouble separating the backing in the next step.

Step 2



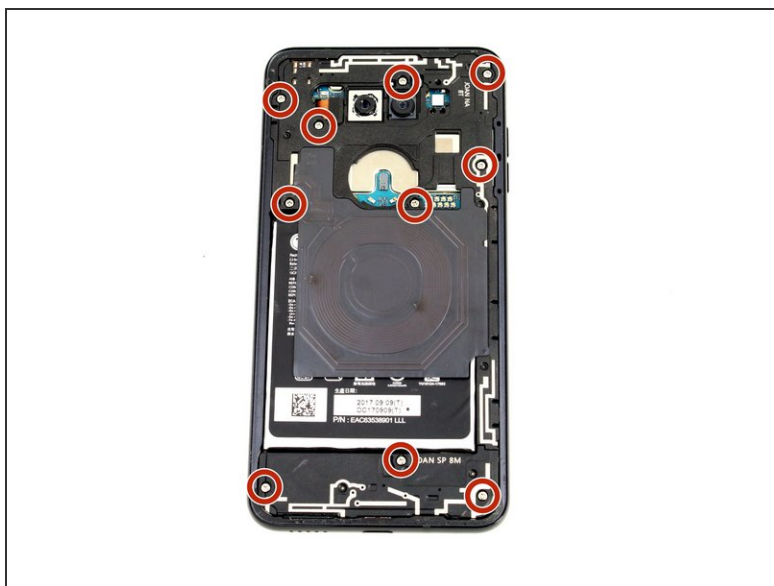
- Insert an Opening Tool into the seam between the rear glass and side of the phone.
- Pry the glass off just enough to insert an Opening Pick.
- Slide the Opening Tool around the edges of the device, placing Opening Picks regularly.

Step 3



- Once all edges of the device are lifted free, use a Suction Handle to gently pull the rear glass off the device.

Step 4 — Motherboard



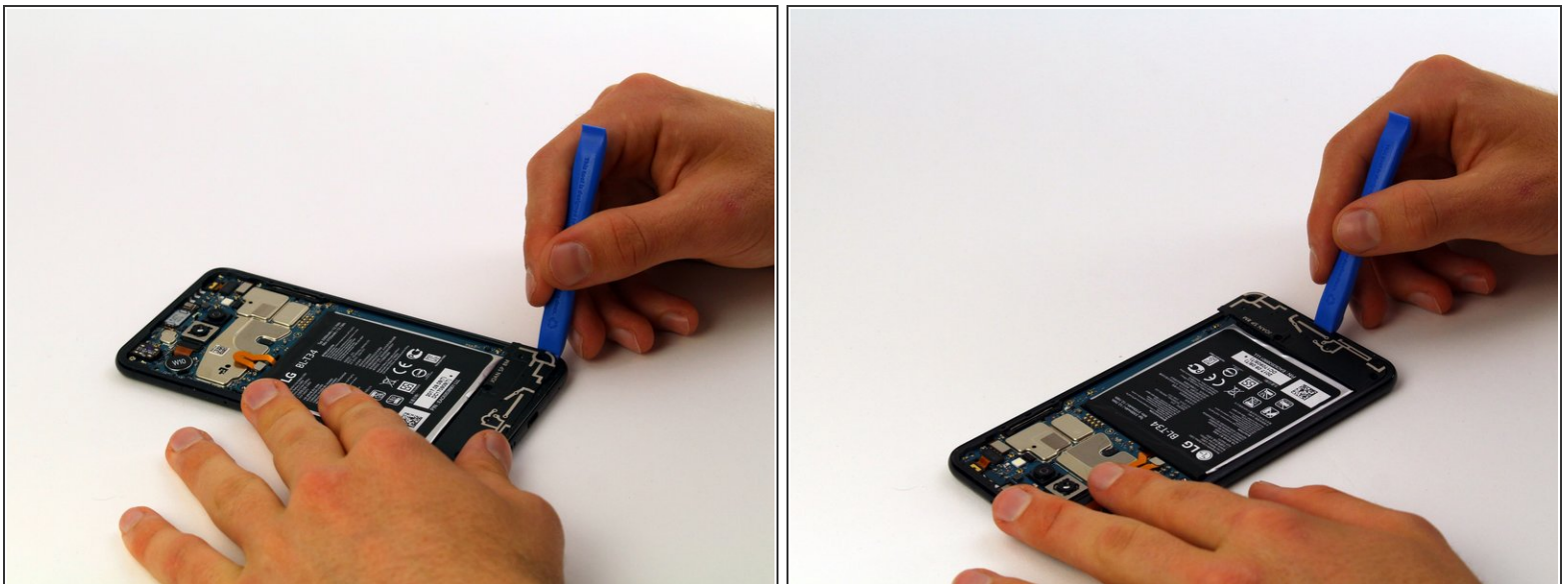
- Remove the ten 4mm screws using the Phillips #00 Screwdriver.

Step 5



- Gently push down on the small black tab with a Spudger to release the protective board.
- Slide an Opening Tool between the phone and the protective board and slide along the edges of the phone to unclip it.
- Carefully wiggle the board back and forth while gently pulling to unclip the last attachment point.

Step 6



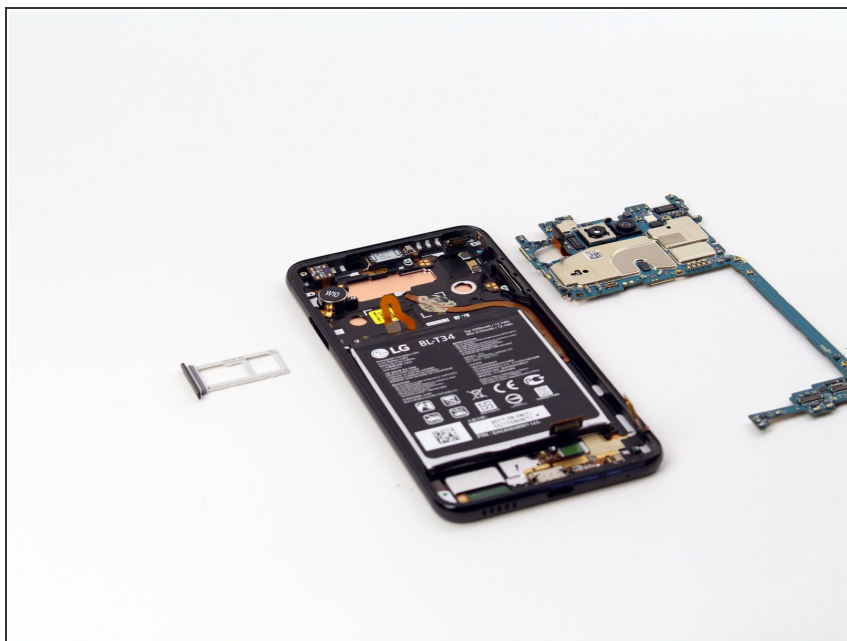
- Slide an Opening Tool between the lower protective board and the phone to unclip.
- Slide the tool along the remaining edges of the protective board until it pops off.

Step 7



- Gently pry each visible ribbon cable away from the motherboard to disconnect them.

Step 8



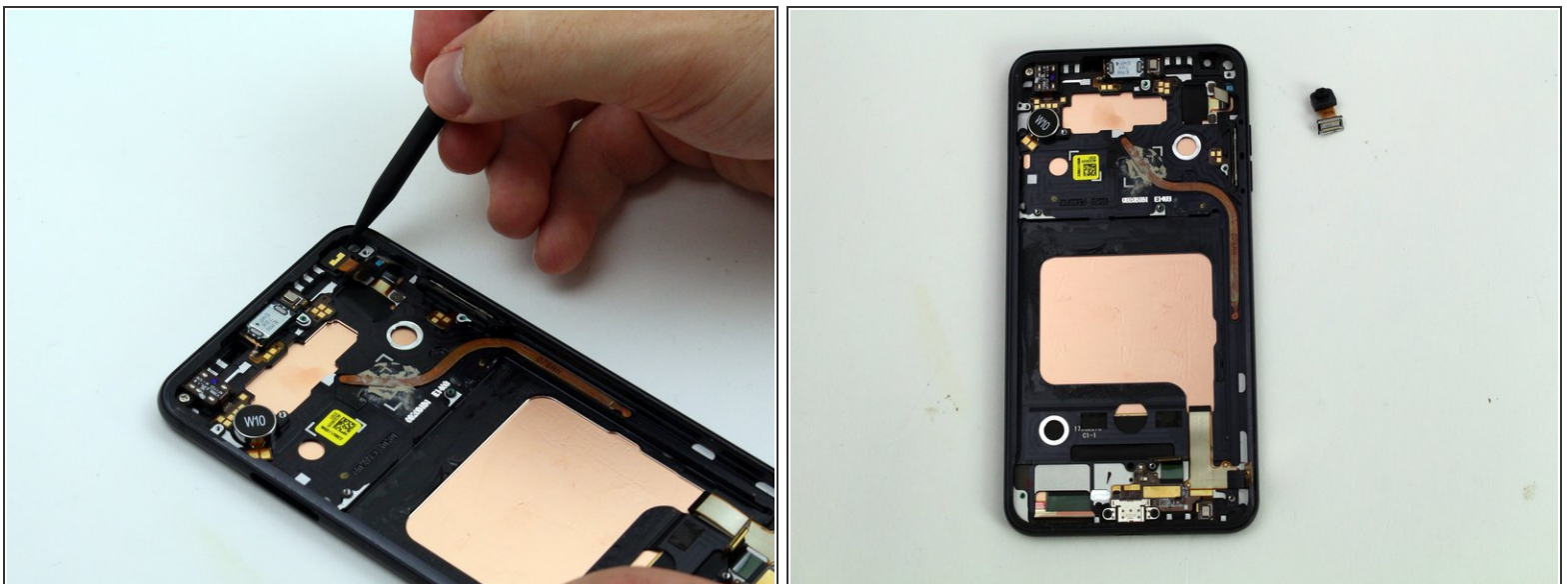
- Gently remove the motherboard from the phone.

Step 9 — Battery



- Use a Spudger to get between the battery and the phone and pry each edge of the battery away from the board.
- ⓘ There may be a strong adhesive under the battery, so work your way around the battery carefully and slowly.
- Insert Opening Picks if needed to keep the battery elevated.

Step 10 — Front-Facing Camera



- Use a Spudger to pry away the front-facing camera from the board.

To reassemble your device, follow these instructions in reverse order.