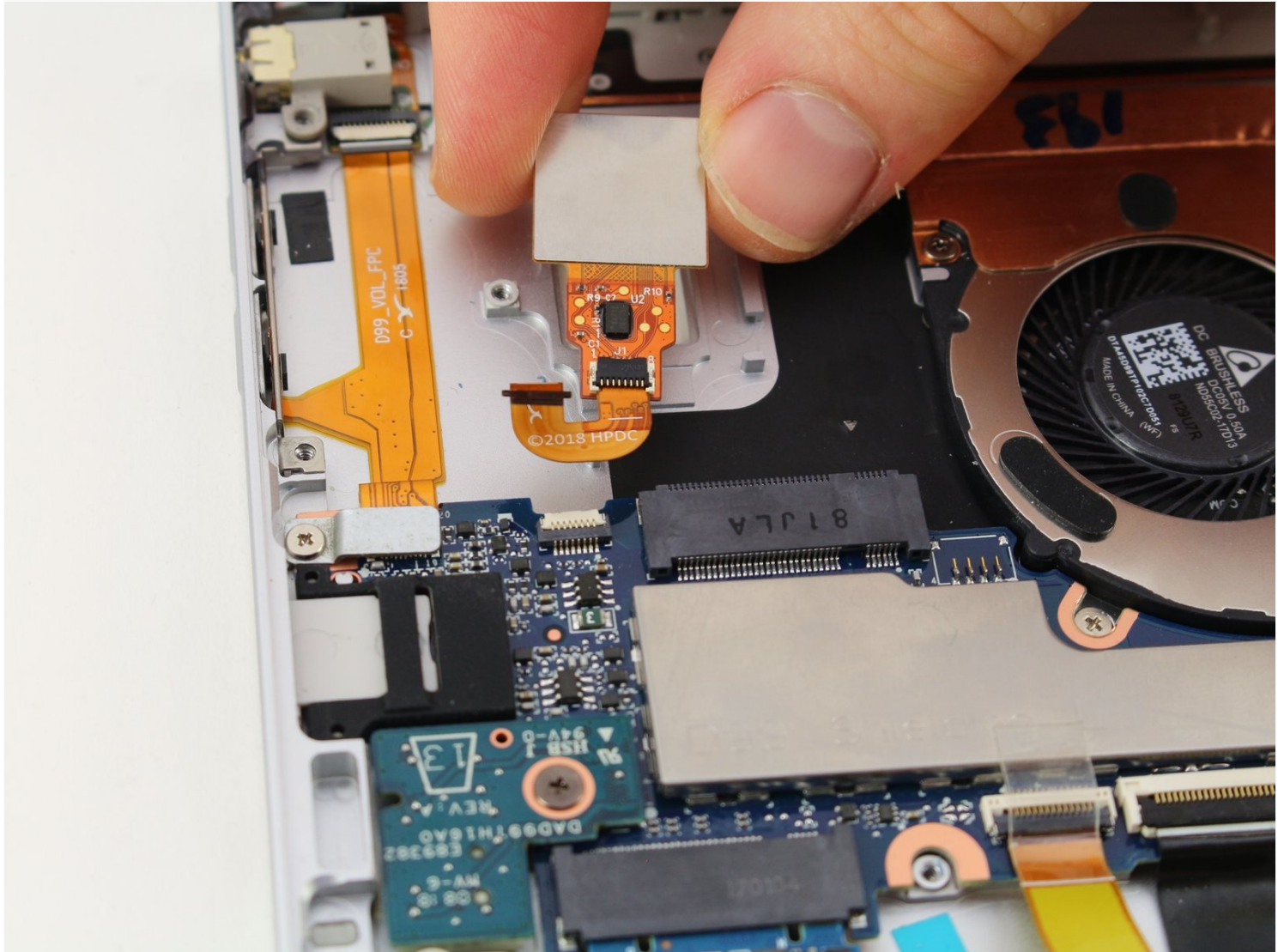




# HP Elite X2 1013 G3 Fingerprint Scanner Replacement

If your laptops Fingerprint Scanner is damaged...

Written By: Hunter Baird-Wise



# INTRODUCTION

If your laptops Fingerprint Scanner is damaged or no longer functioning reliably, use this guide to remove and replace it.

## TOOLS:

Phillips #00 Screwdriver (1)

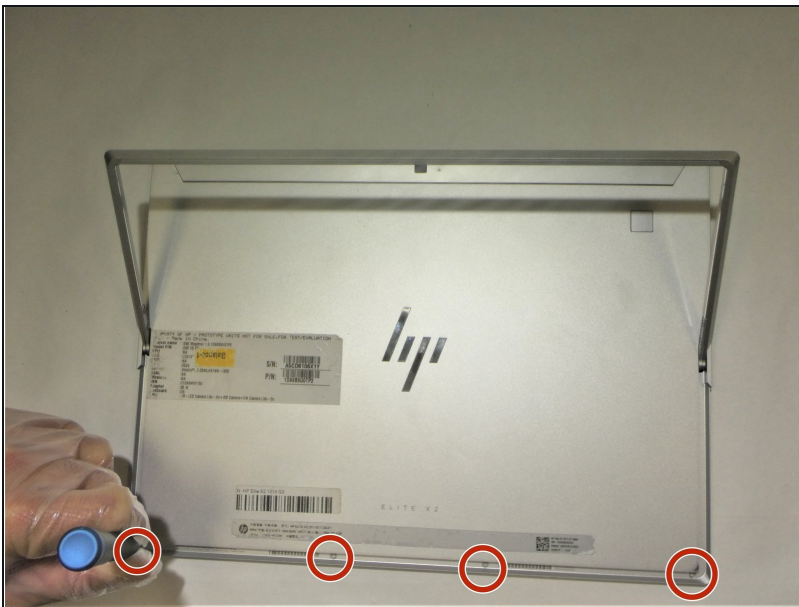
Tweezers (1)

Spudger (1)

Suction Handle (1)

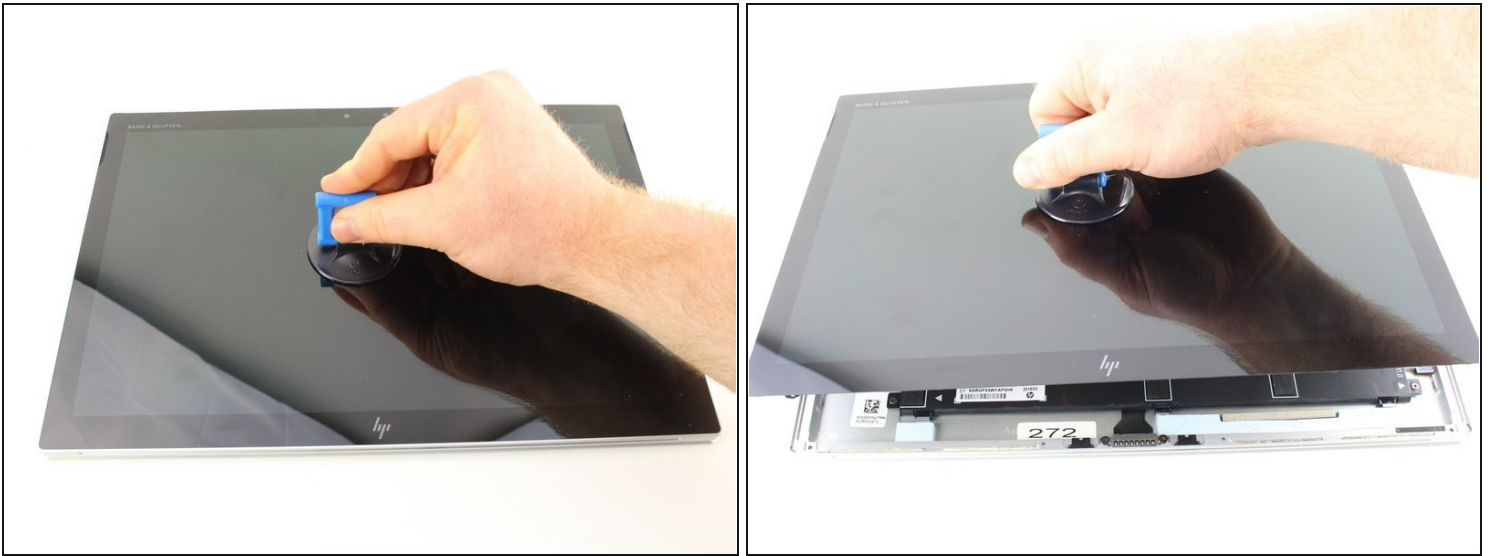
T5 Torx Screwdriver (1)

## Step 1 — Screen



- Flip the device over so the base is facing the ceiling.
- Lift up the tablet stand.
- Remove the four 2 mm screws from the tablet using a T5 Torx screwdriver.

## Step 2

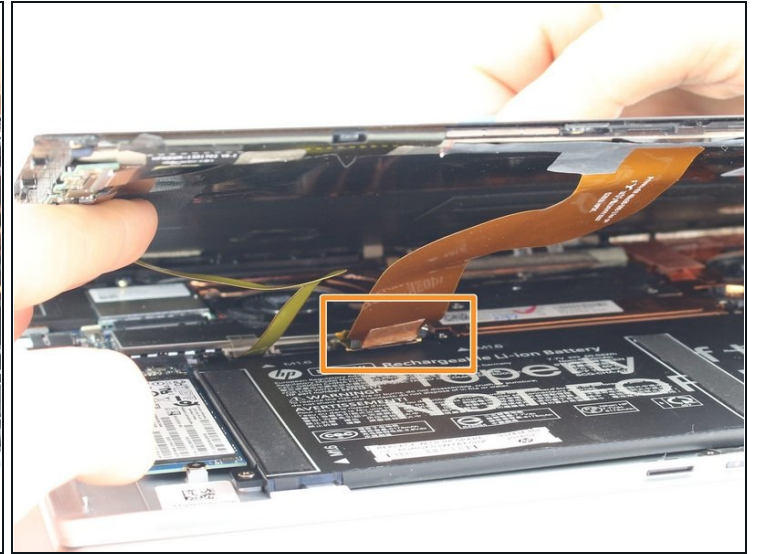
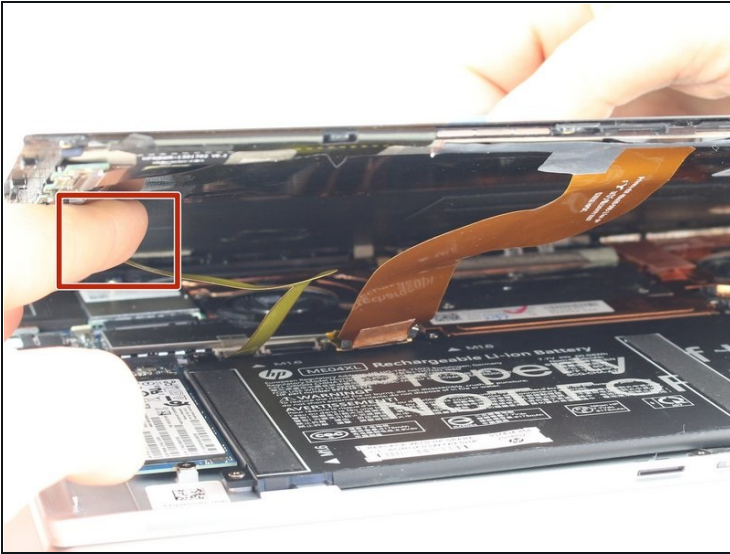


- Flip the tablet over with the screen facing upwards.
- Place the suction handle in the center of the screen and slowly lift off the screen until it is at a 30 degree angle, starting by gently prying up the bottom.

**⚠ Do not pull the screen beyond a 30 degree angle. Additional internal components must be disconnected first.**

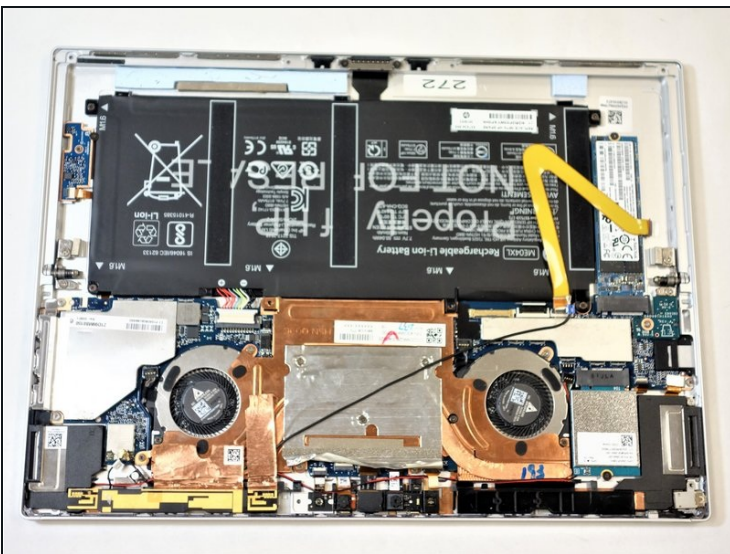


### Step 3



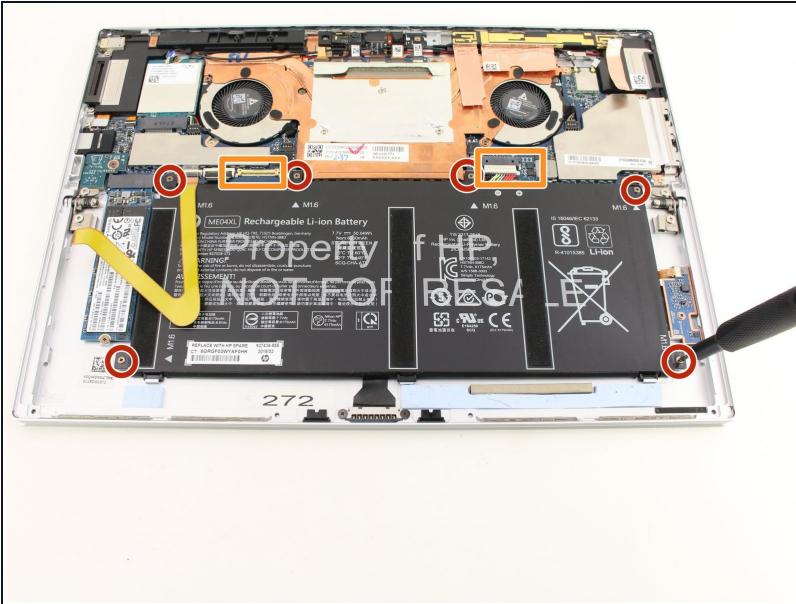
- With the screen lifted at a 30 degree angle, gently disconnect the yellow ribbon cable at the end connected to the screen.
- Gently disconnect the orange ribbon cable at the end connected to the bottom plate.

### Step 4



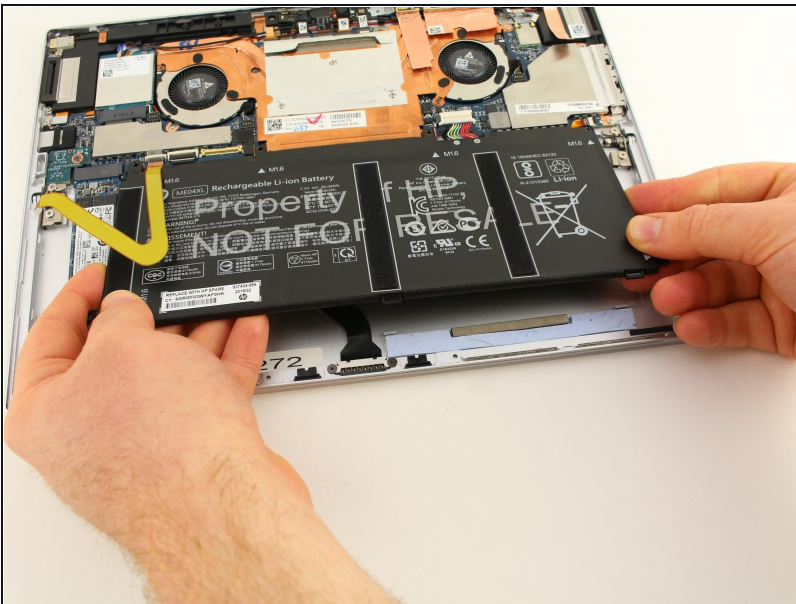
- Remove the screen from the tablet.

## Step 5 — Battery



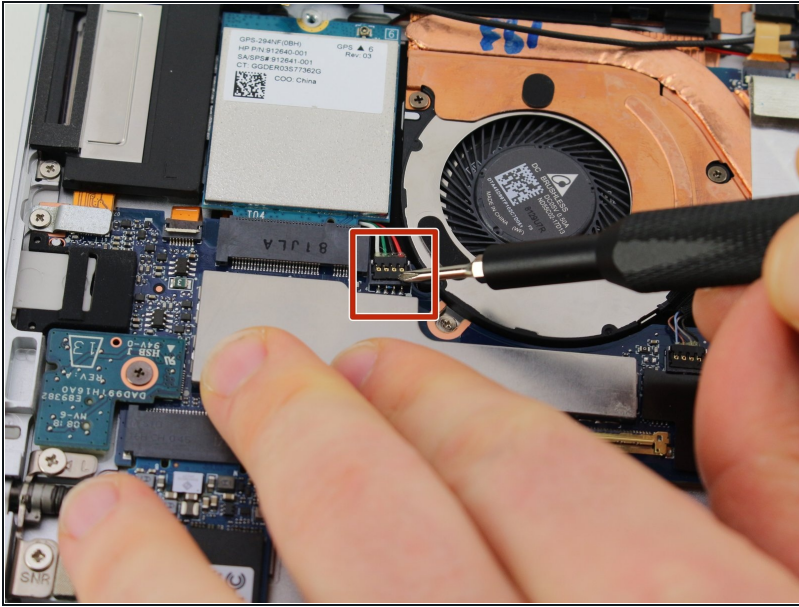
- Use the Phillips #00 screwdriver to remove the six 2 mm screws.
- Gently disconnect the two connectors.

## Step 6



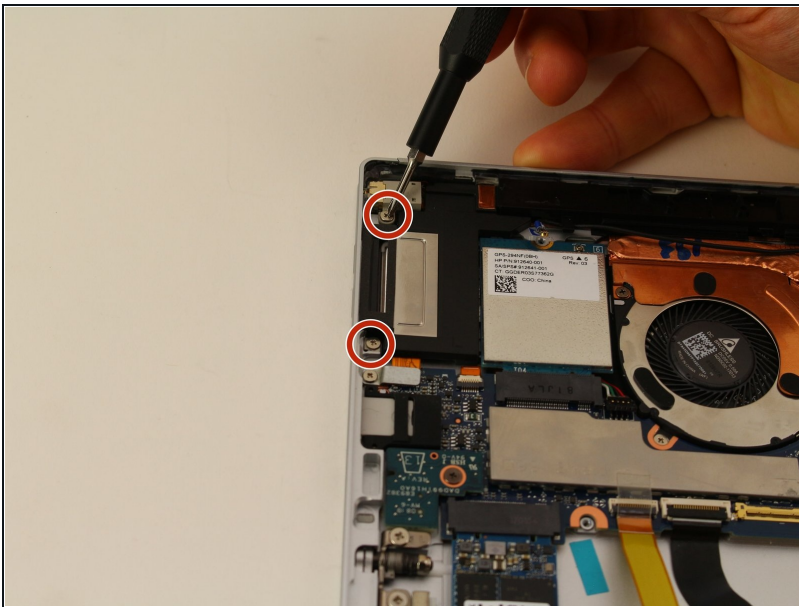
- Lift the battery out of the housing.

## Step 7 — Fingerprint Scanner



- Disconnect the connector from the motherboard with your fingers.
- ⓘ The screwdriver is only used as a pointing device. Never attempt to use a screwdriver to pry components apart.

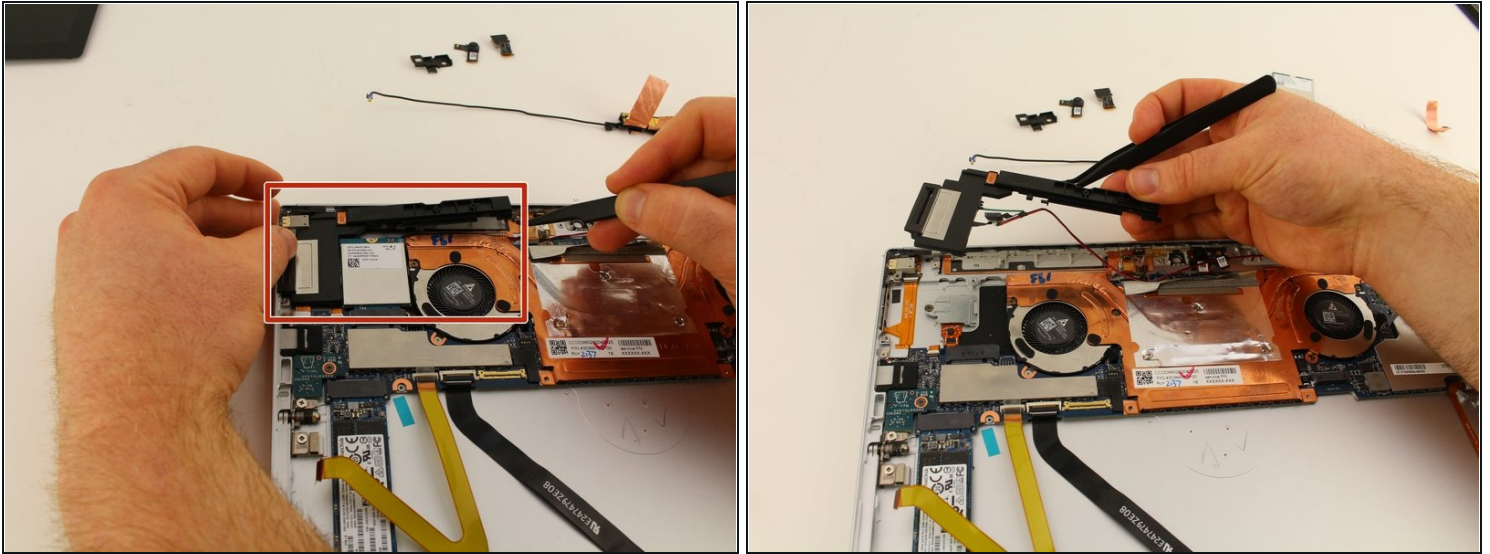
## Step 8



- Remove the two speaker/antenna module mounting 2mm screws using a Phillips #00 Screwdriver.

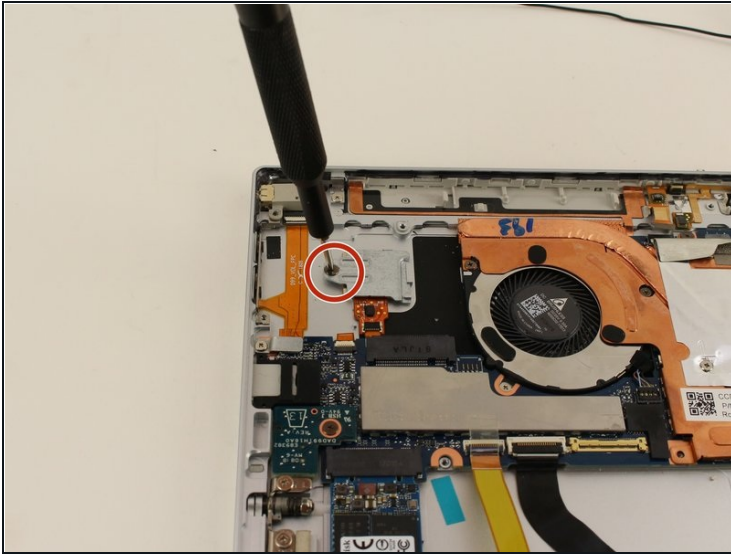


## Step 9



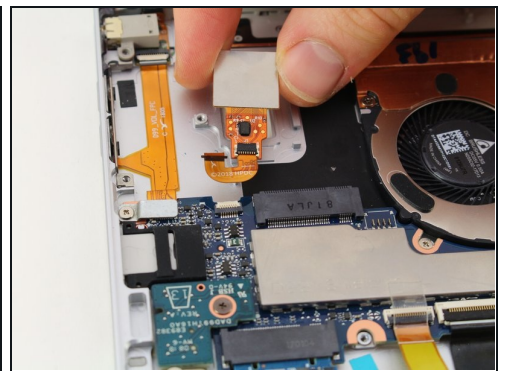
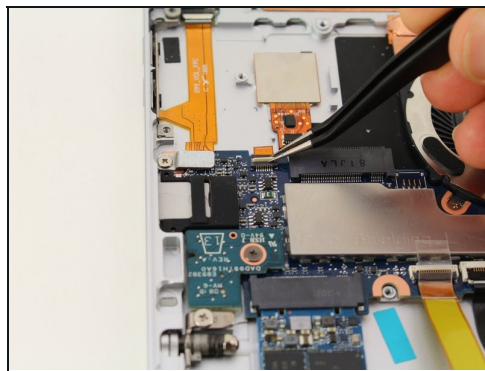
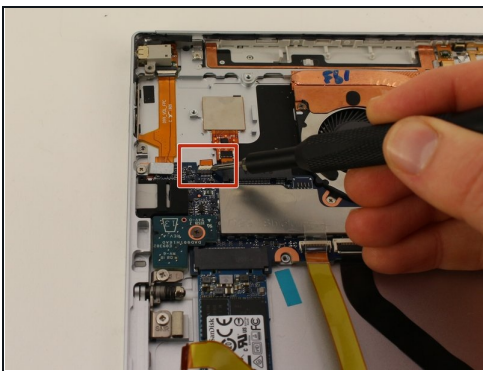
- Use a spudger to gently pry the left black plastic speaker/antenna module off of the frame as pictured. Start by lifting up the right side of the module, then slowly work your way down the module towards the right.
- ① The slight cracking sound you will hear is the sounds of plastic clasps.
- ① We removed other peripherals from the frame so we could move the speaker/antenna module completely out of the way for photographing. You should not have to do this to replace just the fingerprint scanner.

## Step 10



- Remove the 2mm bracket mounting screw from the frame using a Phillips #00 Screwdriver.
- Lift up the bracket and set aside.

## Step 11



- Open the ribbon cable clamp and pull the cable out.
- ① You may require tweezers to slide the ribbon cable out of the clamp.
- Lift out the fingerprint scanner.

---

To reassemble your device, follow these instructions in reverse order.