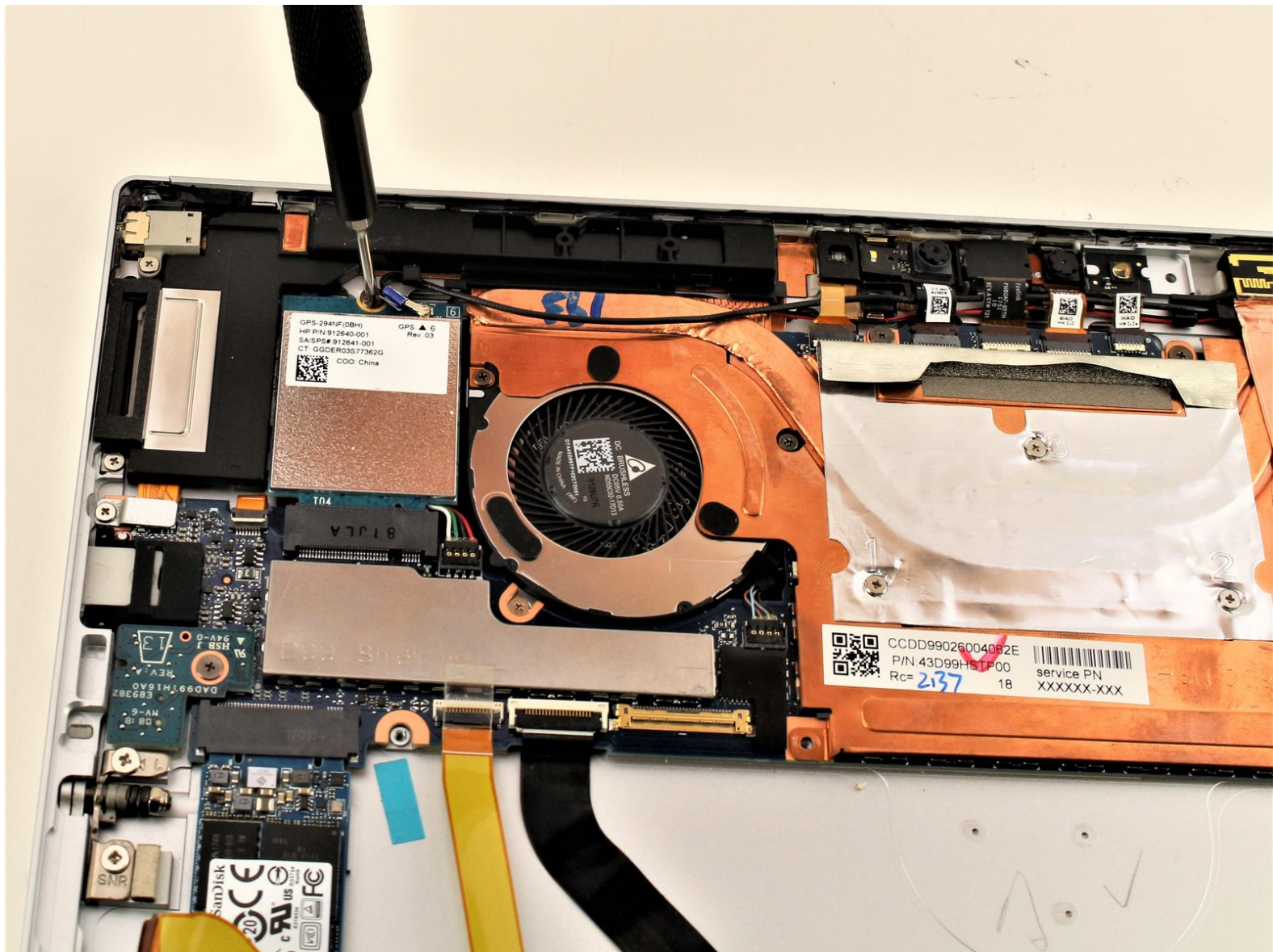




HP Elite X2 1013 G3 Wireless Card Replacement

Use this guide to replace the wireless card in your HP Elite X2 1013 G3.

Written By: Kory Haydon



INTRODUCTION

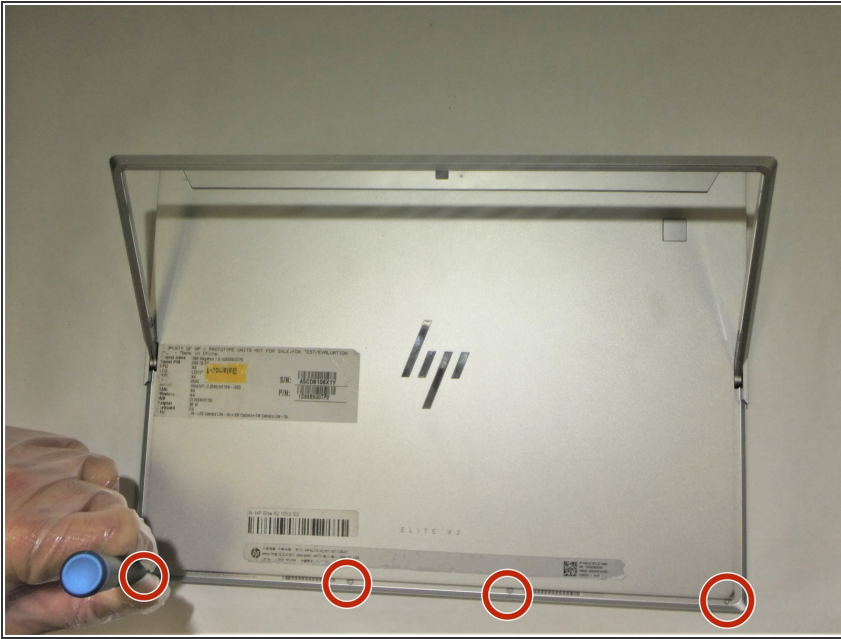
If your device cannot access or recognize your Wi-Fi networks, the wireless card may be faulty. This guide will show you how to replace the wireless card in your device.



TOOLS:

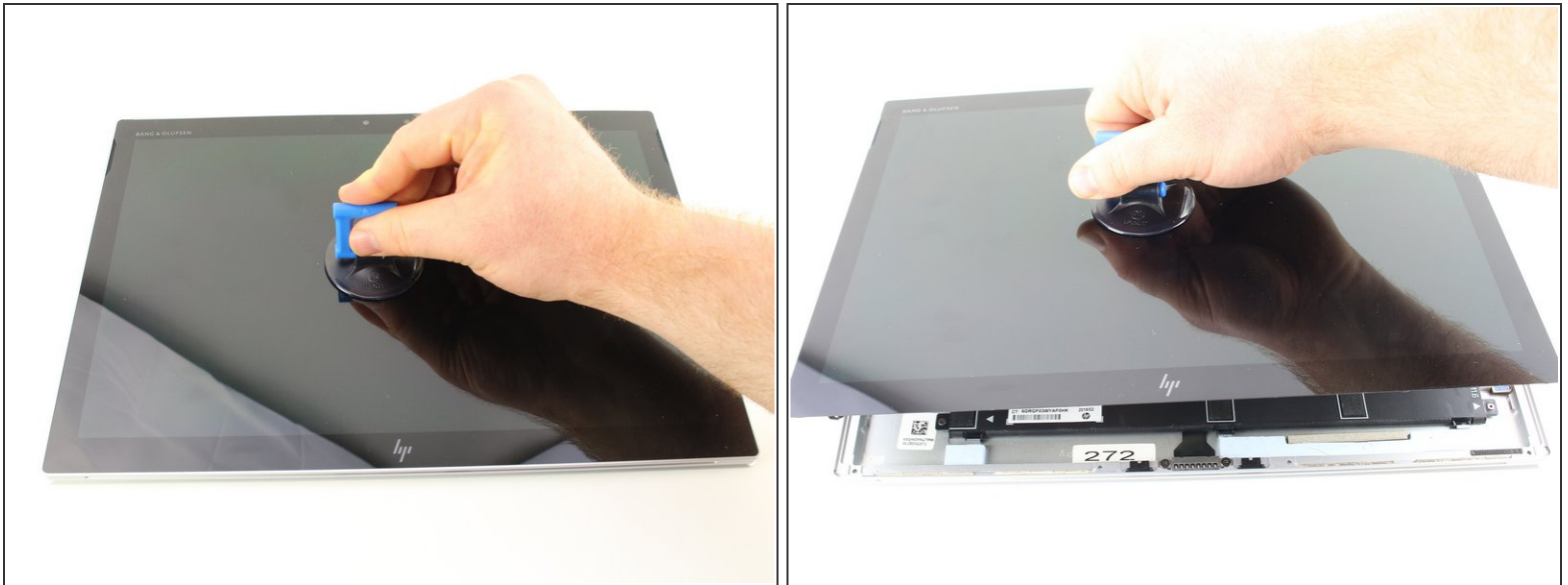
- [Phillips #00 Screwdriver](#) (1)
 - [Suction Handle](#) (1)
 - [T5 Torx Screwdriver](#) (1)
-

Step 1 — Screen



- Flip the device over so the base is facing the ceiling.
- Lift up the tablet stand.
- Remove the four 2 mm screws from the tablet using a T5 Torx screwdriver.

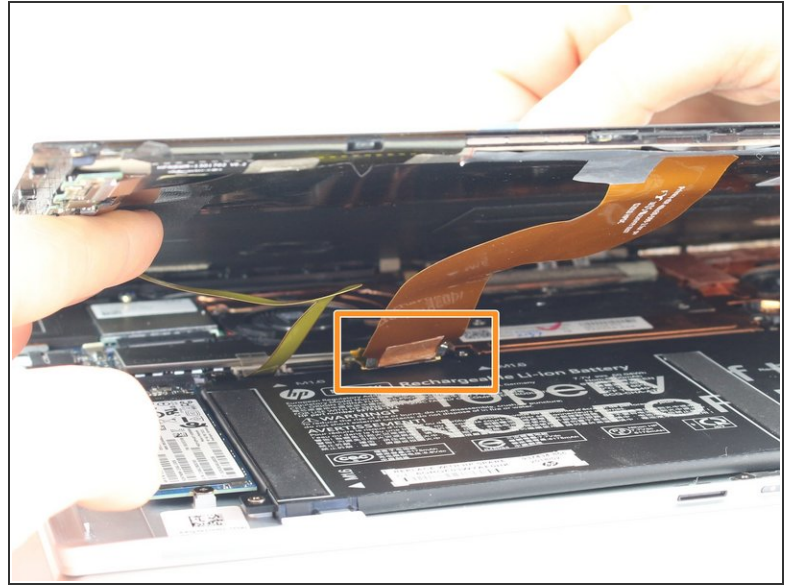
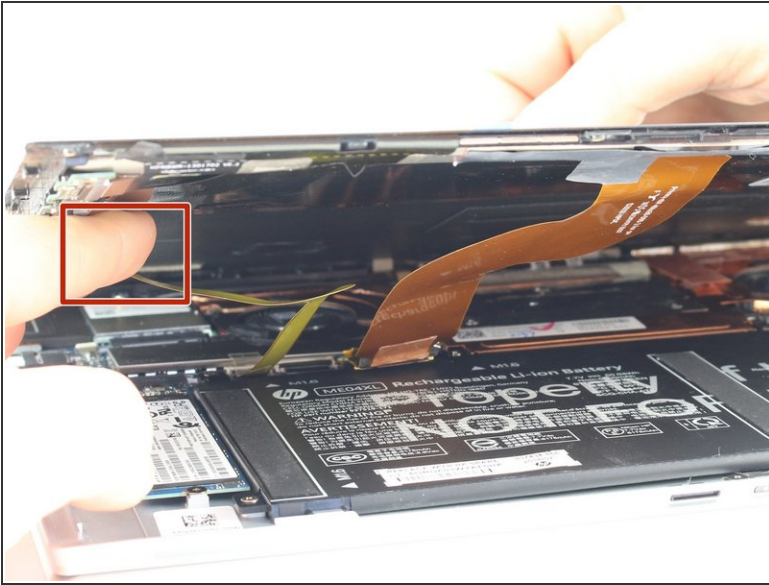
Step 2



- Flip the tablet over with the screen facing upwards.
- Place the suction handle in the center of the screen and slowly lift off the screen until it is at a 30 degree angle, starting by gently prying up the bottom.

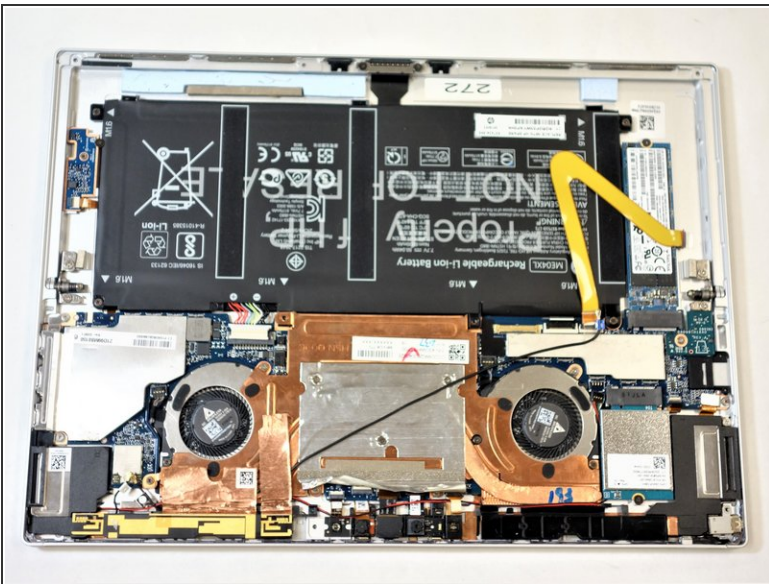
⚠ Do not pull the screen beyond a 30 degree angle. Additional internal components must be disconnected first.

Step 3



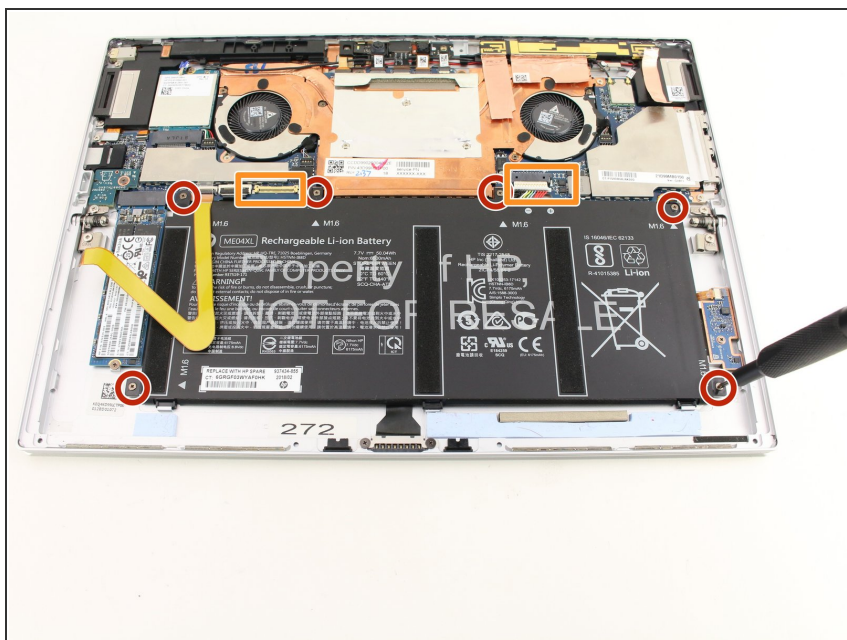
- With the screen lifted at a 30 degree angle, gently disconnect the yellow ribbon cable at the end connected to the screen.
- Gently disconnect the orange ribbon cable at the end connected to the bottom plate.

Step 4



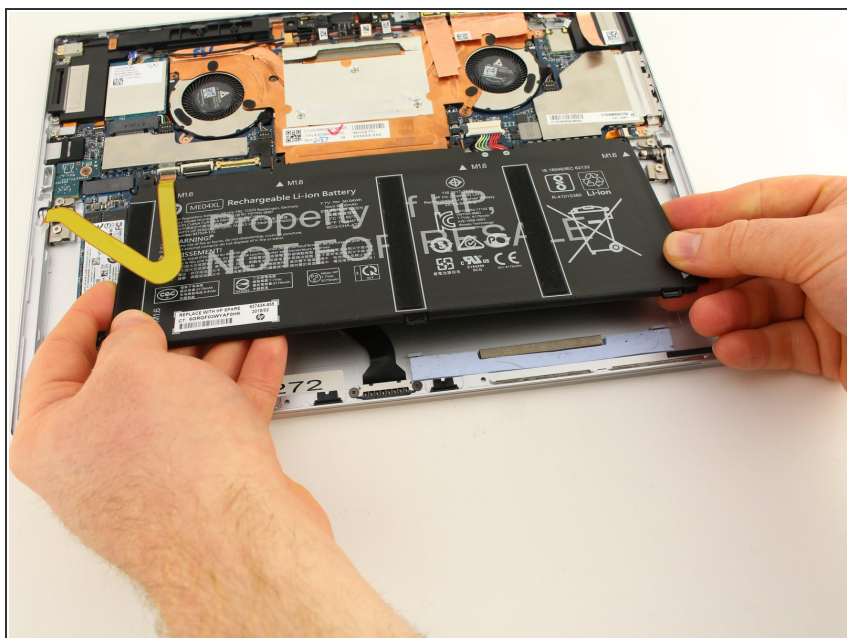
- Remove the screen from the tablet.

Step 5 — Battery



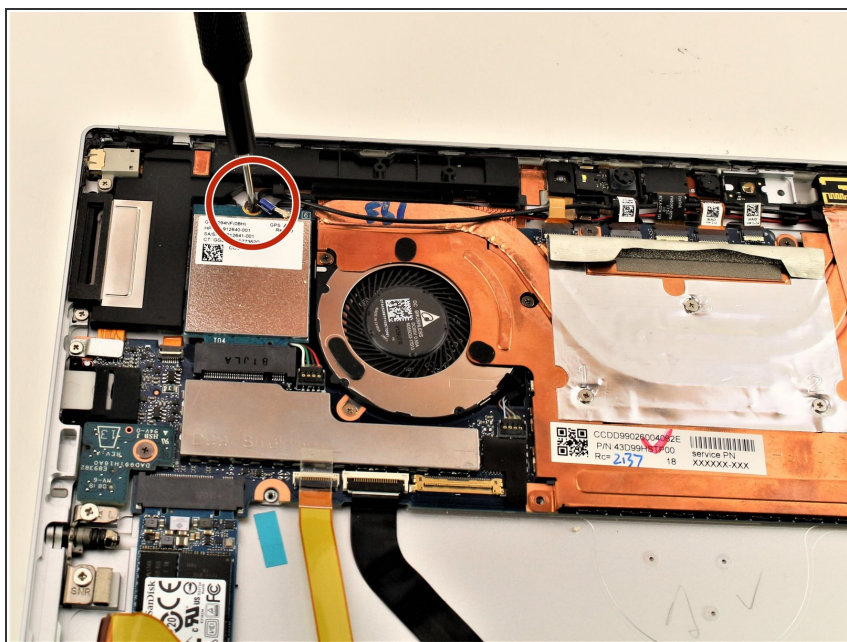
- Use the Phillips #00 screwdriver to remove the six 2 mm screws.
- Gently disconnect the two connectors.

Step 6



- Lift the battery out of the housing.

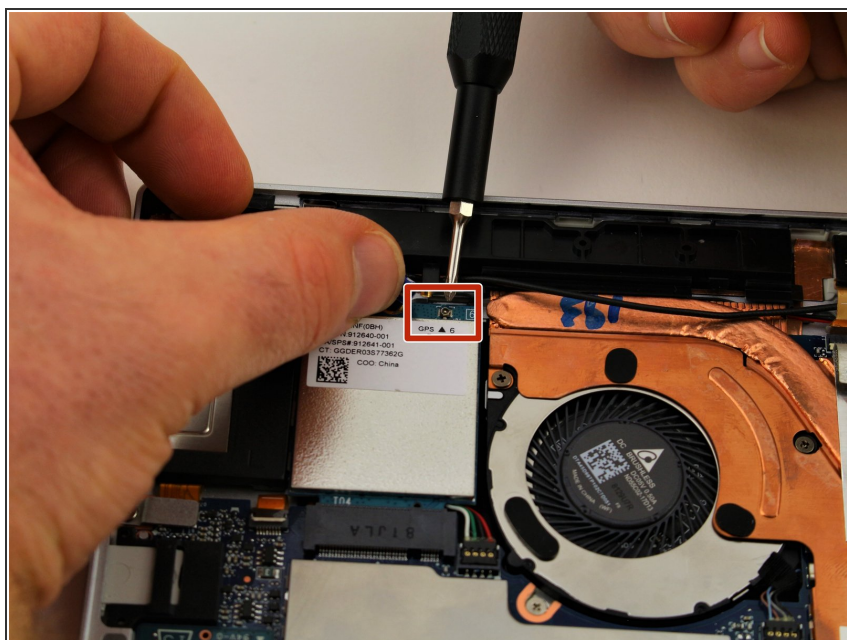
Step 7 — Wireless Card



⚠ Make sure the laptop is turned off and the battery is removed before continuing!

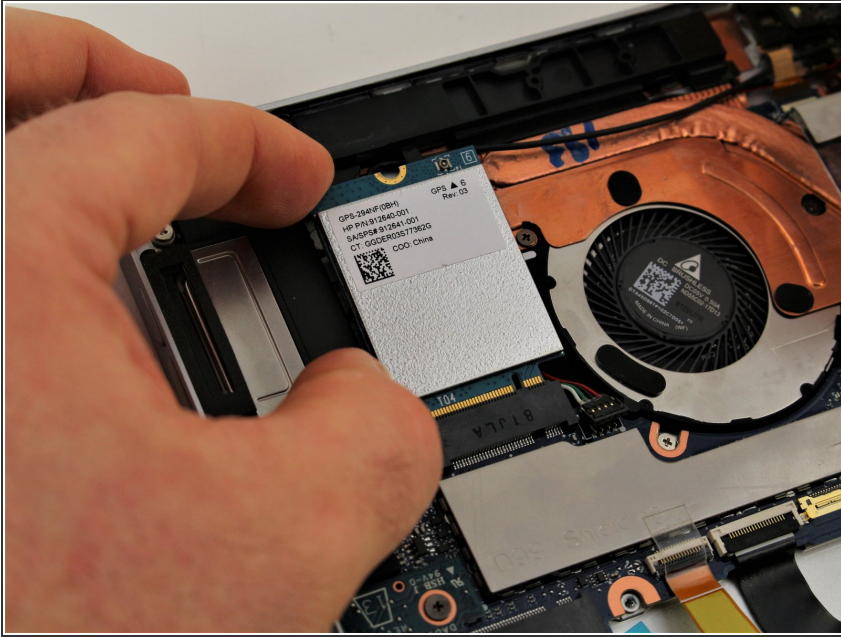
- Remove the single 2 mm screw with a Phillips #00 Screwdriver.

Step 8



- Gently disconnect the single wire connector with your finger.

Step 9



- Gently lift the wireless card and firmly pull it out of the motherboard.

⚠ Pay attention to the orientation of the wireless card. Trying to put your replacement wireless card in the wrong way could damage the part or the connector.

To reassemble your device, follow these instructions in reverse order.