



GATEWAY NE56R09u RAM Replacement

This replacement guide will give you a better understanding and demonstration on how to properly replace a RAM module on a Gateway NE56R09u.

Written By: joshua depina



INTRODUCTION

The purpose of the RAM are for quick and temporary memory slots, this model specifically has two RAM that are blue in color. Before attempting to do a replacement, make sure your device is powered off and make sure to read through the guide first before jumping straight into a repair. Safety is always first!

TOOLS:

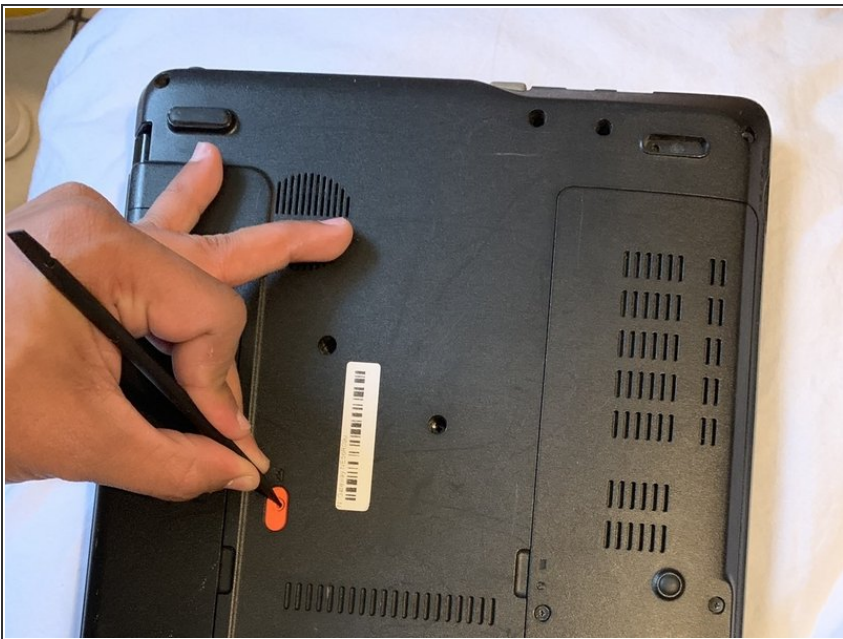
- [Spudger](#) (1)
 - [Phillips #1 Screwdriver](#) (1)
-

Step 1 — Battery



- Before doing anything, first make sure the laptop is turned off and flipped over. In this position your laptop's bottom side should be facing up.

Step 2



- Using a nylon spudger or your fingers, push down on the battery clip to release the battery.

Step 3



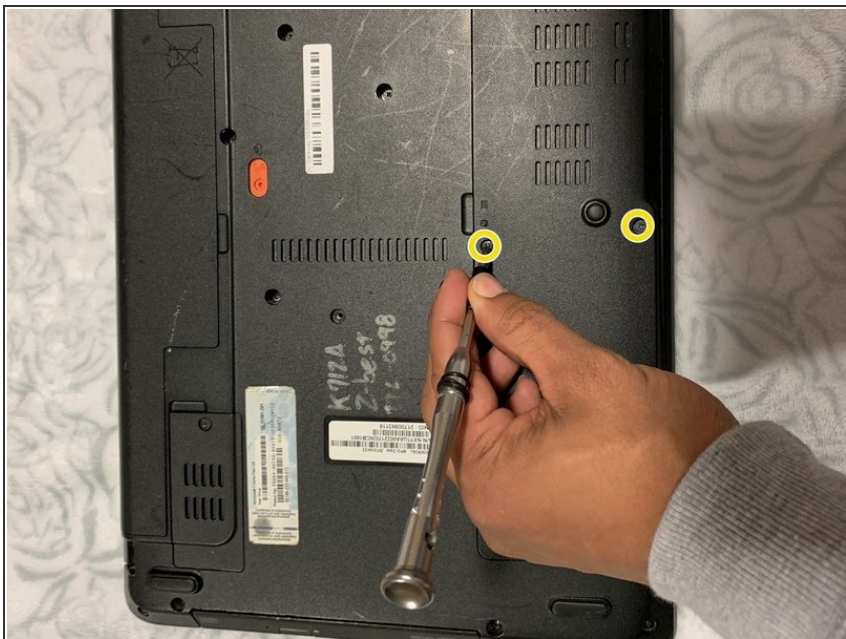
- Finally, remove the battery by detaching it from the laptop casing. Once removed, set the battery aside and insert the new battery.

Step 4 — RAM



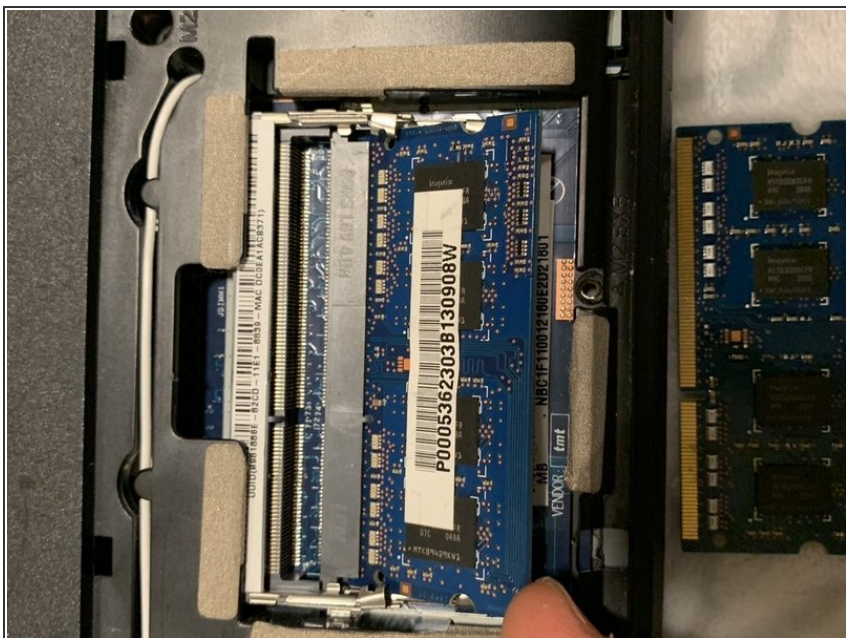
- Locate the casing that protects the RAM modules, wireless card, and hard drive.

Step 5



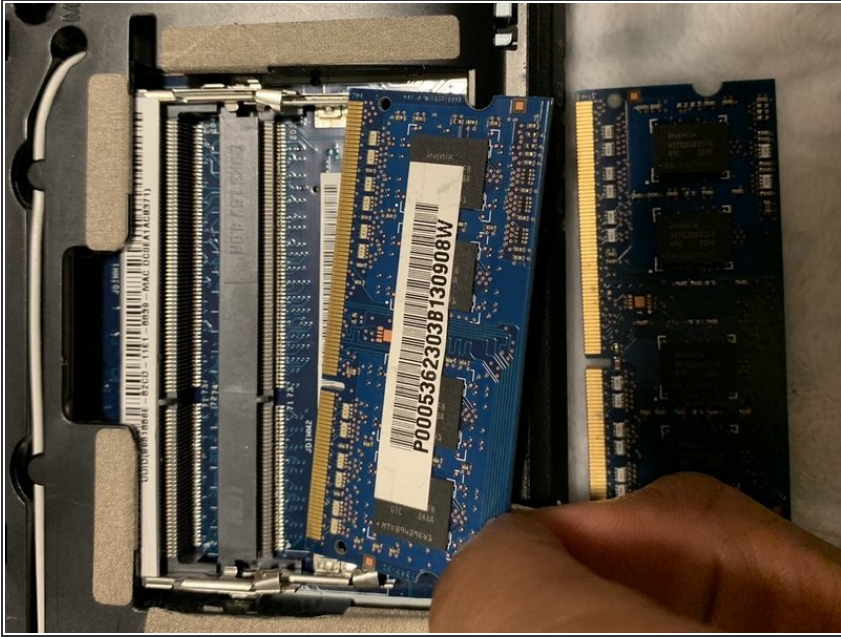
- With the PH1 head from the tool kit and the adjustable screwdriver, remove the 2 M3x5.0mm screws on the casing to get to the RAM modules.

Step 6



- On each RAM module there are two silver latches holding them in place
- Release the latches to be able to remove the RAM module.

Step 7



- Remove the RAM modules from their respected slots.

To reassemble your device, please follow these instructions in reverse order.