



LG K30 Motherboard Replacement

This guide explains the processes necessary to replace the Motherboard for the LG K30 cell phone.

Written By: Vivek Kathrotiya



INTRODUCTION

Are you having boot loop issues? This is when your LG K30 device does not start normally to reach the Home or Locked Screen and remains frozen at the device's logo, Recovery Mode or a lit up screen.

This guide will show you the necessary steps to replace your motherboard. Please ensure your phone is turned completely before replacing your motherboard.



TOOLS:

- [Jimmy](#) (1)
 - [Metal Spudger](#) (1)
 - [Phillips #00 Screwdriver](#) (1)
-

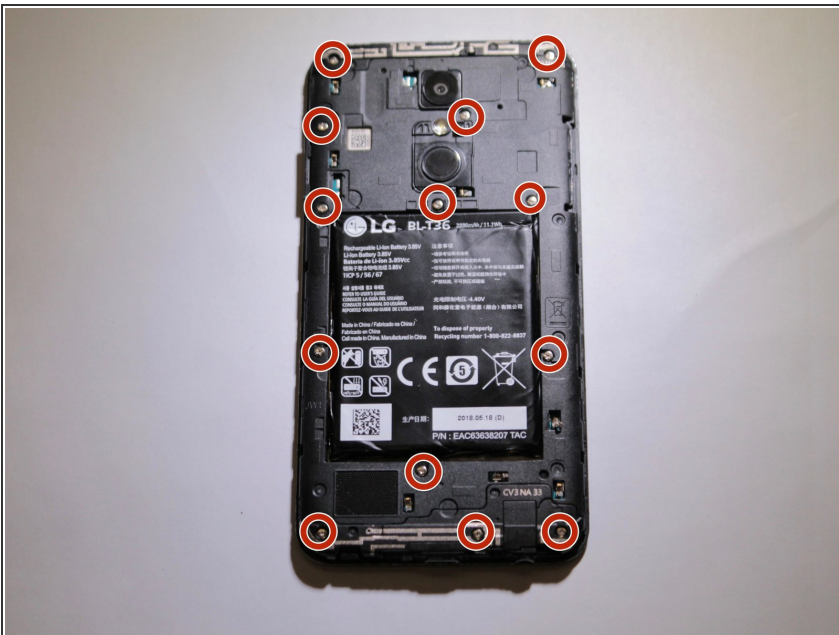
Step 1 — Battery



⚠ Before disassembling your LG K30, discharge the battery below 25%. A charged lithium-ion battery can catch fire and/or explode if accidentally punctured.

- Power off your Phone before beginning disassembly.
- Use the 'Jimmy' and 'Metal Spudger' to slowly pry open the outsides of the back case.

Step 2



- Remove the thirteen 3.4 mm Phillips #00 screws securing the midframe to the display assembly.

Step 3



- Use a metal spudger or plastic opening tool to pry open the outer cover.

Step 4



- Use the flat end of a spudger to detach the battery connector from the logic board.

Step 5



- Use a spudger to pry the battery from the phone.
- ⓘ There may be an adhesive on the back of the battery and the phone. Pry the battery gently to prevent puncture or damage.
- ⚠ Do not bend or puncture the battery.

Step 6 — Motherboard



- Use a spudger to carefully disconnect the front camera connector.
- Use a spudger to disconnect the display cable connector.

Step 7



- Remove the motherboard assembly from the display assembly with the a spudger or hand.

To reassemble your device, follow these instructions in reverse order.