



Rock Candy Remote Teardown

This guide will show you how to disassemble and reassemble your wii remote.

Written By: Giovanni Terrones



Step 1 — Getting your control



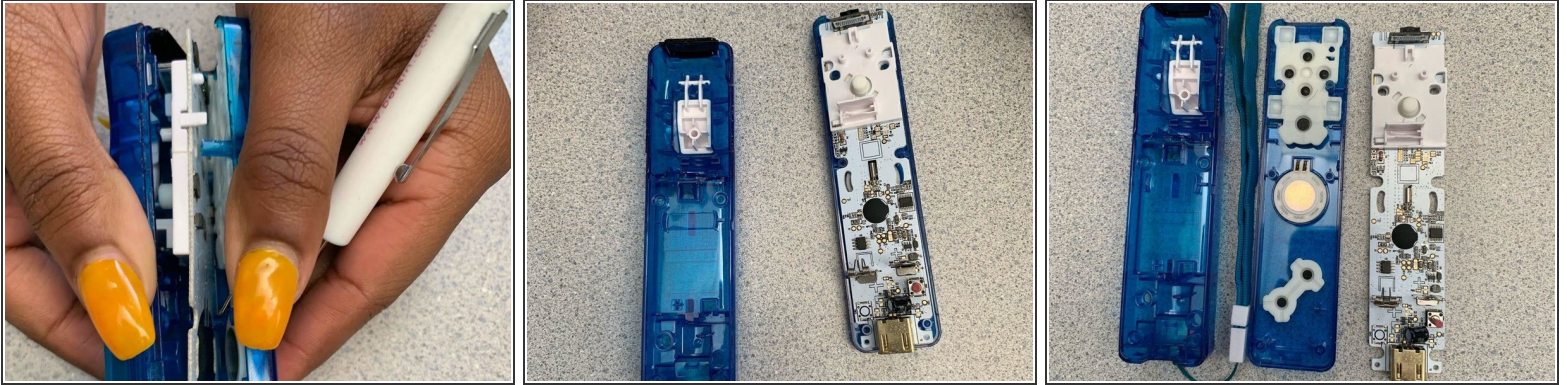
- To start disassembling this wii remote, turn it over and take the back off.

Step 2 — Unscrewing the screws



- Then take the screws out and pry off the back, you should have four screws, 2 from the top and 2 from the bottom.

Step 3 — Opening the control



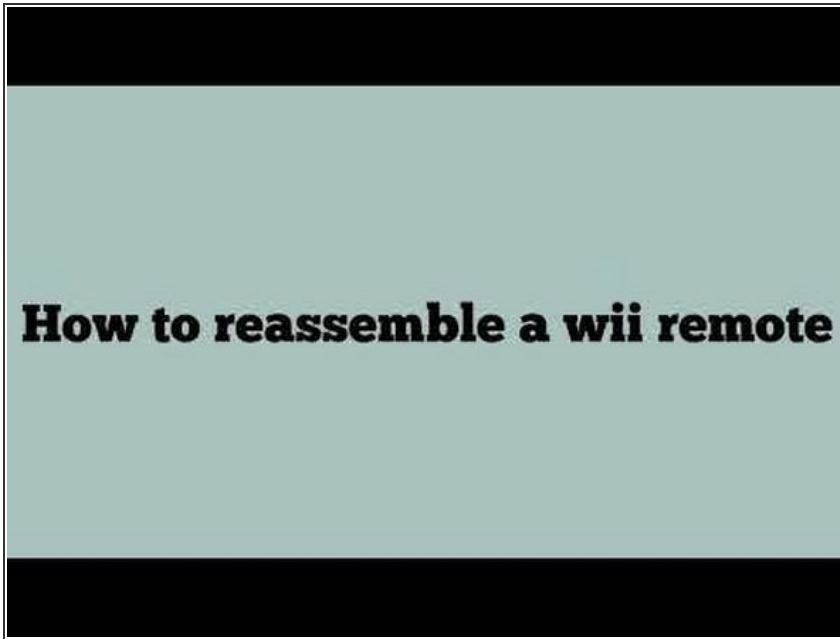
- You need to pry off the back (do this carefully) , open it in half it should look like this (second picture). Take the motherboard off slowly and carefully, you should have 3 parts (third picture)

Step 4 — Taking out the buttons



- From this part of the control take these pieces off carefully. You should have these pieces (second picture). After you should have something that looks like this (third picture). You have successfully disassembled your wii remote.

Step 5 — Reassembling the wii remote



- This will show you how to reassembling the wii remote if you are having trouble.

To reassemble your device, follow these instructions in reverse order.