



Dell XPS M1330 Keyboard Replacement

This guide will show you how to replace a keyboard on a Dell XPS M1330.

Written By: Kai Kapossy



INTRODUCTION

If your keyboard is unresponsive due to interior damage from liquids or dirt, or has been physically damaged, then use this guide to replace it. You will need a Phillips head #01 Screwdriver, a Flathead 3.0 Screwdriver, an iFixit opening tool, and tweezers. This process is a little more difficult than the previous, but you will have no problems in using this guide.



TOOLS:

- [Flathead Screwdriver](#) (1)
3.0mm
- [Phillips #1 Screwdriver](#) (1)
- [Tweezers](#) (1)
- [iFixit Opening Tools](#) (1)



PARTS:

- [Dell XPS M1330 Fan](#) (2)
- [Dell XPS M1330 Battery](#) (1)
- [Dell XPS M1330 Hard Drive](#) (1)
- [Dell XPS M1330 CPU](#) (1)
- [Dell XPS M1330 Keyboard](#) (1)

Step 1 — Battery



- Flip the laptop on its back, so that the underside is facing up.

Step 2



- Push and hold the slide button to the left and unlock the mechanism.

Step 3



- Lift the computer up and slowly pull the battery straight out from the device.

Step 4 — Hard Drive



- Flip the laptop on its back, so that the underside is facing up

Step 5



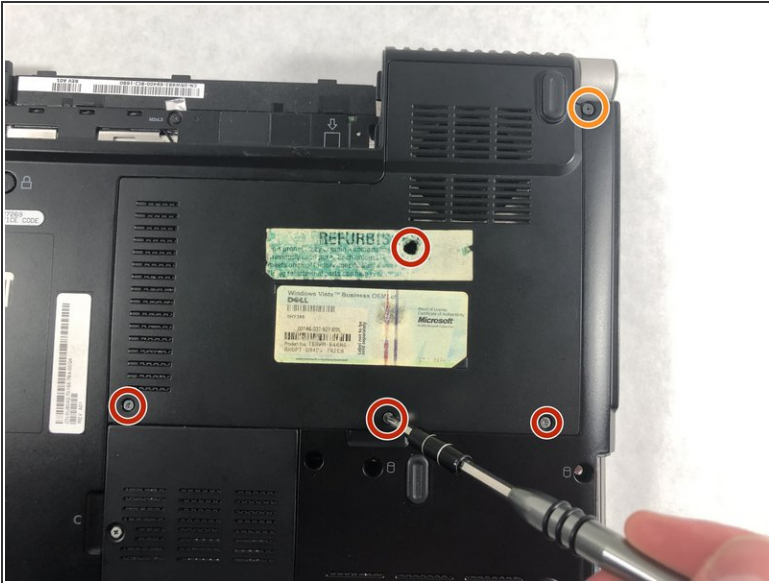
- Remove the four 3.0mm Phillips #1 screws securing the hard drive casing.

Step 6



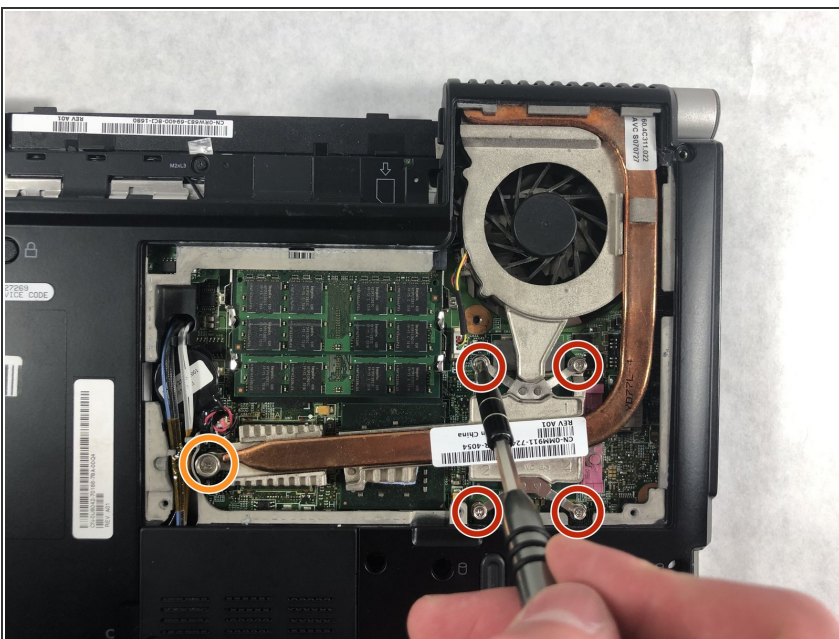
- Slide the hard drive away from the computer, slowly and carefully.

Step 7 — Fan



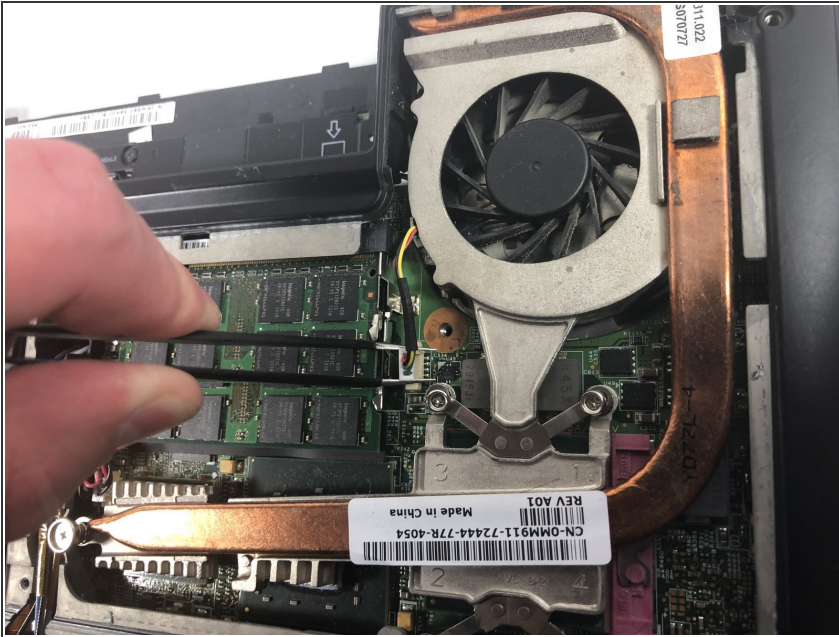
- Remove the four 5.0mm screws with a Phillips #1 screwdriver.
- Remove the one external 5.0mm screw with a Phillips #1 screwdriver.
- Remove the fan cover.


Step 8



- Remove the four 0.1mm screws using the Phillips #1 screwdriver.
- Remove the one thicker 0.1 mm screw using the Phillips #1 screwdriver.

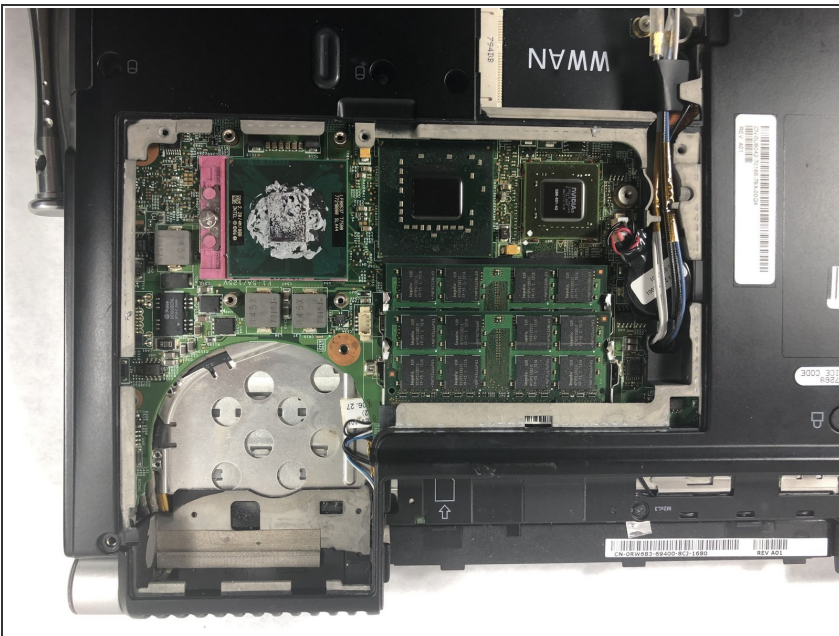
Step 9



 Be sure to carefully remove the wires as they are fragile and can rip easily.

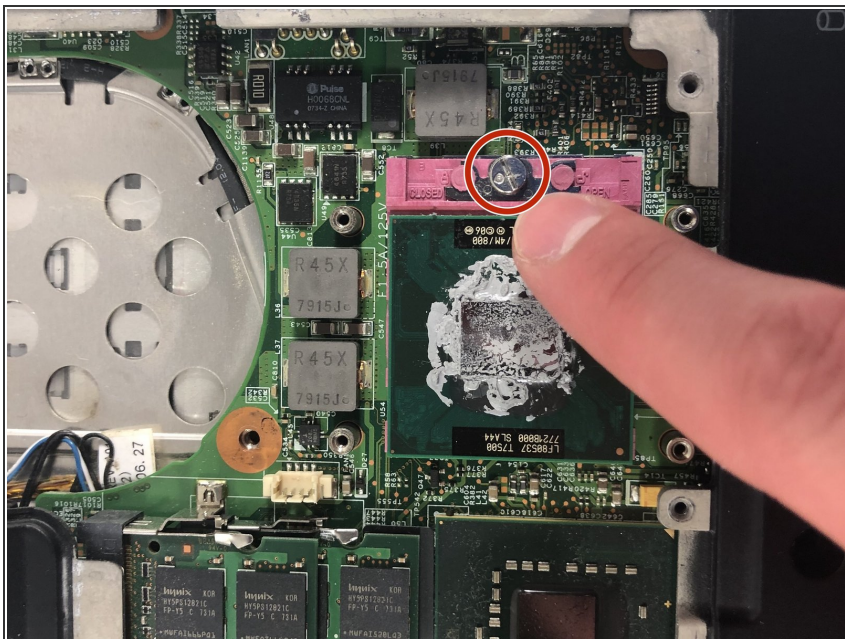
- Remove the wire bay near the fan.
- Use the long nosed tweezers to carefully handle the white plastic piece that holds the wires together.
- Gently pull upward while moving your hand side to side so the plastic holder will detach.

Step 10



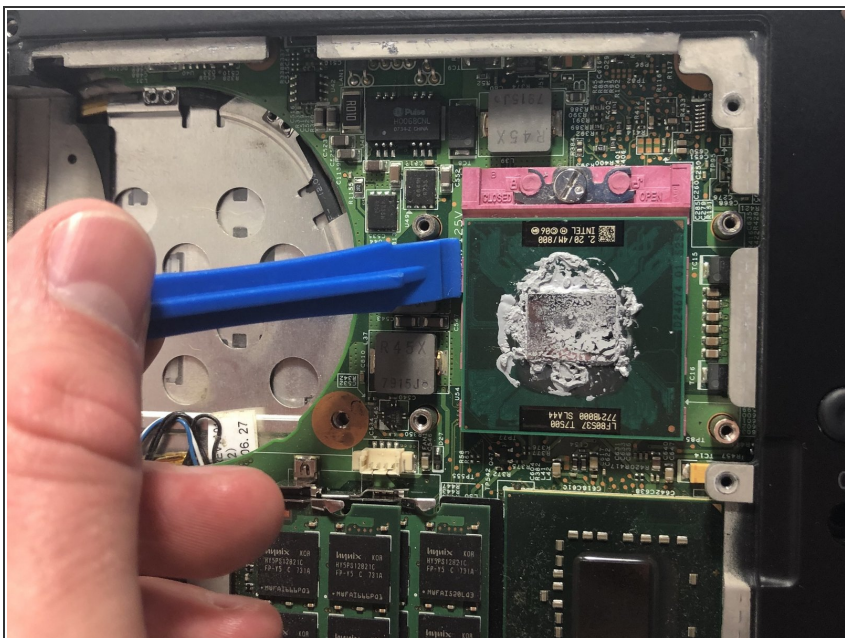
- Gently remove the fan and its attachments from the bay.

Step 11 — CPU



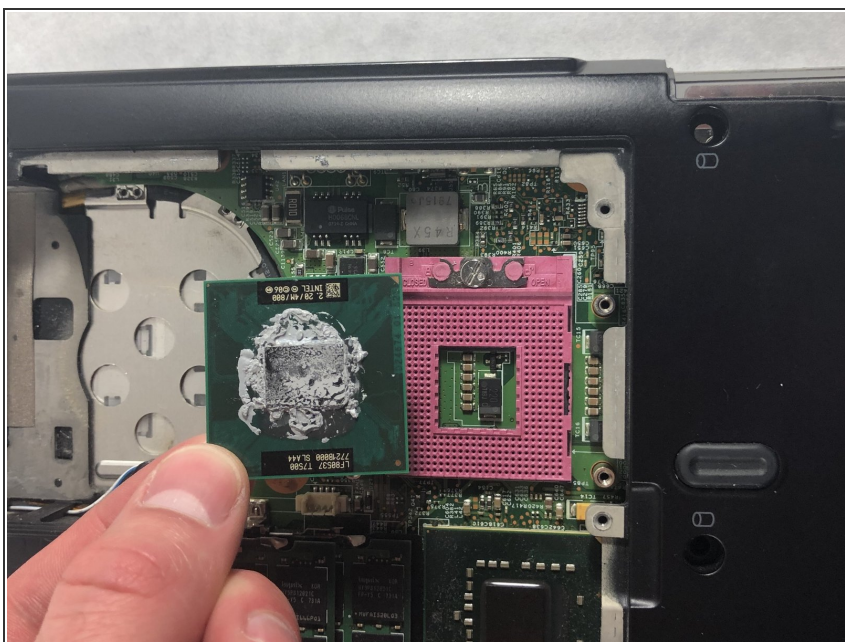
- Using the flathead screwdriver, turn the one screw counterclockwise to loosen the CPU, but do not remove the screw.

Step 12



- Using the iFixit opening tool, prop up the CPU.

Step 13



- Carefully lift the CPU away from its housing.

Step 14 — Keyboard



- Unscrew the 5.0mm Phillips #1 screw from the wireless door cover.
- Pull straight up on the wireless door.

Step 15



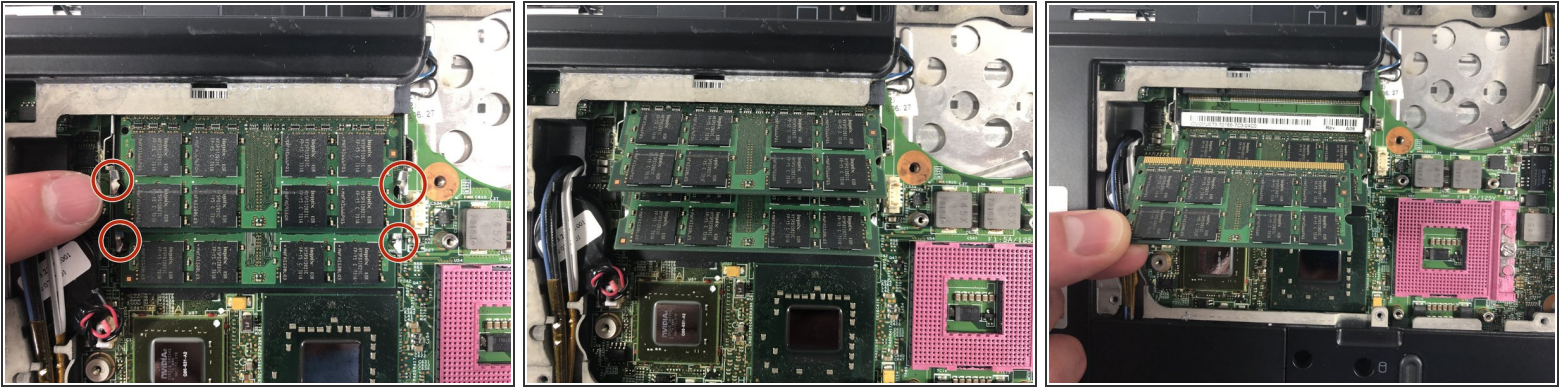
- Unscrew the 3.0mm Phillips #1 screw from the wireless card.

Step 16



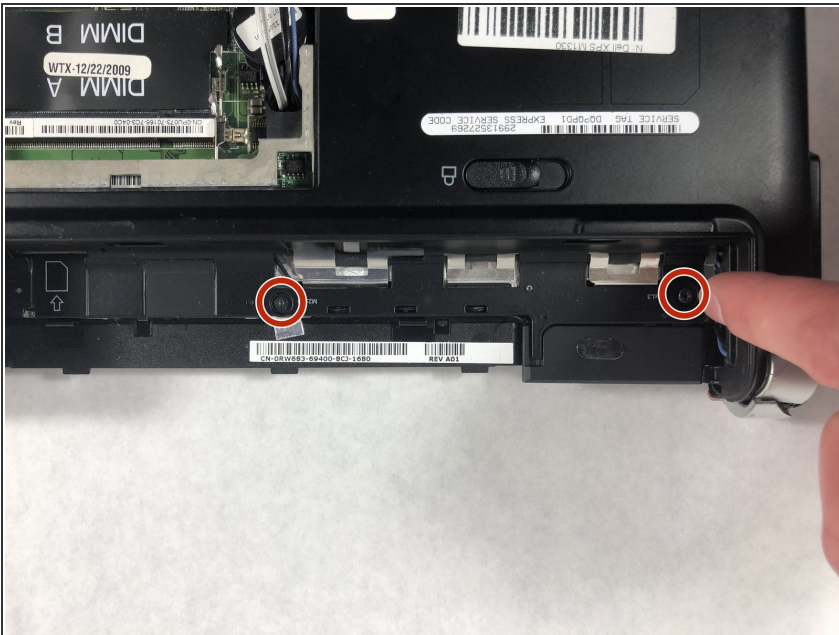
- Slide the card to the left and up to remove it.

Step 17



- Separate the two clips on both sides of the memory sticks.
- The memory stick will lift up.
- Gently pull the memory stick up and out of its holder.
- Repeat these same steps for the second memory stick below.

Step 18



- Remove the two 2.5mm Phillips #1 screws in the battery housing port.

Step 19



- Flip the laptop back over so the cover is on top.

Step 20




- Carefully open the screen, so it is facing toward yourself.
- Flatten out the screen as much as possible.

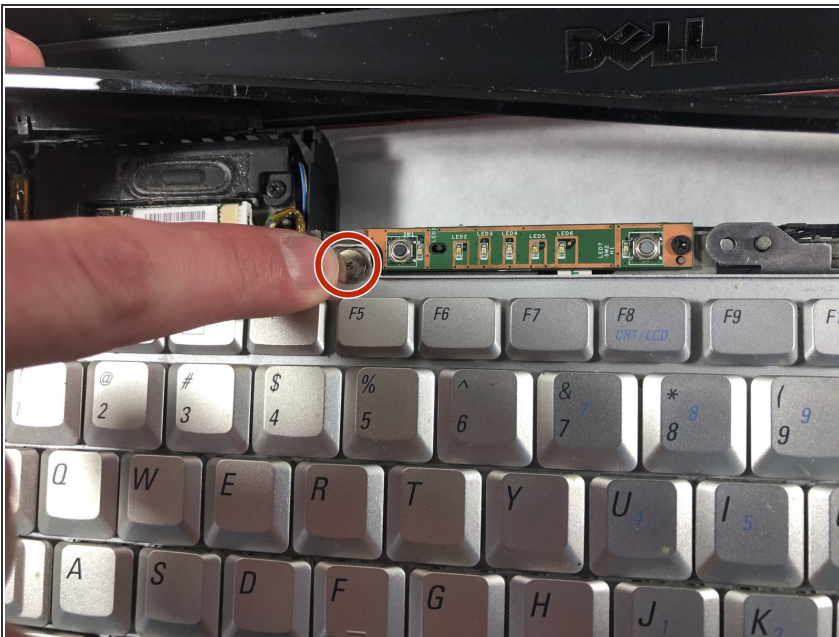
Step 21



- Carefully lift the computer, so you can get a good grip by the hinges.
- Carefully lift and remove the central control media button cover from the base.

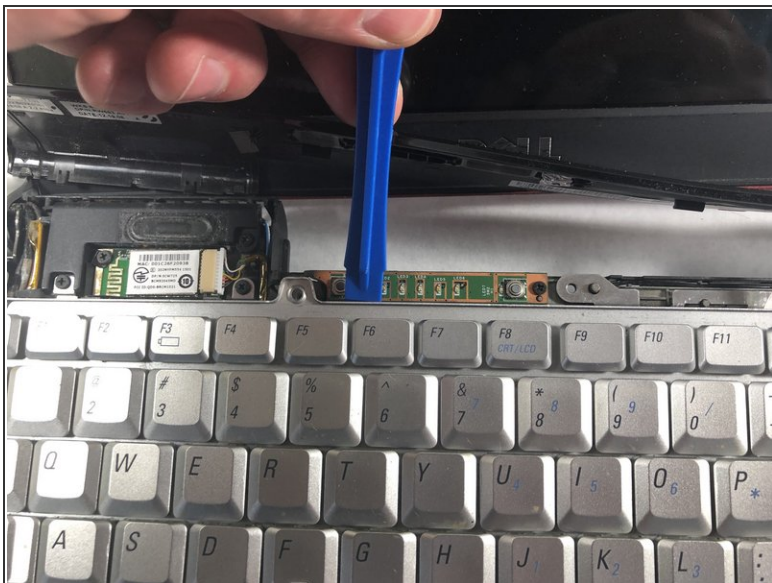
 This piece snaps out of its constraints. Be slow and controlled, so you don't break a snap. There is also a cable attached underneath.

Step 22



- Use the Phillips #1 screwdriver to remove the two 3.0mm screws at the top of the keyboard.

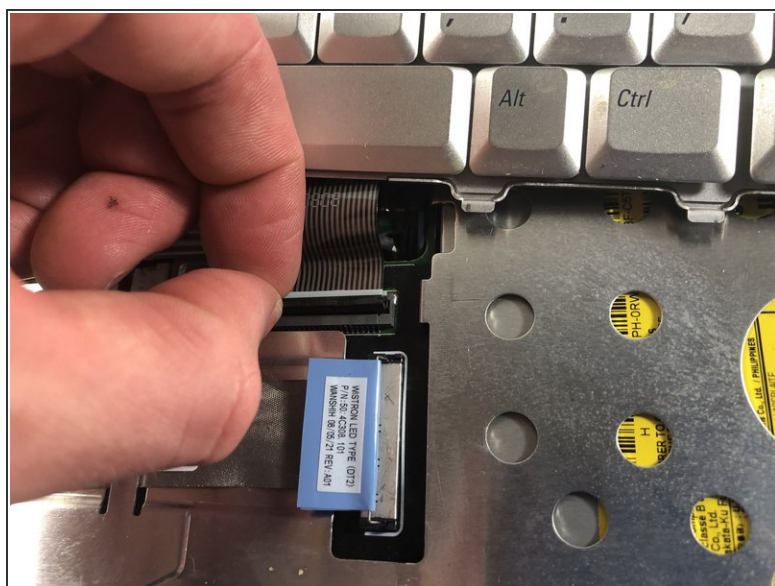
Step 23



⚠ When removing this piece lift slowly as there is a cord underneath that connects to the keyboard.

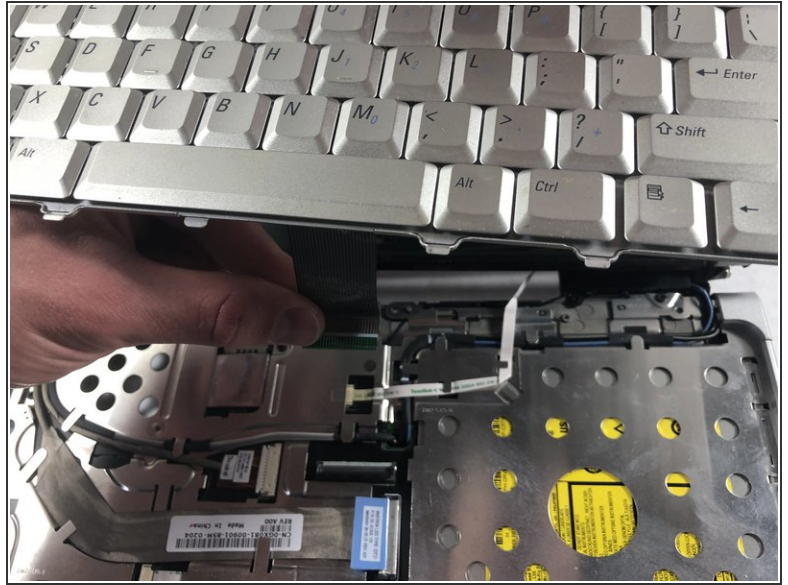
- Carefully lift the keyboard up and toward the front screen.

Step 24



- Lift the keyboard latch toward yourself.

Step 25



- Gently pull the keyboard cable away from your body.
- Detach the keyboard cable.

To reassemble your device, follow these instructions in reverse order.