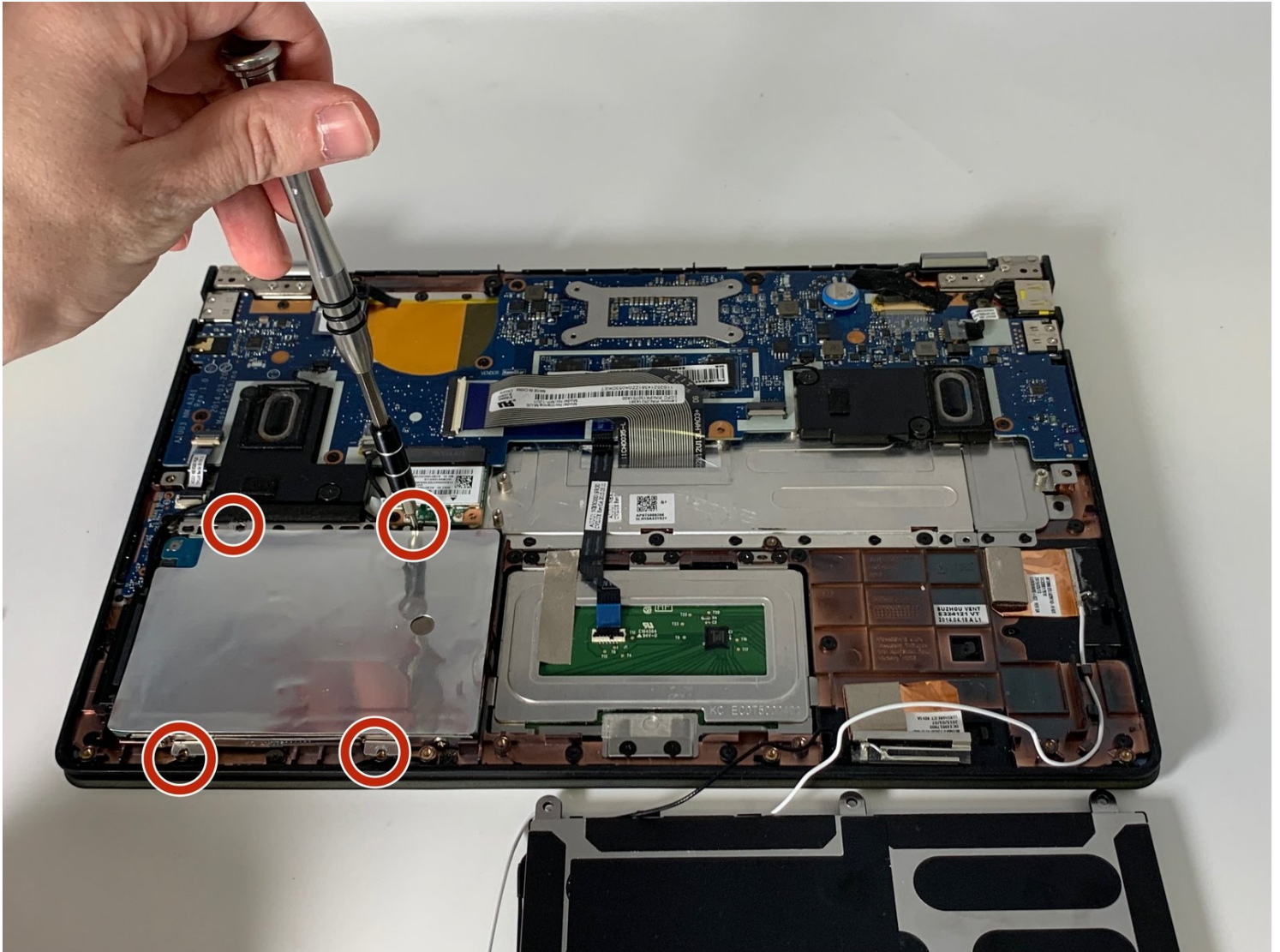




# Lenovo Yoga 2 11" 20428 Hard Drive Replacement

This guide will properly show how to remove and...

Written By: Joshua Thomas Tyler



# INTRODUCTION

This guide will properly show how to remove and replace the hard drive component for a Lenovo Yoga 2 11" 20428. When removing the hard drive be sure to have the laptop turned off and the battery disconnected.

---

## TOOLS:

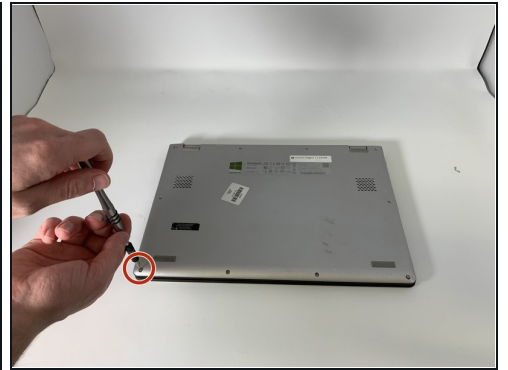
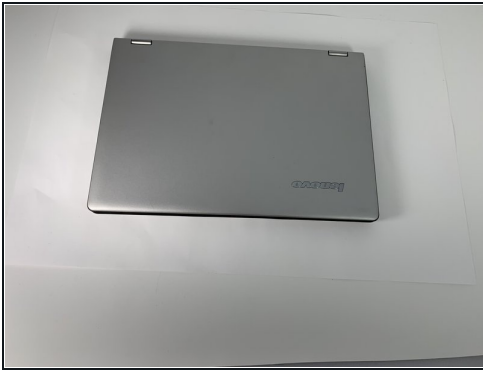
T4 Torx Screwdriver (1)  
Phillips #00 Screwdriver (1)

## PARTS:

Crucial P3 NVMe PCIe M.2 2280SS SSD (1)  
Crucial P3 Plus NVMe PCIe M.2 2280SS SSD (1)  
Crucial P5 Plus PCIe M.2 2280SS SSD (1)  
16200616 - Western Digital 500GB 5400RPM 6G 5mm SSHD (HYBRID) with 16GB NAND (WD5000M22K-24Z1LT0 MJ500Sh-2) (1)

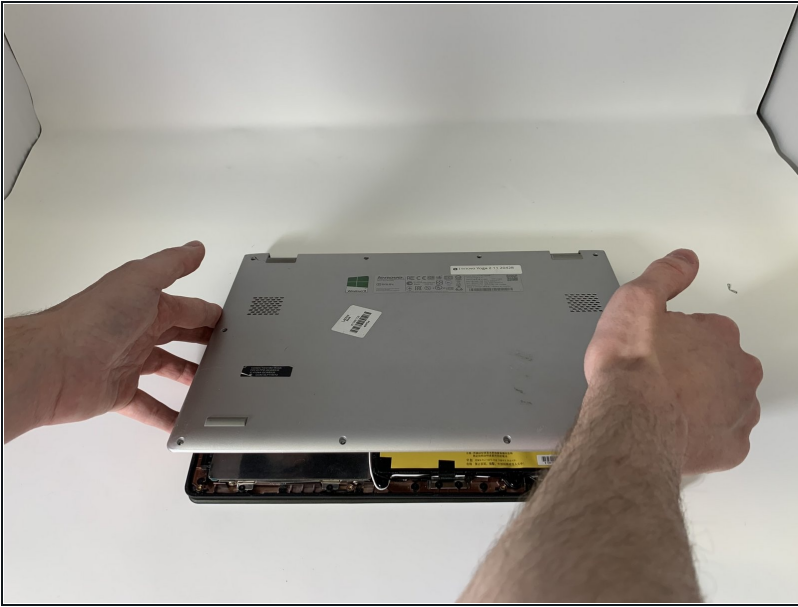
---

## Step 1 — Back Panel



- Flip the computer over so the bottom is facing up.
- Remove the **ten** 6mm screws with a T5 Torx security screwdriver.

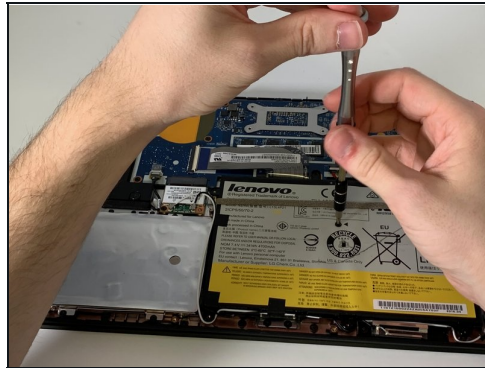
## Step 2



- Carefully remove the back panel by gently separating the panel from front to back.

⚠ Take care not to pull any wires or crack the outer shell.

## Step 3 — Battery



- Use the Phillips #000 screwdriver to remove the **six** 3.3 mm screws around the perimeter of the battery.
- Use the Phillips #000 screwdriver to remove the **single** 6.75 mm screw from the center of the battery.

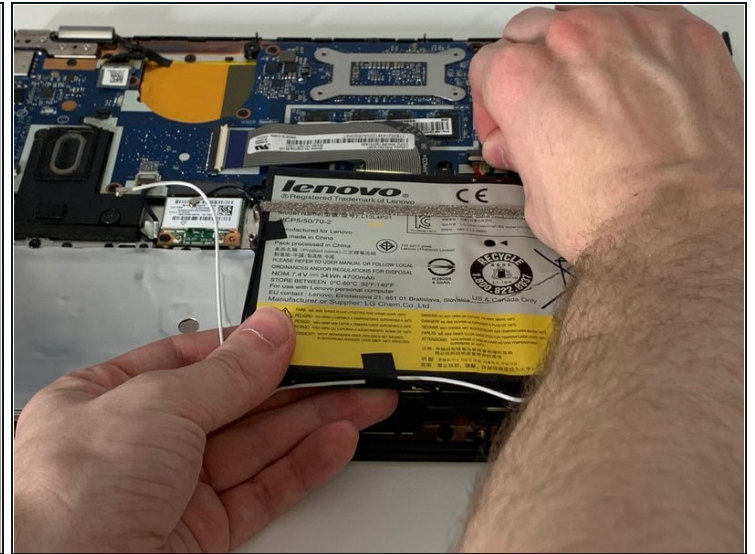
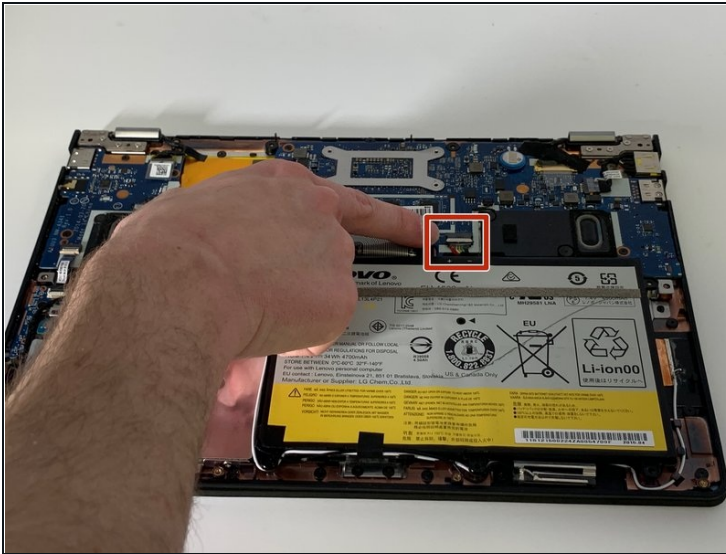


## Step 4



- Gently remove the **three** pieces of tape securing the Bluetooth/Wi-Fi antenna.

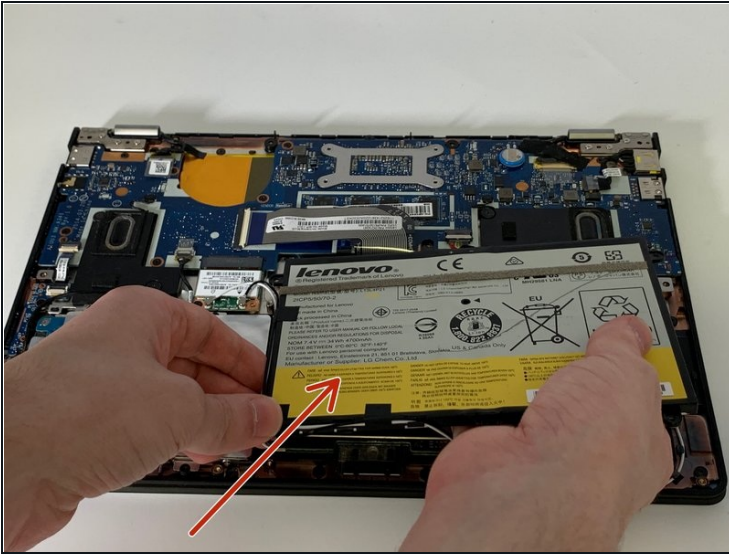
## Step 5



- Grip the base of the connector with your fingers or pliers, and gently pull the connector straight back towards you to remove it.

⚠ If possible, do not pull the connector out by the wires, as this can damage the connector.

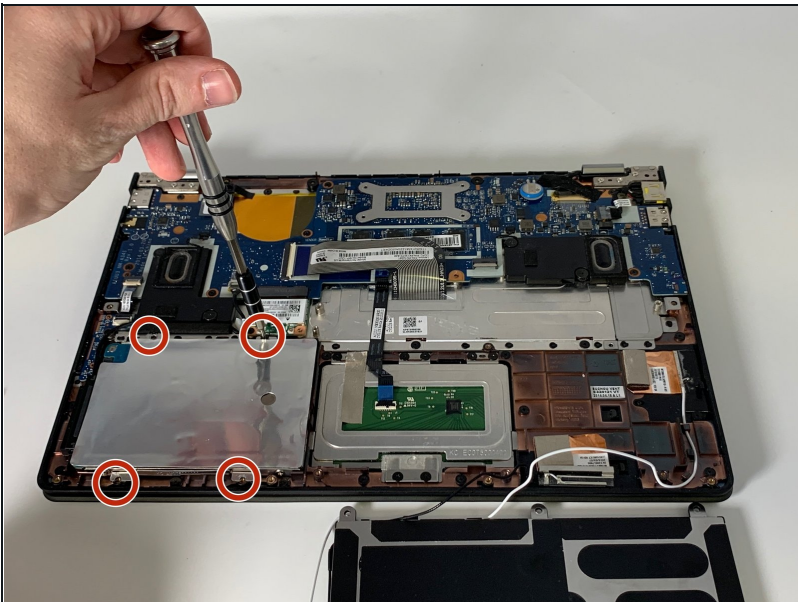
## Step 6



- Carefully remove the battery from the laptop.

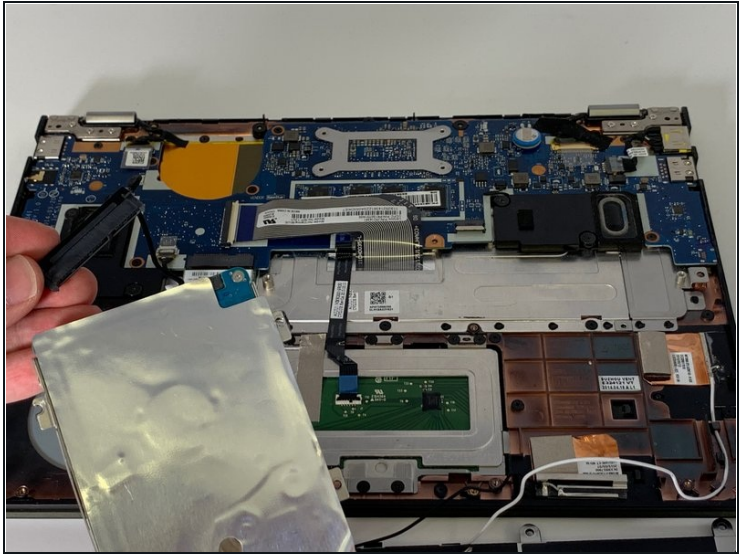
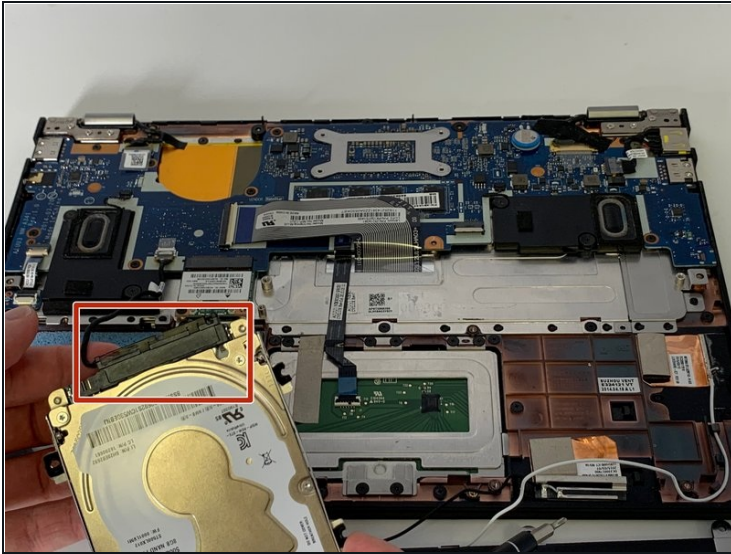
⚠ Take care not to pull out the Bluetooth antenna while removing the battery.

## Step 7 — Hard Drive



- Use the Phillips #000 screwdriver to remove the **four** 3.3 mm screws securing the hard drive to the panel.

## Step 8



- Lift the hard drive up, turn it over, and remove the connection.

To reassemble your device, follow these instructions in reverse order.