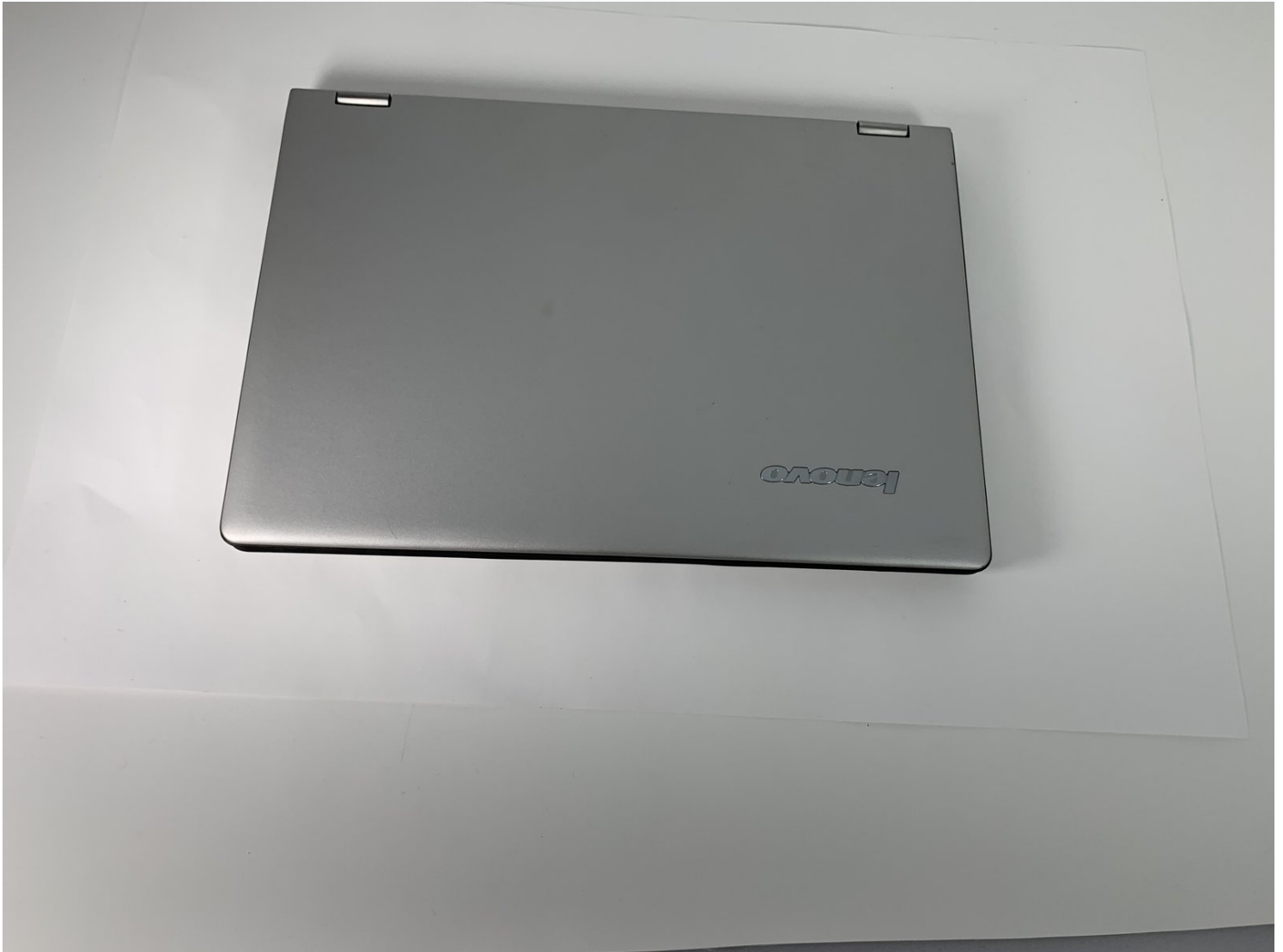




Lenovo Yoga 2 11" 20428 Back Panel Replacement

This guide shows how to properly remove the...

Written By: Yvonne Gillespie



INTRODUCTION

This guide shows how to properly remove the back panel in order to replace the panel or access other parts of the computer for repair. This is removal is the way to gain access to the inner workings of the Lenovo Yoga 2 11" to test components or remove/replace components.

TOOLS:

T4 Torx Screwdriver (1)

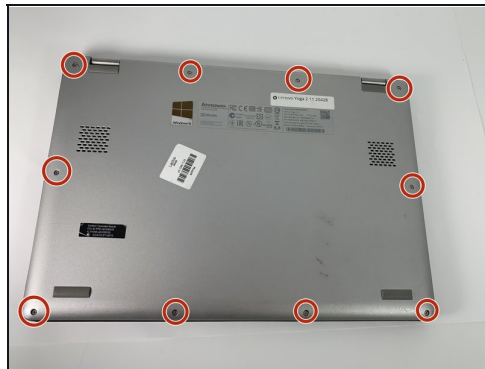
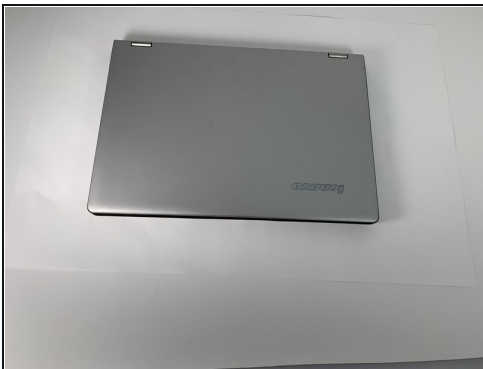
PARTS:

90204920 - Lenovo Yoga 2 11" Lower Case (Orange) (1)

90204921 - Lenovo Yoga 2 11" Lower Case (Silver) (1)

90204922 - Lenovo Yoga 2 11" Lower Case (Black) (1)

Step 1 — Back Panel



- Flip the computer over so the bottom is facing up.
- Remove the **ten** 6mm screws with a T5 Torx security screwdriver.

Step 2



- Carefully remove the back panel by gently separating the panel from front to back.

⚠ Take care not to pull any wires or crack the outer shell.

To reassemble your device, follow these instructions in reverse order.