



Philips BTM 2310/12 CD tray randomly opens / closes

A defective pushbutton on the Philips BTM 2310/12 causes random open/close of the CD tray

Written By: Thomas Widmaier



INTRODUCTION

Looking for answers to the problem of a randomly opening CD-tray on Philips equipment, I also tried the several times described fix on the open/close switch. But the switch was fine. So digging deeper I discovered the interesting way of encoding different pushbuttons used in this device and the problems that arise with it.

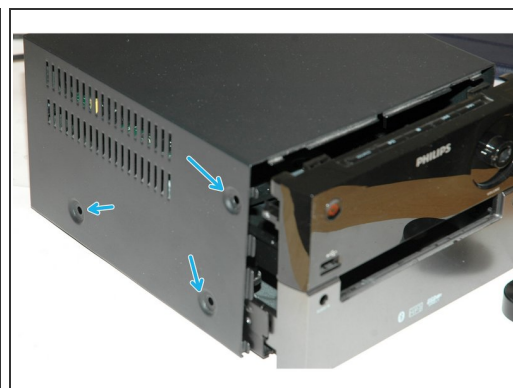
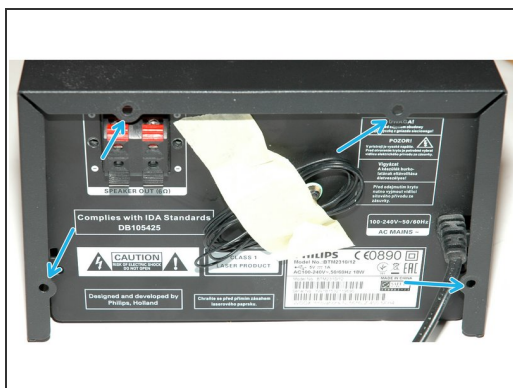
https://www.philips.de/c-p/BTM2310_12/mi...



TOOLS:

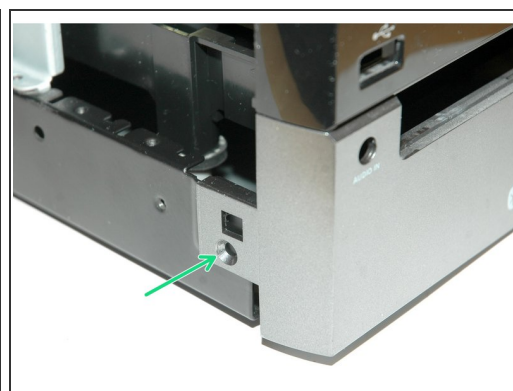
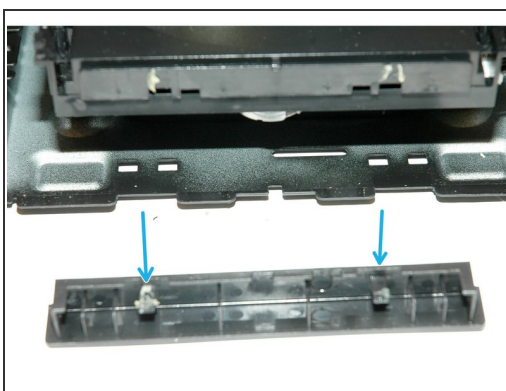
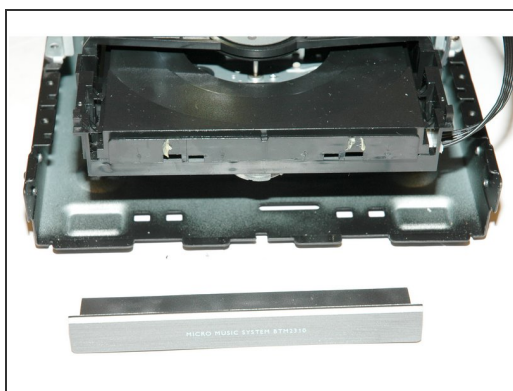
- [Phillips #00 Screwdriver](#) (1)
 - [Soldering Iron](#) (1)
 - [Desoldering Braid](#) (1)
-

Step 1 — Open



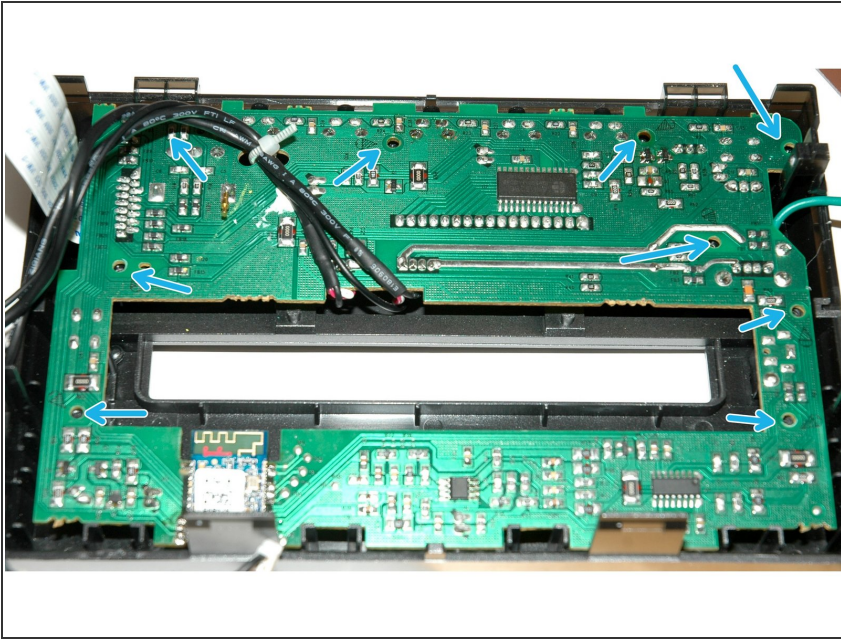
- Remove screws

Step 2 — Open



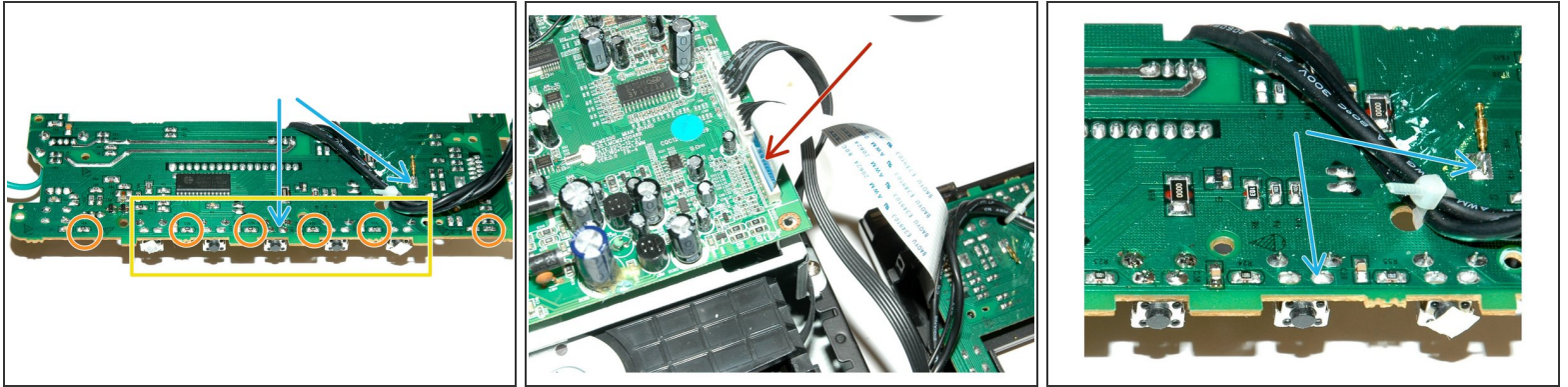
- Open tray and unclip front of tray
- There are two hooks and some glue
- Close tray
- Remove screws for front
- Remove front

Step 3 — Remove PCB



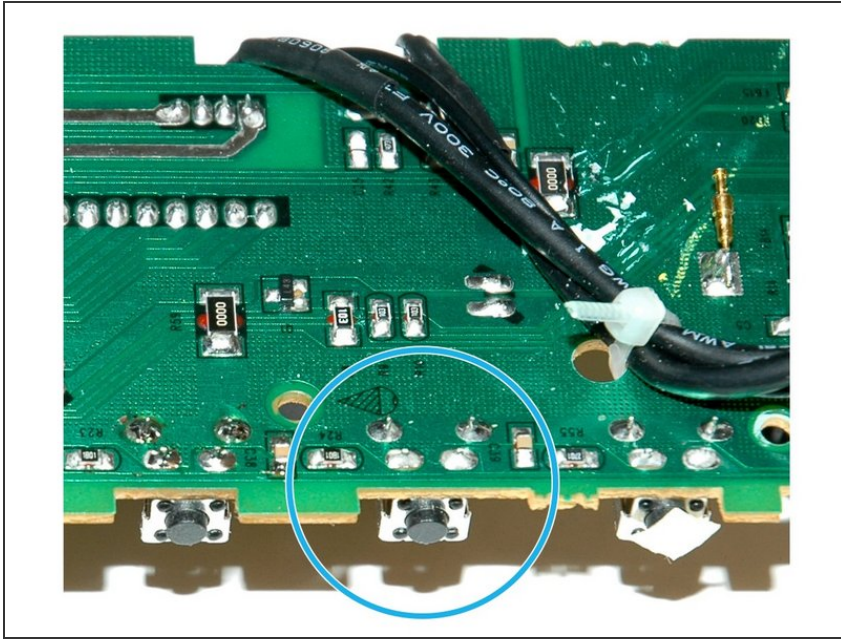
- Remove screws
- Remove PCB from front

Step 4 — Measure



- This is the section of the pushbuttons. Each of them, when pressed, is shorting to ground one connection in a resistor chain. This basically is a variable resistor to the microcontroller on the other end of the ribbon cable. The microcontroller measures the resistance and decides which value means which keypress.
- The problem comes when there is another resistance appearing due to dirt or other reasons. Then the whole circuit can behave as if random keys are pressed.
- Remove ribbon cable
- Measure resistance to ground at this point. Should be OL (open)
- If not, measure resistance across pushbuttons. Search for lowest resistance. This is the place you want to replace the pushbutton
- The resistances (in the circles) from left to right are 1k, 1k2, 1k8, 1k8, 2k7, 4k7

Step 5 — Remove/replace/clean pushbutton



- Remove pushbutton and either clean it, or replace it.
- I did not find a way to open and reseal a button, so instead ordered replacement buttons. They are very cheap.

To reassemble your device, follow these instructions in reverse order.