



Milwaukee M12 2407-20 Gear Case Assembly Replacement

Guide to replacing the gear case assembly on the Milwaukee M12 2407-20.

Written By: Allison Schieber



INTRODUCTION

This guide will walk through the steps to replace the gear case assembly on the Milwaukee M12 2407-20.



TOOLS:

- [T10 Torx Screwdriver](#) (1)
 - [Phillips #2 Screwdriver](#) (1)
-

Step 1 — Outer Casing



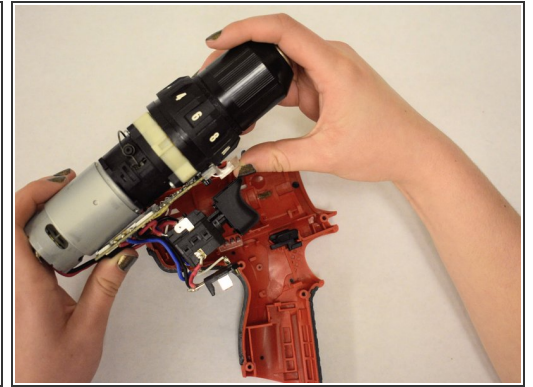
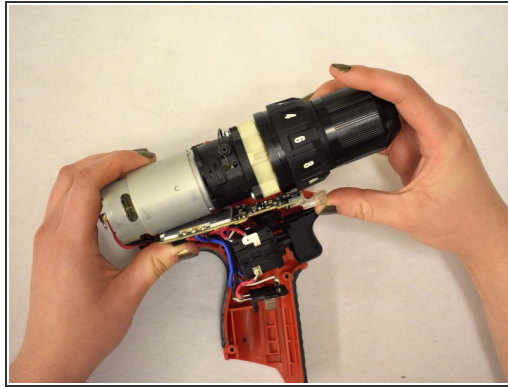
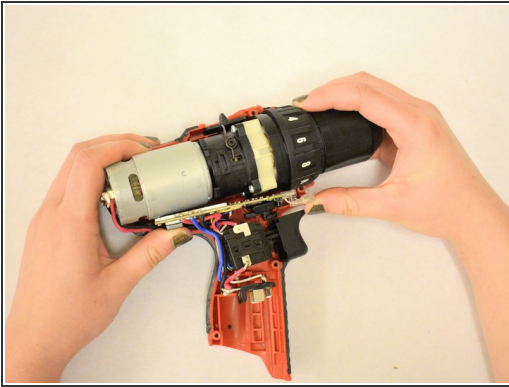
- Remove each of the seven 14mm Pan Hd. T-10 ST screws on one side of the housing assembly using the T10 screwdriver.

Step 2



- Remove metal clip located at the base of the drill, where the battery is to be inserted.
- ⓘ You may need to use a spudger if the clip is too difficult to remove with your fingers.

Step 3 — Gear Case Assembly



- Use both hands to remove the gear case assembly from the casing.
- Set the assembly aside.

Step 4



- Orient the assembly so that it is horizontal.
- Using your left hand, twist the motor assembly to the left.
- Pull the motor assembly from the gear case assembly. Set the motor assembly aside.

Step 5



- Use a screwdriver to pop the speed selector lever off to gain access to the screws underneath it.

Step 6



- Use a screwdriver to remove each of the four 6mm screws holding the gear case assembly in place.

Step 7



- Remove the gear case assembly from the keyless chuck, taking care not to allow the gears inside the unit to shift or become dislodged.
- ⓘ Use your finger to hold the gear plate in place when you remove the assembly. This will keep the gears from falling out.

To reassemble your device, follow these instructions in reverse order.