



Milwaukee M12 2407-20 Shuttle Spring Plate Replacement

Guide to replacing the shuttle spring plate on the Milwaukee M12 2407-20.

Written By: Allison Schieber



INTRODUCTION

This guide will walk through the steps to replace the shuttle spring plate on the Milwaukee M12 2407-20.



TOOLS:

- [T10 Torx Screwdriver](#) (1)
-

Step 1 — Outer Casing



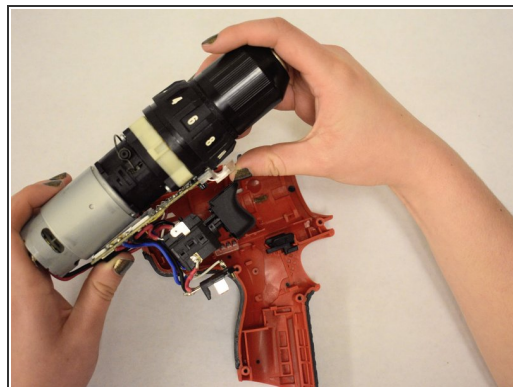
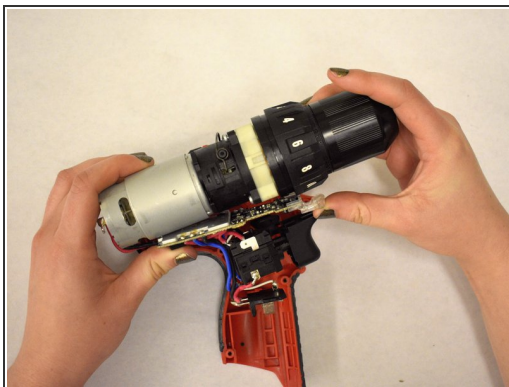
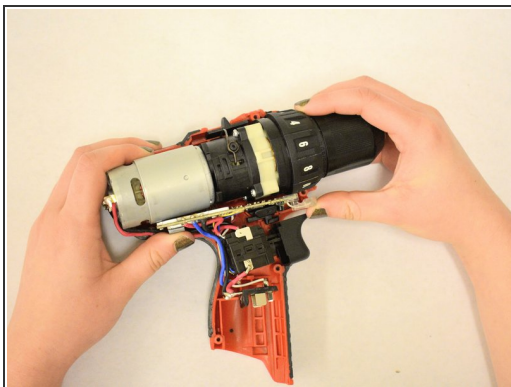
- Remove each of the seven 14mm Pan Hd. T-10 ST screws on one side of the housing assembly using the T10 screwdriver.

Step 2



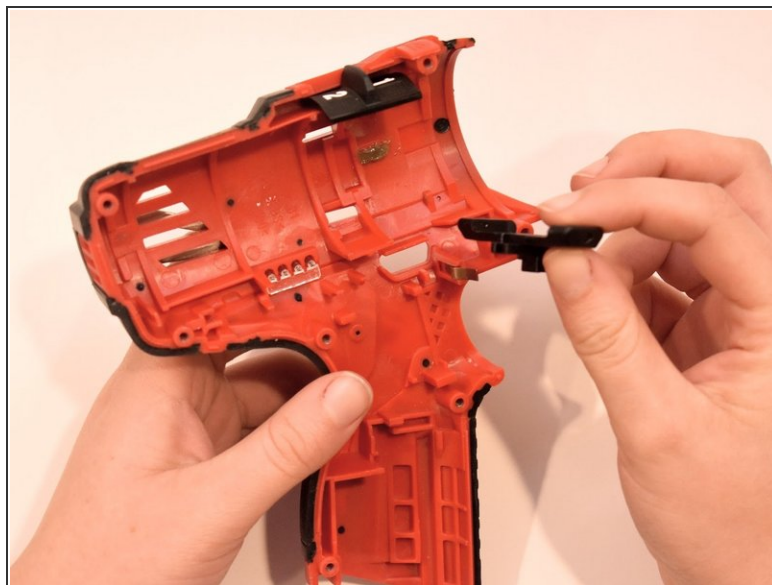
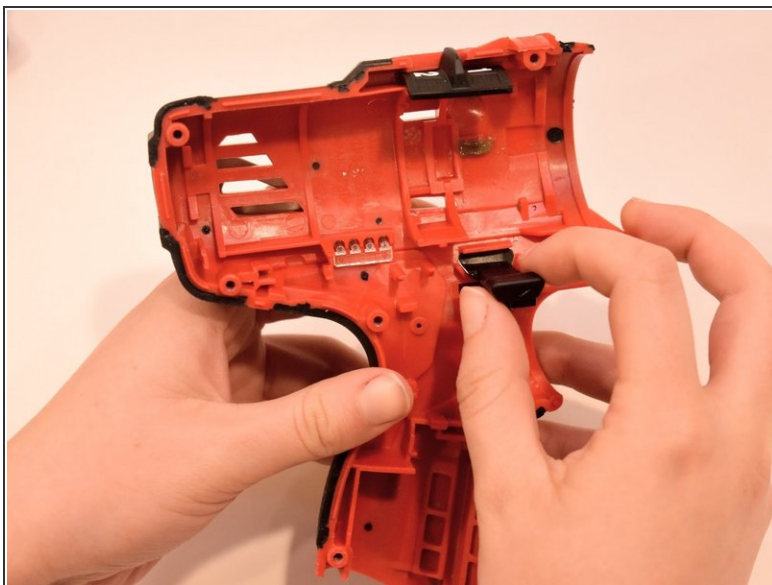
- Remove metal clip located at the base of the drill, where the battery is to be inserted.
- ⓘ You may need to use a spudger if the clip is too difficult to remove with your fingers.

Step 3 — Shuttle Spring Plate



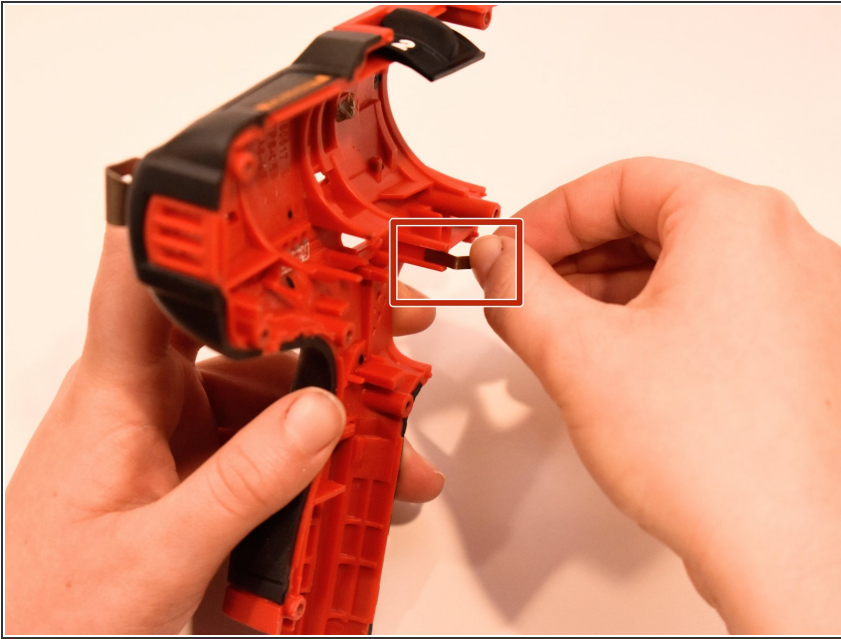
- Use both hands to lift and remove the gear case assembly from the shell casing.
- Set the gear case assembly aside.

Step 4



- Remove the forward/reversing shuttle to gain access to the spring plate.

Step 5



- Remove the spring plate and insert replacement spring plate.

To reassemble your device, follow these instructions in reverse order.