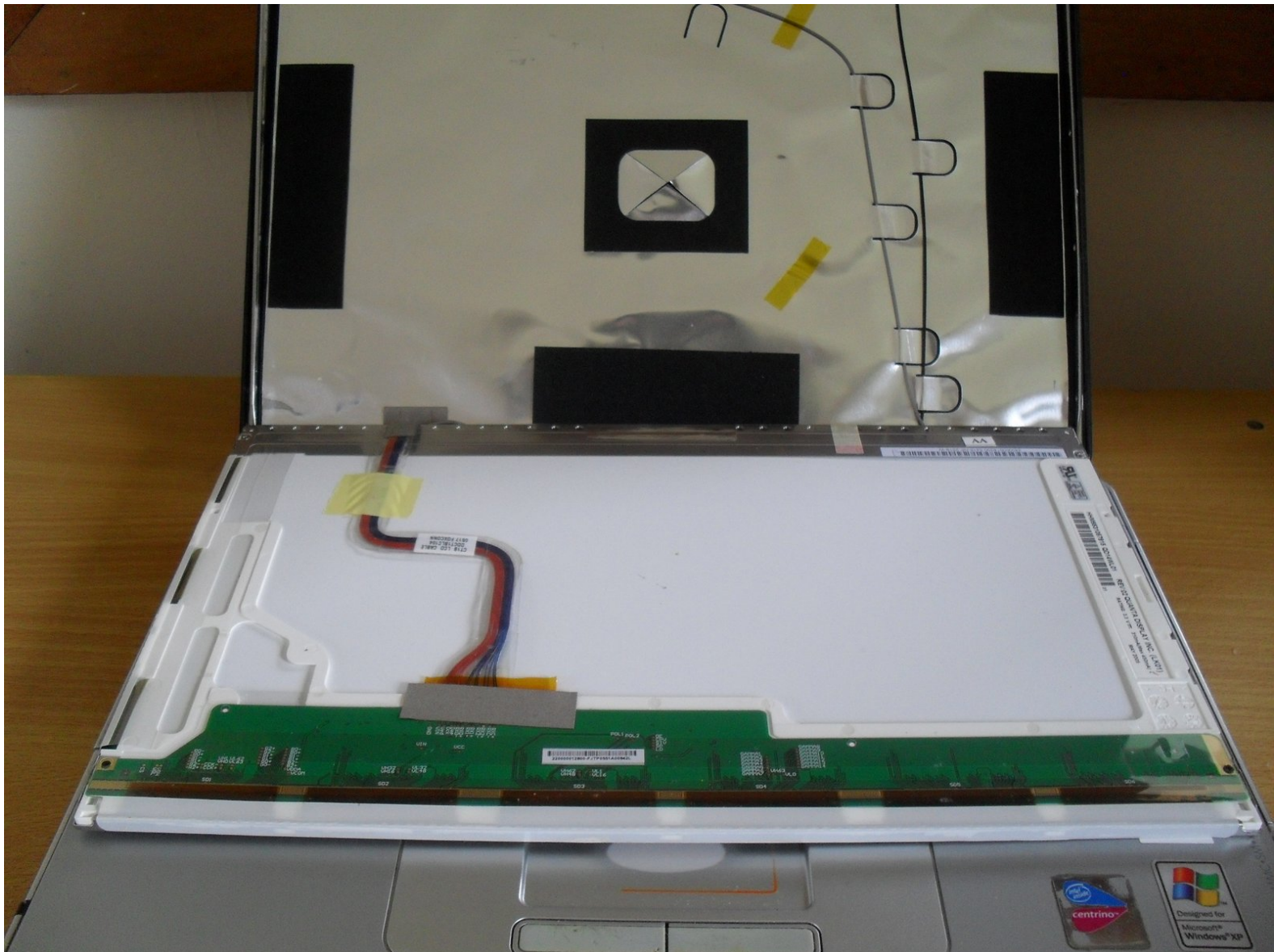




Compaq Presario v2000 Display Panel Replacement

How to remove and replace the LCD display panel

Written By: Andrew



INTRODUCTION

How to remove and replace the LCD display panel



TOOLS:

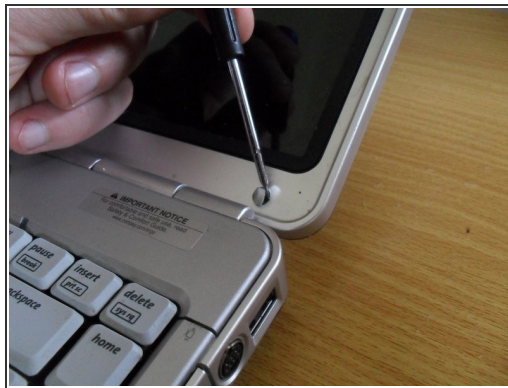
- [Phillips #1 Screwdriver](#) (1)
 - [Spudger](#) (1)
-

Step 1 — Display Panel



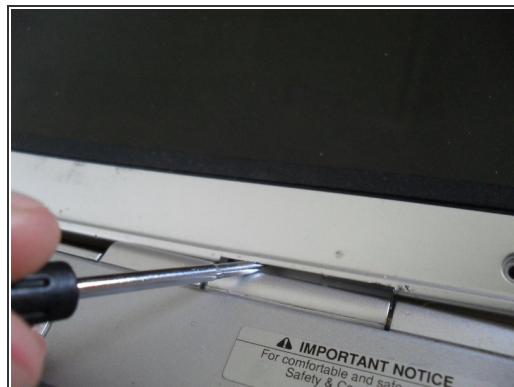
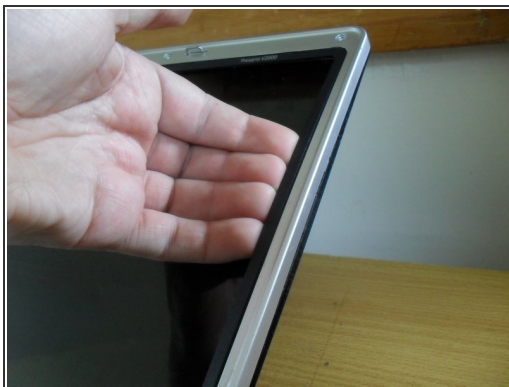
- ✦ Remove the battery before starting working on the laptop

Step 2



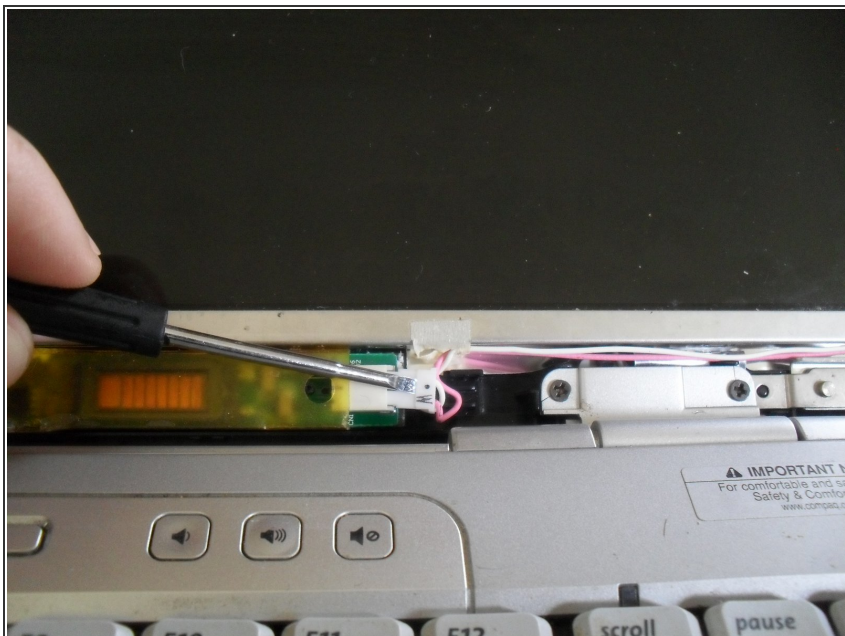
- There are 6 screws holding on the display bezel, hidden behind screw covers
- Remove the screw covers with a spudger or small flat blade screwdriver
- Remove the screws with a Phillips #1 screwdriver

Step 3



- Use your fingers to pry off the bezel at the top and sides first
- ⚠ Don't use anything hard and sharp as you may damage the panel
- You may need to use a spudger or flat blade screwdriver at the bottom edge around the hinges

Step 4



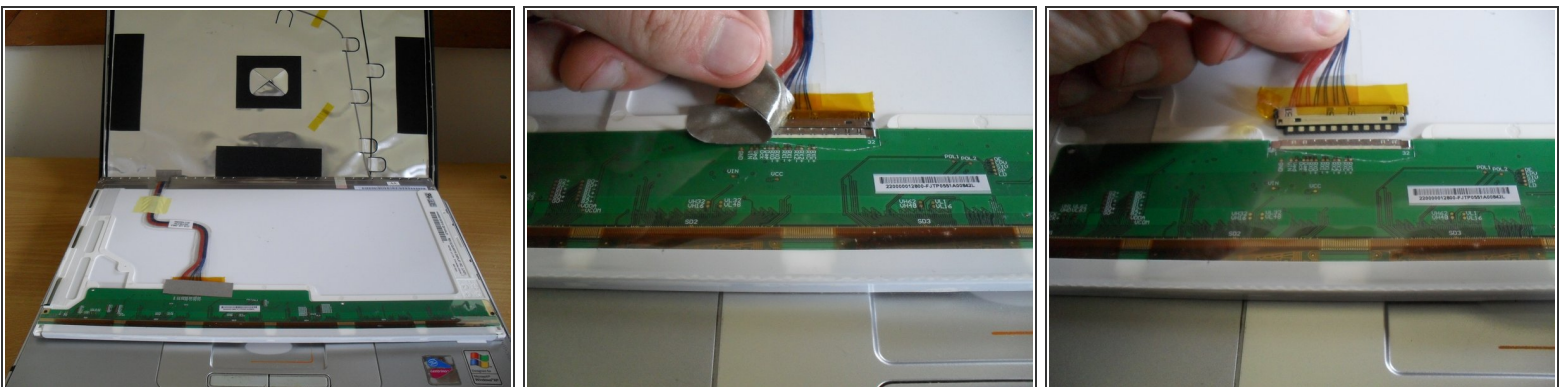
- Remove the backlight inverter cable using a spudger or flat blade screwdriver

Step 5



- Remove the two side screws at the top of the panel first
 - Then remove the two side screws at the bottom. It may be necessary to angle the display away from the back cover to reach these well
- ⚠ Hold on to the display when removing the last screw, there is still a cable on the back to remove

Step 6



- Lay the panel down on the keyboard
- Remove the tape covering the display cable connector
- Remove the display cable from the panel

To reassemble your device, follow these instructions in reverse order.