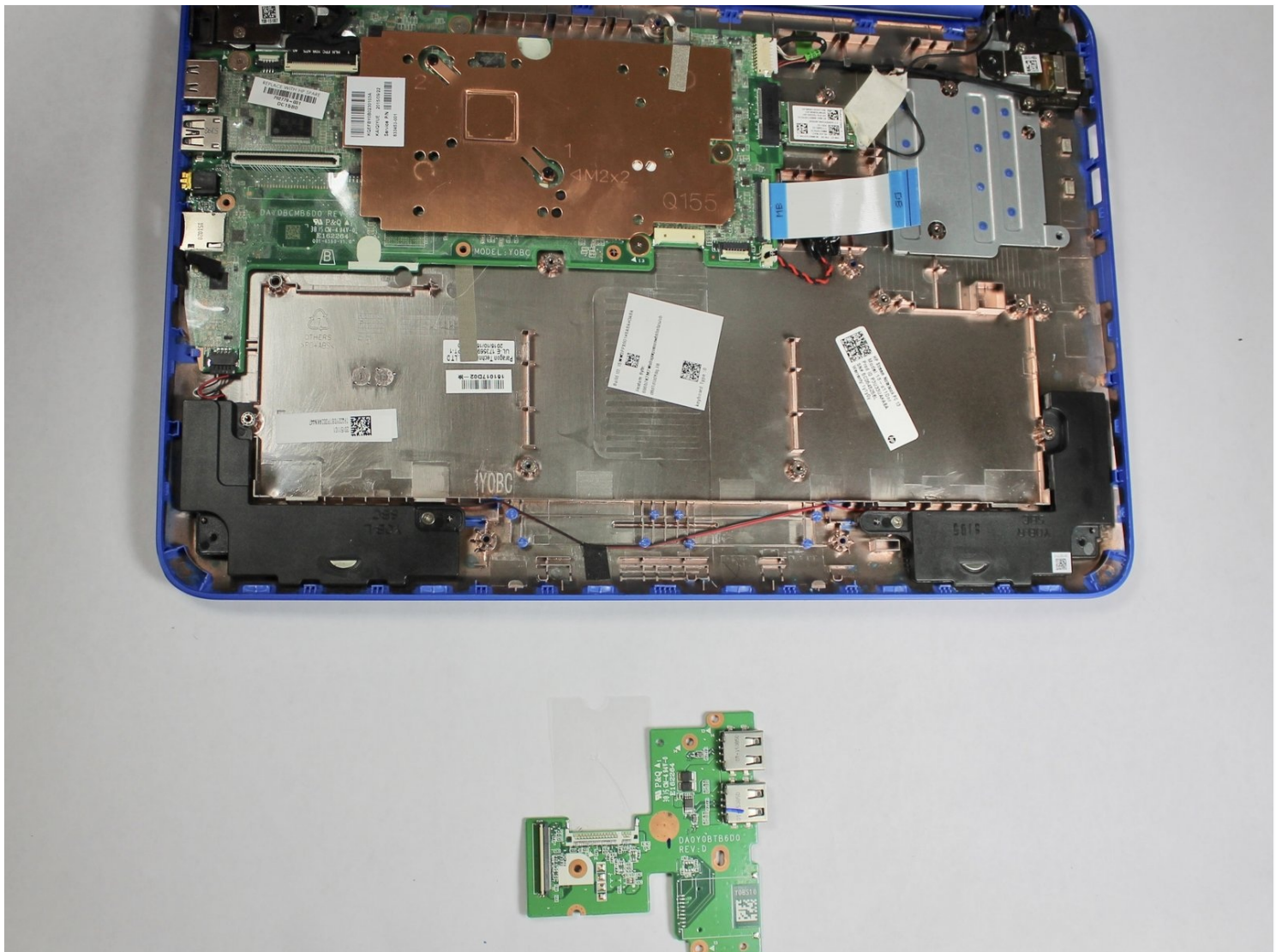




HP Stream 13-c110nr USB/Card Reader Board Replacement

The USB/SD card reader repair guide will assist...

Written By: Stacey Deel



INTRODUCTION

The USB/SD card reader repair guide will assist the user in removal and installation for the HP Stream 13-c110nr.

TOOLS:

Phillips #0 Screwdriver (1)

Spudger (1)


Pick Tool (1)

Magnetic Project Mat (1)

Step 1 — Keyboard Assembly



- Close the device.
- Remove AC adapter plug from electrical outlet.
- Remove AC adapter from device.
- Turn the device off.
- Unplug all external devices from device.

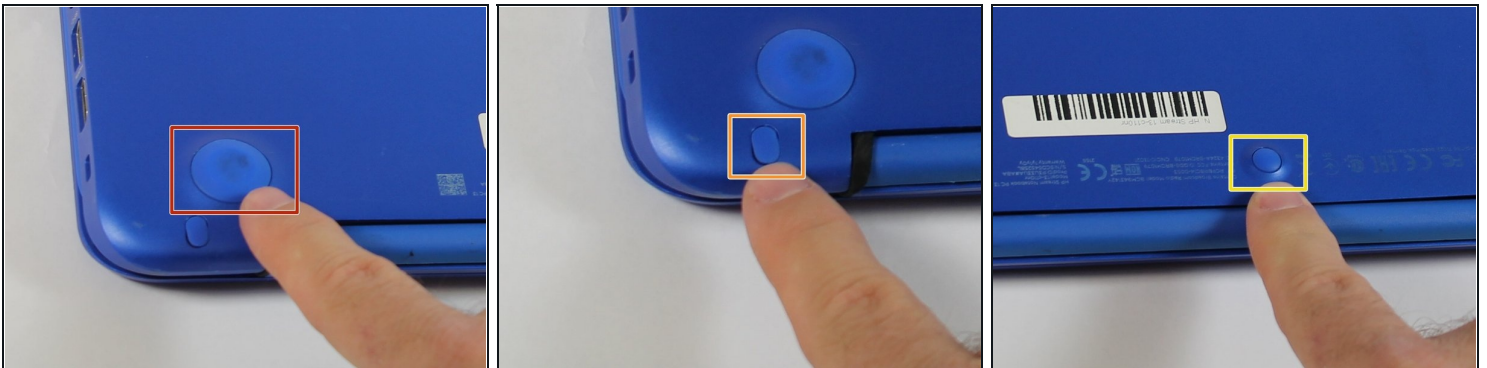
 If you are unsure whether the computer is off or in hibernation mode, start the computer and then shutdown the operating system.

Step 2



- Turn the device upside down with the back facing towards you.

Step 3



- Use a pick to remove the two (2) large computer feet along the back edge of the device.
- Use a pick to remove the two (2) small computer feet.
- Use a pick to remove the one (1) screw cover.
- Place rubber computer feet in safe place for reassembly.

Step 4



- Remove the thirteen (13) Phillips P0 PM2.5x6.0 mm screws.
- Place the thirteen (13) screws on [magnetic mat](#) for reassembly.

Step 5



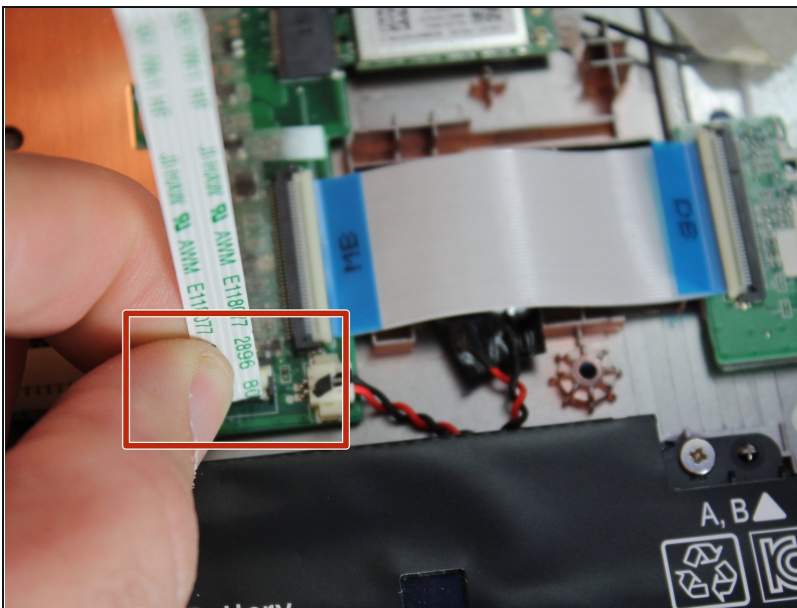
- Turn the device over with the front facing towards you.
- Open the device as shown.

Step 6



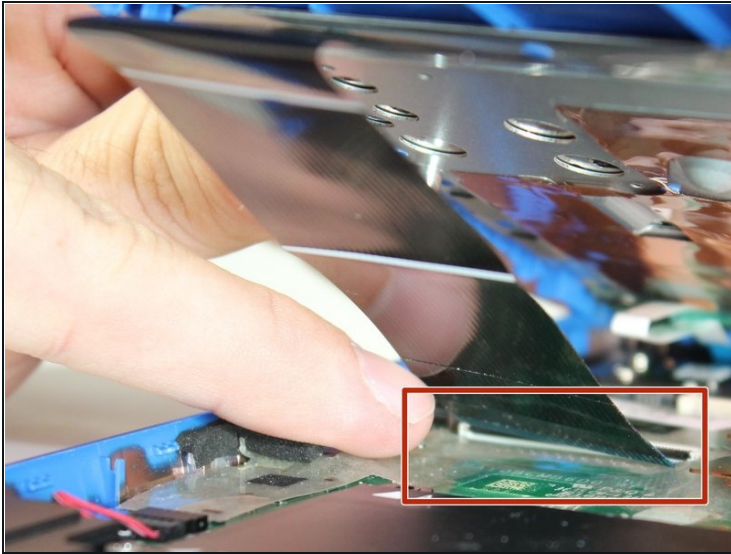
- Insert the Spudger between the Top Cover and Bottom Cover to lift the front edge until it separates from the Bottom Cover.
- ⓘ Do not completely remove the Keyboard/Top cover from the Bottom cover yet.

Step 7



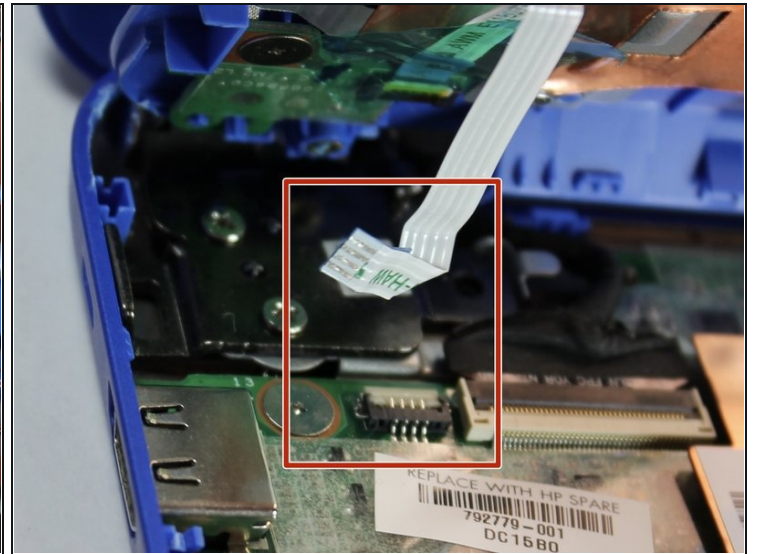
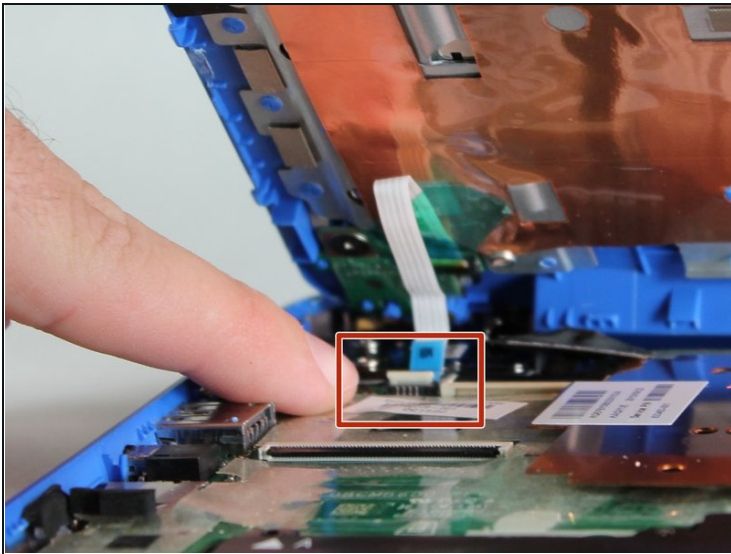
- Disconnect the Touchpad cable.

Step 8



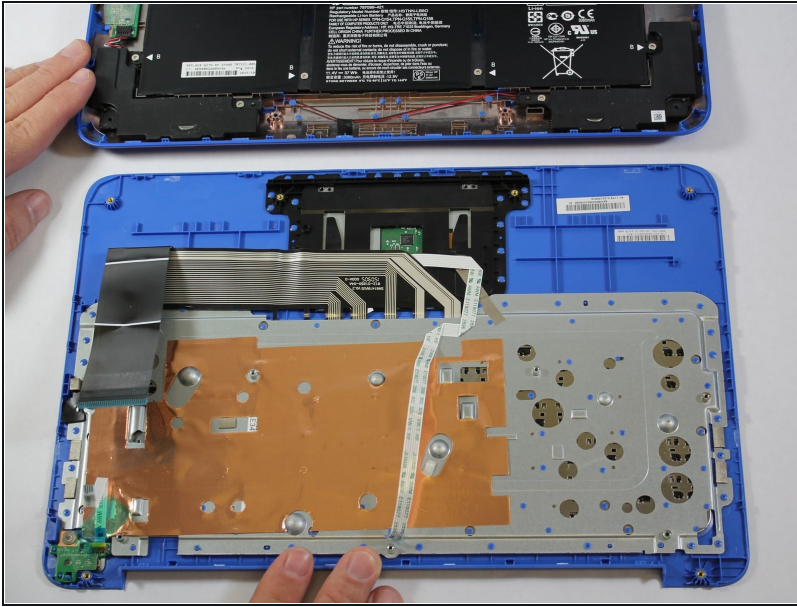
- Disconnect the Keyboard Cable.

Step 9



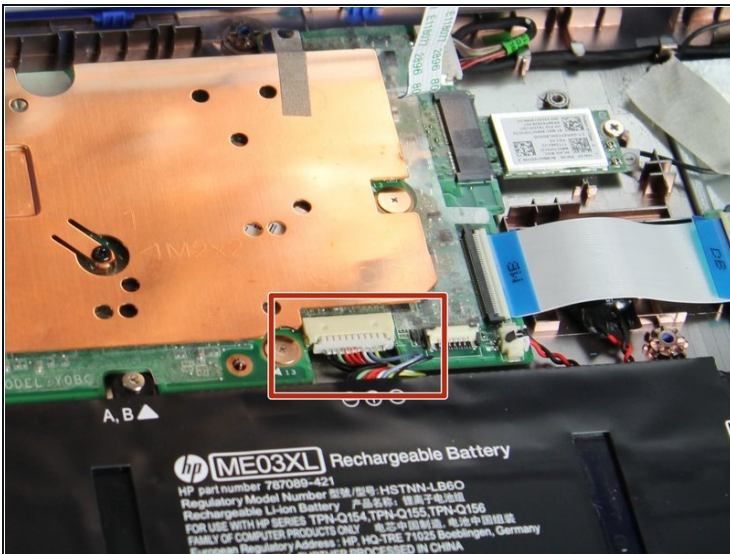
- Disconnect the Power connector cable.

Step 10



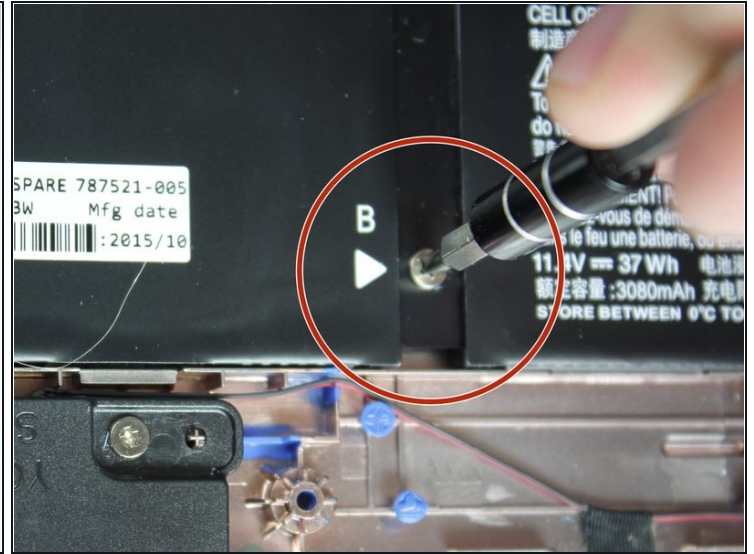
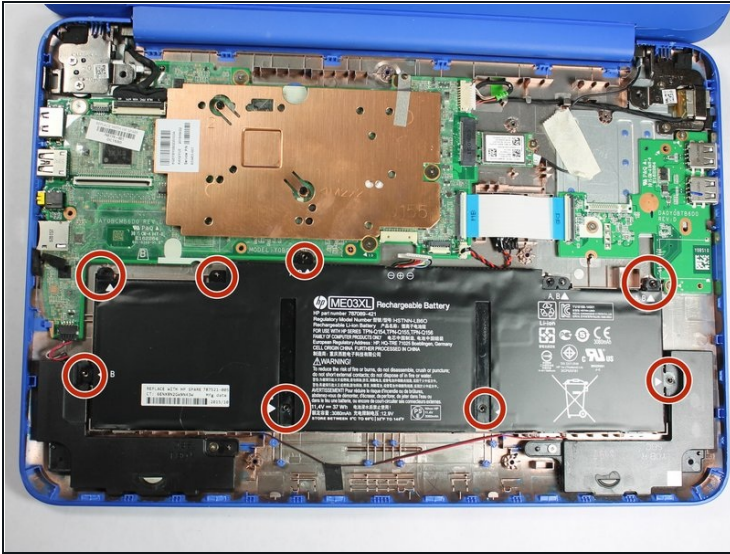
- Remove the Keyboard/Top Cover from the device.

Step 11 — Battery Assembly



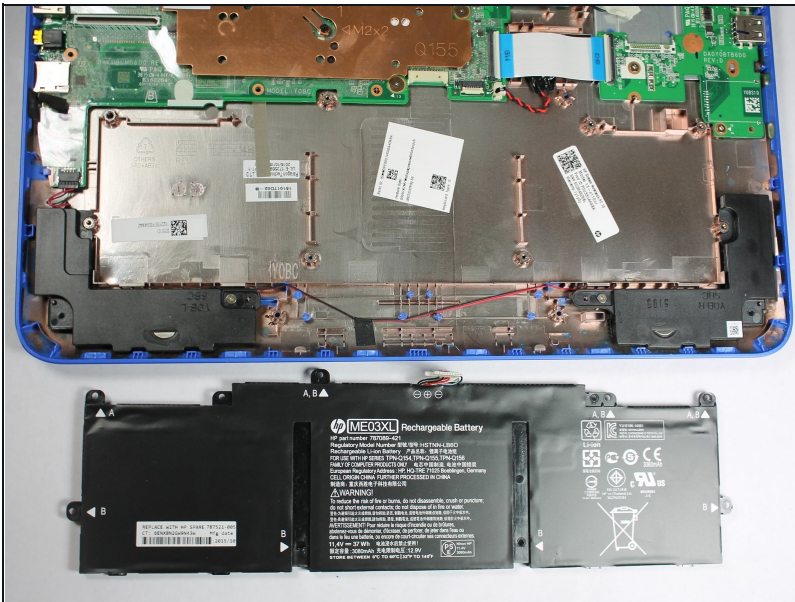
- Use a pick to detach the Battery assembly cable.

Step 12



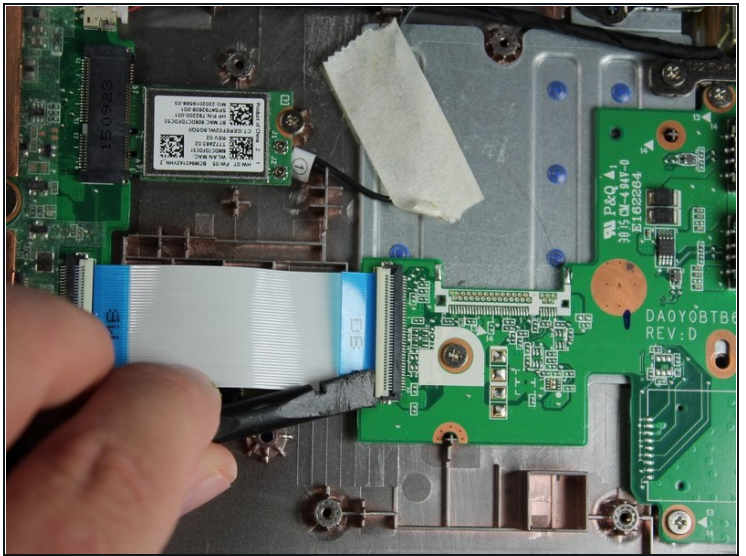
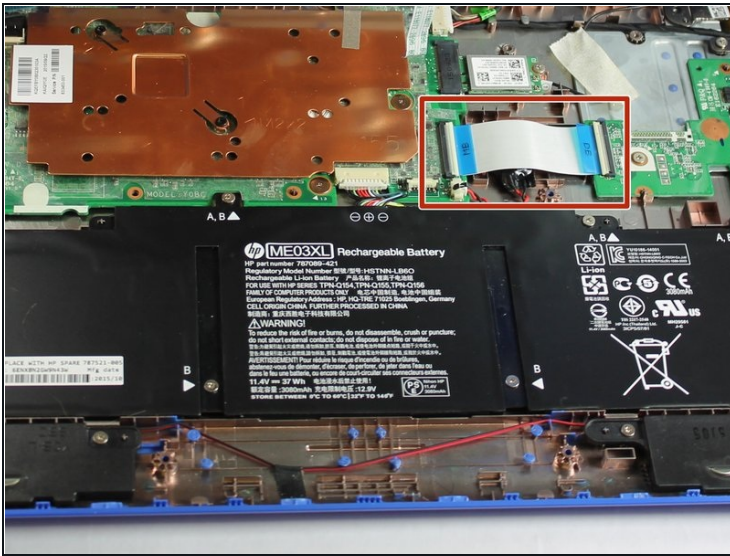
- Remove eight (8) Phillips P0 PM2.0x3.0 mm screws from Battery assembly.
- Place eight (8) screws on magnetic mat for reassembly.

Step 13



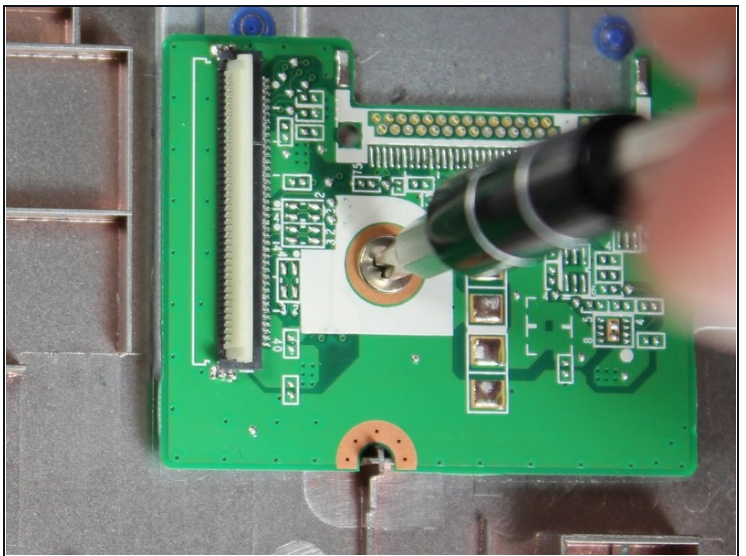
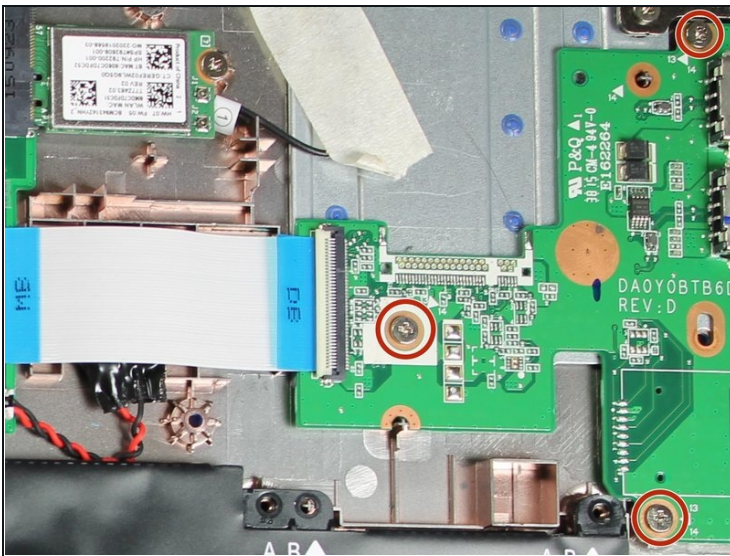
- Remove Battery Assembly from device.

Step 14 — USB/Card Reader Board



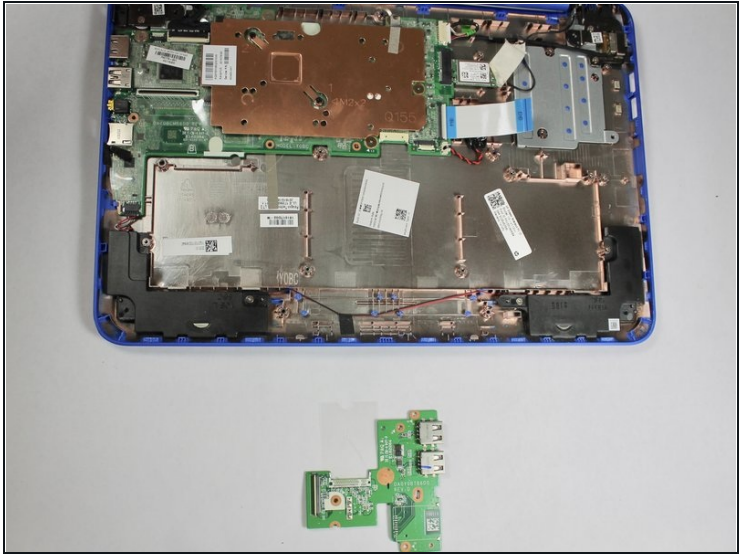
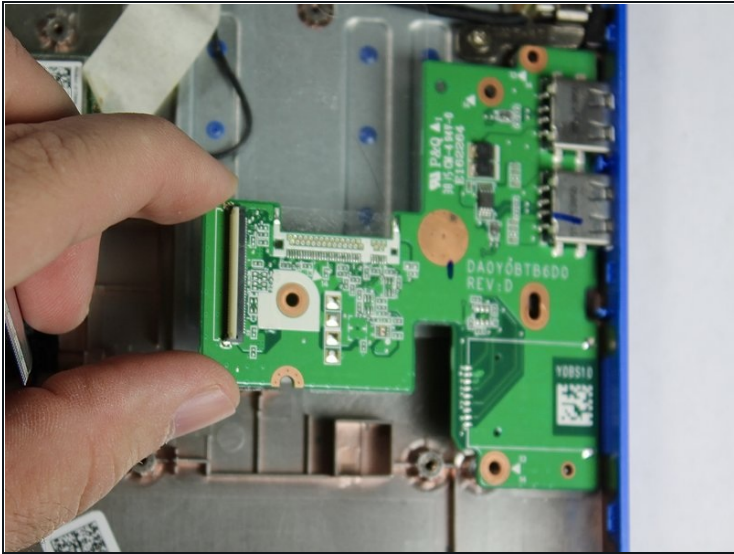
- Use a pick to disconnect the USB/Card Reader cable from the System Board.

Step 15



- Remove three (3) Phillips P0 PM2.0x3.0 mm screws.
- Place three (3) screws on magnetic mat for reassembly.

Step 16



- Remove the USB/Card Reader board assembly from the device.

To reassemble your device, follow these instructions in reverse order.