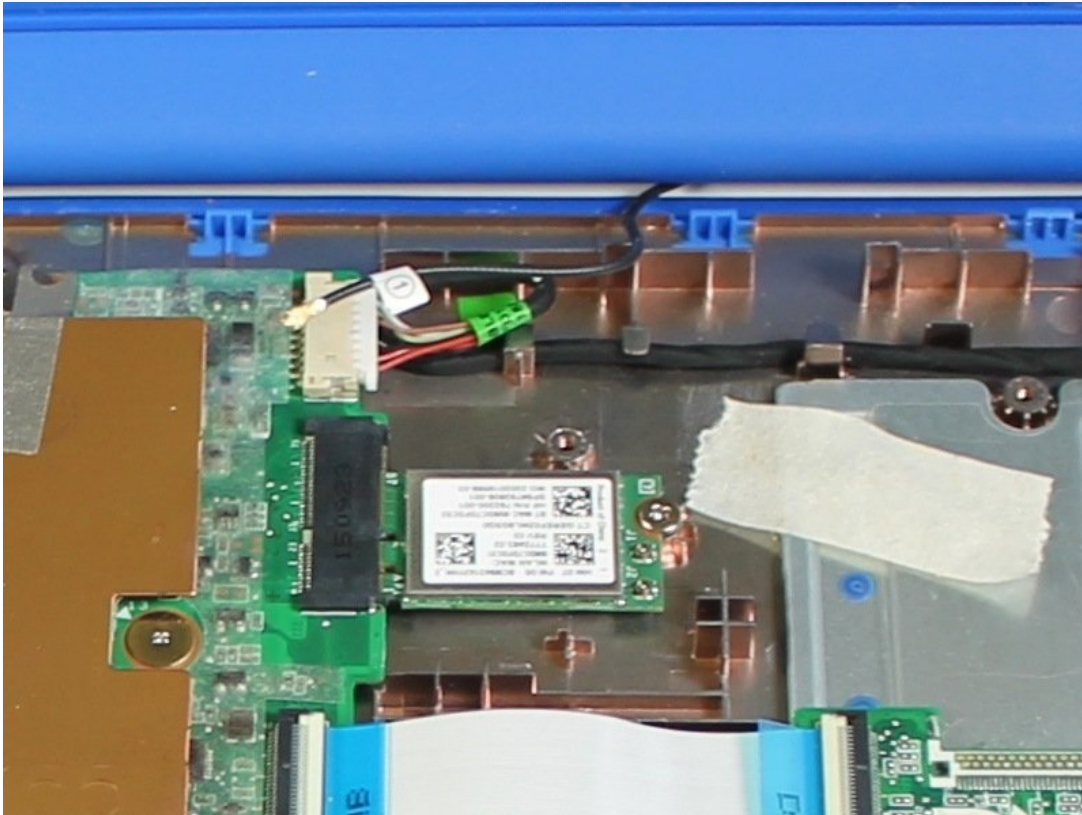




HP Stream 13-c110nr WLAN Module Replacement

The WLAN repair guide will assist the user in...

Written By: Stacey Deel



INTRODUCTION

The WLAN repair guide will assist the user in removal and installation of the WLAN module for the HP Stream 13-c110nr.

TOOLS:

Phillips #0 Screwdriver (1)

Spudger (1)


Pick Tool (1)

Magnetic Project Mat (1)

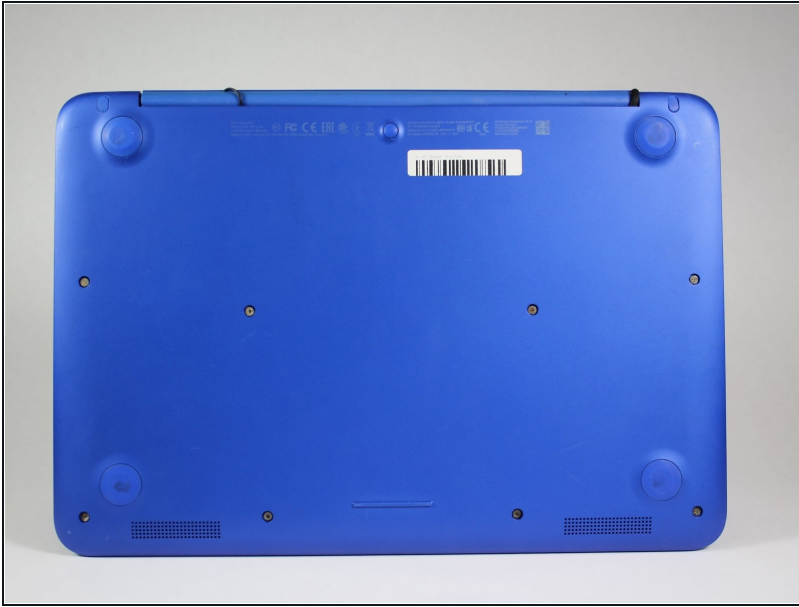
Step 1 — Keyboard Assembly



- Close the device.
- Remove AC adapter plug from electrical outlet.
- Remove AC adapter from device.
- Turn the device off.
- Unplug all external devices from device.

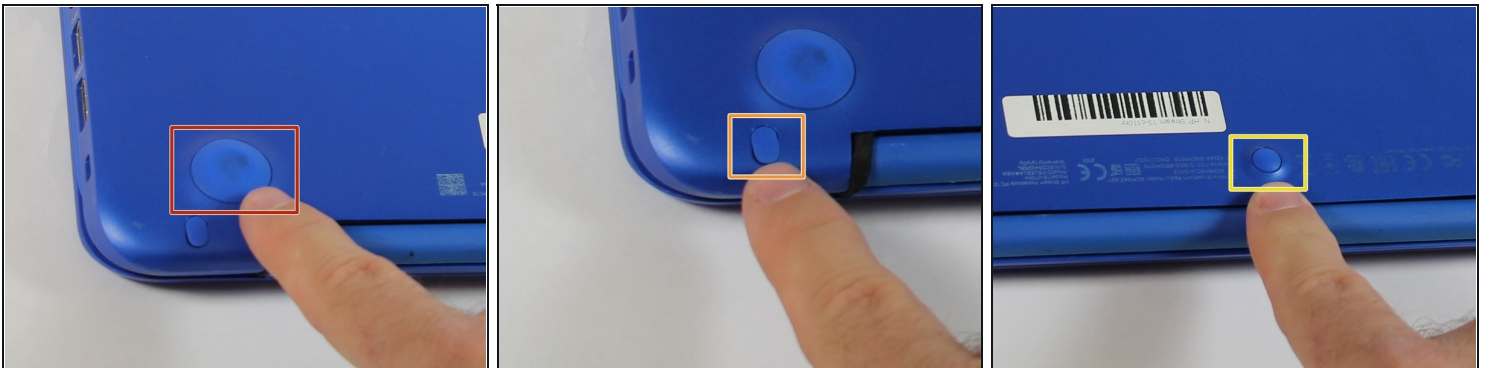
 If you are unsure whether the computer is off or in hibernation mode, start the computer and then shutdown the operating system.

Step 2



- Turn the device upside down with the back facing towards you.

Step 3



- Use a pick to remove the two (2) large computer feet along the back edge of the device.
- Use a pick to remove the two (2) small computer feet.
- Use a pick to remove the one (1) screw cover.
- Place rubber computer feet in safe place for reassembly.

Step 4



- Remove the thirteen (13) Phillips P0 PM2.5x6.0 mm screws.
- Place the thirteen (13) screws on [magnetic mat](#) for reassembly.

Step 5



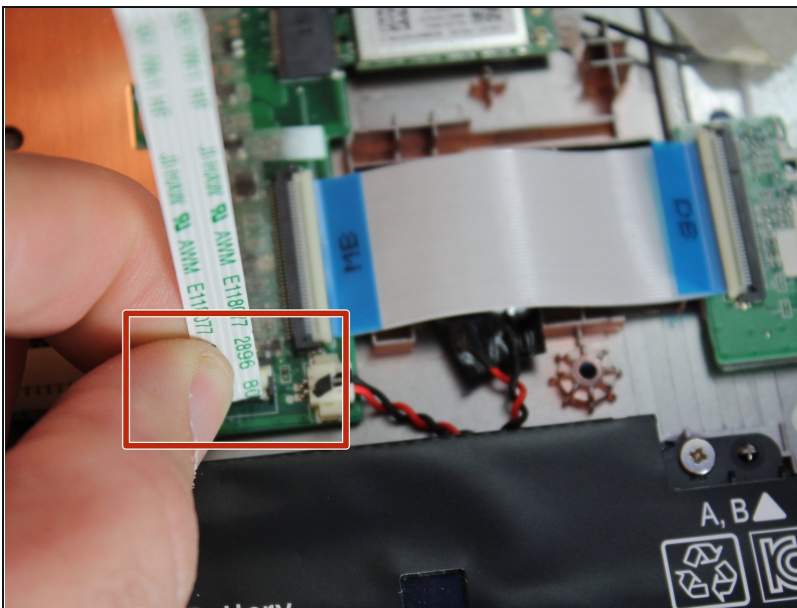
- Turn the device over with the front facing towards you.
- Open the device as shown.

Step 6



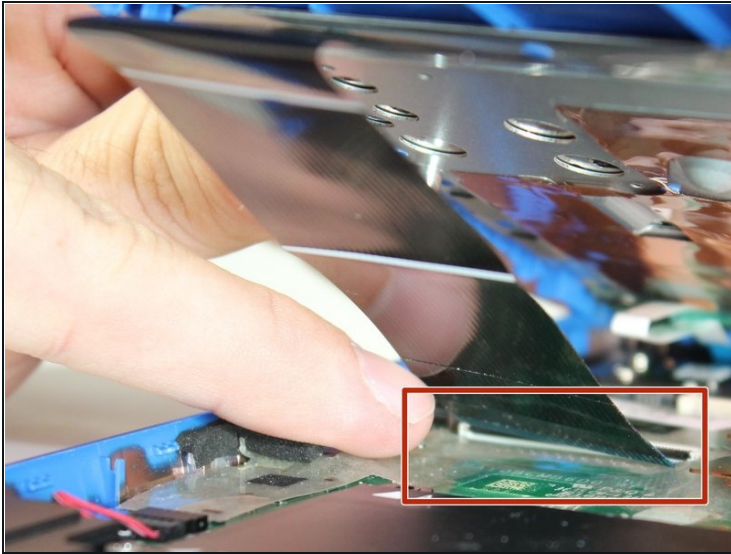
- Insert the Spudger between the Top Cover and Bottom Cover to lift the front edge until it separates from the Bottom Cover.
- ⓘ Do not completely remove the Keyboard/Top cover from the Bottom cover yet.

Step 7



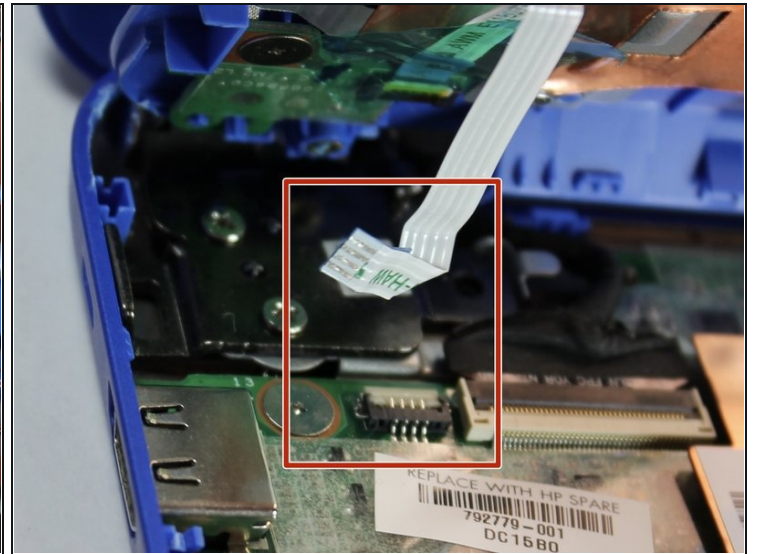
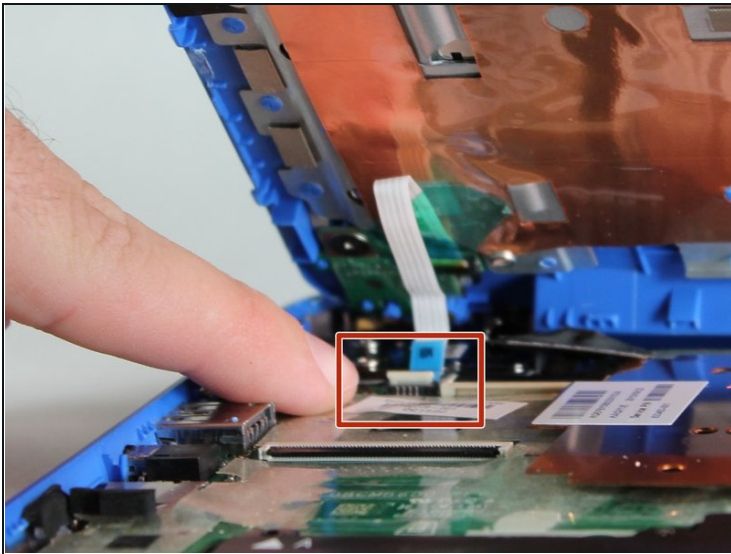
- Disconnect the Touchpad cable.

Step 8



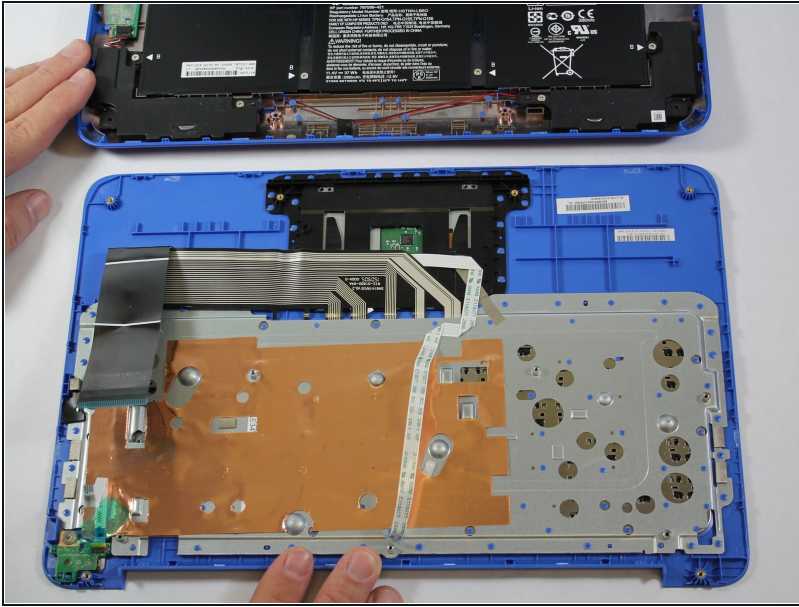
- Disconnect the Keyboard Cable.

Step 9



- Disconnect the Power connector cable.

Step 10



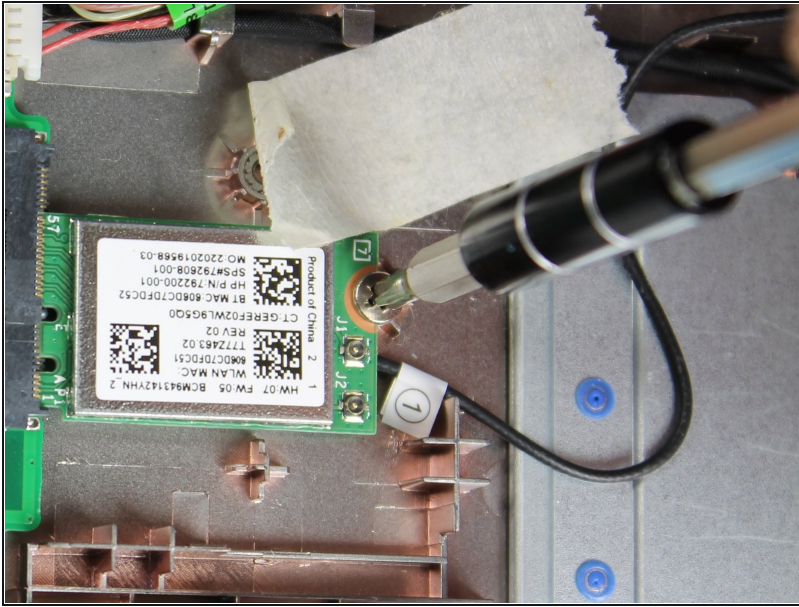
- Remove the Keyboard/Top Cover from the device.

Step 11 — WLAN Module



- Disconnect the WLAN antenna cable from the WLAN module.

Step 12



- Remove one (1) Phillips P0 PM2.0x3.0 mm screw.
- Place one (1) screw on magnetic mat for reassembly.

Step 13



- Remove the WLAN Module from device.

To reassemble your device, follow these instructions in reverse order.