



HP Stream 13-c110nr Display Replacement

The Display Assembly repair guide will assist...

Written By: Stacey Deel



INTRODUCTION

The Display Assembly repair guide will assist users to repair the monitor of the HP Stream 13-c110nr. The guide will also provide steps to remove the WLAN and camera assembly.

TOOLS:

[Phillips #0 Screwdriver](#) (1)

[Spudger](#) (1)

[Pick Tool](#) (1)


[Magnetic Project Mat](#) (1)

[Tweezers](#) (1)

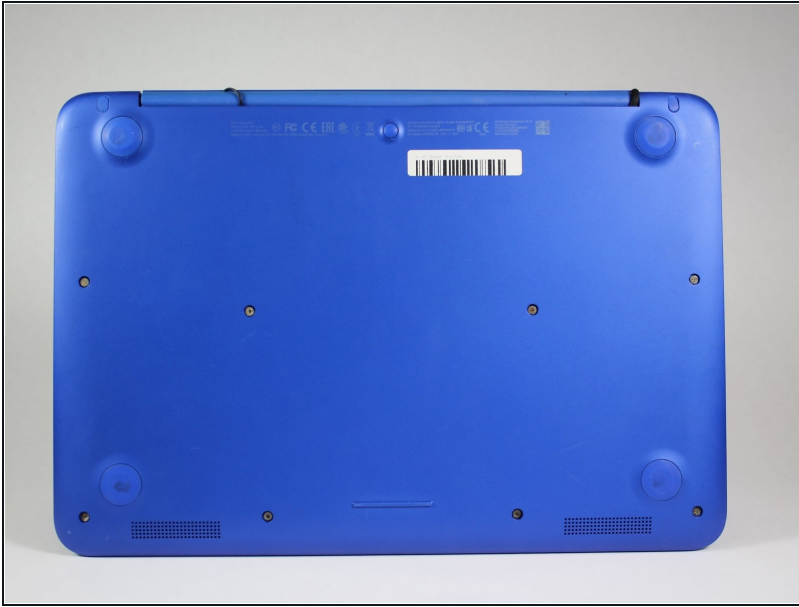
Step 1 — Keyboard Assembly



- Close the device.
- Remove AC adapter plug from electrical outlet.
- Remove AC adapter from device.
- Turn the device off.
- Unplug all external devices from device.

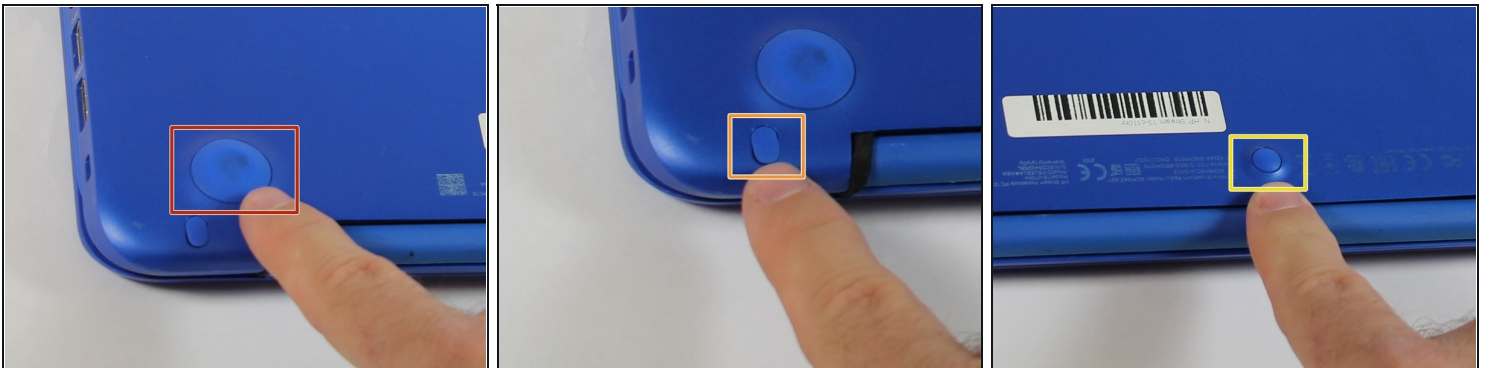
 If you are unsure whether the computer is off or in hibernation mode, start the computer and then shutdown the operating system.

Step 2



- Turn the device upside down with the back facing towards you.

Step 3



- Use a pick to remove the two (2) large computer feet along the back edge of the device.
- Use a pick to remove the two (2) small computer feet.
- Use a pick to remove the one (1) screw cover.
- Place rubber computer feet in safe place for reassembly.

Step 4



- Remove the thirteen (13) Phillips P0 PM2.5x6.0 mm screws.
- Place the thirteen (13) screws on [magnetic mat](#) for reassembly.

Step 5



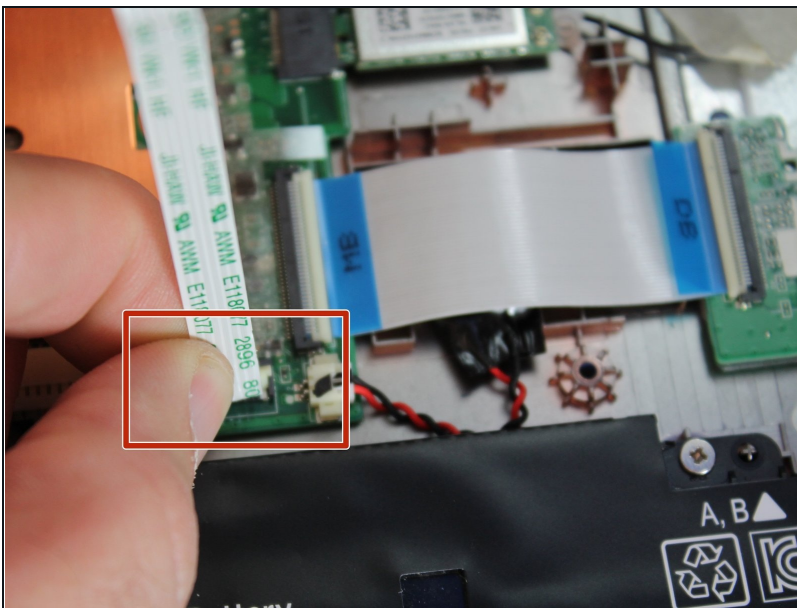
- Turn the device over with the front facing towards you.
- Open the device as shown.

Step 6



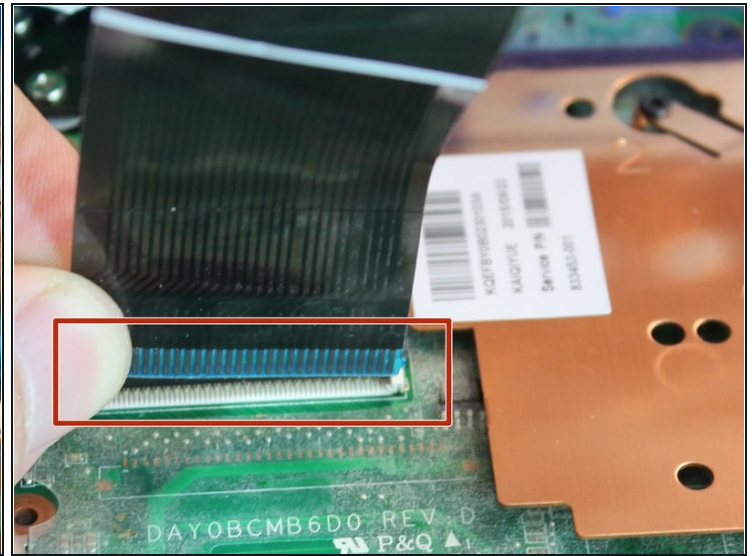
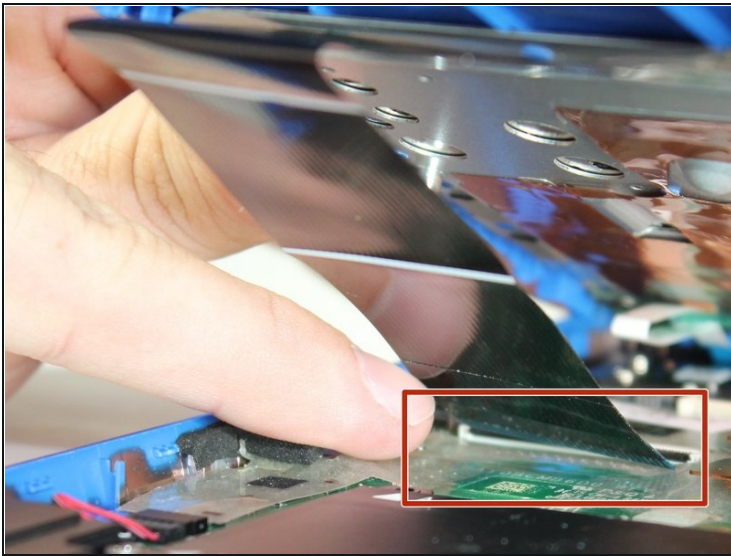
- Insert the Spudger between the Top Cover and Bottom Cover to lift the front edge until it separates from the Bottom Cover.
- ① Do not completely remove the Keyboard/Top cover from the Bottom cover yet.

Step 7



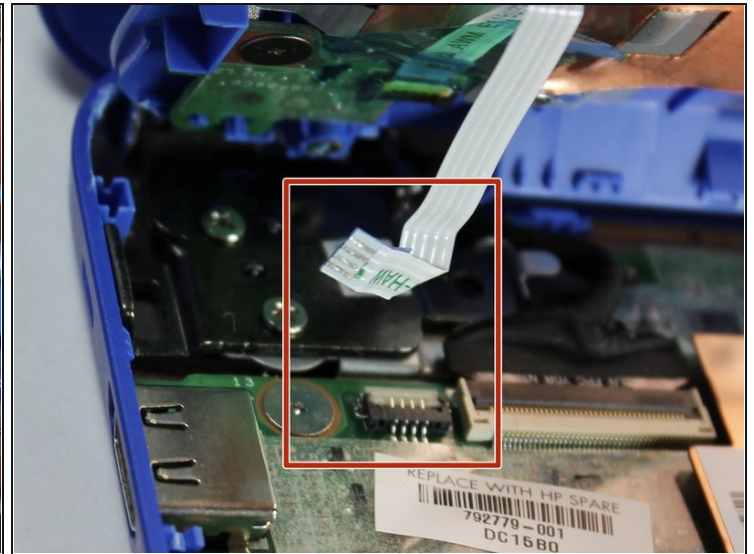
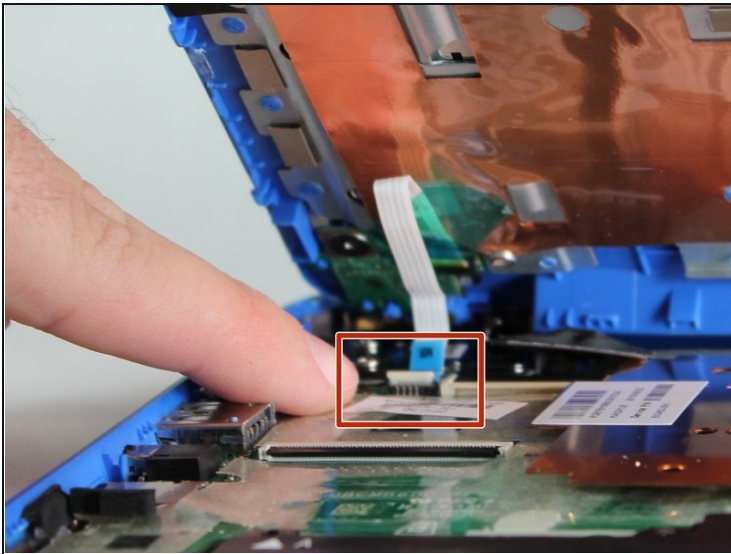
- Disconnect the Touchpad cable.

Step 8



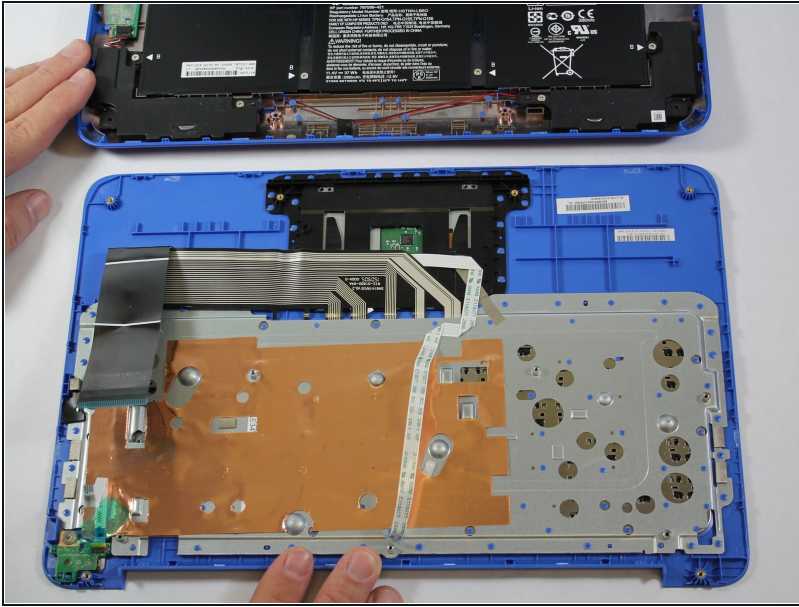
- Disconnect the Keyboard Cable.

Step 9



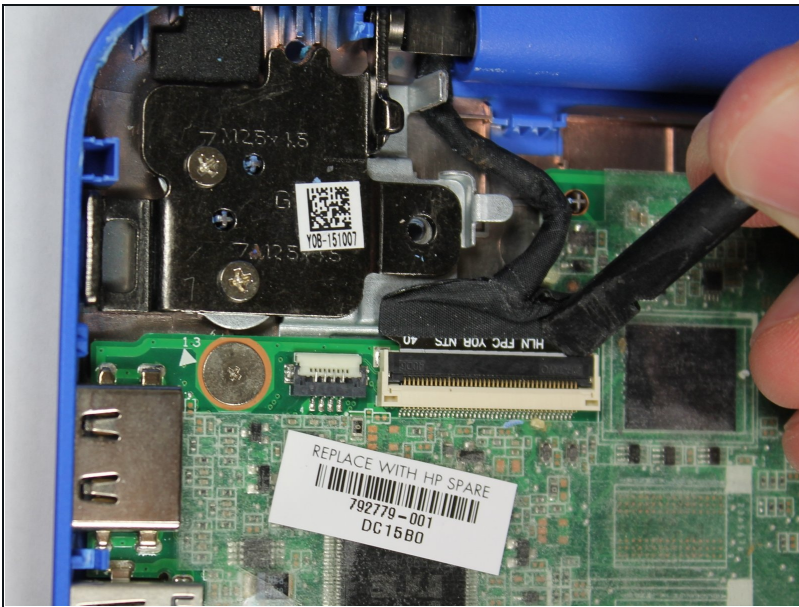
- Disconnect the Power connector cable.

Step 10



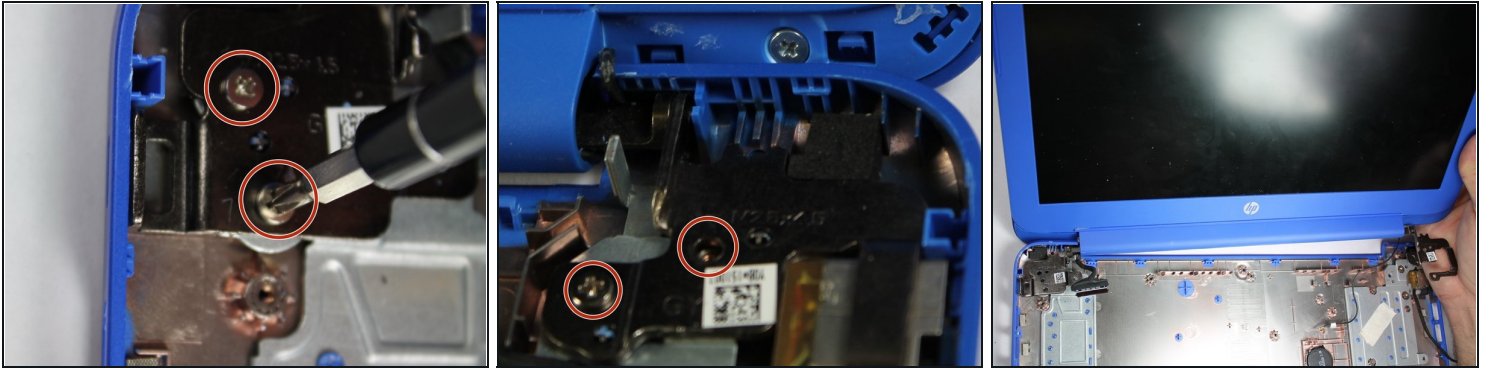
- Remove the Keyboard/Top Cover from the device.

Step 11 — Display Assembly



- Disconnect the Display Cable from the System Board.

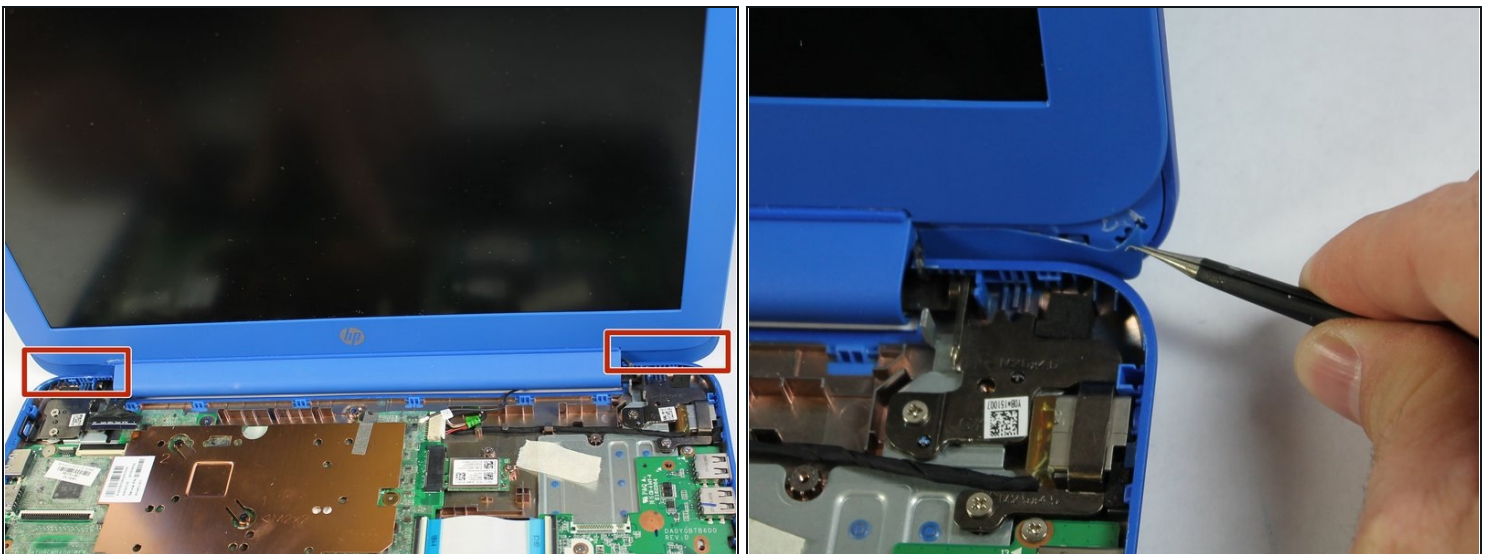
Step 12



- Remove the four (4) Phillips P0 PM2.5x4.5 mm screws from the screen retaining brackets.

☒ Place the four (4) screws on the magnetic mat for reassembly.

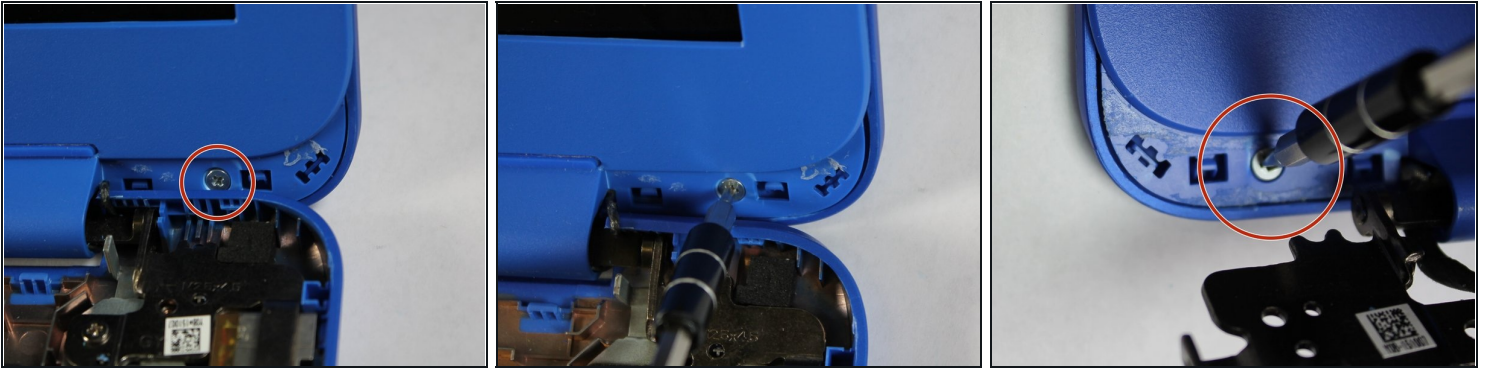
Step 13



- Peel off two (2) stickers located at the bottom corners of the display assembly.

☒ Place two (2) stickers in safe place for reassembly.

Step 14



- Remove the two (2) Phillips P0 PM2.5x2.0 mm screws.
- ☑ Place the two (2) screws on the magnetic mat for reassembly.

Step 15



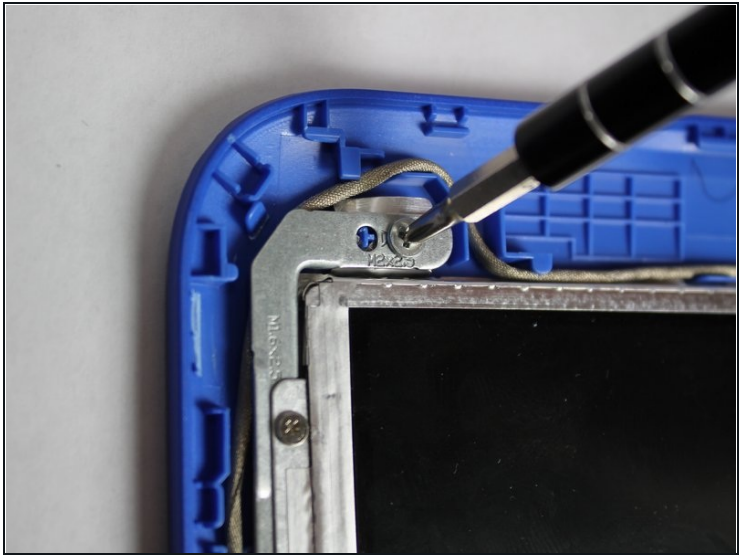
- Use a pick to pry off the display cover from the display.

Step 16



- Remove the Display Assembly.

Step 17



- Remove the four (4) Phillips P0 PM2.5x4.5 mm screws.
 - ☑ Place four (4) screws on magnetic mat for reassembly.
- Remove the two (2) Phillips P0 PM2.5x3.0 mm screws.
 - ☑ Place two (2) screws on magnetic mat for reassembly.

Step 18



- Separate display from back cover

To reassemble your device, follow these instructions in reverse order.