



Milwaukee M12 2407-20 Speed Selector Lever Replacement

Guide to replacing the speed selector lever on the Milwaukee M12 2407-20.

Written By: Allison Schieber



INTRODUCTION

This guide will walk through the steps to replace the speed selector lever on the Milwaukee M12 2407-20.



TOOLS:

- [T10 Torx Screwdriver](#) (1)
 - [Spudger](#) (1)
-

Step 1 — Outer Casing



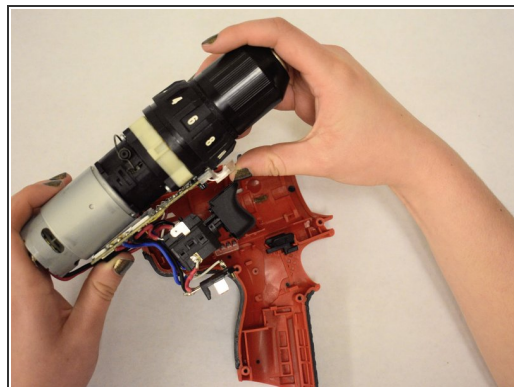
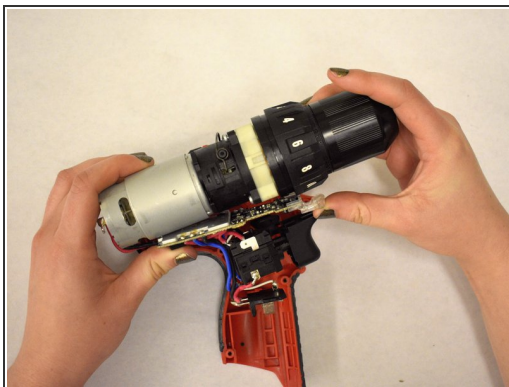
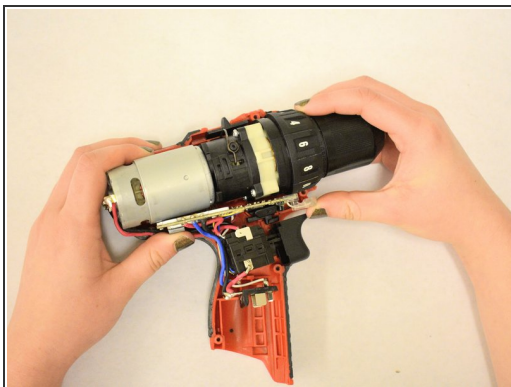
- Remove each of the seven 14mm Pan Hd. T-10 ST screws on one side of the housing assembly using the T10 screwdriver.

Step 2



- Remove metal clip located at the base of the drill, where the battery is to be inserted.
- ⓘ You may need to use a spudger if the clip is too difficult to remove with your fingers.

Step 3 — Speed Selector Lever



- Remove the unit from the housing assembly and set the housing assembly aside.

Step 4



- Use a spudger to pry the broken speed selector lever off the assembly.

To reassemble your device, follow these instructions in reverse order.