



# HP Stream 13-c110nr Keyboard Assembly Replacement

This guide is designed to walk you through a...

Written By: Stacey Deel



# INTRODUCTION

This guide is designed to walk you through a step-by-step process of replacing the keyboard assembly on your device. The Keyboard Assembly guide will assist the user in opening the HP Stream 13-c110nr for further repairs. The guide is the initial guide for all repair activity.

---

## TOOLS:

[Phillips #0 Screwdriver](#) (1)

[Spudger](#) (1)

[Pick Tool](#) (1)


[Magnetic Project Mat](#) (1)

---

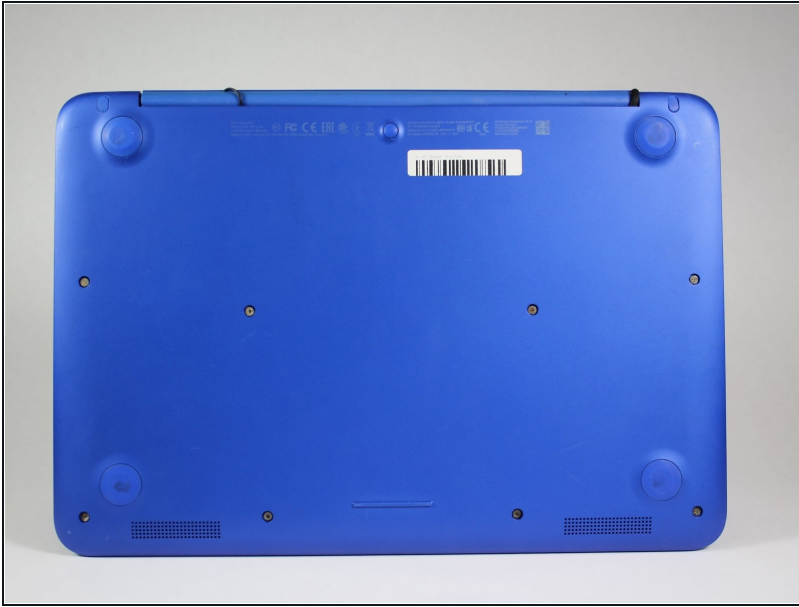
## Step 1 — Keyboard Assembly



- Close the device.
- Remove AC adapter plug from electrical outlet.
- Remove AC adapter from device.
- Turn the device off.
- Unplug all external devices from device.

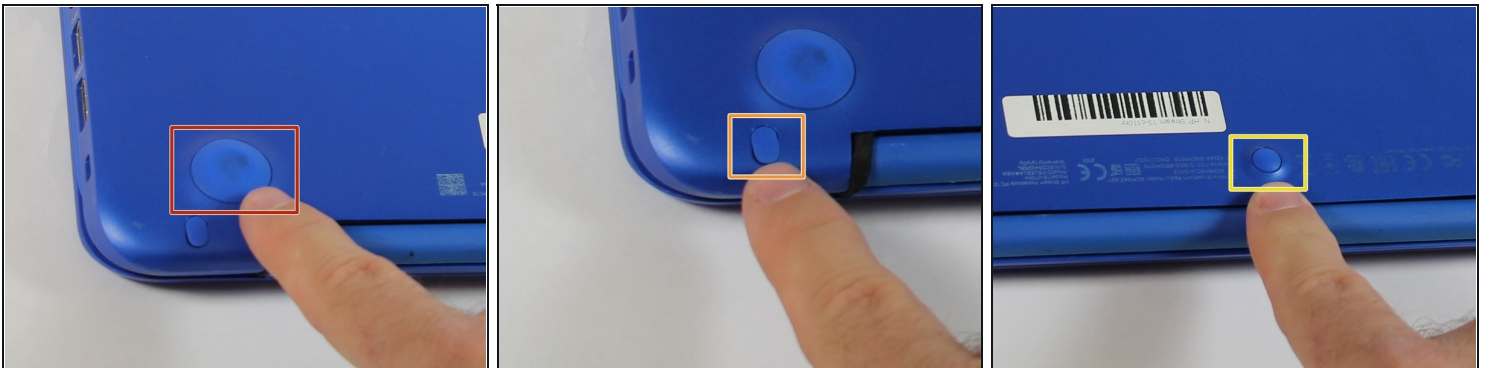
 If you are unsure whether the computer is off or in hibernation mode, start the computer and then shutdown the operating system.

## Step 2



- Turn the device upside down with the back facing towards you.

## Step 3



- Use a pick to remove the two (2) large computer feet along the back edge of the device.
- Use a pick to remove the two (2) small computer feet.
- Use a pick to remove the one (1) screw cover.
- Place rubber computer feet in safe place for reassembly.

## Step 4



- Remove the thirteen (13) Phillips P0 PM2.5x6.0 mm screws.
- Place the thirteen (13) screws on [magnetic mat](#) for reassembly.

## Step 5



- Turn the device over with the front facing towards you.
- Open the device as shown.

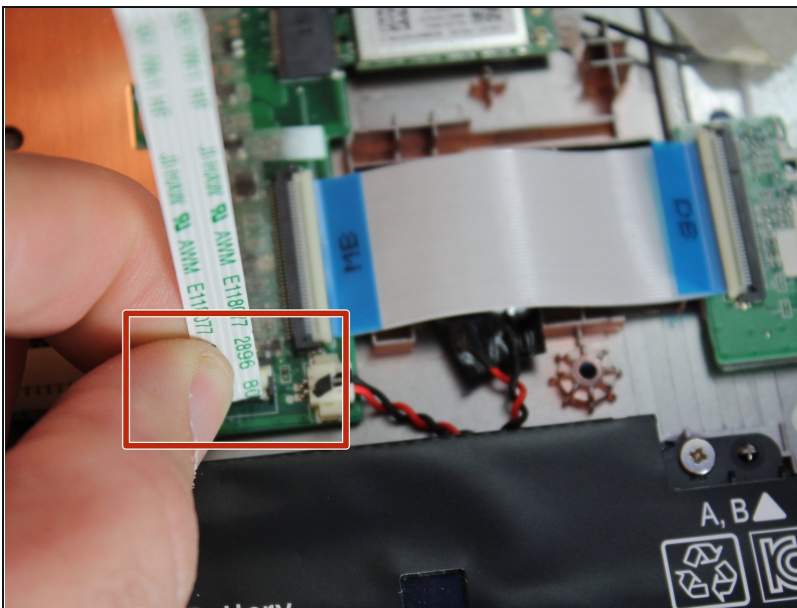


## Step 6



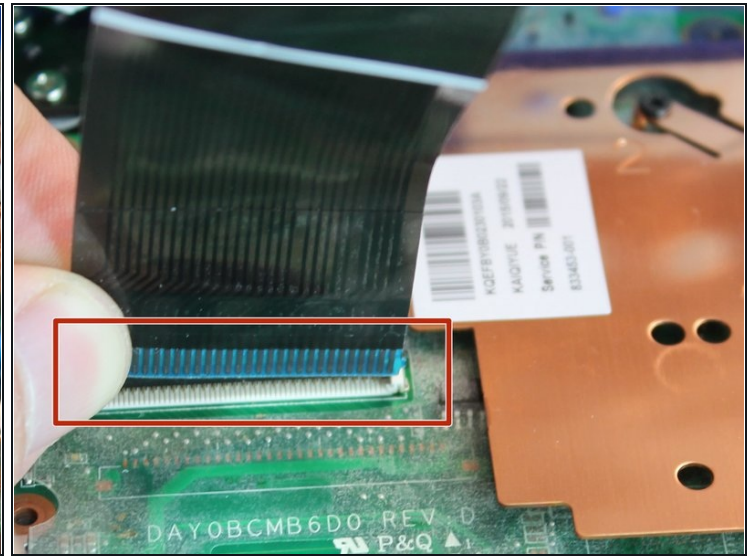
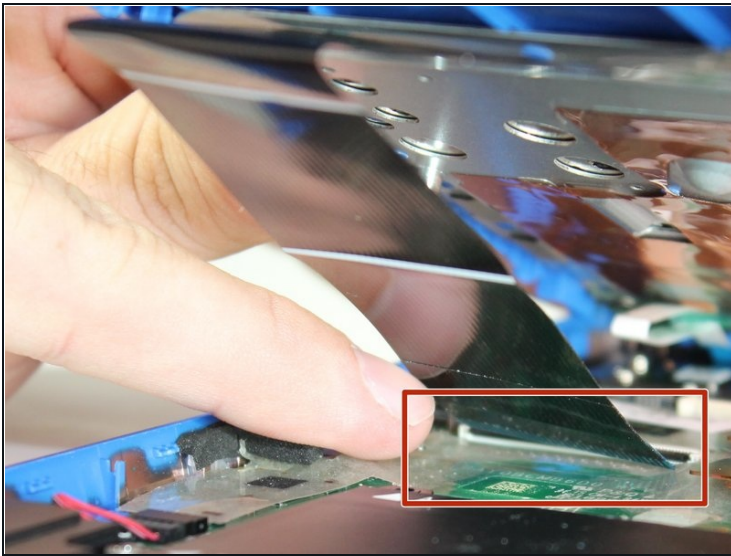
- Insert the Spudger between the Top Cover and Bottom Cover to lift the front edge until it separates from the Bottom Cover.
- ① Do not completely remove the Keyboard/Top cover from the Bottom cover yet.

## Step 7



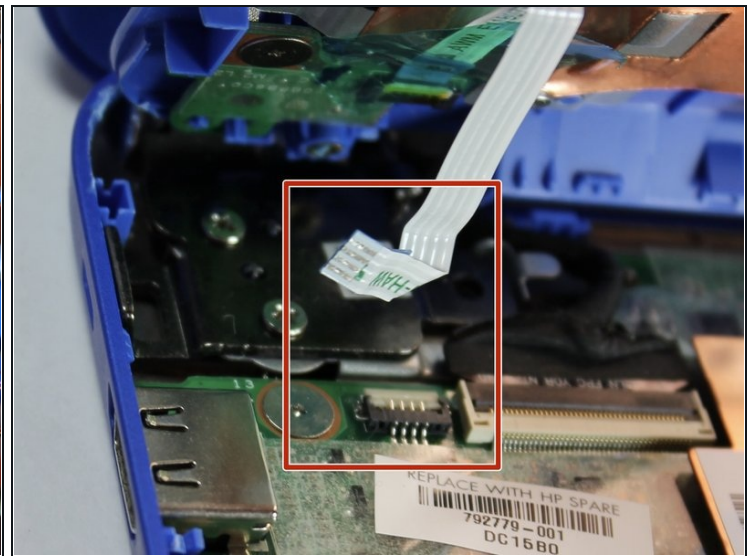
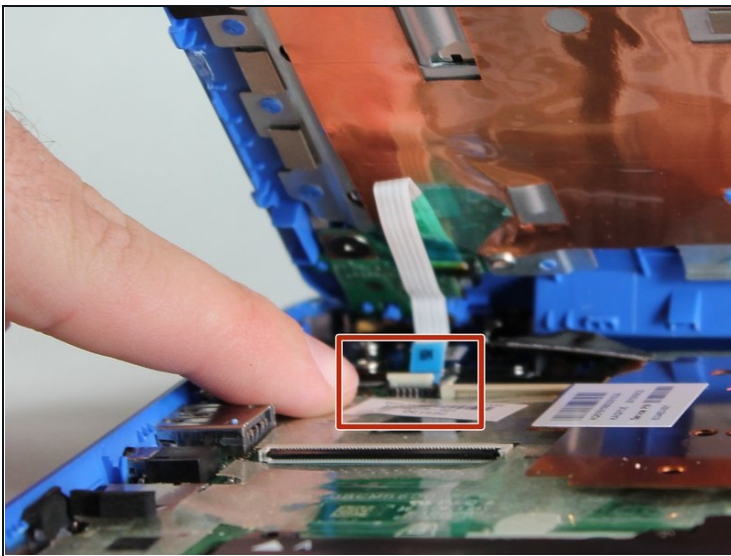
- Disconnect the Touchpad cable.

## Step 8



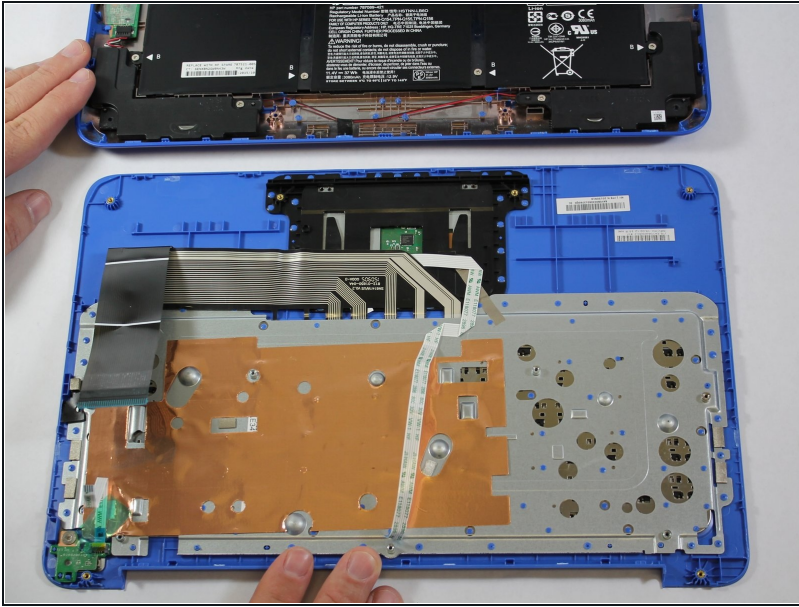
- Disconnect the Keyboard Cable.

## Step 9



- Disconnect the Power connector cable.

## Step 10



- Remove the Keyboard/Top Cover from the device.

---

To reassemble your device, follow these instructions in reverse order.