



# 8Bitdo N30 Joystick Replacement

Replace the joystick component on the 8Bitdo N30 Arcade Stick.

Written By: Carlie Kratz



---

## INTRODUCTION

Use this guide to replace a faulty joystick component on the 8Bitdo N30 Arcade Stick without damaging the Retro game controller.

A Phillips #0 screwdriver and a flathead 3/32" screwdriver are required to remove screws.

No special skills are required. Take caution in regards to removing and organizing the pieces of the 8Bitdo N30 Joystick when you are replacing the joystick.



### TOOLS:

- [Phillips #0 Screwdriver](#) (1)
  - [Flathead 3/32" or 2.5 mm Screwdriver](#) (1)
-

## Step 1 — Joystick



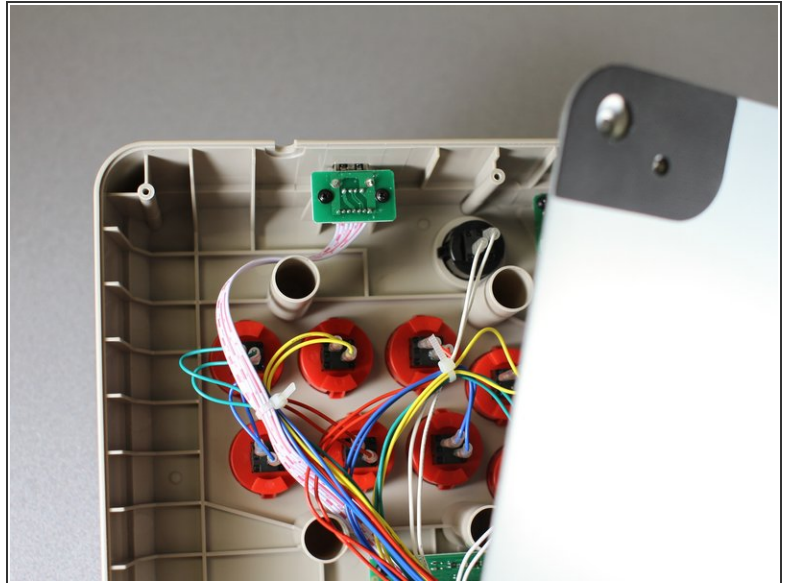
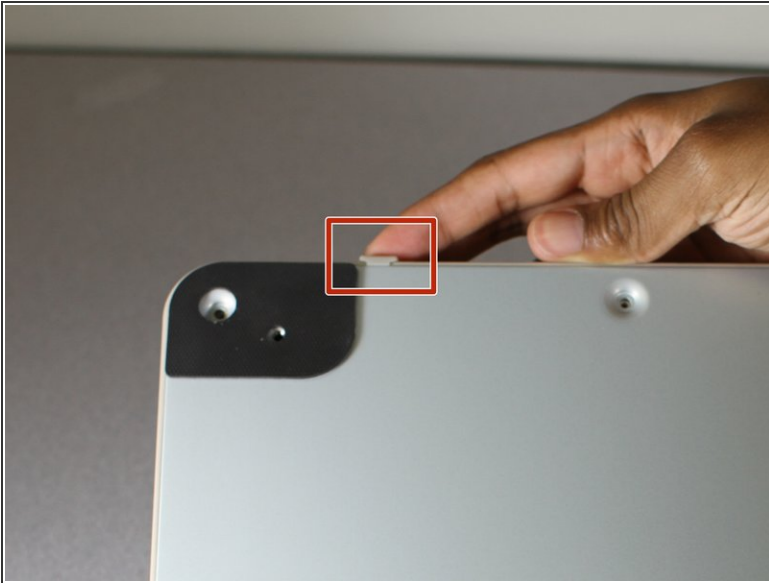
- Turn the device over so that the bottom of the device is facing up.

## Step 2



- Use a Phillips #0 screwdriver to remove all ten of the 3 mm screws on the back plate.

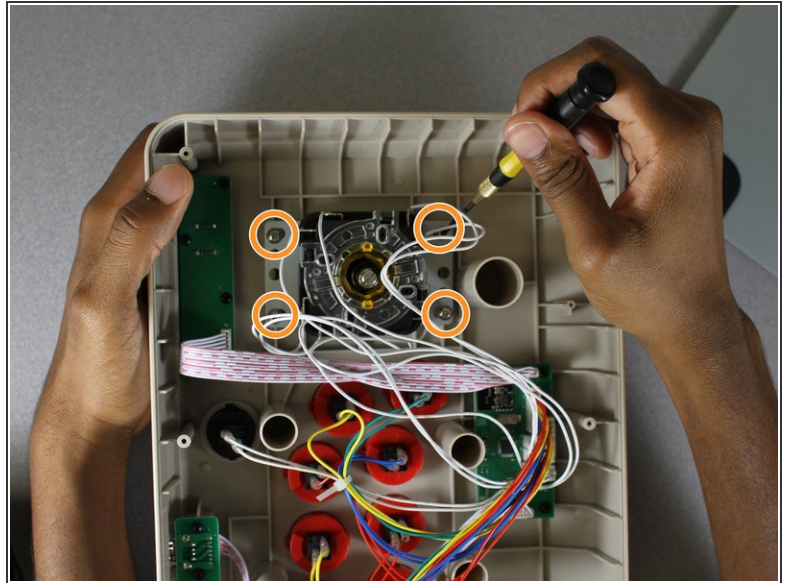
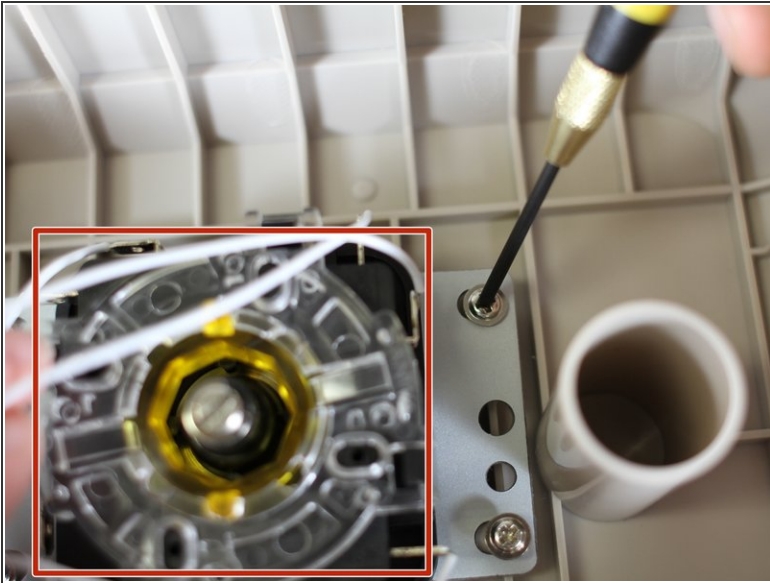
### Step 3



- Remove the rubber slider from the device.
- Hold the arcade stick and pry the back panel away from the device until it comes off.
- ☑ Remember the position of the rubber slider; it will be replaced at the end of the process.

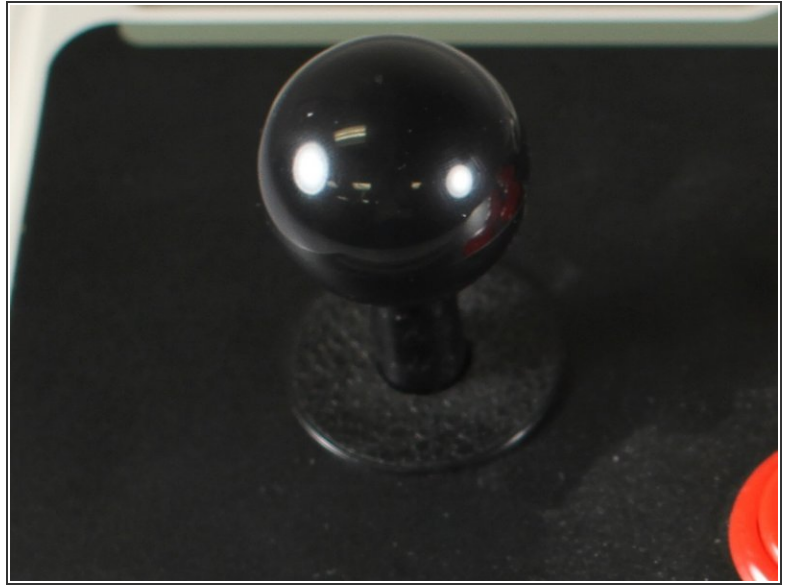
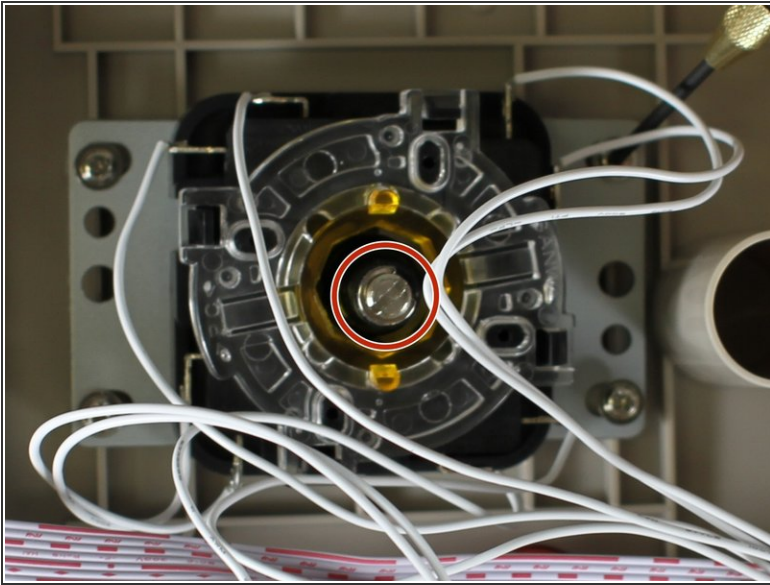


## Step 4



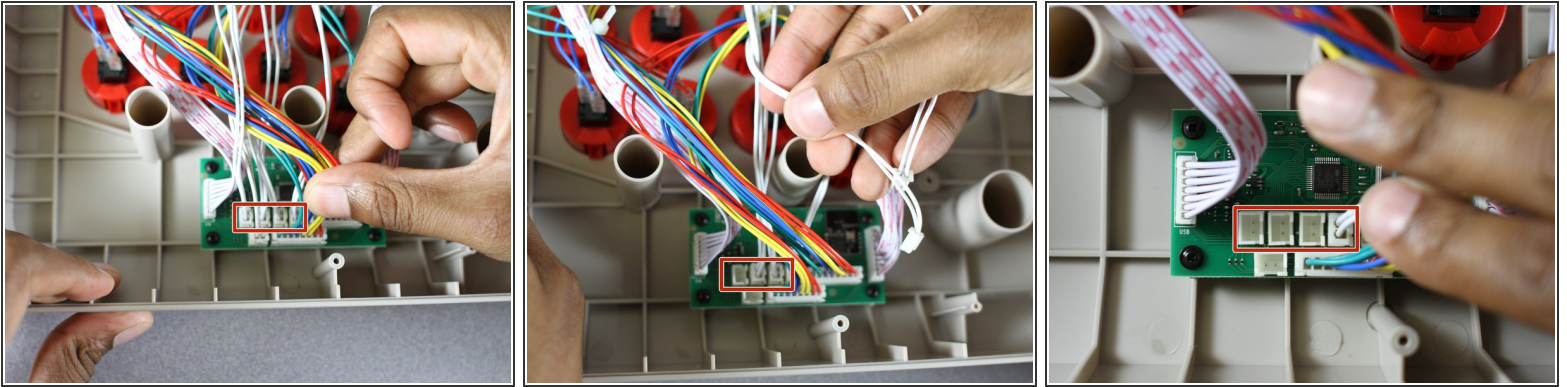
- Locate the back piece of the joystick.
- Remove the four screws that secure the joystick using the Phillips #0 screwdriver.

## Step 5




- Use a flathead screwdriver to remove the middle screw that holds the ball piece onto the joystick.
- Remove the ball piece and set it aside.
- ⓘ Be sure to hold the ball piece in place while turning the screw counterclockwise.
- ✦ When attaching the new joystick and ball piece, turn the screw clockwise while holding the ball piece in place.

## Step 6

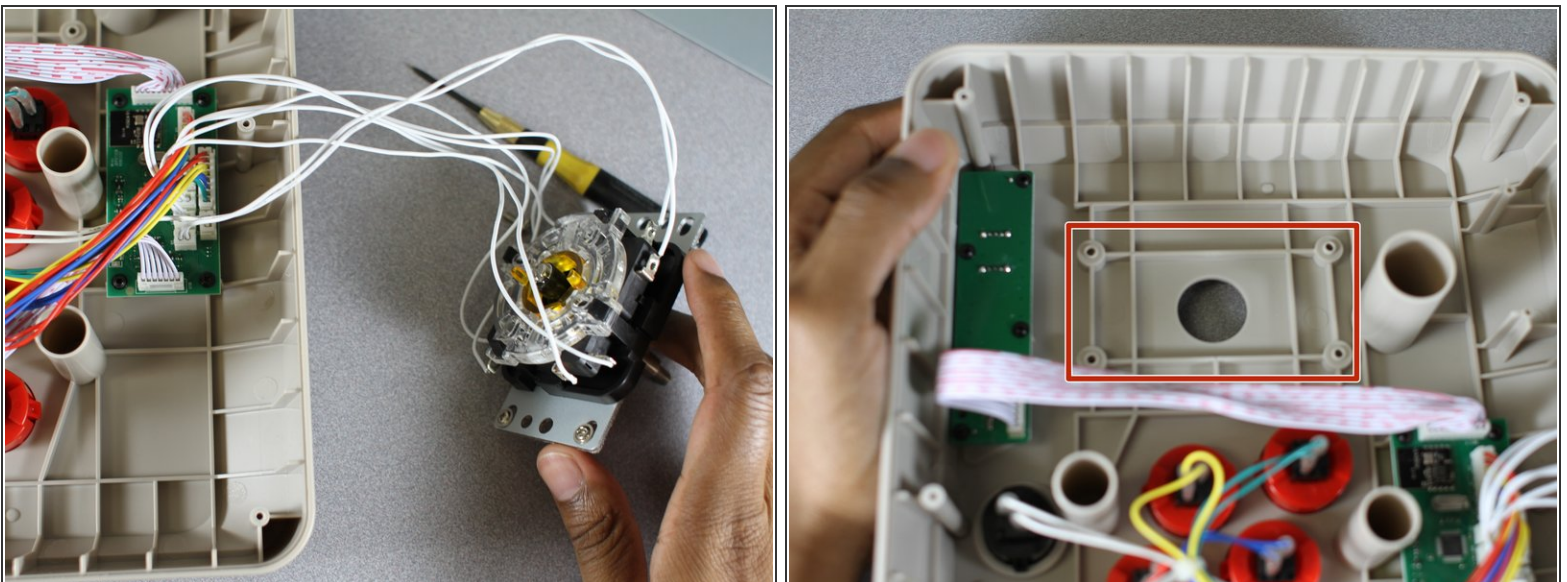


- Locate the joystick wires that are attached to the four plugs on the motherboard and disconnect them.

 In fine print, "left," "down," "up," and "right" are found above the wires that need to be removed.

 Take caution and gently disconnect the wires.

## Step 7



- Remove the back piece from the mounting plate.
- Replace the joystick's back piece.

Follow the steps in reverse order to install the new joystick.

*Once again, don't forget the rubber slider for the back panel.*

Boot up your favorite PC or Nintendo Switch fighting game and make sure your joystick works!