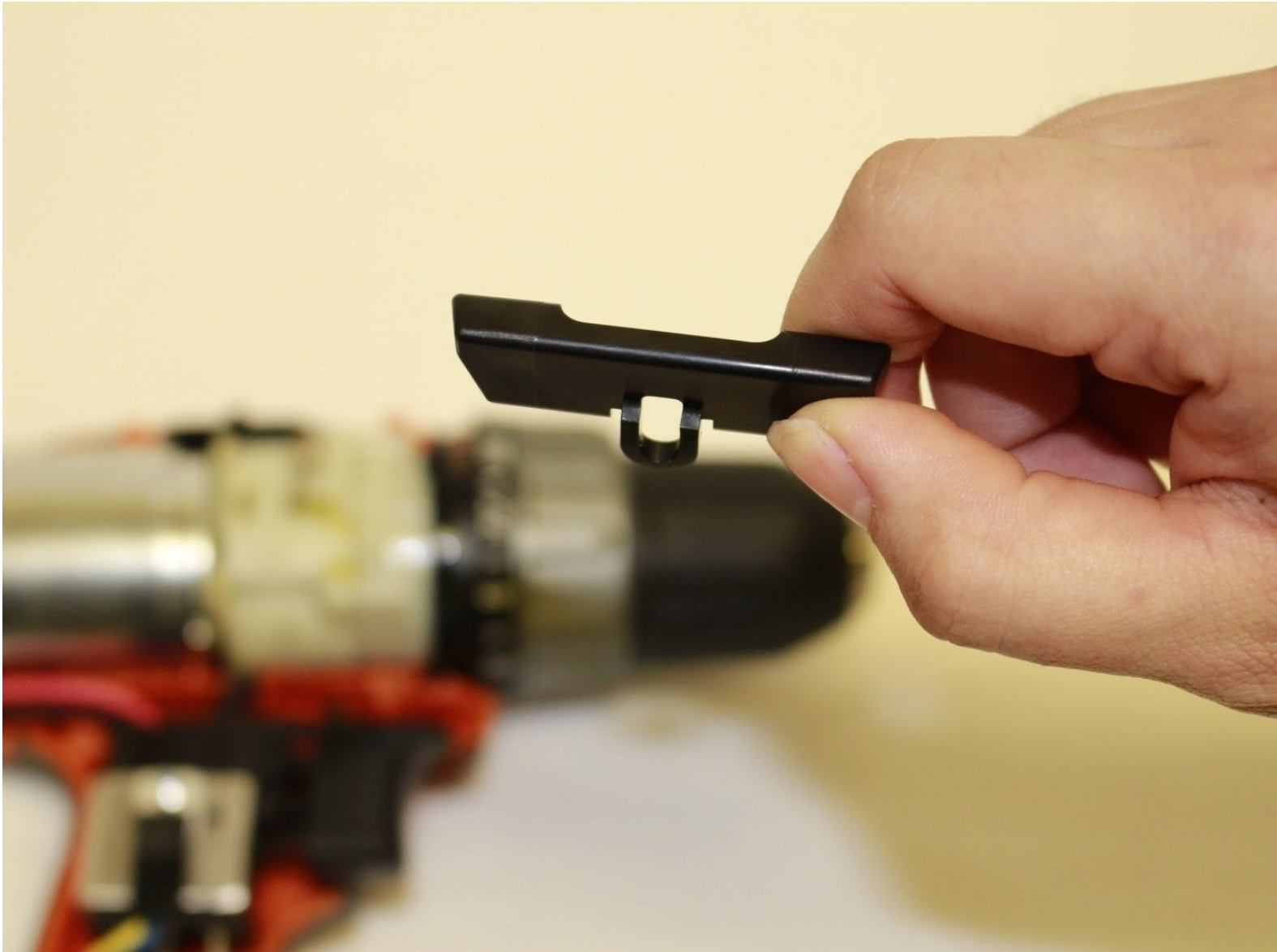




# RIDGID R860052 Direction of Rotation Selector Replacement

Use this guide to learn how to replace the direction of rotation selector in your RIDGID R860052.

Written By: Anna Wu



---

## INTRODUCTION

If your drill continues to turn in an opposite direction you desire or does not turn at all, this guide will provide you guidance to the process of replacing the dysfunctional direction of rotation selector in a RIDGID R860052.



### TOOLS:

- [T10 Torx Screwdriver](#) (1)
-

## Step 1 — Direction of Rotation Selector



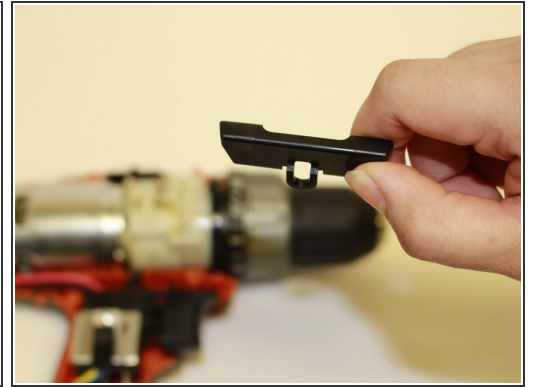
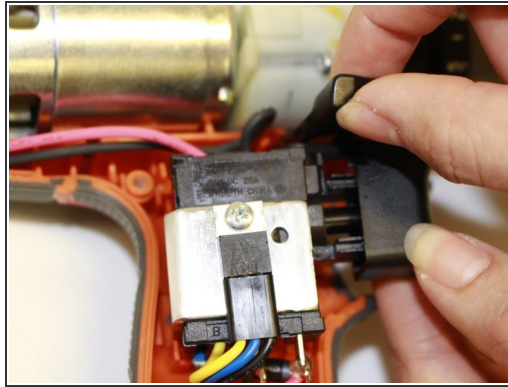
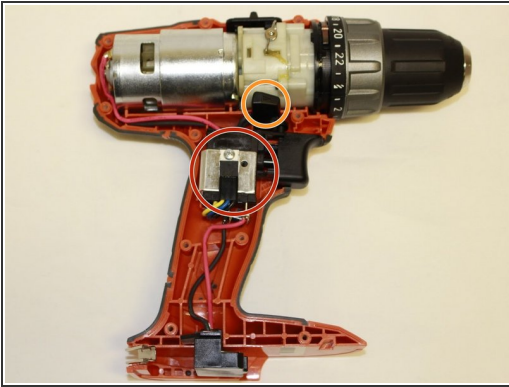
- ❗ Remove the battery from the drill before you begin.
- Use a T10 Torx screwdriver to remove the ten screws on the information label side of the drill.
- ❗ These ten screws are 19 mm long.

## Step 2



- Lift off and remove the cover with the informational label.

## Step 3



- Lift up the switch assembly.
- Unhook the rotation selector from the drill cover and replace with a new one.

To reassemble your device, follow these instructions in reverse order.