



Motorola MBP667CONNECT Battery Replacement

Replacing the battery in a Motorola MBP667CONNECT monitor.

Written By: Kyle Kramer



INTRODUCTION

In case of depleting battery life and battery damage, this guide is for consumers who need to replace the battery of their Motorola MBP667CONNECT baby monitor.



PARTS:

- [JUSTHIGH Ni-MH Battery AAA 3.6V 900mAh](#) (1)
-

Step 1 — Battery



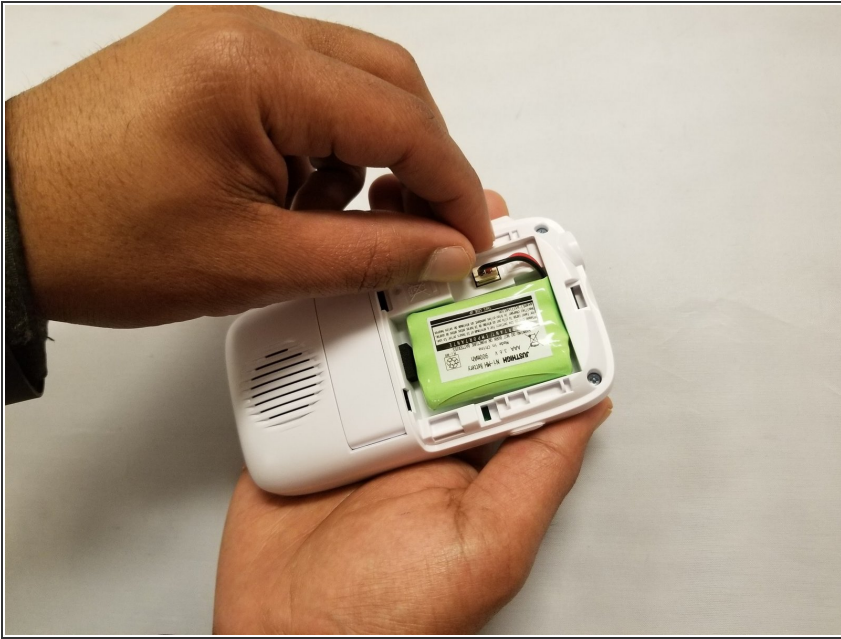
- The battery casing is on the back of the monitor housing.

Step 2



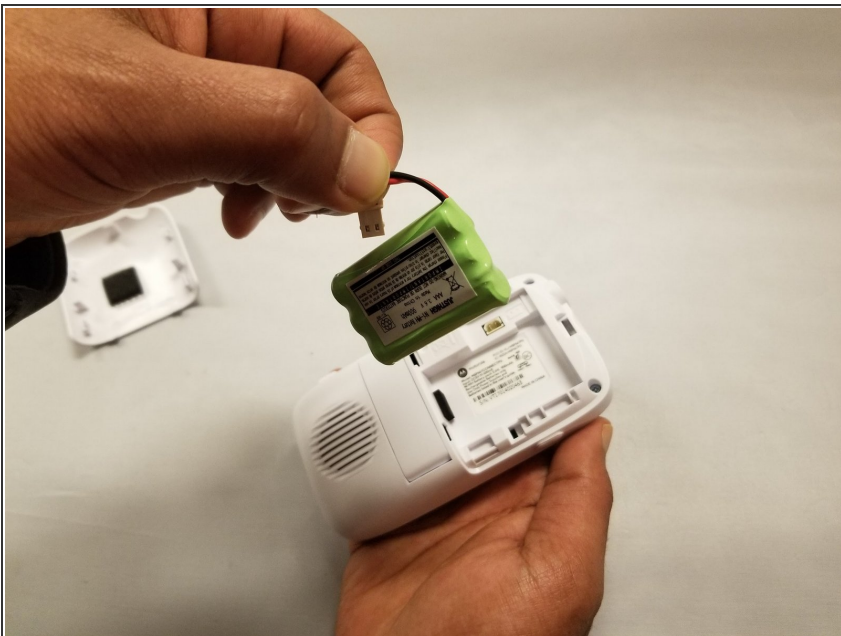
- Notice the little crevice at the bottom of the baby monitor. This is how the lid is removed. Simply put pressure with your finger to the crevice and lift.
- Remove the battery casing lid from the back of the monitor housing.

Step 3



- There is a plastic part connecting the wires of the battery to the device.
- Disconnect the battery wiring from the monitor battery connection.

Step 4



- Remove and discard the old battery and replace it with a new battery.

To reassemble your device, follow these instructions in reverse order.