



Sony D-822K Car Discman Teardown

Written By: modem21



INTRODUCTION

I'm going to dissect an old friend, my first disc player. It is hoped that this teardown, while exposing the hydro-suspension and green-amber lighting, will reveal an awesomeness worthy of a Sony PS3 Slim (Gadget Lab Contest).

TOOLS:

- [jumper puller](#) (1)
 - [Phillips #00 Screwdriver](#) (1)
-

Step 1 — Sony D-822K Car Discman Teardown



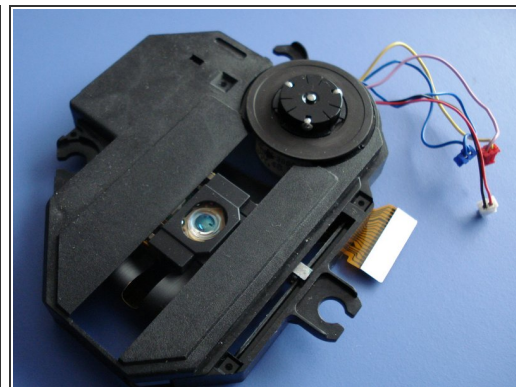
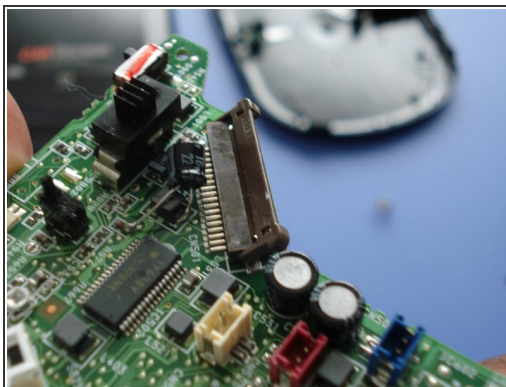
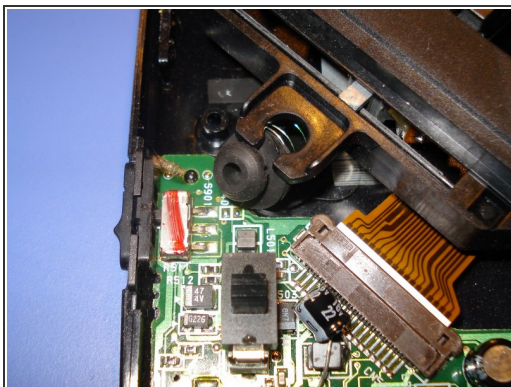
- Obtain a D822-K Discman and remote. True, it has DSP and Surround Sound, but the 90's have come and gone. It's okay to take it apart.

Step 2



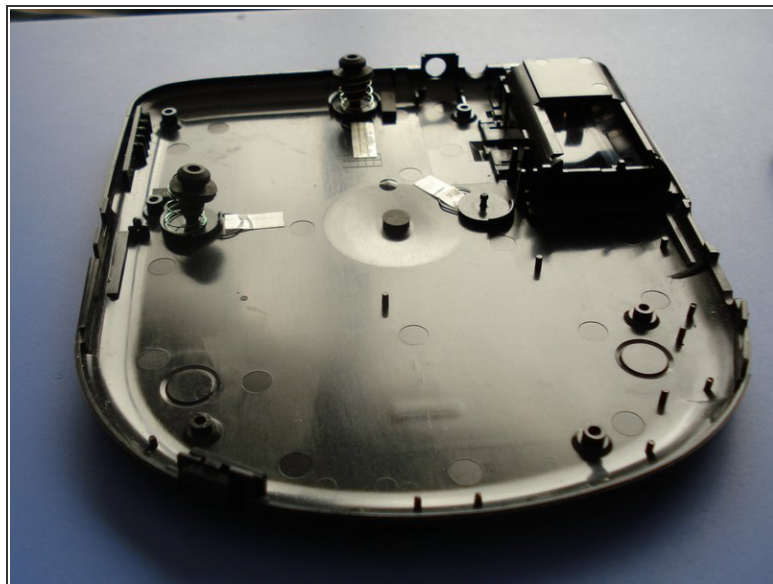
- Position unit so that the bottom is facing up. Remove the 6 screws.
- Hold top and bottom of unit together as you turn the unit over, bottom facing down. Use caution; the upper and lower case, along with circuit board are now loose.
- Watch out for the AVLS and illumination switches, they love to disappear when unsupervised. Remove top of case.

Step 3



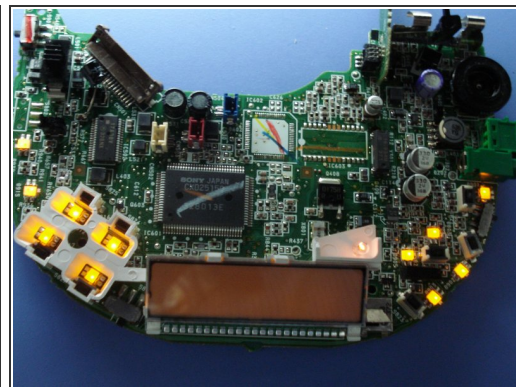
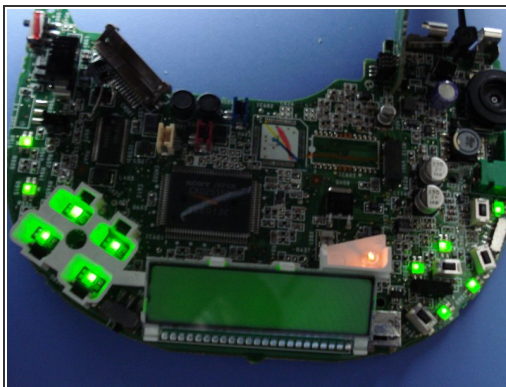
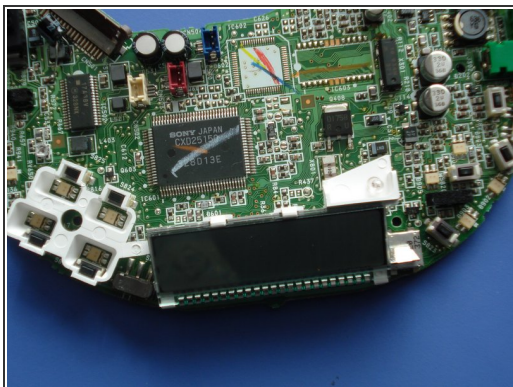
- Removing the CD reader: Gently pull all 3 rubber grommets sideways, away from the CD reader.
- Slide edge of ribbon cable connector towards ribbon cable to disengage.
- Unplug the red, white, and blue plugs from the circuit board.

Step 4



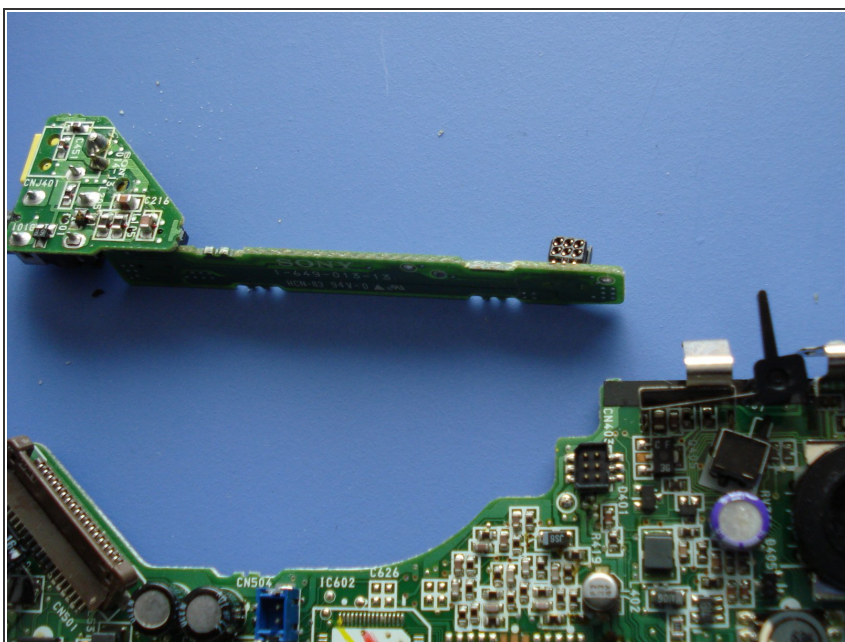
- Observation: This is the Hydro Suspension system...really.

Step 5



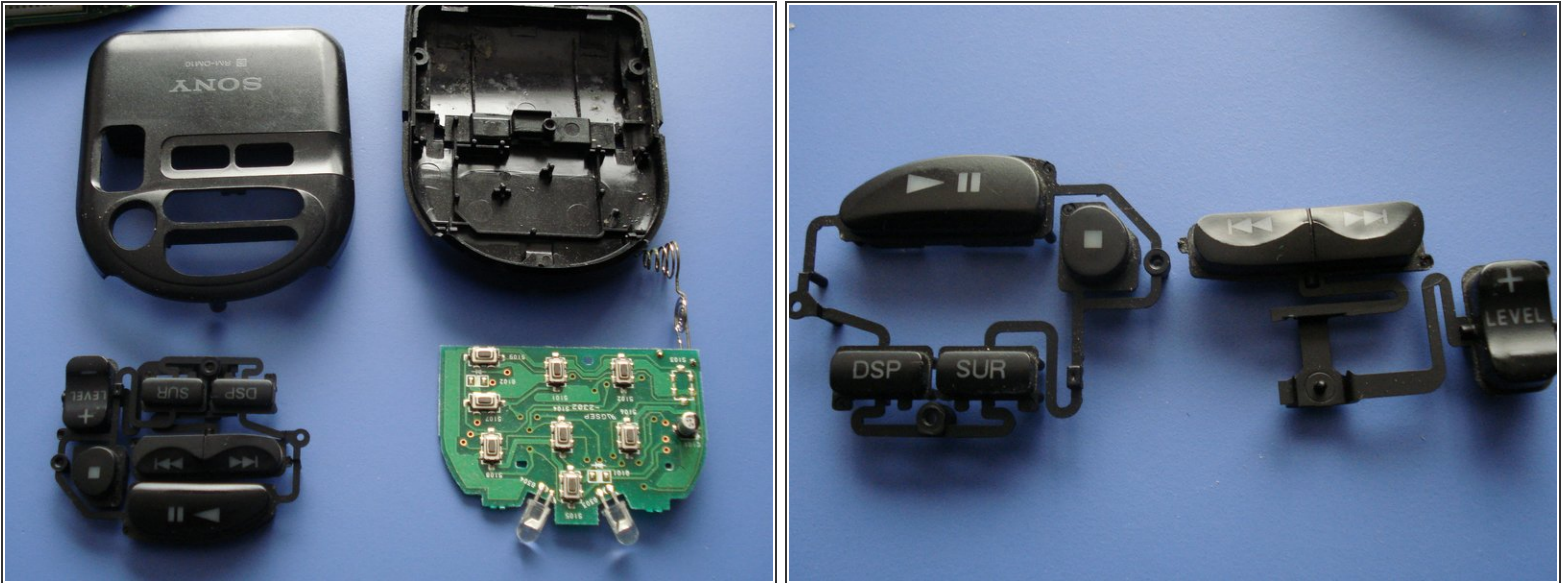
- Remove circuit board
- Notice the dual-color light modules. (I temporarily connected the power to show off the lights)

Step 6



- Disconnect tailpiece, and power supply.

Step 7



- Remote: Remove the 3 screws from the bottom. Pull apart.
- The function buttons have a neat overlay design.

Step 8



- Completely disassembled. The illumination button was lost for two weeks after reassembling... but who uses amber lights anymore?

To reassemble your device, follow these instructions in reverse order.