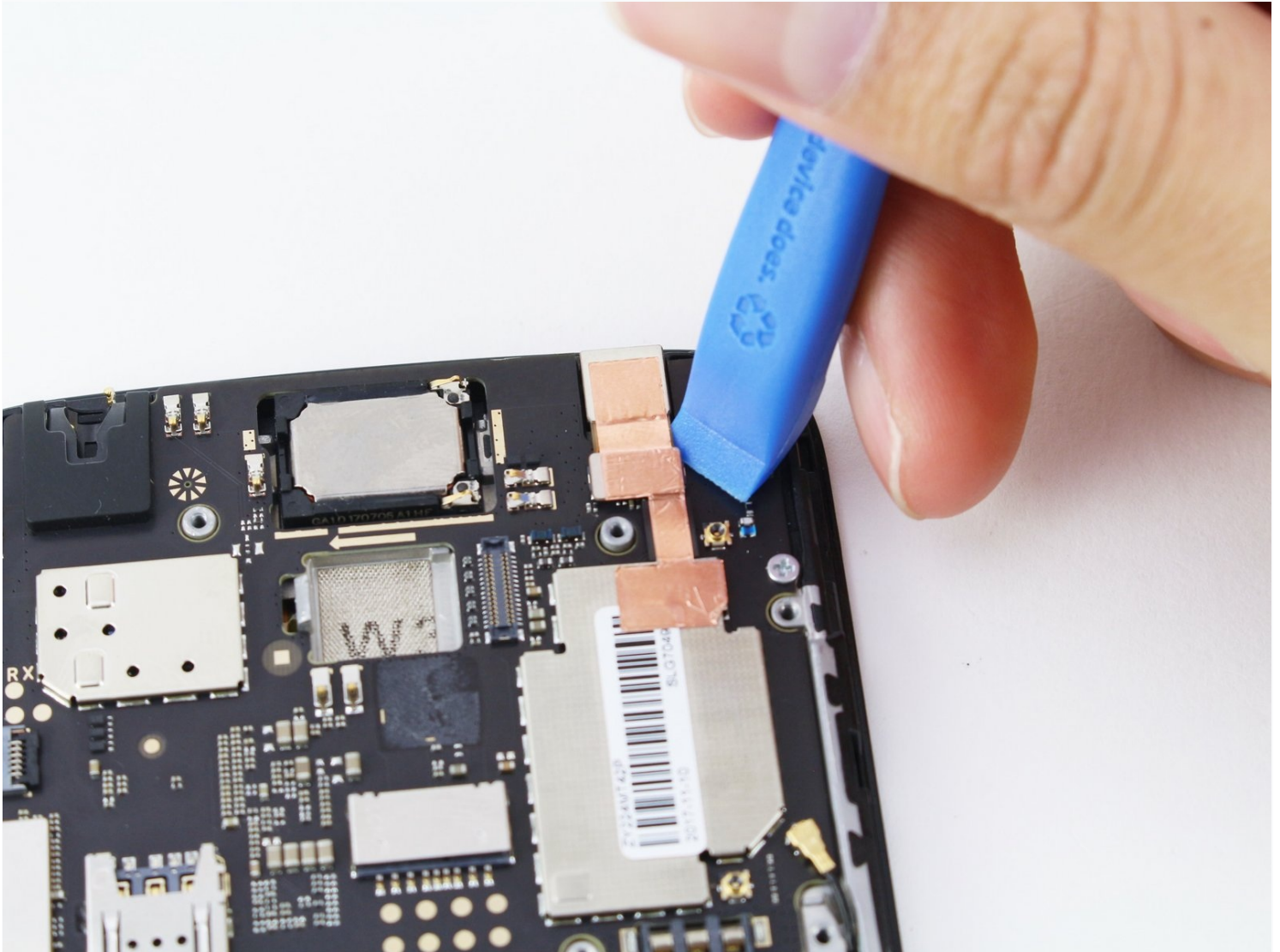




Motorola Moto E4 Front Facing Camera Replacement

Use this guide to remove or replace the Moto E4...

Written By: Nate Tjepkema



INTRODUCTION

Use this guide to remove or replace the Moto E4 front facing camera.

Before you begin, download the [Rescue and Smart Assistant](#) app to backup your device and diagnose whether your problem is software or hardware related.

TOOLS:

[iFixit Opening Tool](#) (1)

[Phillips #00 Screwdriver](#) (1)

Step 1 — Remove the rear cover



 Before removing the battery, power off your Moto E4.

- Remove the plastic cover by gently prying it up from the notch at the bottom right corner of the phone.
- With the phone face down, lift the battery up by the labeled tab and remove it from the device.

Step 2 — Motherboard Cover



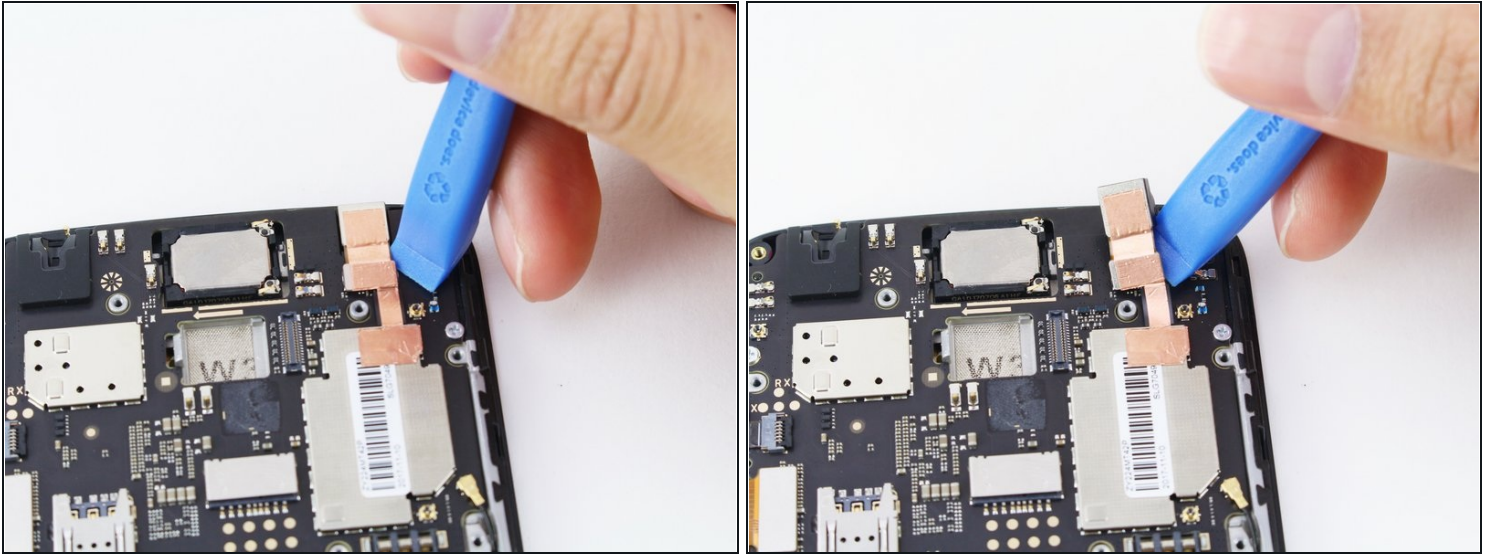
- Remove all nine 4mm screws from the top plastic cover with a Phillips driver.

Step 3



- Gently pry up the plastic cover from the gap between it and the phone edge.
 - Start on the right side as indicated by the first picture.
 - Continue prying around the rest of the cover in a counter clockwise path.
- Once loose, remove the plastic cover from the phone.

Step 4 — Front Facing Camera



- Detach the front facing cable ribbon connector using an iFixit opening tool and lift the camera out of position.

⚠ To completely remove the front facing camera from the phone, the copper colored adhesive must be torn. The camera will still with the adhesive removed, but there may be unknown side effects.

To reassemble your device, follow these instructions in reverse order.