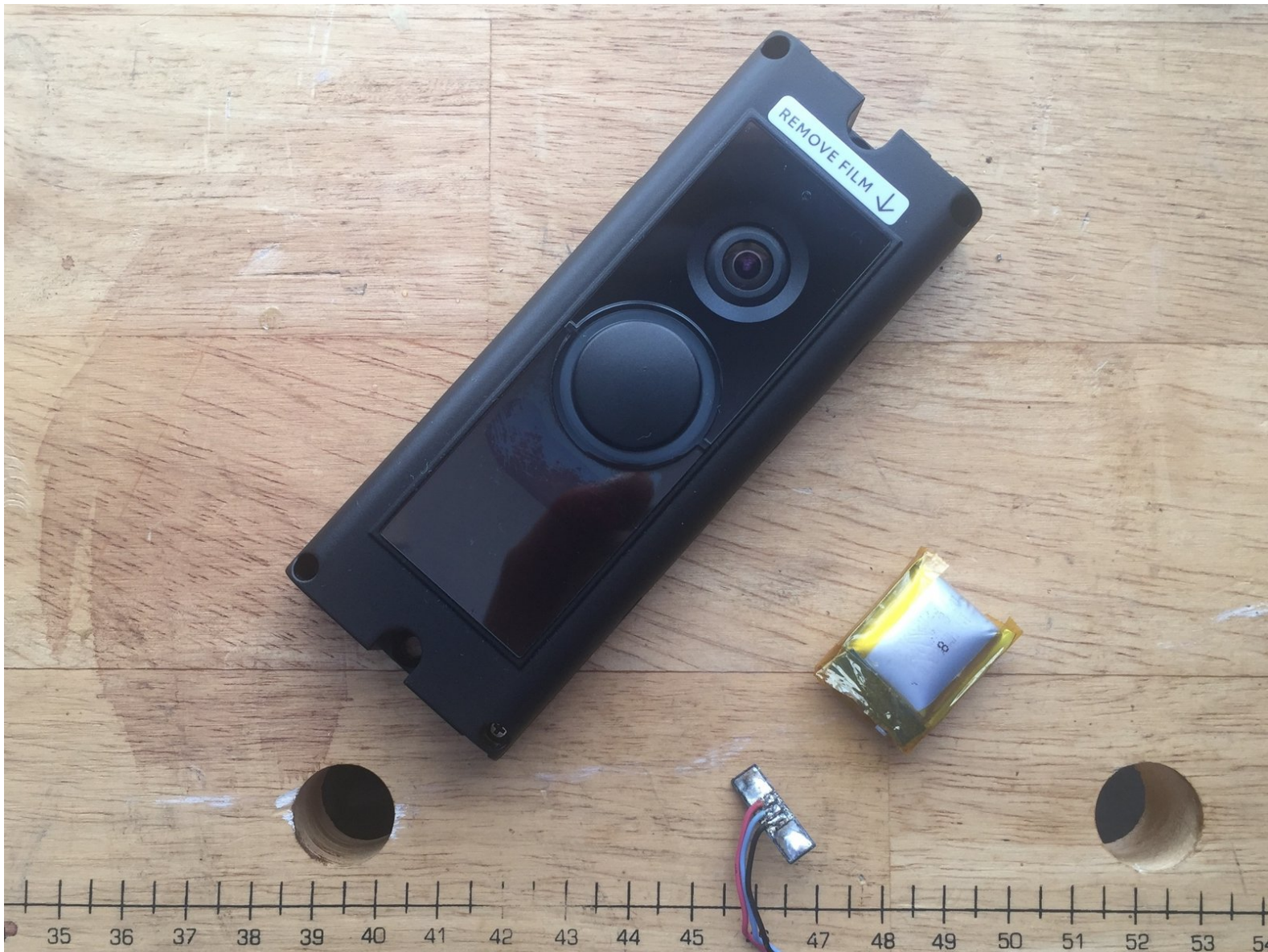




Ring Video Doorbell Pro Battery Replacement

This guide shows how to replace the battery in a Ring Video Doorbell Pro.

Written By: Matthew Bishop



INTRODUCTION

Countless Ring Video doorbell Pros have failed to work as intended due to a faulty internal battery. The symptoms of this is usually a completely dead unit that will not respond to power or a unit that reboots unexpectedly, although there can be many other symptoms. Unfortunately, Ring doesn't sell the replacement battery and It cannot be found anywhere on the internet, so a generic 602025 3.7v Li-Po battery between 200mah and 300mah will have to be fitted. This guide will show you how to take the unit apart and replace the battery. As always, you can find the tools and parts you'll need to complete this repair in the respective sections below.



TOOLS:

- [Small Phillips Head Screwdriver](#) (1)
- [Soldering Workstation](#) (1)
- [Small Plastic Spudger](#) (1)
- [spray adhesive](#) (1)



PARTS:

- [3.7v 200mah Li-Po Battery, 602025](#) (1)

Step 1 — Battery



- First, disconnect and remove the doorbell from the house. Make sure the breaker for the doorbell is switched off at the electrical panel.
- Make sure the face-plate is removed since the screws holding the unit together are underneath it.

Step 2



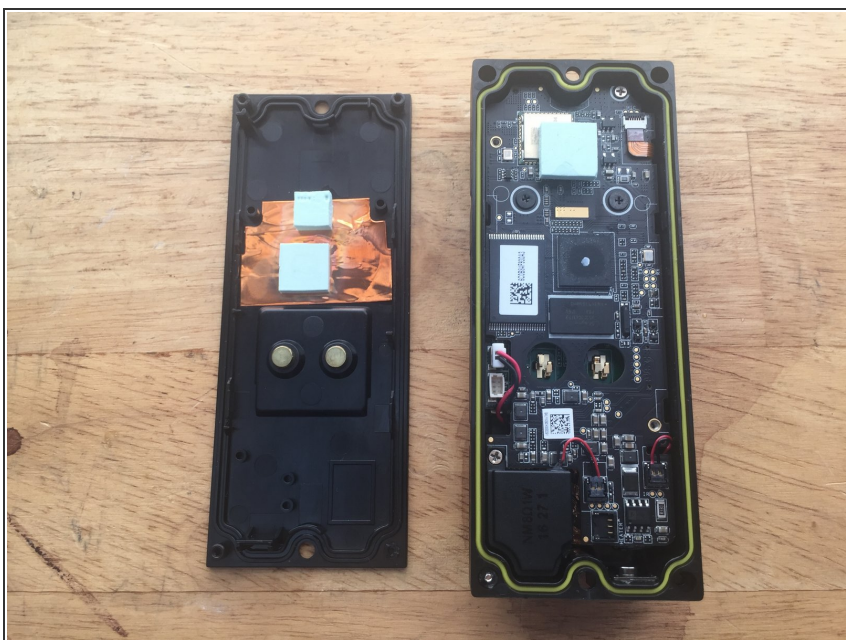
- Remove the four Phillips screws from the four corners of the device.
- ⓘ Let the screws fall out by gently turning the unit over. Don't lose the screws!

Step 3



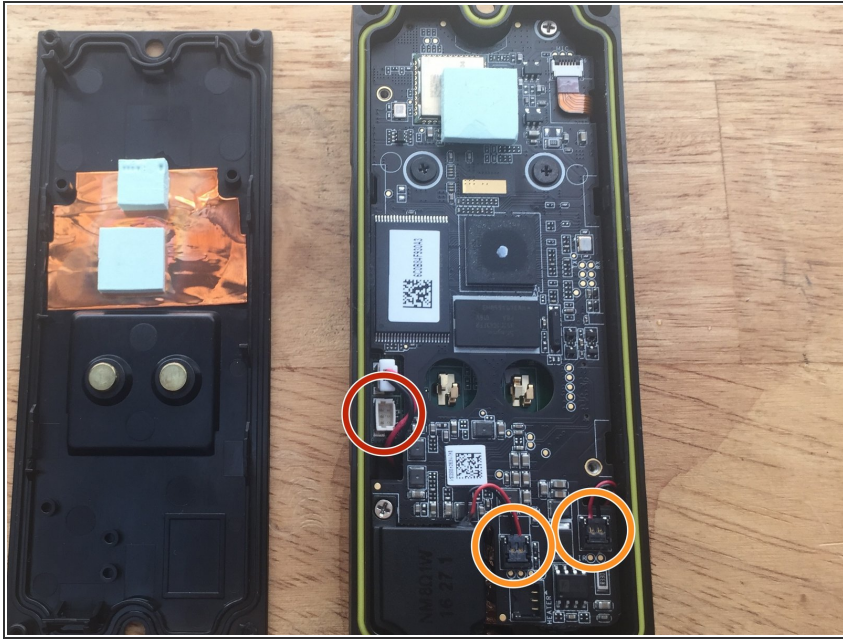
- Using a soft plastic spudger (prying tool), carefully pry the back cover of as shown at the picture.
- ⓘ It may take some force, but take it easy to not accidentally damage anything on the inside.

Step 4



- After the back has been removed, you should now be able to see the inside of the unit.

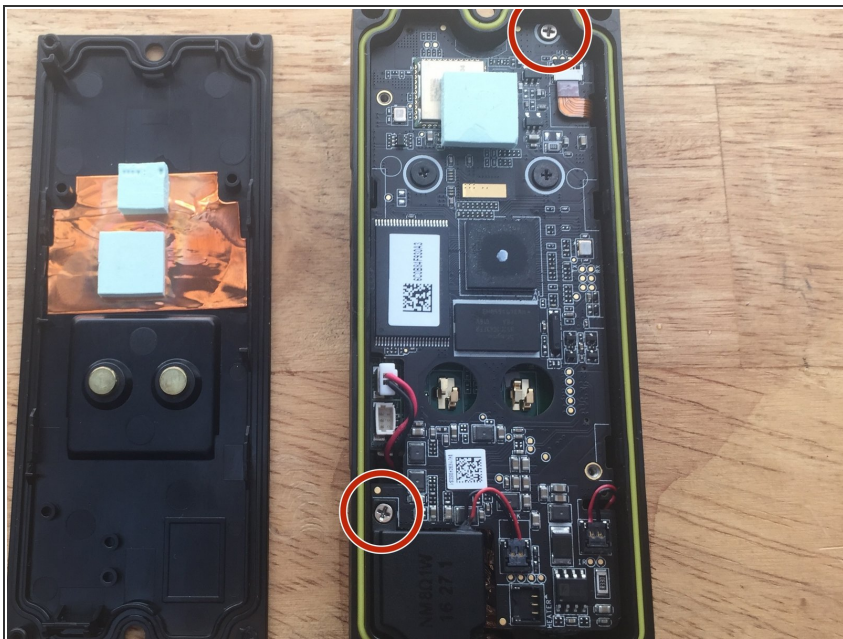
Step 5



⚠ Be careful when removing the small connectors. They may shatter if not handled properly. Work your way under the connector gently.

- Disconnect the battery connection with a plastic spudger by gently prying up from underneath the connector.
- i** The battery is already disconnected in this photo.
- Now do the same for the IR and heater connections

Step 6



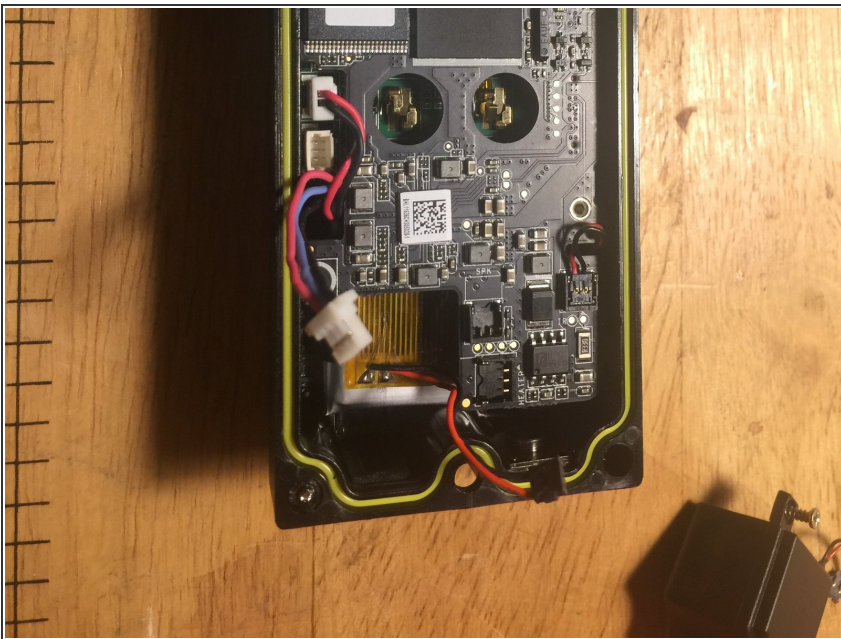
- Remove the two silver Phillips screws holding the motherboard in place.

Step 7



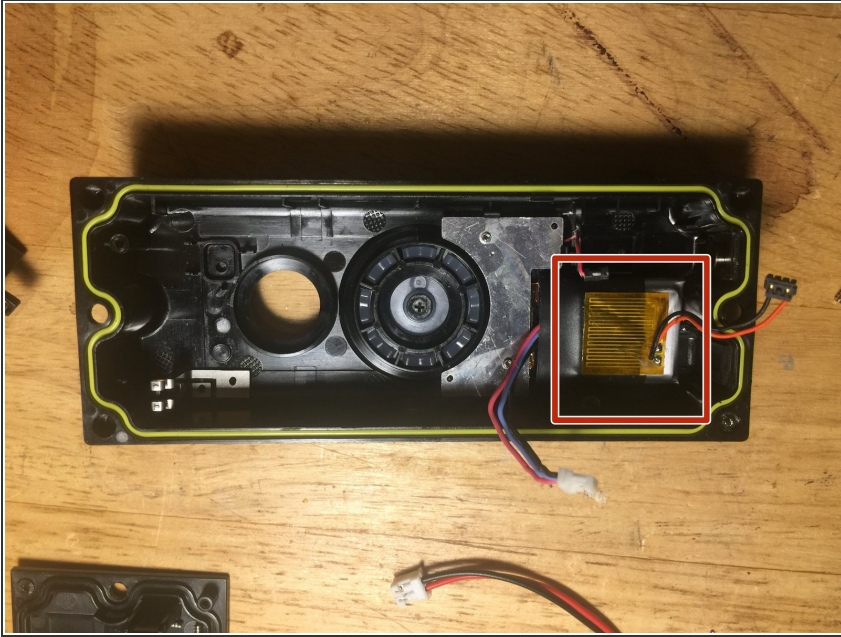
- Separate the speaker from the unit by tilting the unit over and letting it fall out.
- ⓘ If necessary, apply gentle force using a plastic spudger to get it out.

Step 8



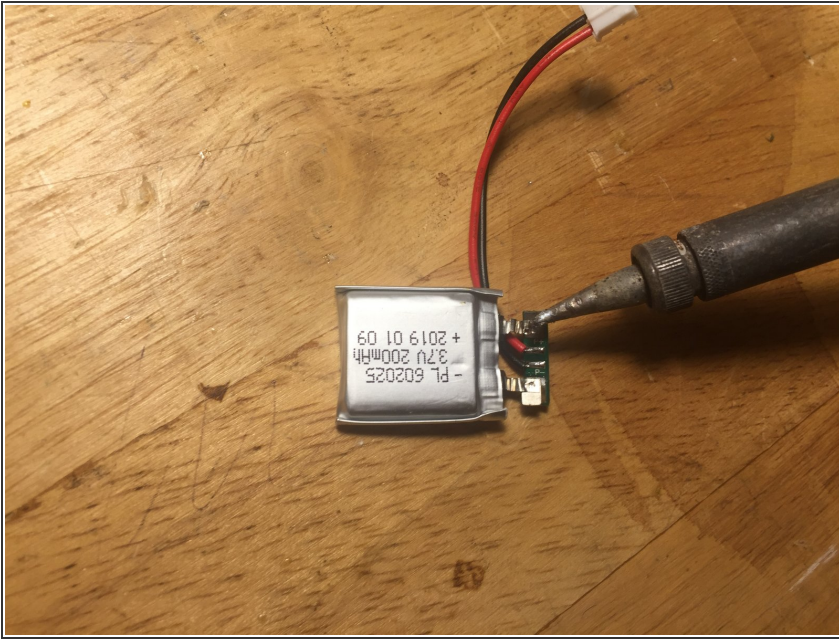
- Apply gentle pressure to the edges of the motherboard to pry it loose from the casing and lift it out.
- ⓘ You should feel a small amount of resistance as there is a small bit of adhesive present holding the motherboard in place.

Step 9



- Remove the battery by applying gentle to moderate force to pry it away from the casing. There is some adhesive holding it in place.
- ⓘ There is a small strip of metal tape underneath the battery. Try to keep this tape intact.

Step 10



⚠ You need to be **very careful** on this step, if you touch the battery with the soldering iron the battery may **explode**.

⚠ Do **NOT heat** up the battery too much or it may also **explode**, you need to be quick doing the soldering.

- Remove the clear tape from the old battery.
- De-solder the old battery circuit from the old battery.

ⓘ You will need this circuit, so be careful not to damage it!

- De-solder the battery circuit that comes with the new cell, and solder the battery circuit from the old ring battery to the new battery. This will convert your new cell to a cell compatible with the Ring's charging circuitry.

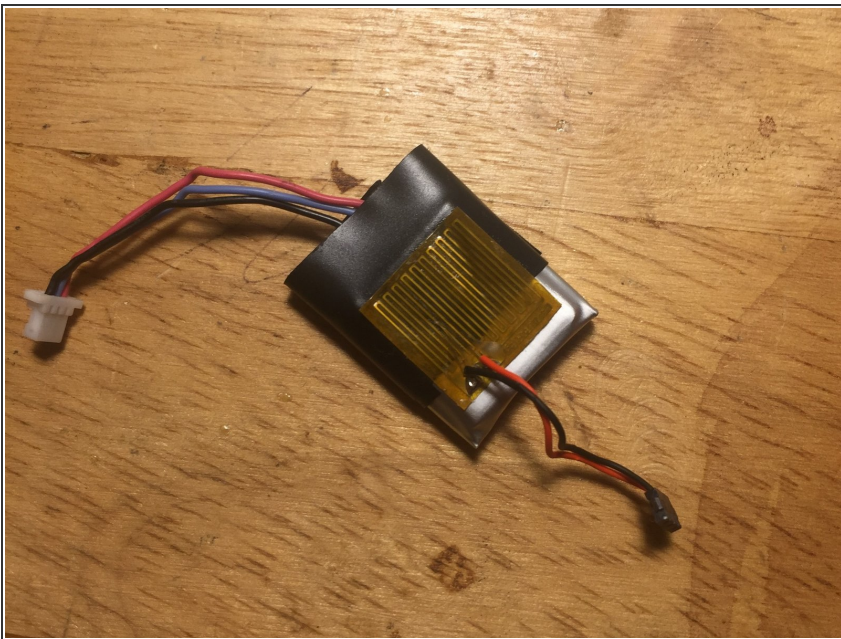
★ Make sure to observe polarities. The solder pad with the red wire next to it goes to the '+' poll on the battery, and the solder pad with the black wire goes to the '-' poll on the battery.

Step 11



- After the necessary soldering has been done, carefully fold the battery circuit to where it is tucked into the battery.

Step 12



- After this, cover up the battery circuitry with some electrical tape, this will prevent shorts.
- Remove the heater pad from the old battery, and attach it to the new battery with some spray adhesive.

To reassemble your device, follow these instructions in reverse order.