



# Google Pixel 2 XL Midframe Replacement

Prerequisite-only guide to remove the midframe in a Google Pixel 2 XL.

Written By: Adam O'Camb



---

# INTRODUCTION

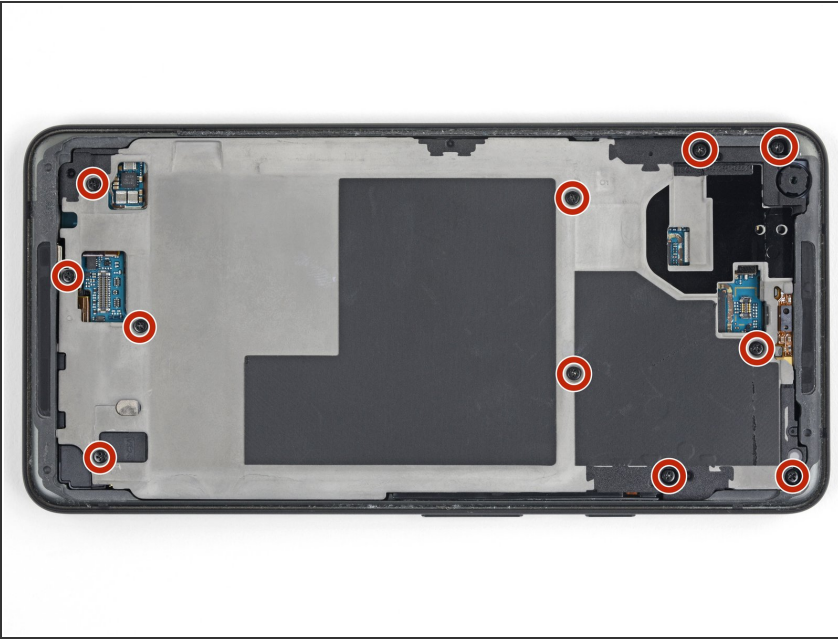
Prerequisite-only guide to remove the midframe in a Pixel 2 XL.



## TOOLS:

- [Essential Electronics Toolkit](#) (1)
-

## Step 1 — Midframe



- Remove eleven 3.8 mm Phillips screws securing the midframe.
- ☑ Throughout this repair, [keep track of each screw](#) and make sure it goes back exactly where it came from.

## Step 2



- Insert an opening tool into the notch in the midframe near the volume buttons and pry the midframe up and away from the rest of the phone.
- Remove the midframe.

To reassemble your device, follow these instructions in reverse order.