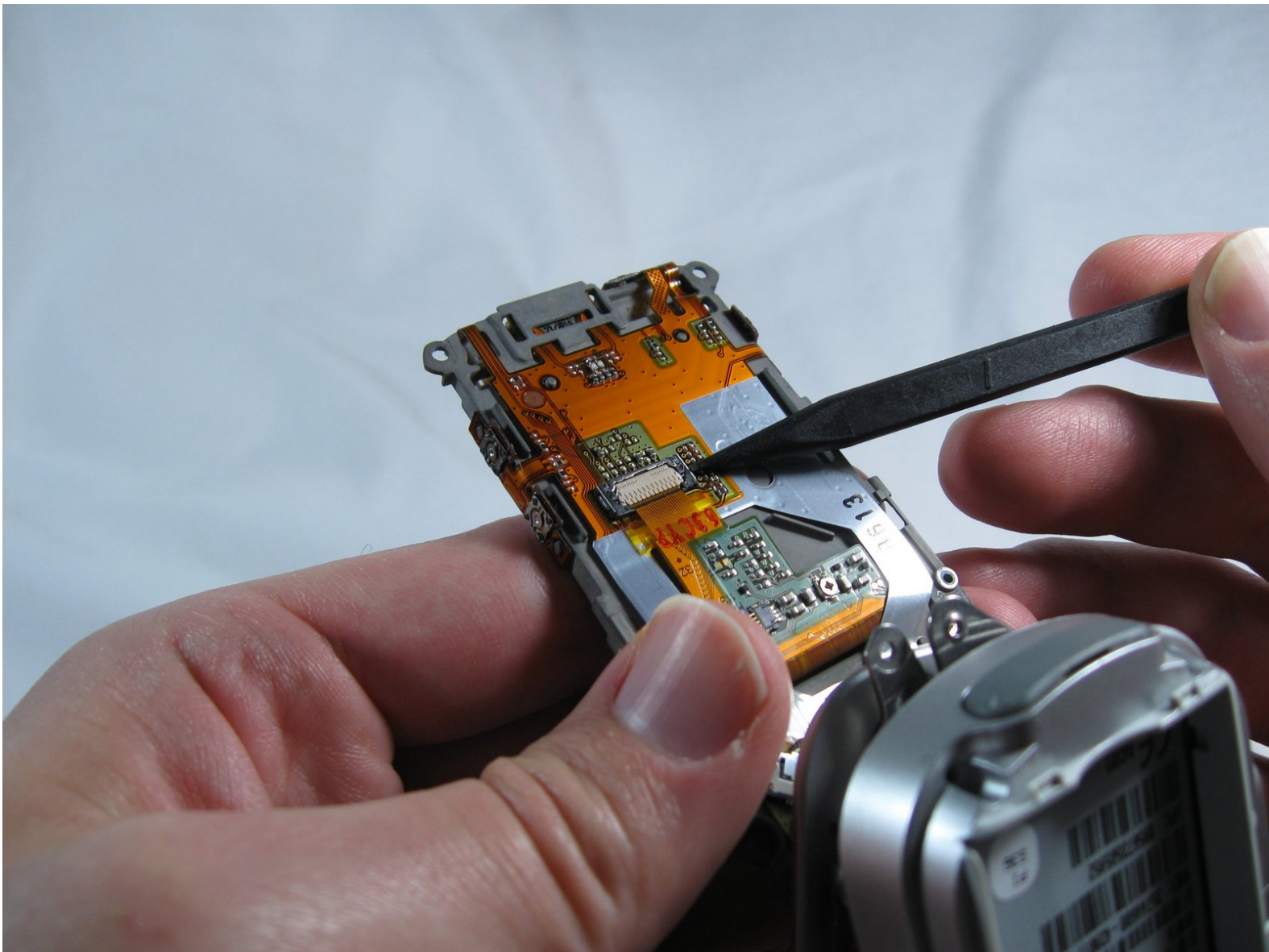




Sony Ericsson w600i LCD Replacement

Replacing a faded, broken, or otherwise malfunctioning LCD display.

Written By: Beau Blanchard





TOOLS:

- [precision screw drivers](#) (1)
- [Spudger](#) (1)
- [T5 Torx Screwdriver](#) (1)
- [Tweezers](#) (1)

Step 1 — Disassembling Sony Ericsson w600i Battery Cover



- Grip the lower portion of the back of the phone and slide downwards.

Step 2 — Battery



- Lift battery at the rounded notch near the bottom of the phone.

Step 3 — Back housing



- Unscrew the four Torx screws from the backplate.
- The backplate may begin to separate from the keypad face. Do not try to remove it yet.
- The screws are T5 Torx screws, 5.6mm.

Step 4



- Swivel the phone open.

Step 5



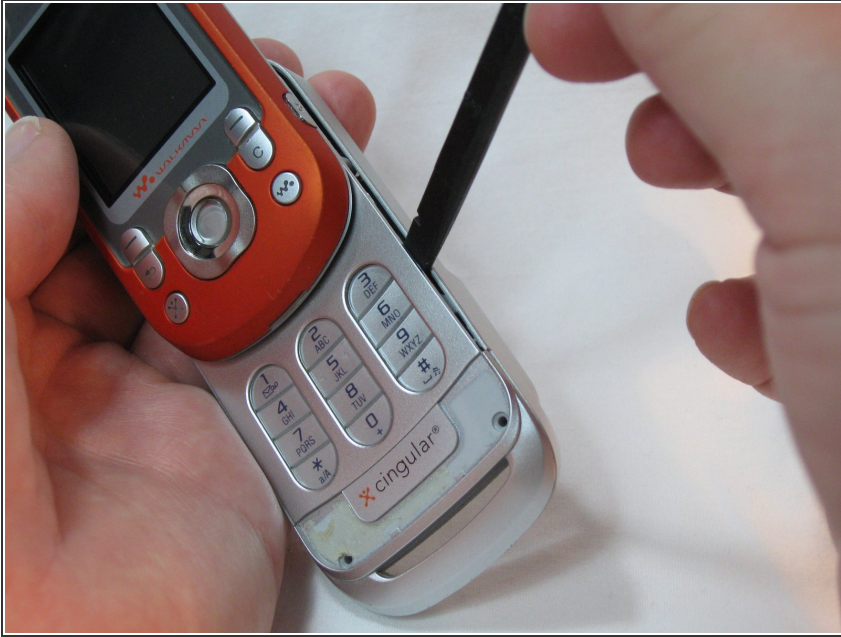
- Using the Spudger, gently pry up the U-shaped grey cover below the keypad.
- ☑ The cover is secured with adhesive tape. The gentler this is removed, the easier it will be to reassemble.

Step 6



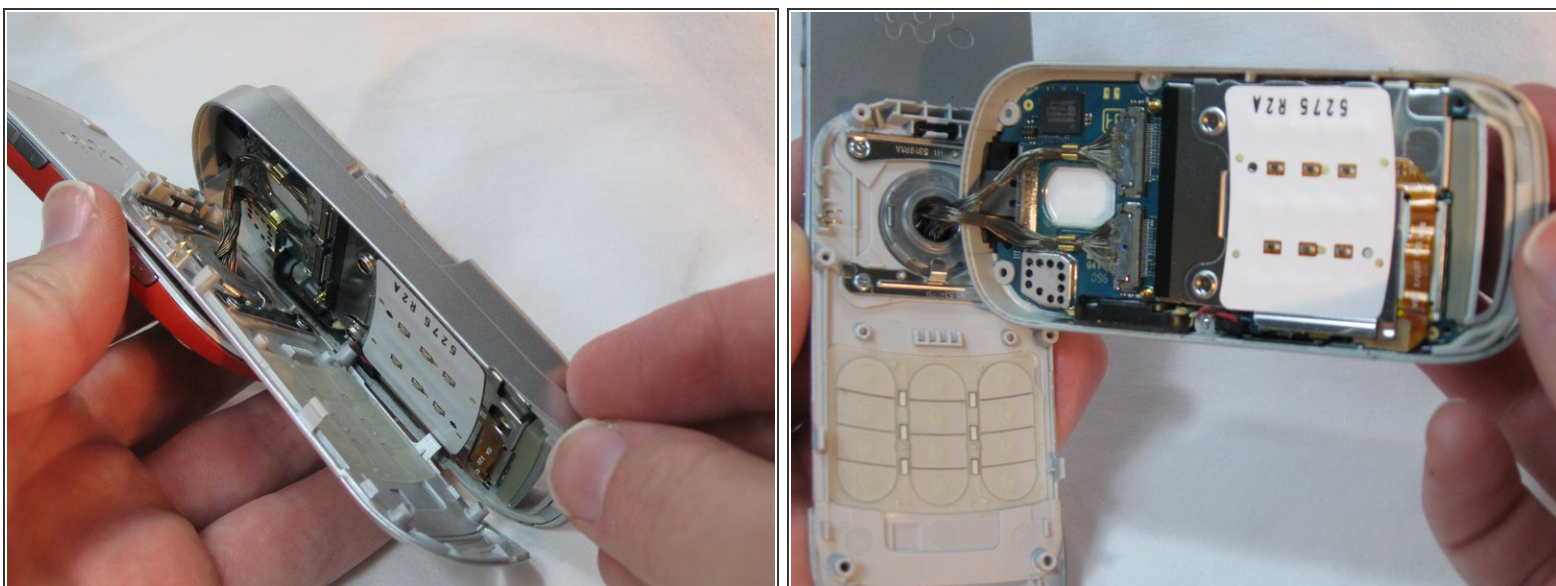
- Remove the two Torx screws from below the cover.
- These are T5 Torx screws, 8.6mm.

Step 7



- Gently work a spudger or a fingernail between the keypad face and the backplate.
- ⓘ The pieces are clipped together most tightly at the bottom loop section.

Step 8



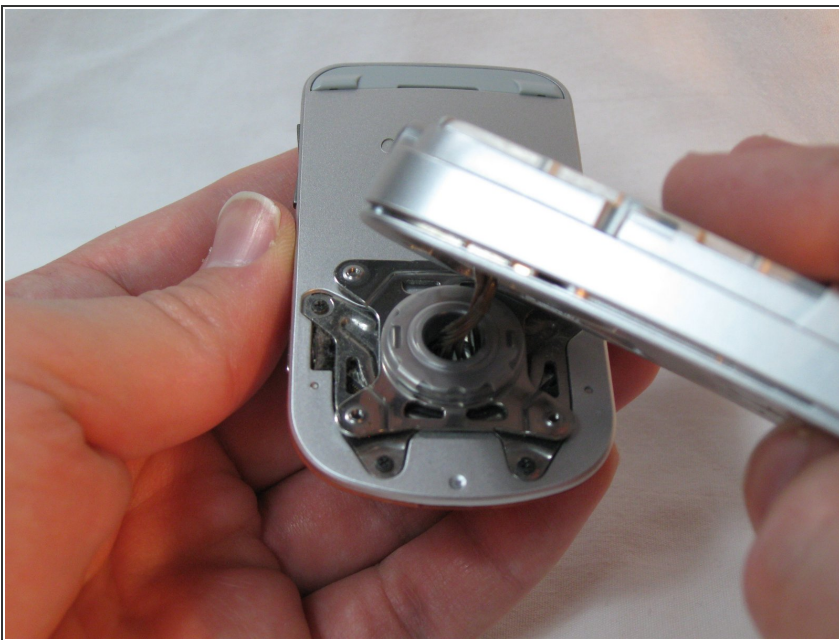
- Separate the keypad face from the backplate.
- ⓘ The keypad keys and the button component are both loose inside the phone, so take note of their orientation in case they become dislodged.
- ✦ Take note of the braided cord's state. Upon reassembly it should be returned to the same orientation.

Step 9



- Holding the backplate away from the swivel, remove the 4 small Phillips screws and both stamped struts from the swivel assembly.
- Note that only the bottom strut has a tab.
- The screws are Phillips, 2.9mm

Step 10



- The back housing is now disassembled, and the swivel assembly is revealed.

Step 11 — LCD Section



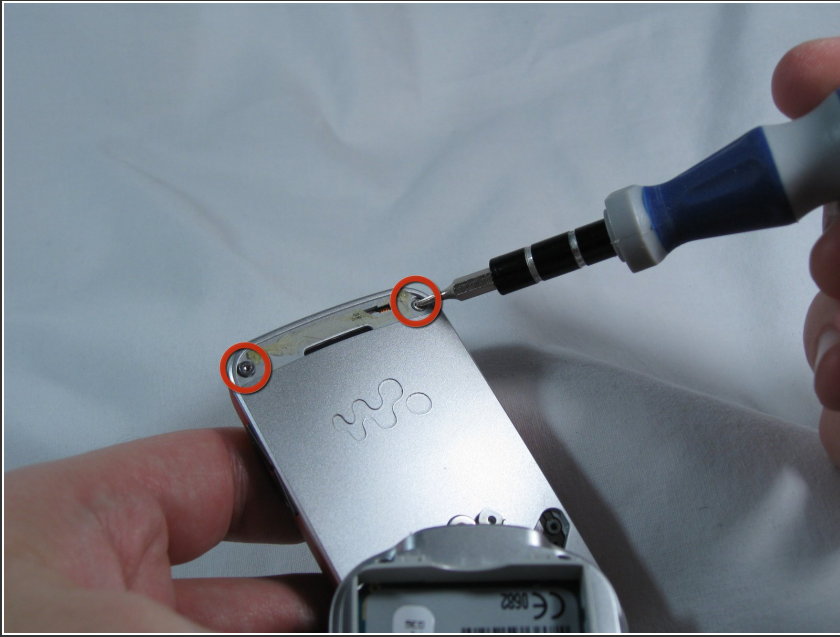
- Remove the four black Phillips screws holding the swivel assembly to the LCD section of the phone.
- ⓘ Be mindful of the screws, as they are very small.
- The screws are Phillips, 2.4mm

Step 12



- Gently remove the grey plastic cover at the top-rear of the LCD section with a spudger.
- ★ It is secured with adhesive tape, the more gently you remove this piece, the easier reassembly will be later.

Step 13



- Remove the two Torx screws revealed under the grey cover.
- The screws are Torx T5, 5.6mm

Step 14



- Gently pry off the front face, starting at the bottom slot.

Step 15



- Remove the Torx screws near the buttons.
- The screws are Torx T5, 5.6mm

Step 16



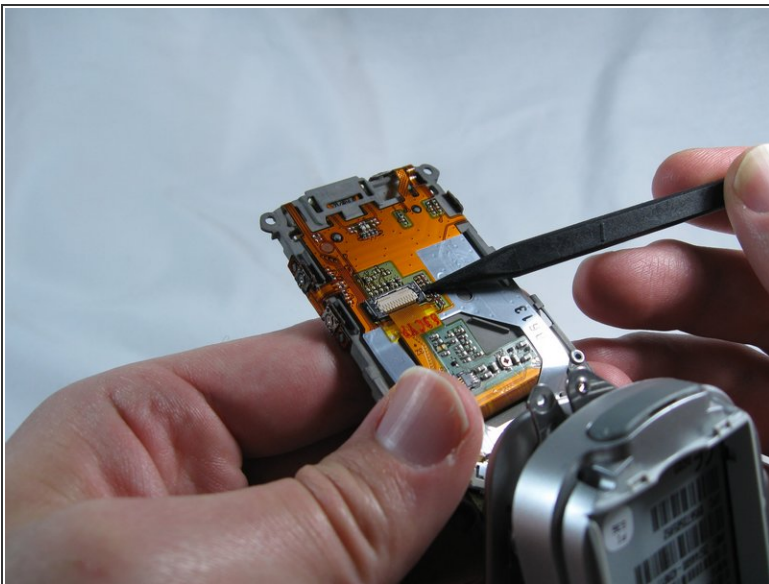
- Remove the black front plate.
- Remove the button overlay, taking note of its position for reassembly. There are small grey nubs that correspond to holes in the overlay.

Step 17



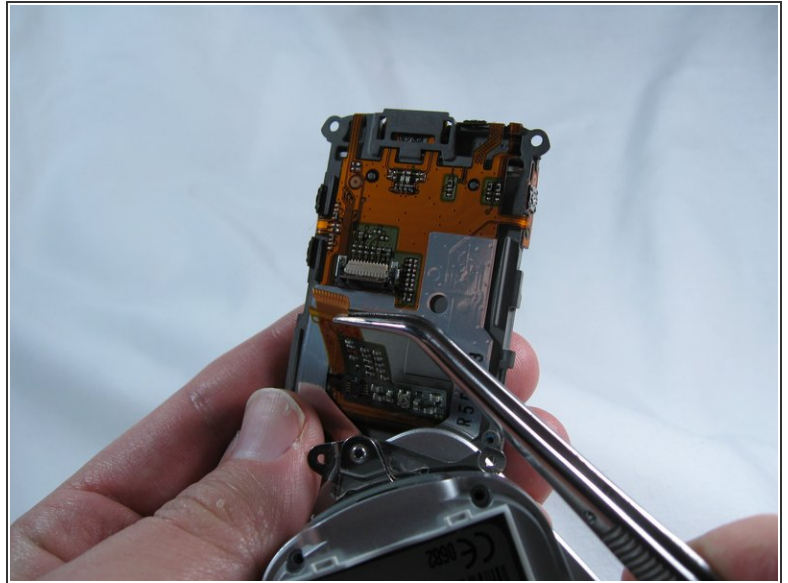
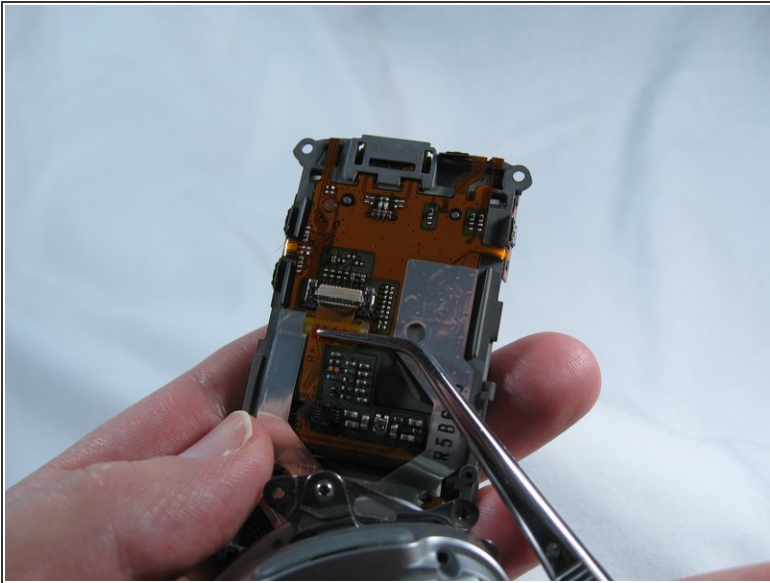
- Gently release the small grey retaining clips around the outside of the display assembly.
- Separate the display assembly from its backplate.
- ⓘ Take care; some of the side buttons may dislodge as the backplate is separated.
- The LCD section is now disassembled.

Step 18 — LCD Replacement



- The LCD display is connected to the device with a small flex cable. To release the cable, flip the small handle on the connector to an upright position.

Step 19



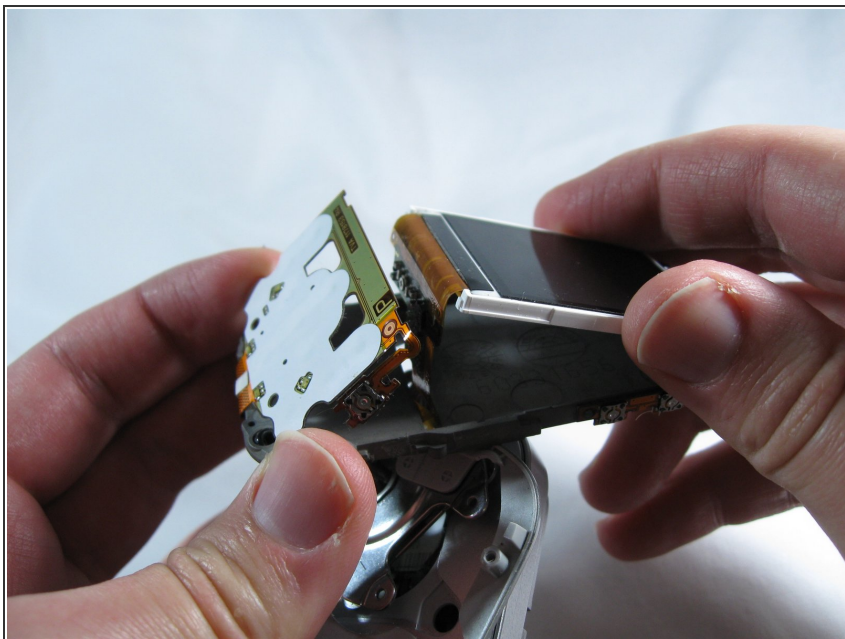
- Gently pull the flex cable downwards with a pair of tweezers.

Step 20



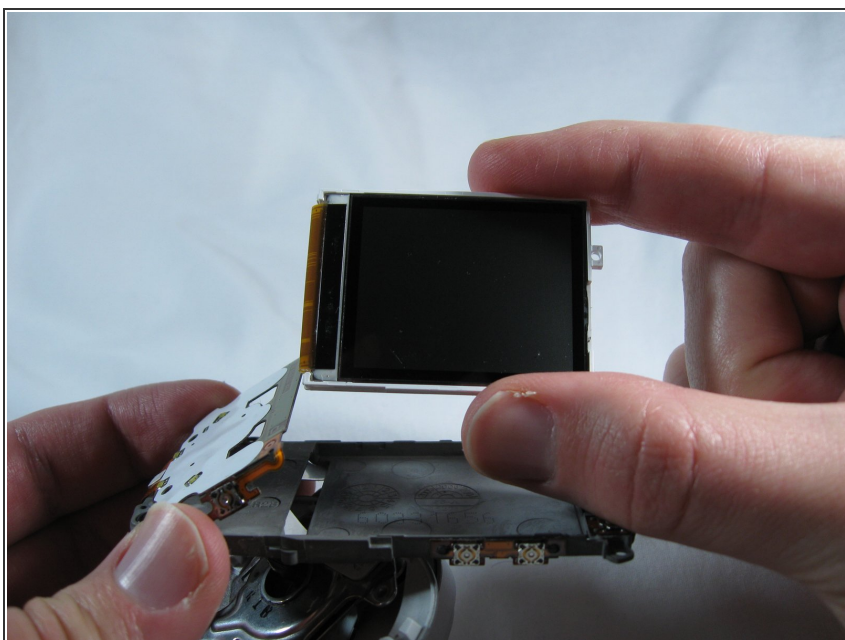
- Gently separate the side button component from the inner casing. It is attached with adhesive.
- Gently pull the front button component away from the inner casing slightly. It does not need to be removed.

Step 21



- Remove the LCD screen by its white housing, pulling the flex cable through the slot from the other side of the casing.

Step 22



- The LCD has been removed! It can now be replaced with a functioning display.

To reassemble your device, follow these instructions in reverse order.