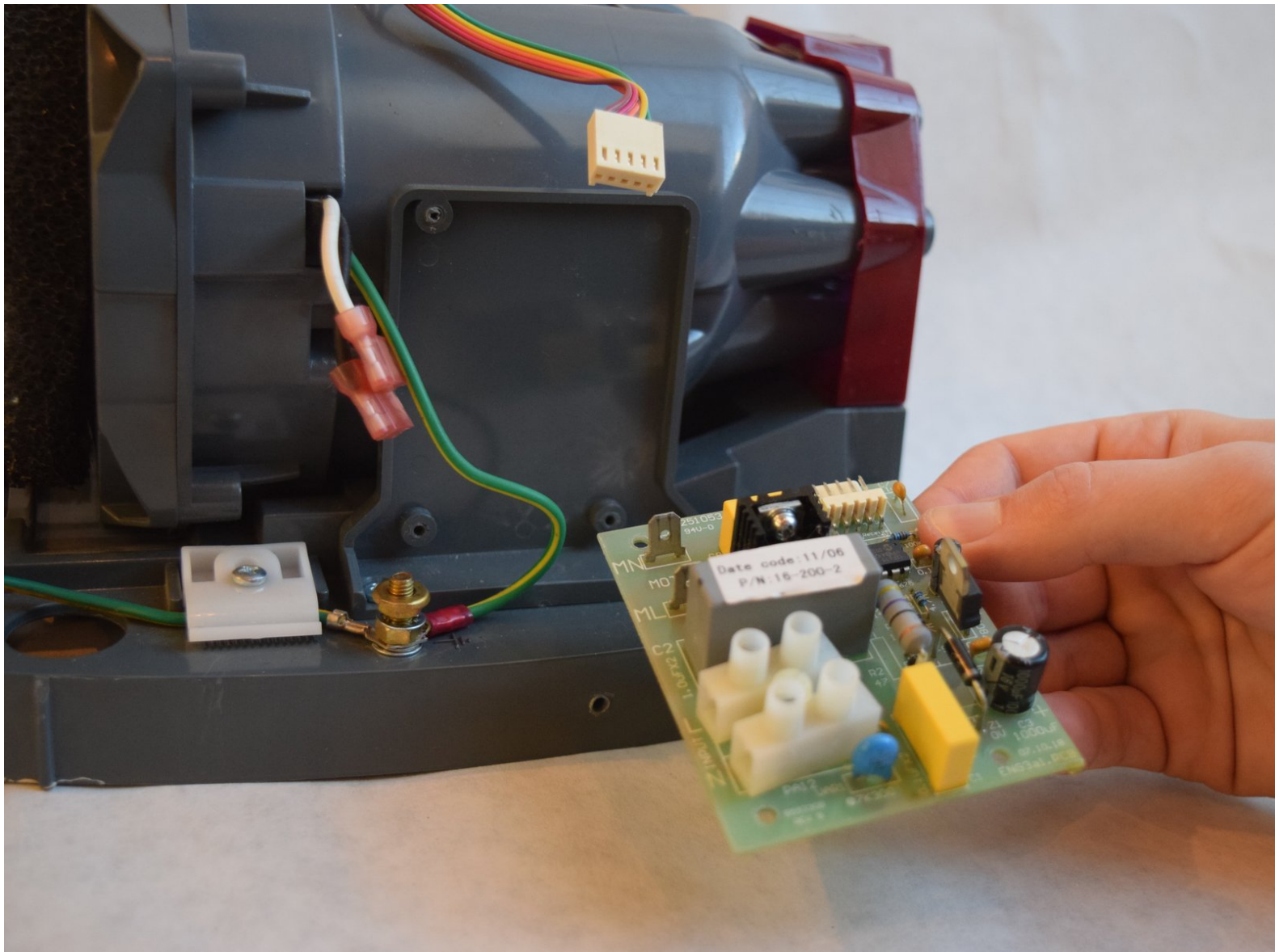




World Dryer Airforce J4-973A3 Server Board Replacement

How to replace a World Dryer Airforce J4-973A3 server board.

Written By: Blane Hirsh



INTRODUCTION

If the device does not start and the Sensor Lens is in good condition, then the Circuit Board may be faulty and need replacement.



TOOLS:

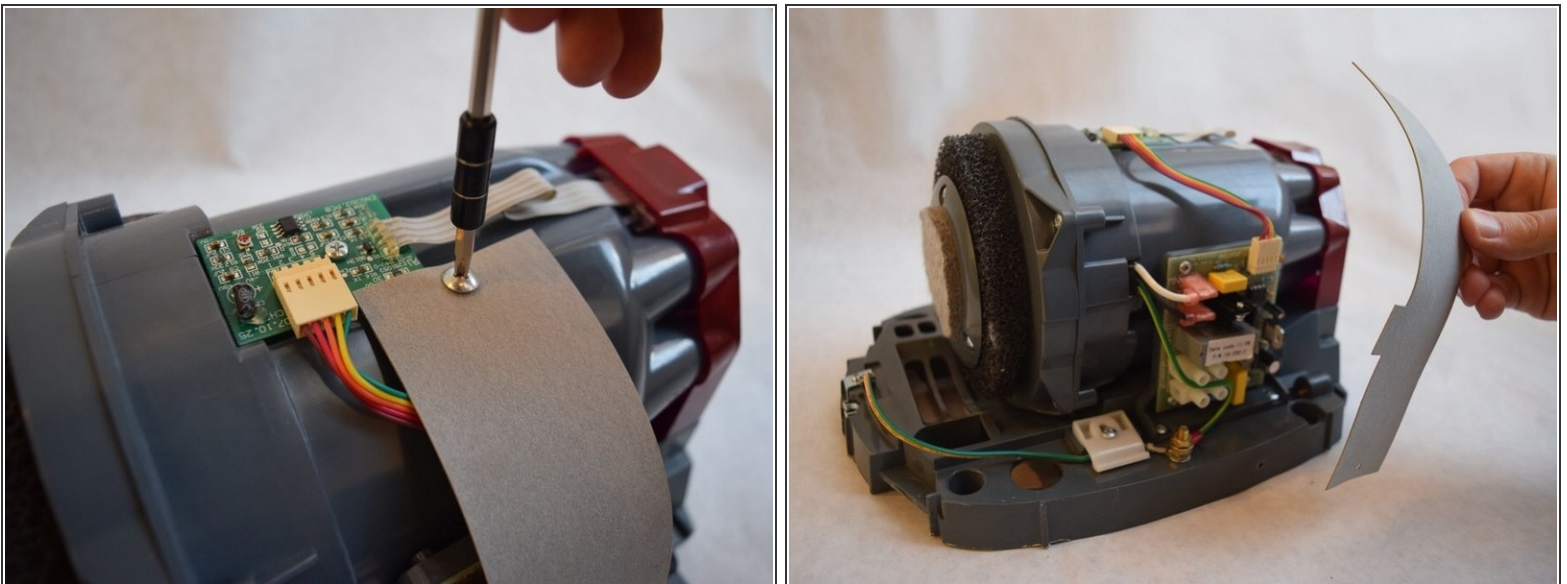
- [Tamper Resistant TORX Plus TR Bit](#) (1)
 - [Phillips #1 Screwdriver](#) (1)
 - [Phillips #2 Screwdriver](#) (1)
 - [iFixit Opening Tools](#) (1)
-

Step 1 — Server Board



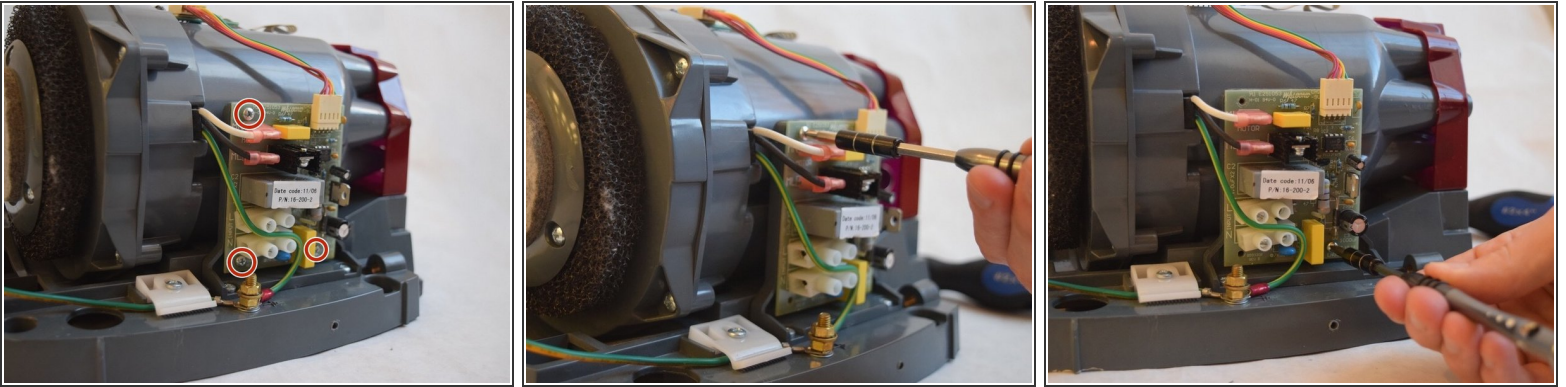
- Begin by removing both screws and the brushed metal casing. Simply lift up at the indicated area with your hand.
- ⓘ The INSTALL and REMOVE indicators may be incorrect, so exercise caution when removing the screws.

Step 2



- Remove both 3/8" Ph2 screws attached to the grey belt at the top and bottom.
- Lift the grey belt away. This gives access to the server board.

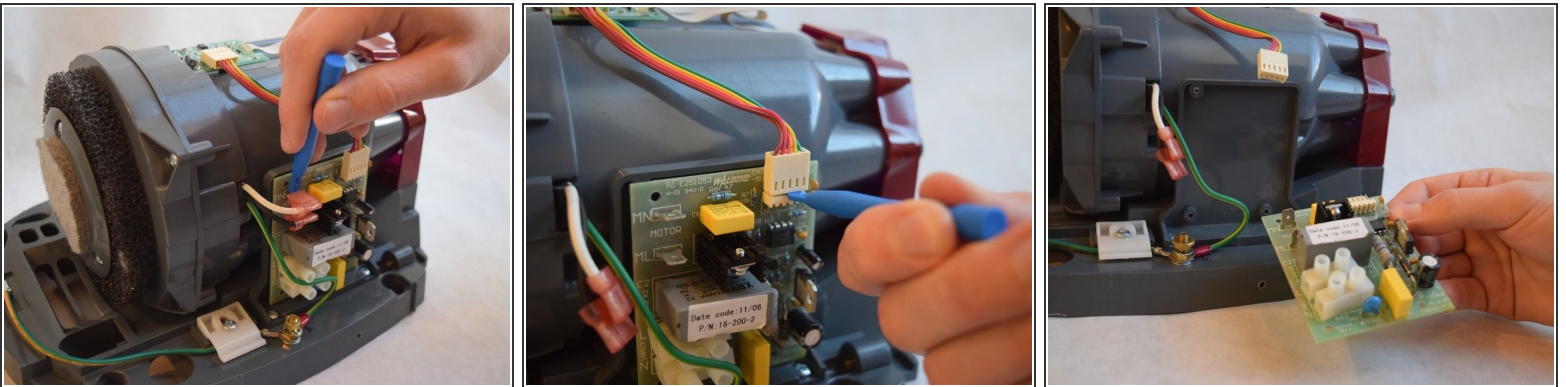
Step 3



- Remove all three 1/2" Ph1 screws connecting the server board to the device.

☞ During reassembly, install the screws before reattaching the wires.

Step 4



- Use a plastic opening tool to remove the two pink capped wires in the upper left corner of the server board.
- Use the same tool to dislodge the white capped ribbon bus with the multi-colored wires.
- After these steps, the server board should easily come off the side of the device.

To reassemble your device, follow these instructions in reverse order.