



# Atari Flashback 2 Difficulty Button Replacement

This guide covers the steps necessary to disassemble and replace the difficulty buttons on the Atari Flashback 2.

Written By: Aaron Ramadan



---

## INTRODUCTION

If the difficulty button on an Atari Flashback 2 console is sticking or broken, then it will need to be cleaned or replaced. This guide covers the steps necessary to disassemble the console in order to access the buttons for replacement.



### TOOLS:

- [Phillips #1 Screwdriver](#) (1)
-

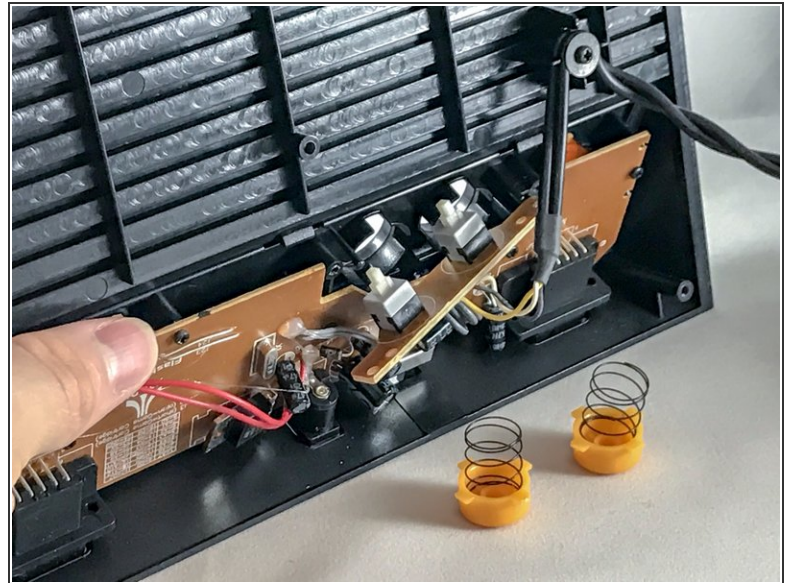
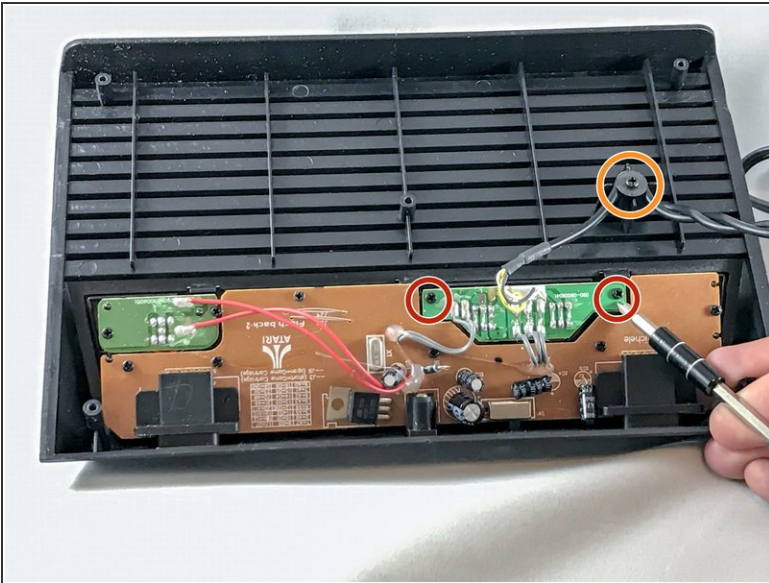
## Step 1 — Difficulty Button



- Using the screwdriver and the PH1 bit, unscrew the five 10.0 mm screws on the bottom of the console.

**i** One screw is under the main sticker in the middle of the console.

## Step 2



- Unscrew the two 10.0 mm Phillips #1 screws, and gently pull back the green circuit board.
- ⚠ Remove gently. The circuit board is connected by wire to the board. Removing the cable from the console case may allow more slack.
- i** The button springs may be under compression.

To reassemble your device, follow these instructions in reverse order.