



# Dell Latitude E5430 Hard Drive Replacement

This guide will demonstrate how to replace the...

Written By: Sam



# INTRODUCTION

This guide will demonstrate how to replace the hard drive on your Latitude E5430.



## TOOLS:

- [Phillips #1 Screwdriver](#) (1)



## PARTS:

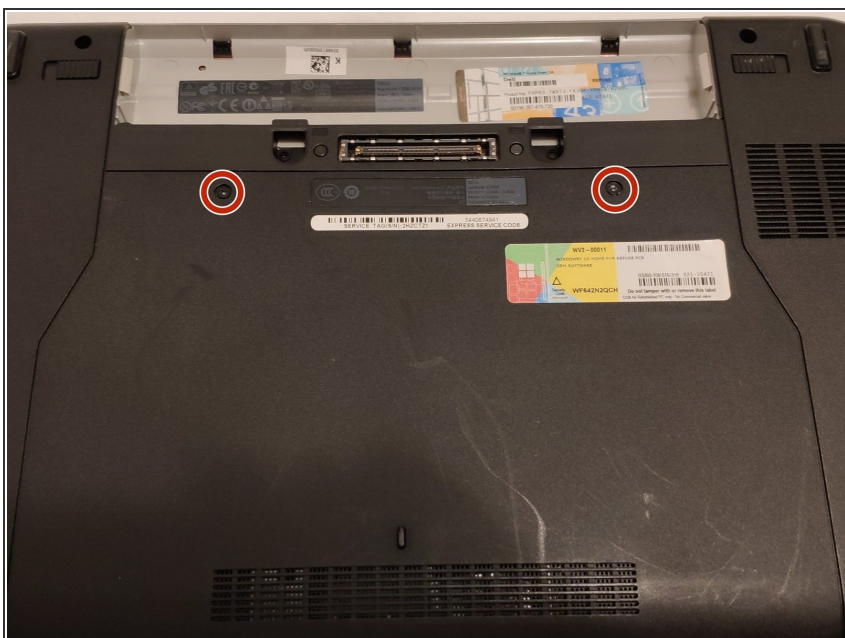
- [1 TB SSD](#) (1)
- [Crucial MX500 250 GB SSD](#) (1)
- [Crucial MX500 500 GB SSD](#) (1)
- [2 TB SSD](#) (1)

## Step 1 — Remove the Battery



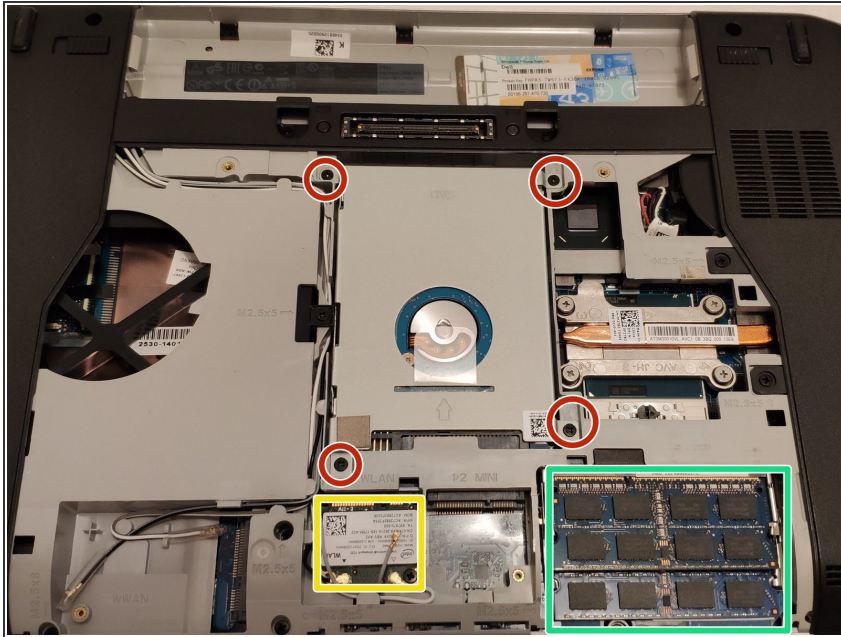
- Slide the two notches outward. Lift the battery outward and pull.

## Step 2 — Remove the Bottom Cover



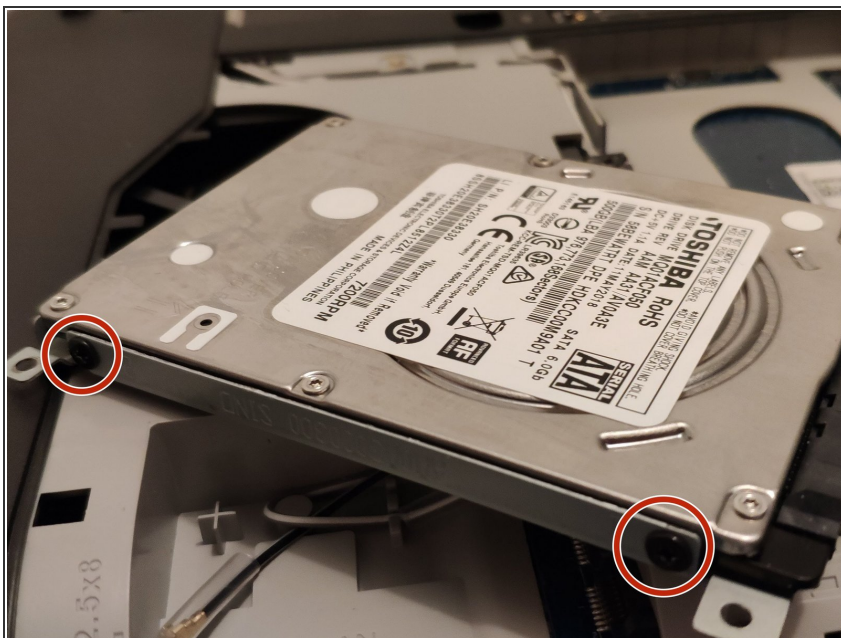
- Remove two Phillips head screws from the bottom cover.

### Step 3 — Remove the Hard Drive Caddy



- Remove the four Phillips head screws from the hard drive caddy.
- System memory (RAM) is located here.
- Low profile WLAN card
- ❗ Various components can be replaced from this stage.


### Step 4 — Unscrew the Hard Drive from the Caddy



- Remove the four Phillips head screws surrounding the hard drive in the caddy.
- ❗ There are two more screws on the other side of the hard drive.

## Step 5 — Done!



 Congratulations, you've done it!

After you have installed your new hard drive or SSD, repeat the process in reverse.