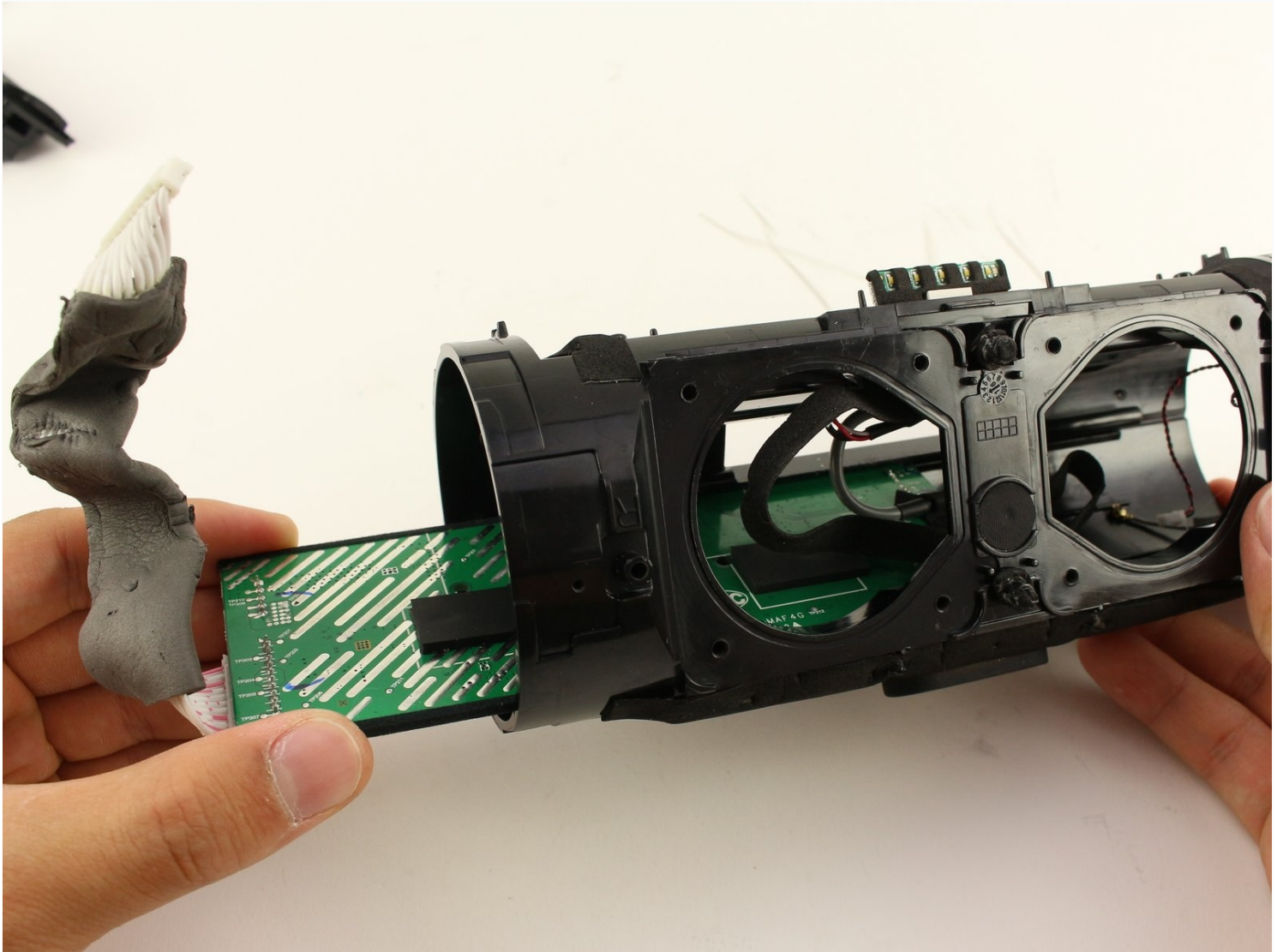




JBL Charge 3 Motherboard Replacement

The motherboard is the last piece of your...

Written By: Sunmin Yoon



INTRODUCTION

The motherboard is the last piece of your speaker you should try replacing if it is not operating properly as it is the most difficult to access.

TOOLS:

[Tweezers](#) (1)

[iFixit Opening Tool](#) (2)

[Phillips #1 Screwdriver](#) (1)

Step 1 — Front Cover



- Turn your speaker upside down and insert the plastic opening tool vertically into the slit in the front cover.
- Slowly pull the plastic opening tool outward to remove the four clips holding the covering in place.
- Repeat this process for all four edges of the front cover.

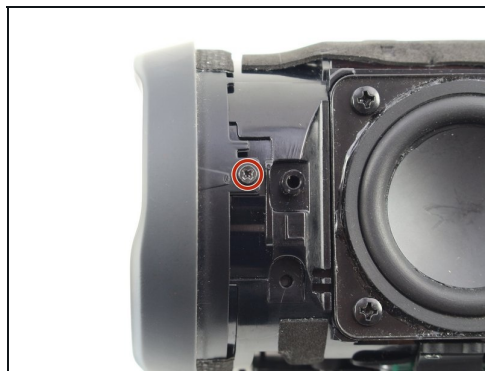
Step 2



- Pull apart your cover gently from both sides and remove it from the speaker housing.
- ☑ The inside of the front cover has holes that must match with their corresponding pins on the speaker housing for proper reassembly.

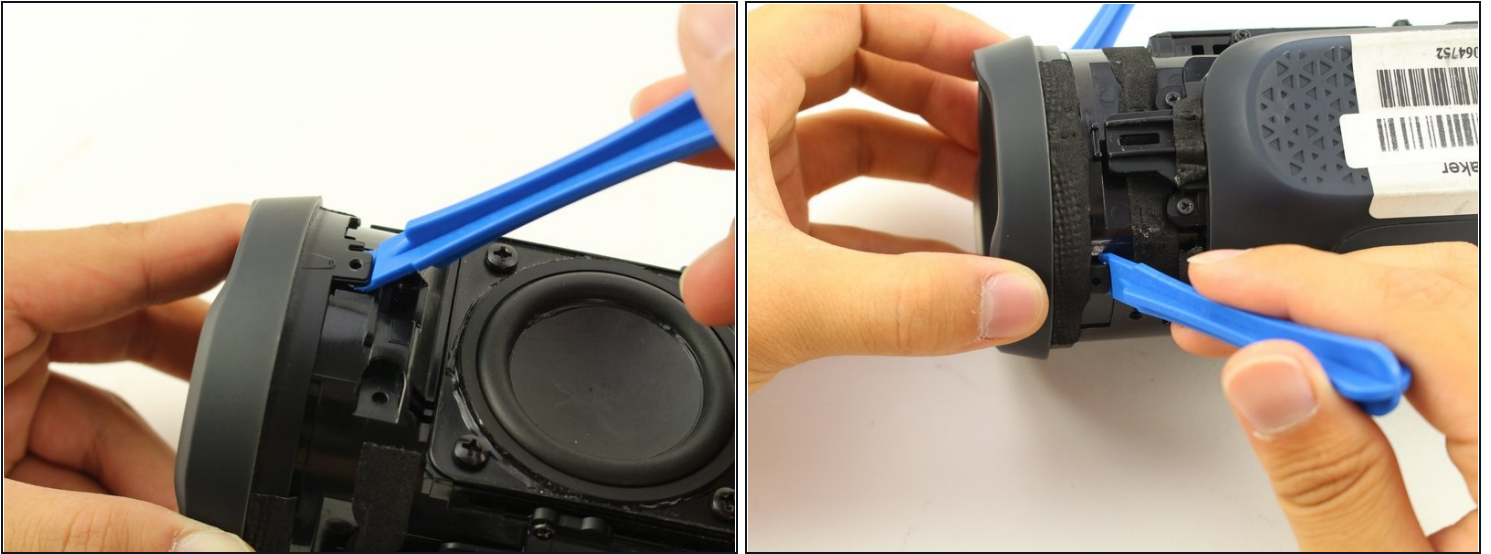
⚠ Removing the Front Cover does not affect the waterproof seals of the device. However, removing any further disassembly of your speaker will require removing waterproof seals and gaskets. Your device may no longer be waterproof after these have been altered.

Step 3 — Passive Radiators



- Remove the two 8mm Phillips #1 screws from the tabs.
- NOTE: There may be only one screw.

Step 4



- Insert the plastic opening tools underneath both tabs.

Step 5



- Twist and pull open the passive radiator. The left radiator twists off clockwise; the right counterclockwise.

Step 6



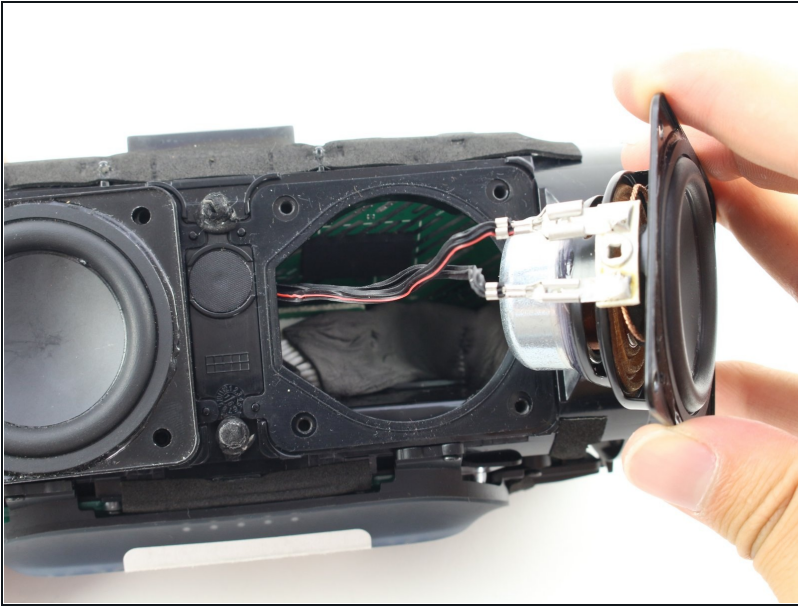
- Repeat all previous steps for the other passive radiator.
- NOTE: only the right radiator needs to be removed for changing the battery.

Step 7 — Speaker



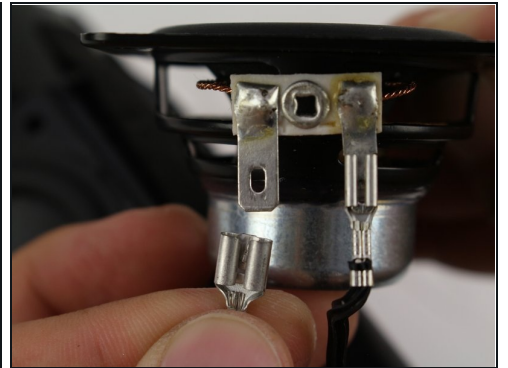
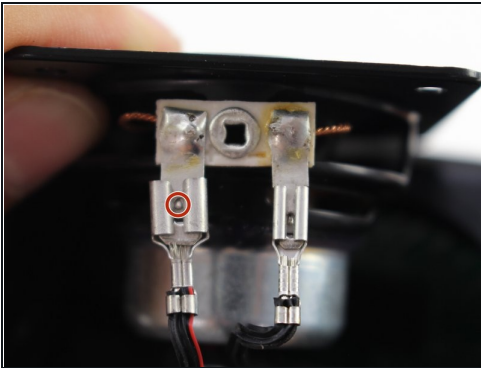
- Remove the eight 10mm Phillips #1 screws from around the two front speakers.

Step 8



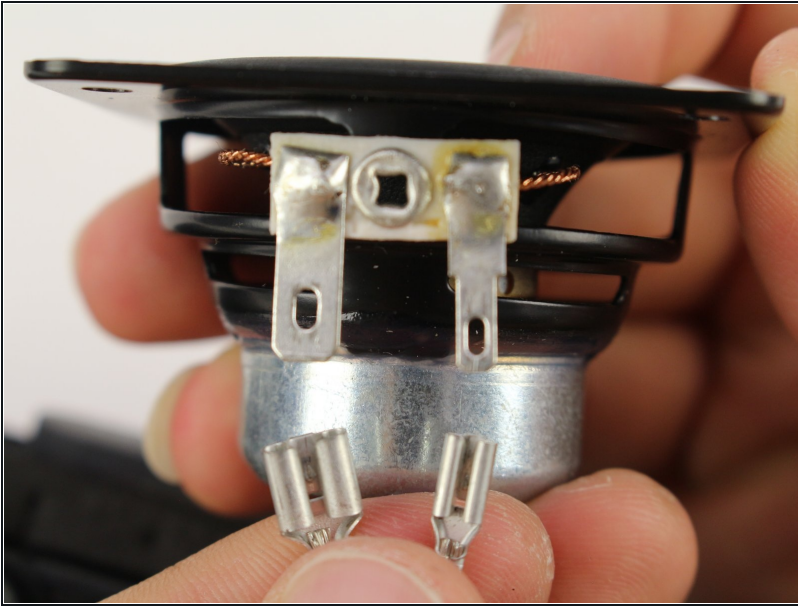
- Pull gently on one of the speakers so it is outside of the housing. Be careful as it is still attached with the wires to the motherboard.

Step 9



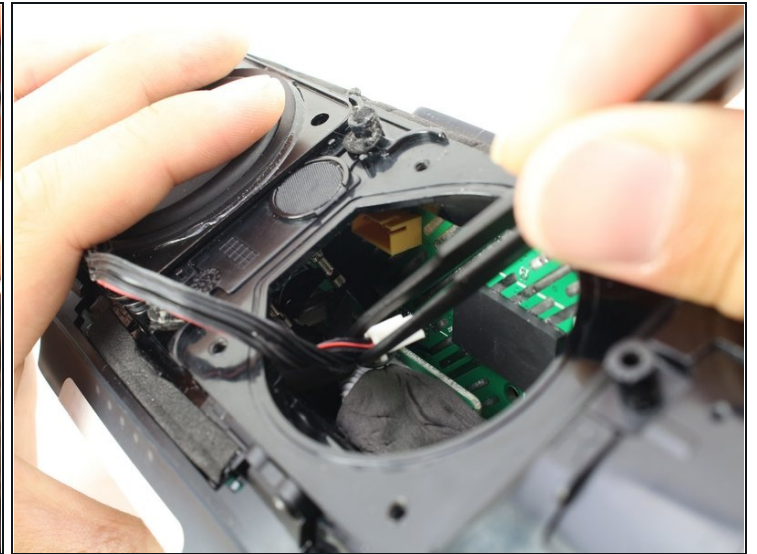
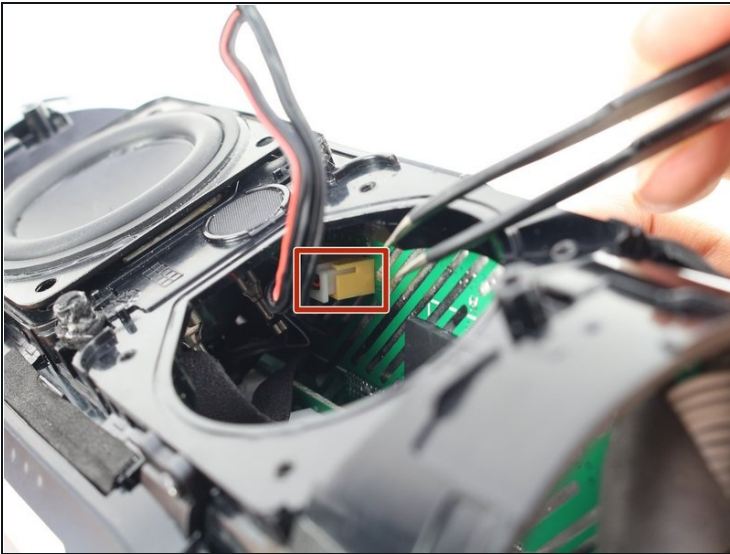
- Press the small metal tab on the speaker connector with a Phillips #000 screwdriver and gently pull the connector apart.

Step 10



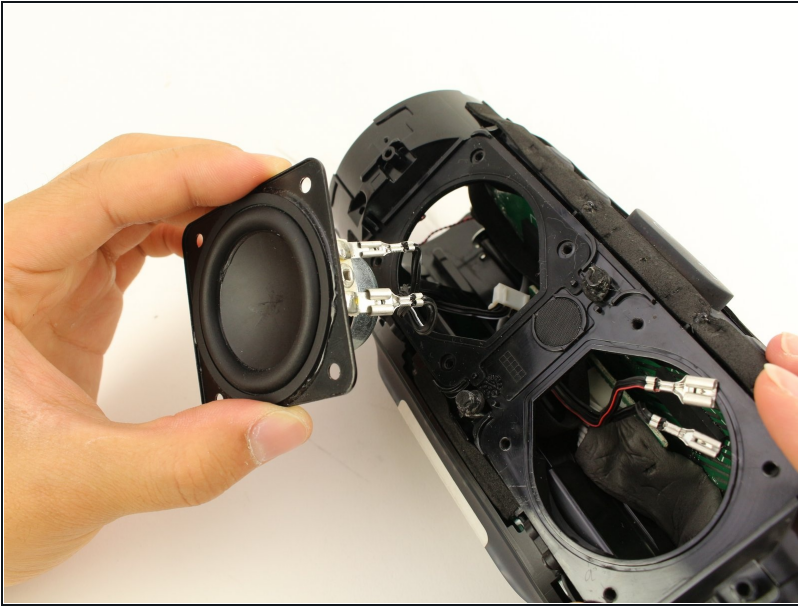
- Repeat the previous step for the second connector.

Step 11



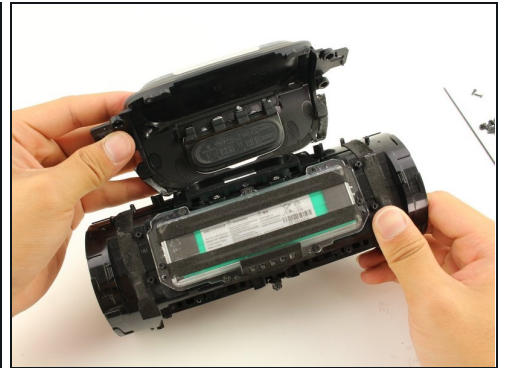
- Grab the bundled cable connector that joins the speakers to the motherboard with [tweezers](#). Gently pull the connector free.

Step 12



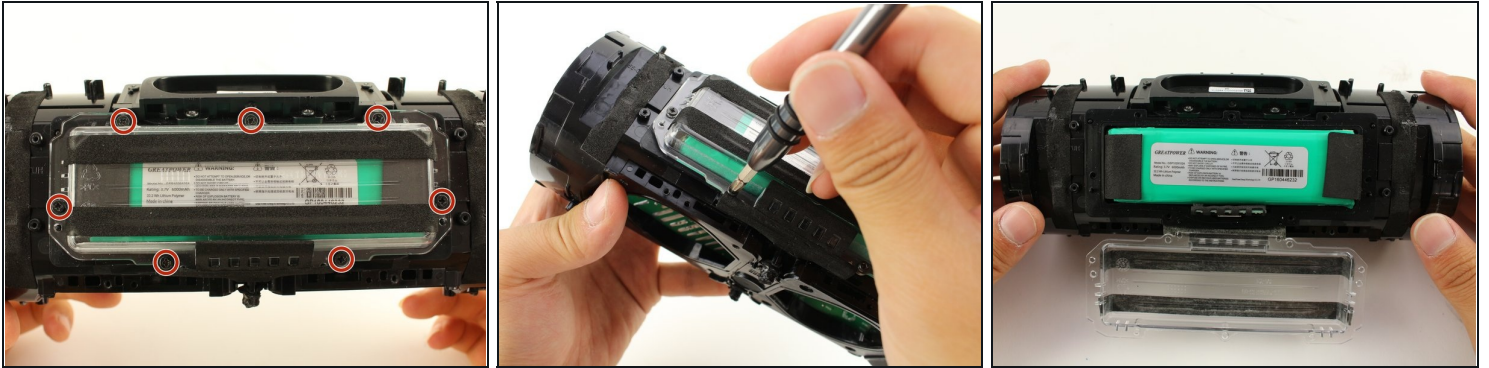
- Now that the second speaker is disconnected from the motherboard, pull the speaker and wires out of the housing.

Step 13 — Battery



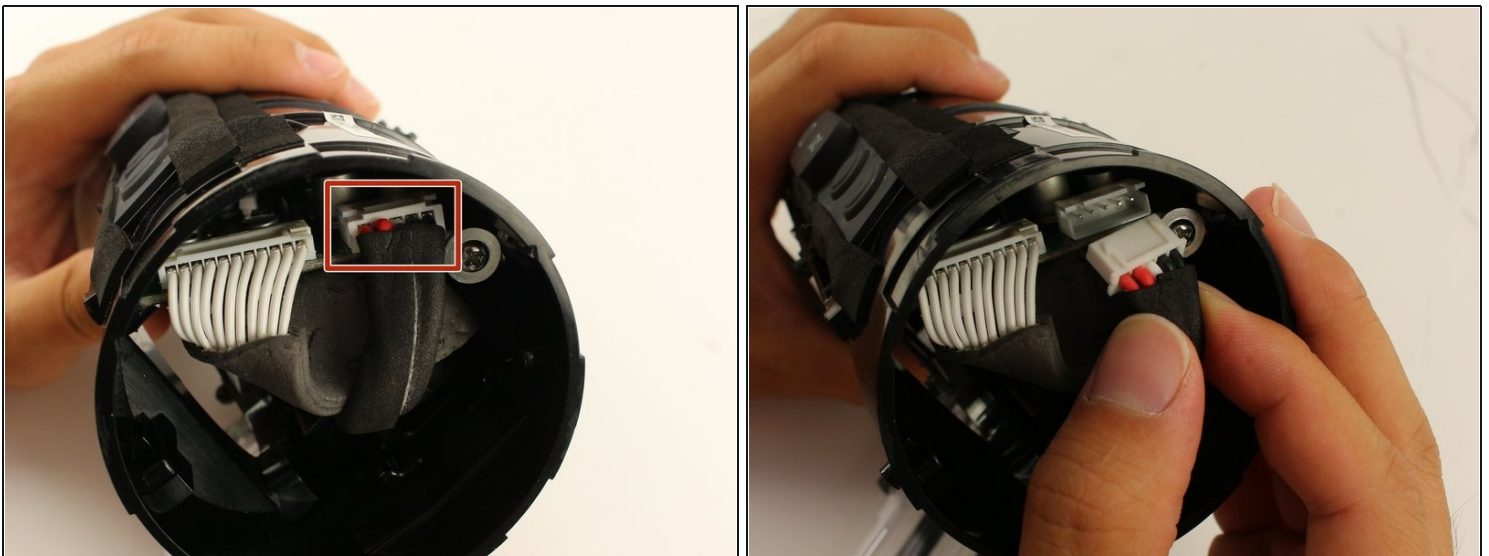
- Remove the six 8mm Phillips #1 screws from the outer battery cover.
- Peel the outer battery cover away from the speaker housing.

Step 14



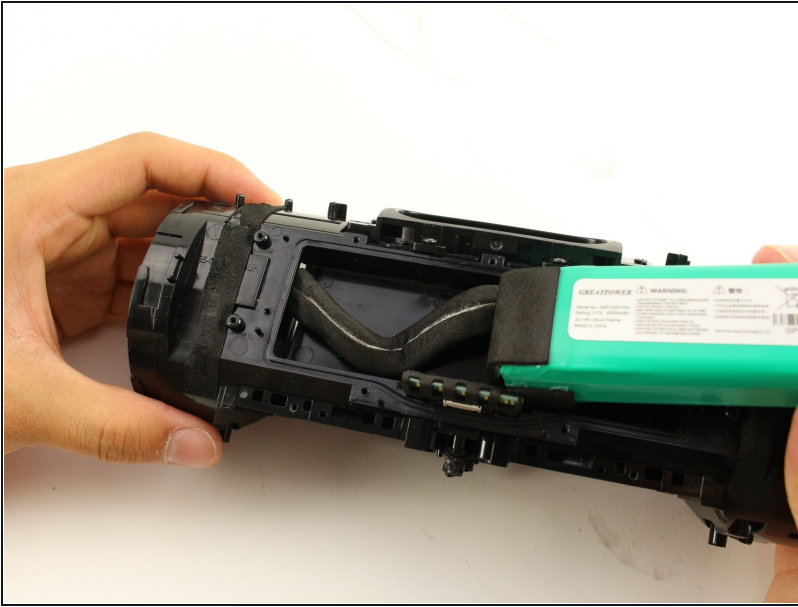
- Remove the seven 8mm Phillips #1 screws from interior battery cover.
- Remove the interior battery cover.

Step 15



- Pull gently to disconnect the bundled cable connector in the side of the speaker. This action will separate the battery from the motherboard.

Step 16



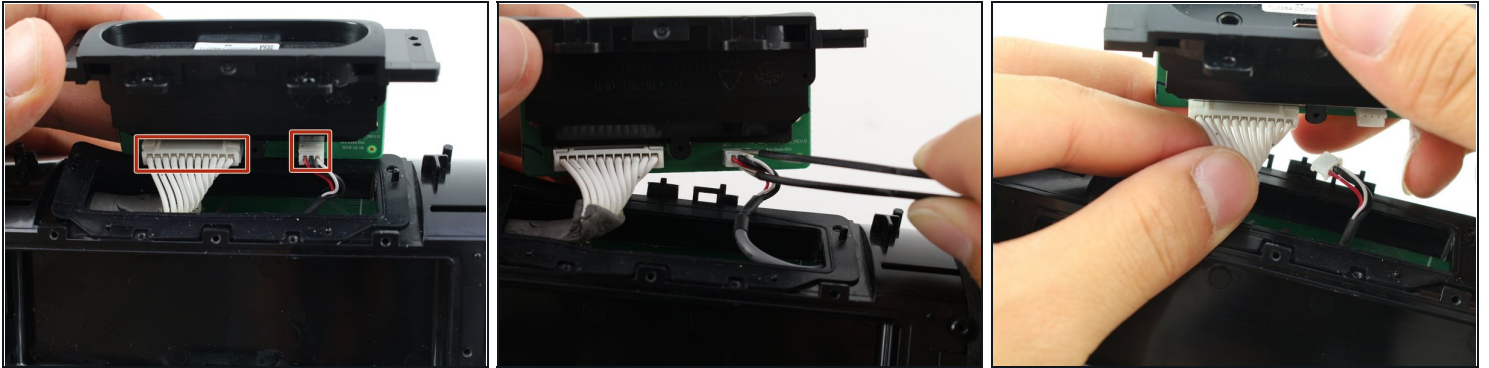
- Pull the battery and battery cable out from their housing.

Step 17 — Port Bay



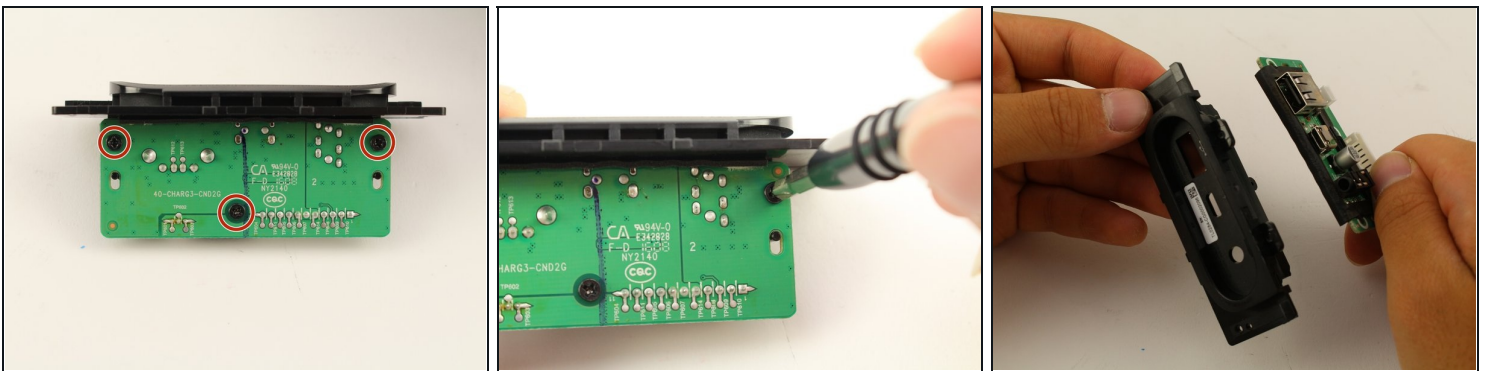
- Take out the four 8mm Phillips #1 screws out of the port bay cover.
- Wedge your plastic opening tool around the port bay to remove it.

Step 18



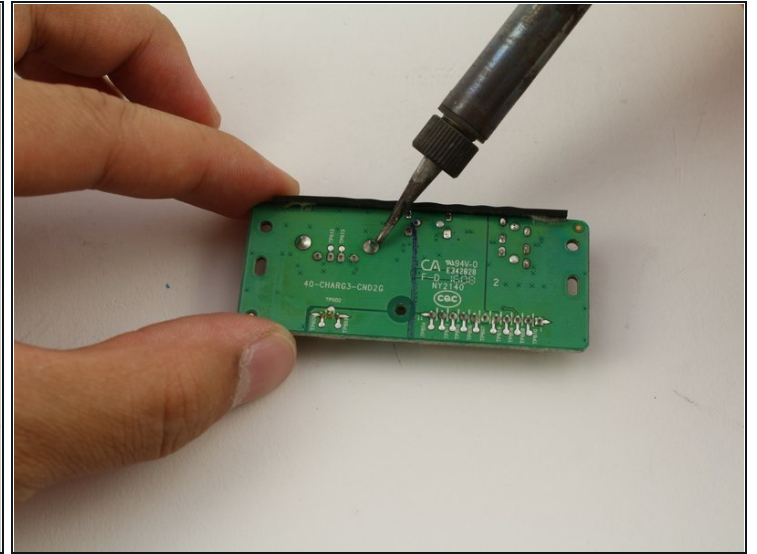
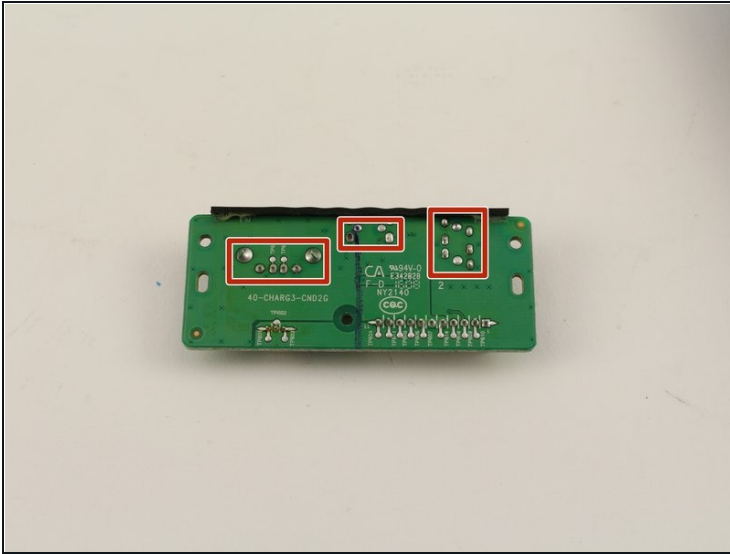
- Disconnect the two bundled cable connector from the port bay.

Step 19



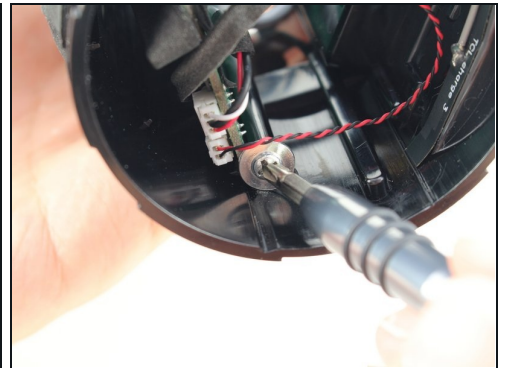
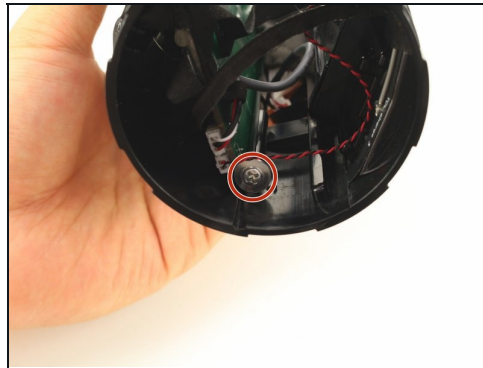
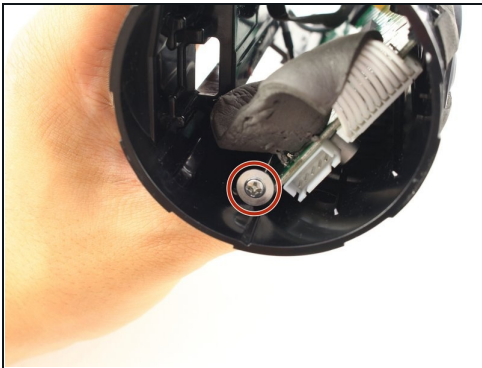
- Remove the three 8mm Phillips #1 screws from the port bay circuit board.
- Pull the port bay cover off of the circuit board.

Step 20



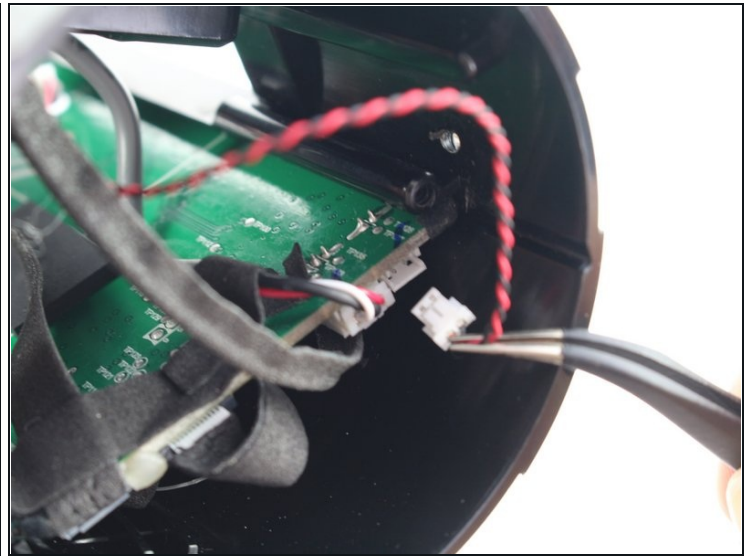
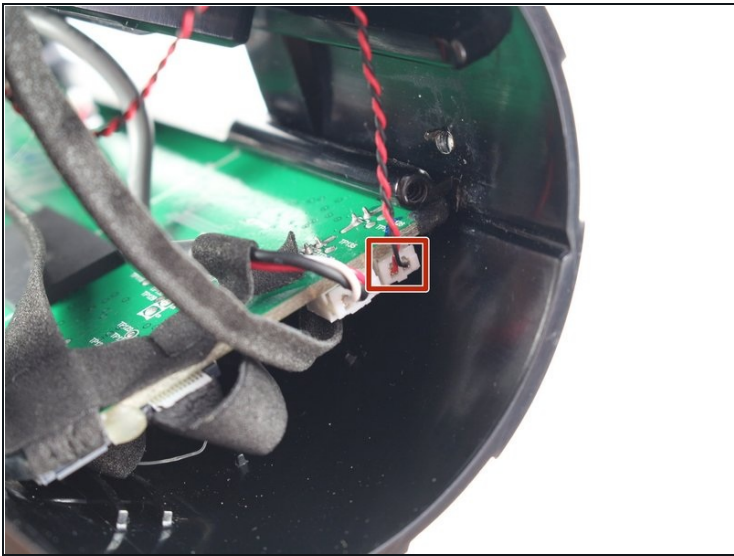
- Desolder the USB, MicroUSB, or AUX port off of the circuit board.

Step 21 — Motherboard



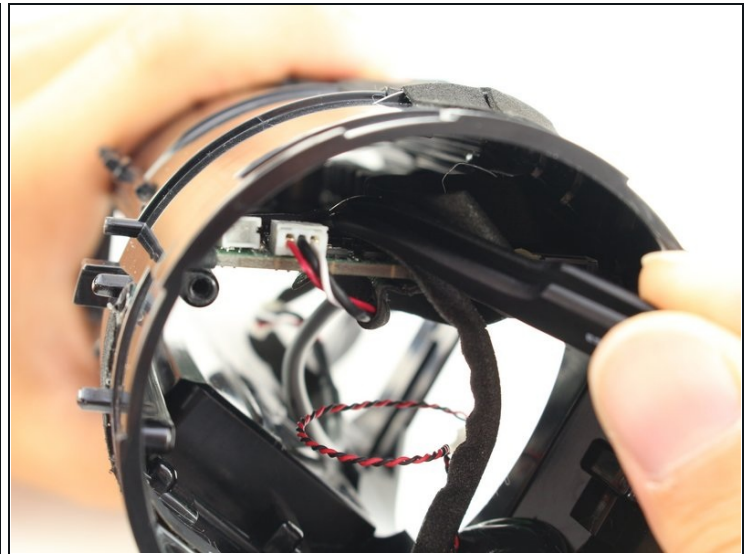
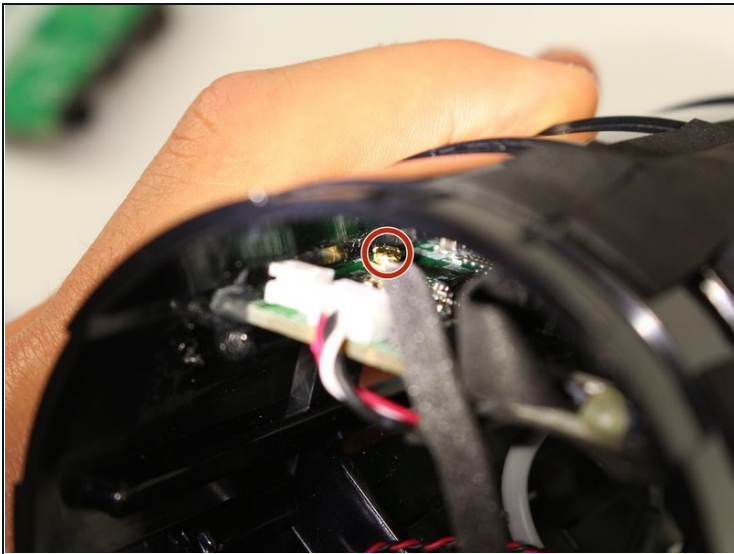
- Remove the two 9mm Phillips #1 screws holding in the sides of the motherboard.

Step 22



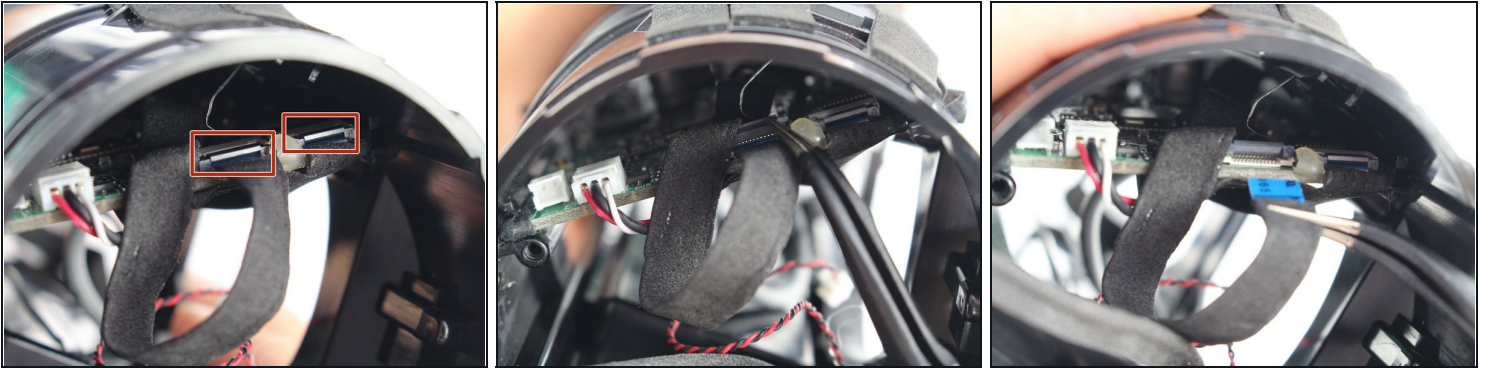
- Gently pull the bundled cable connector on the motherboard.

Step 23



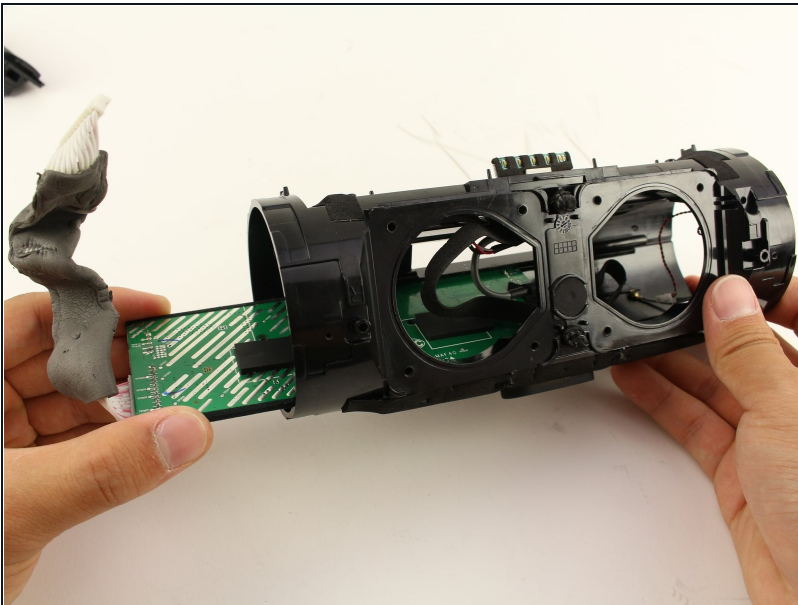
- Gently pull the golden connector off of the motherboard.

Step 24



- Flip open the top flap on the two ZIF connectors.
- Gently pull out the ZIF connector cables with [tweezers](#).

Step 25



- Slide the motherboard out of the housing.

To reassemble your device, follow these instructions in reverse order.