



Motorola i450 Boost Mobile Circuit Board Replacement

This guide provides instructions on how to disassemble the device to access the circuit board of the device.

Written By: Amber King



INTRODUCTION

The circuit board controls whether any other function of the phone works at all. The circuit board cannot be replaced without replacing the entire unit, but removing it provides access to other replaceable parts.



TOOLS:

- [Anti-Static Project Tray](#) (1)
 - [T5 Torx Screwdriver](#) (1)
 - [T6 Torx Screwdriver](#) (1)
-

Step 1 — Back Cover



- Place the phone on a flat surface with the front facing down.
- Insert your finger under the gray plastic cover at the bottom end of the phone.
- Lift the cover off the phone.

Step 2 — Battery



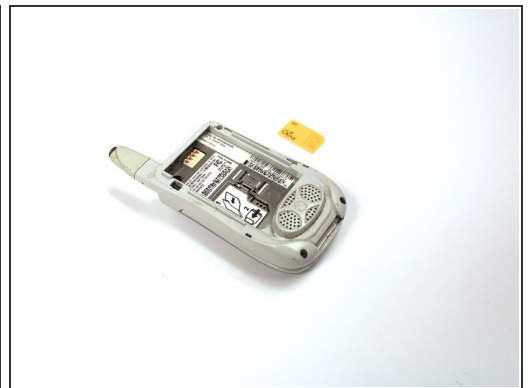
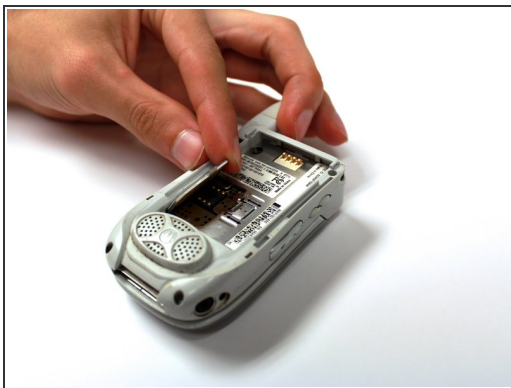
- Place your thumb in the notch in the lower left corner of the battery compartment.
- Lift the battery up and away from the phone.
- Remove the battery.

Step 3 — SIM Card



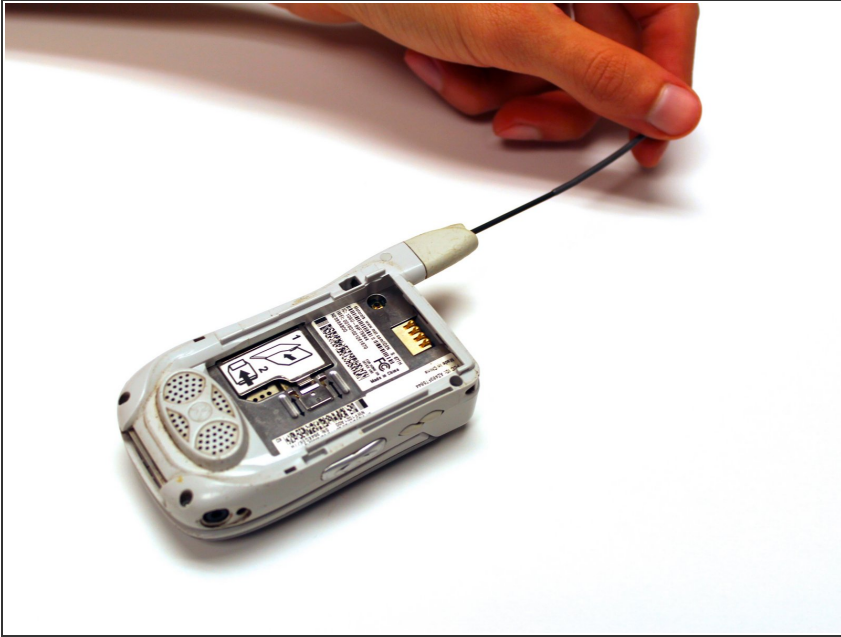
- Locate the metal slider that holds the SIM card in place.
- Push the slider away from the metal flap which contains the SIM card. The flap will pop up.

Step 4



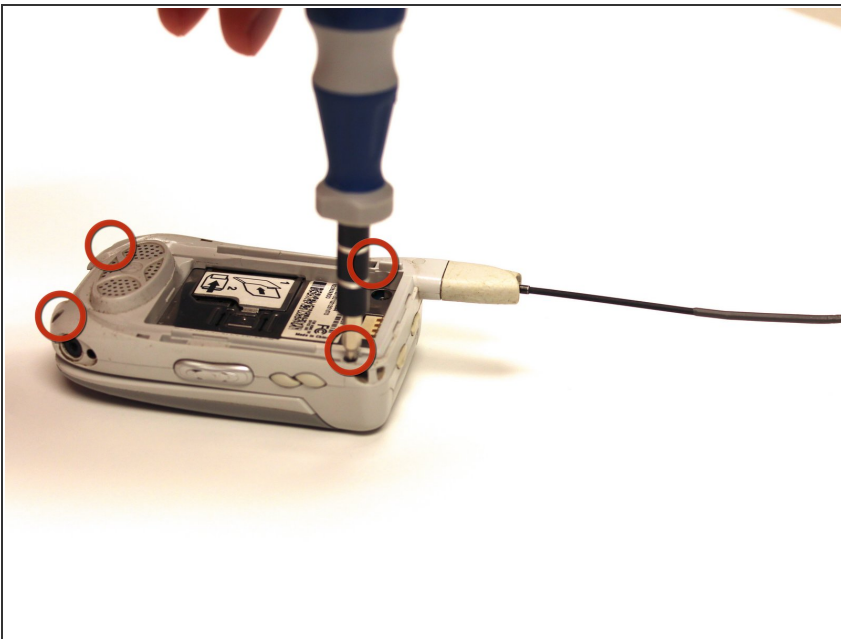
- Lift the metal flap to gain access to the bottom of the SIM card.
- Remove the SIM card by sliding it out parallel to the bottom of the flap.

Step 5 — Circuit Board



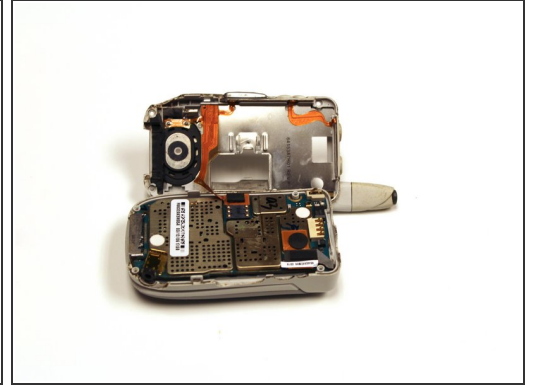
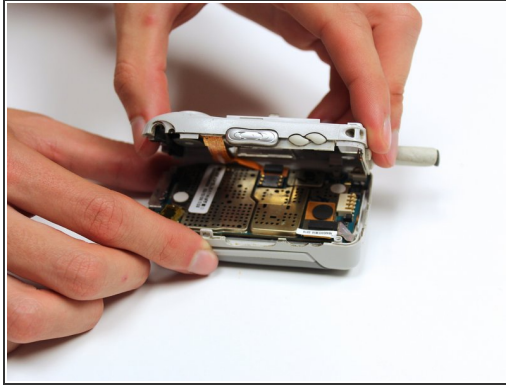
- Extend the antenna.

Step 6




- Remove the four 4.8 mm Torx T6 screws from the corners of the back of the phone.
- ⓘ If the antenna is not fully extended, the top left screw will not be accessible.

Step 7



- Gently lift off the back half of the phone and set to the side.

 Permanent circuit connections prevent the cover from completely separating from the phone. Do not attempt to disconnect these circuits.

To reassemble your device, follow these instructions in reverse order.