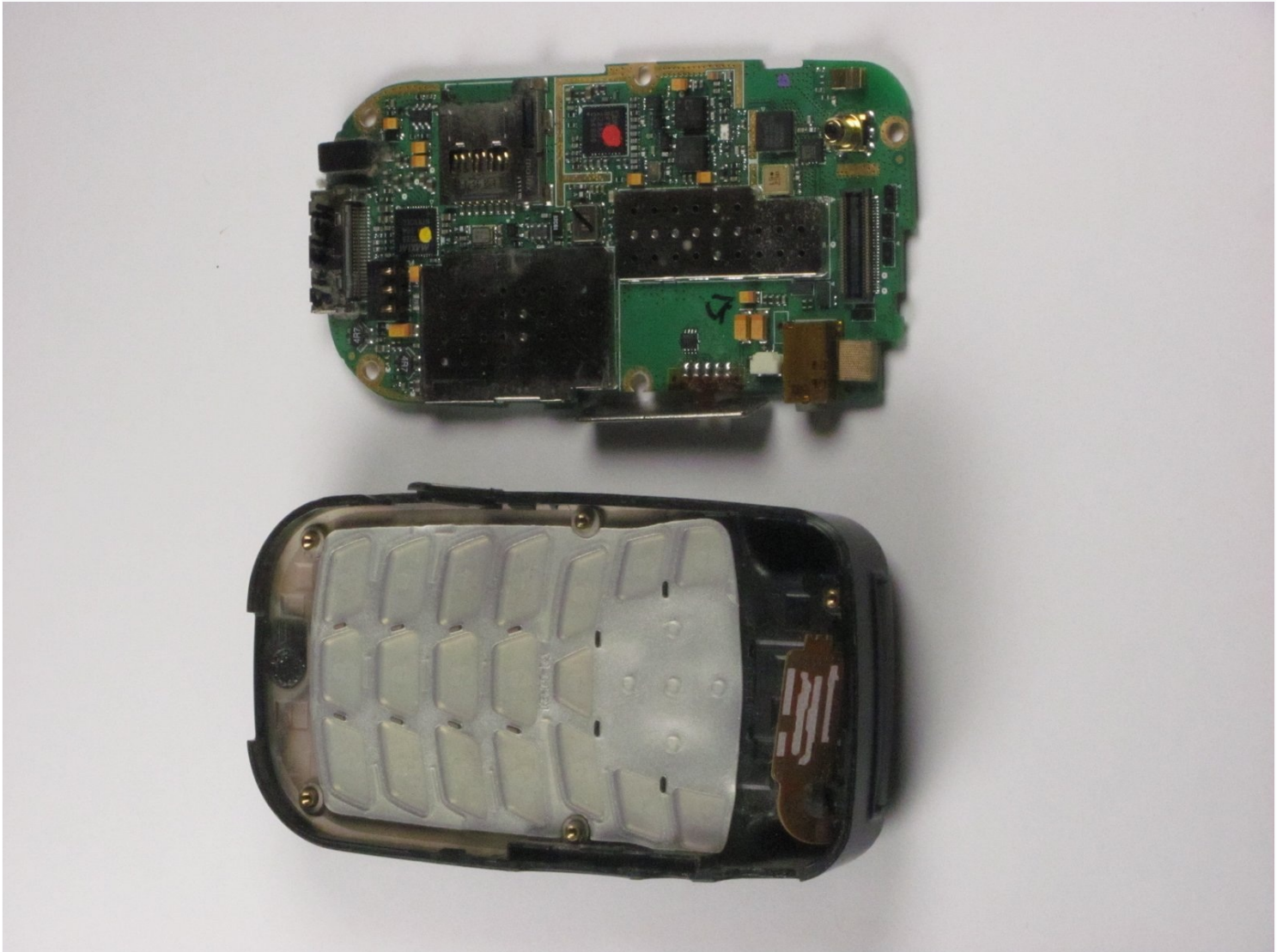




# UTStarcom CDM8945vw Logic Board Replacement

Follow this guide to properly replace the logic...

Written By: Bilal



# INTRODUCTION

Follow this guide to properly replace the logic board.

---

## TOOLS:

[Phillips #00 Screwdriver](#) (1)

[iFixit Opening Tool](#) (1)

[Tweezers](#) (1)

---

## Step 1 — Battery



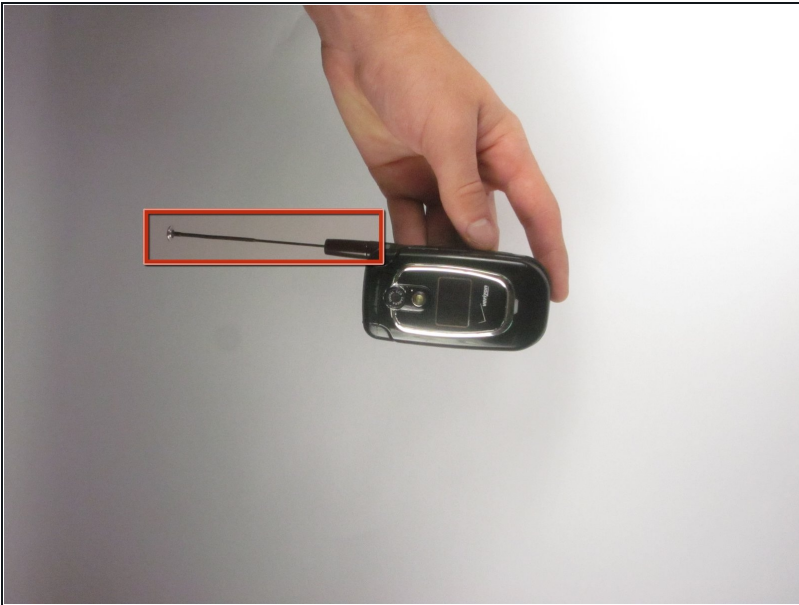
- Push the highlighted button in the direction in which the antenna is pointing. The battery will release and pop up.

## Step 2



- Remove the battery.

## Step 3 — Antenna



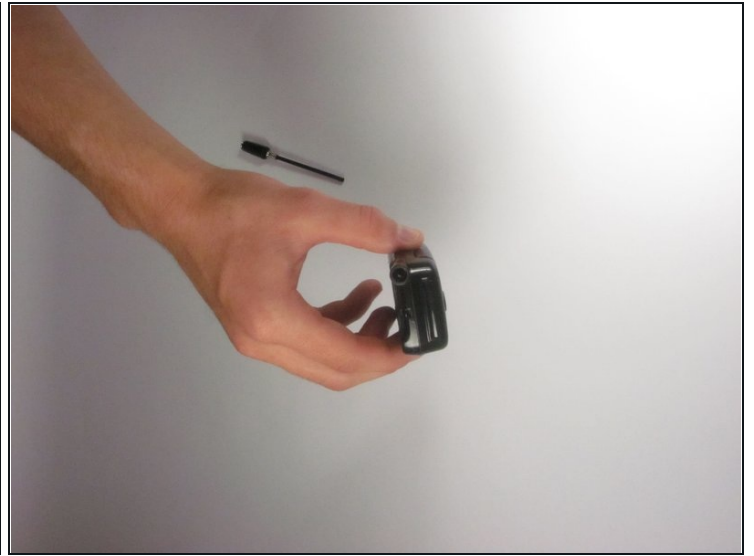
- Identify the antenna. It is the extendable plastic component pictured here.

## Step 4



- Twist the base in a counter-clockwise motion to unscrew the antenna.

## Step 5



- The antenna should slide right out of the phone when finished.



## Step 6 — Speaker



- Remove the small rubber grommet using the plastic opening tool.

## Step 7



- Remove five screws using a Phillips #00 screwdriver.

## Step 8



- Use the plastic opening tool to separate the two pieces that form the outer case of the phone.

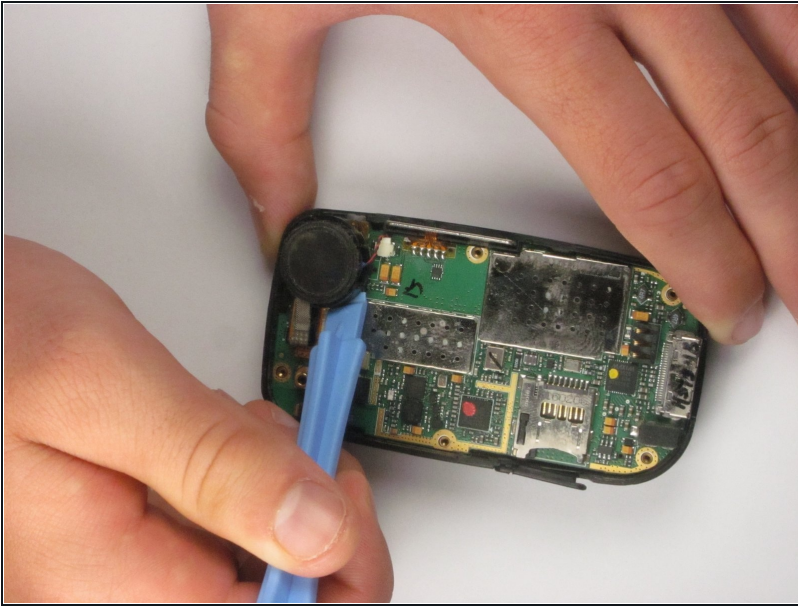
⚠ Prying the two pieces apart may be difficult. Carefully apply a moderate amount of pressure when attempting to separate the two pieces or else you will risk breaking them.

## Step 9



- Remove the back piece of the outer case.

## Step 10



- Remove the speaker using a plastic opening tool.

⚠ Apply a small amount of force when removing the broken speaker from the motherboard. If you apply a large amount of force, you may rip out the wires and damage the motherboard.

## Step 11

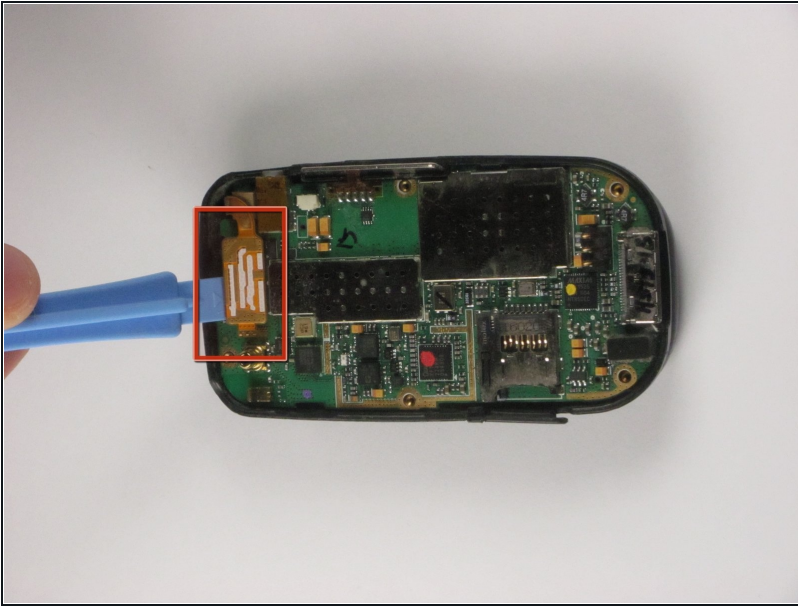


- Remove the wire attached to the speaker from the motherboard using [tweezers](#).

⚠ Apply a small amount of force when removing the wire from the motherboard. If you apply a large amount of force, you may rip out the wires and damage the motherboard.

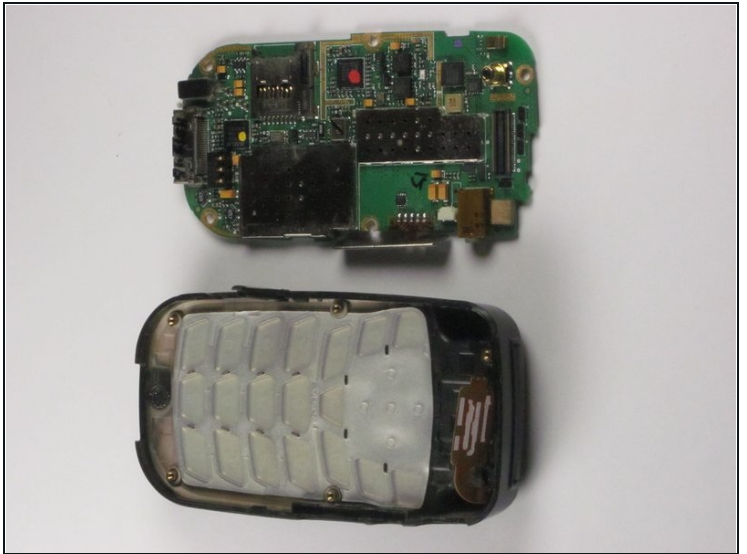
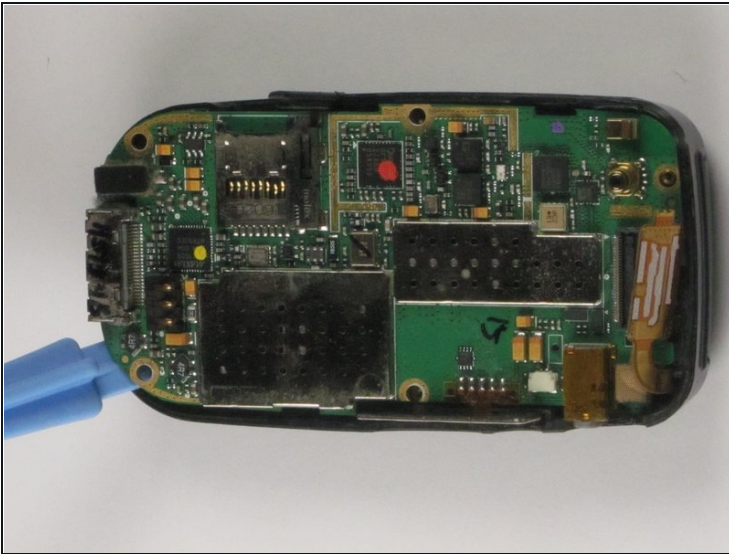


## Step 12 — Logic Board



- Detach the highlighted piece from the logic board using a plastic opening tool.

## Step 13



- Remove the logic board from the anterior piece of the outer case using the plastic opening tool.

To reassemble your device, follow these instructions in reverse order.