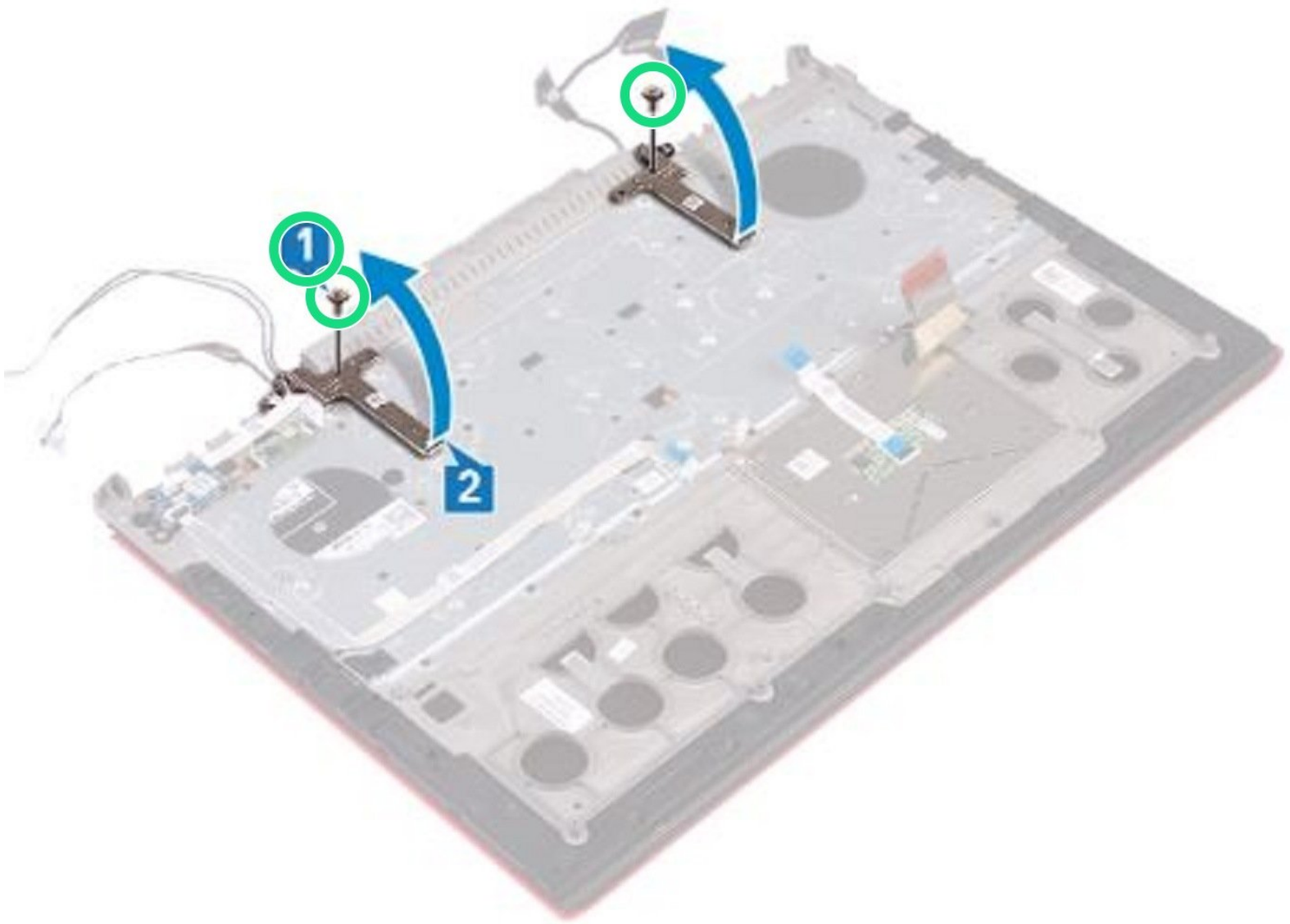




Dell Inspiron 15 Gaming 7577 Display Assembly Replacement

Written By: Terrence15



INTRODUCTION

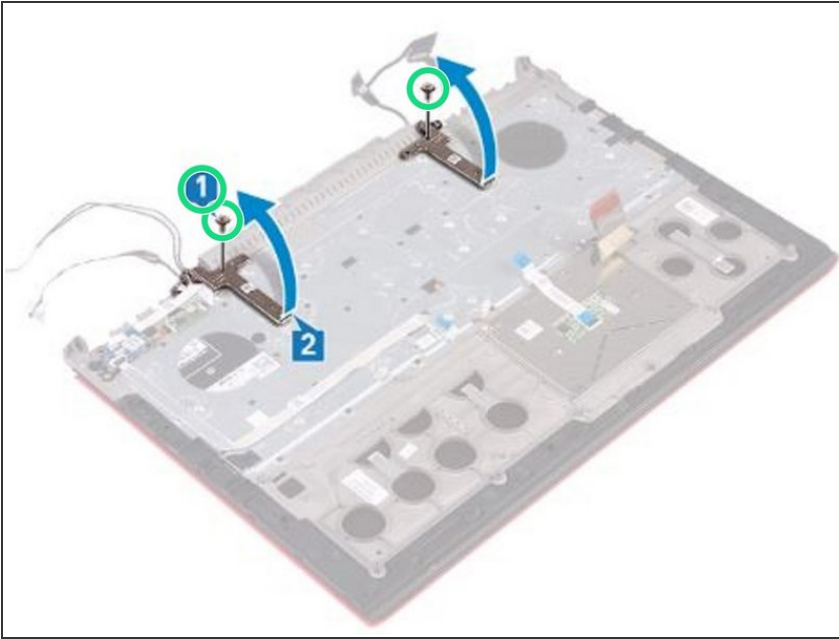
In this guide, we will be showing you how to remove and replace the Display Assembly.



TOOLS:

- [Phillips #0 Screwdriver](#) (1)
-

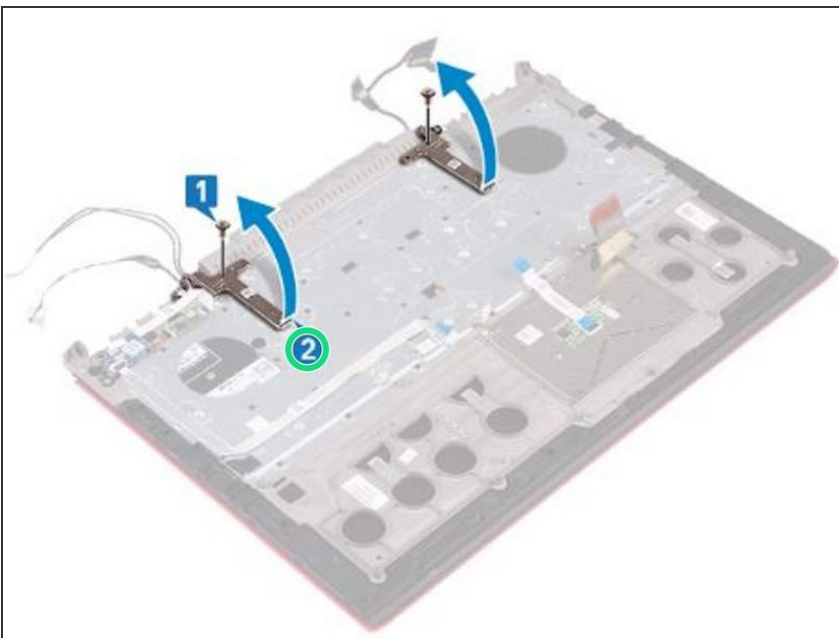
Step 1 — Remove the Screws



⚠ WARNING: Before working inside your computer, read the safety information that shipped with your computer and follow the steps in [Before Working Inside Your Computer](#). After working inside your computer, follow the instructions in [After Working Inside Your Computer](#).

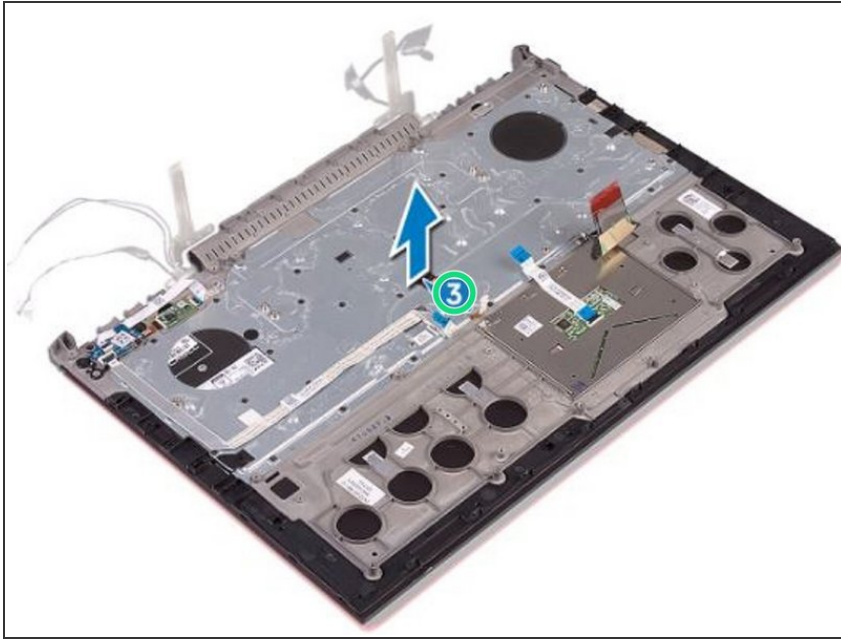
- Remove the two screws (M2.5x5) that secure the display hinges to the palm-rest assembly.

Step 2 — Open the Display Hinges



- Open the display hinges at an angle of 90 degrees.

Step 3 — Lifting the Palm-Rest Assembly



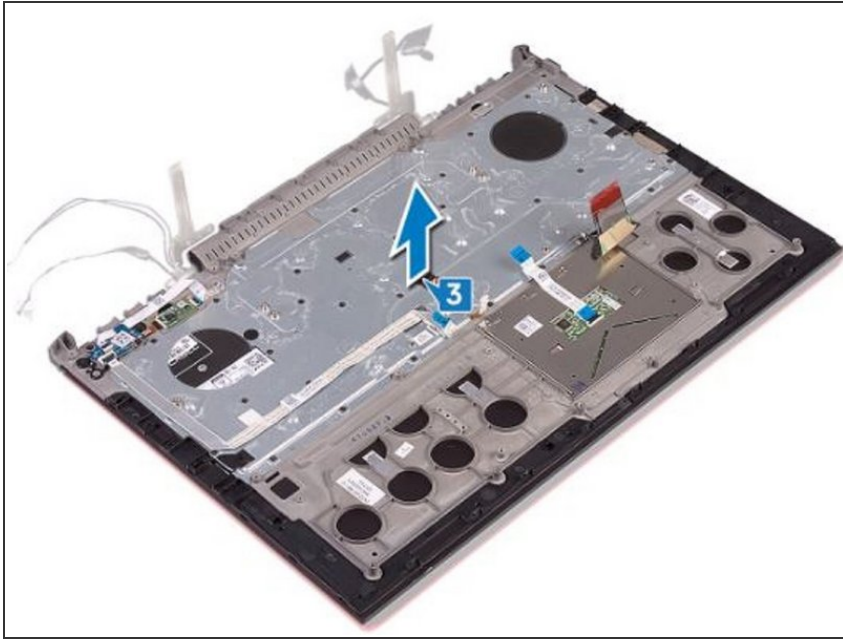
- Lift the palm-rest assembly off the display assembly.

Step 4 — Display Assembly



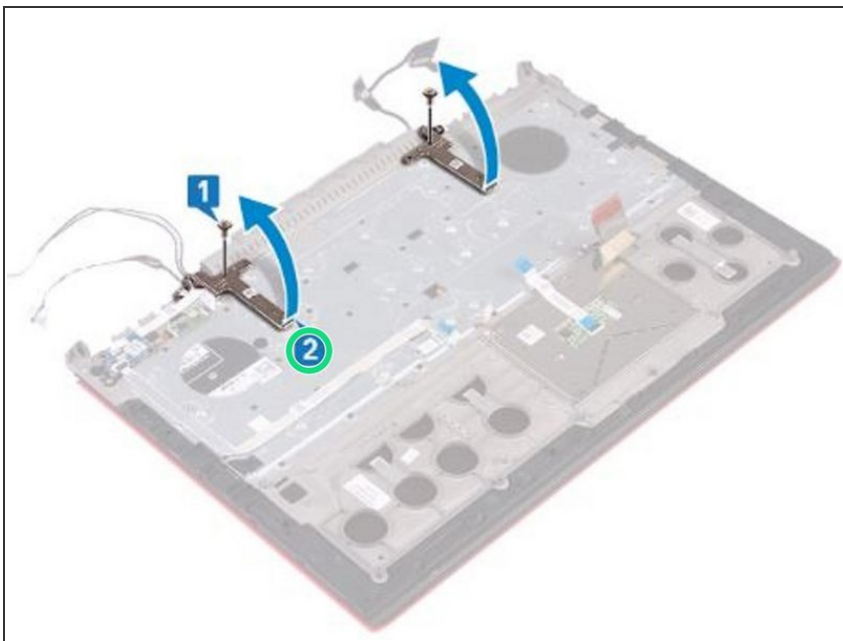
- After performing the above steps, you will be left with the display assembly.

Step 5 — Placing the Palm Rest



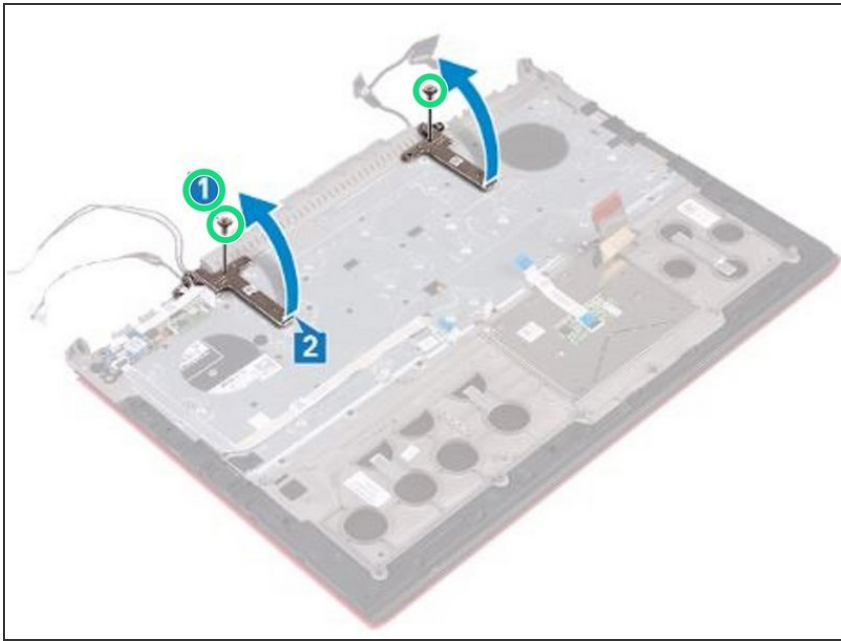
- Place the palm-rest assembly on the display assembly.

Step 6 — Close the Display Hinges



- Close the display hinges at an angle of 90 degrees.

Step 7 — Replace the Screws



- Replace the two screws (M2.5x5) that secure the display hinges to the palm-rest assembly.